

ACUSON AcuNav Volume ICE Catheter

**When lives are at stake,
you take command**

Now you can see more of what you want, when you want.
The next generation of visualization puts you in command.

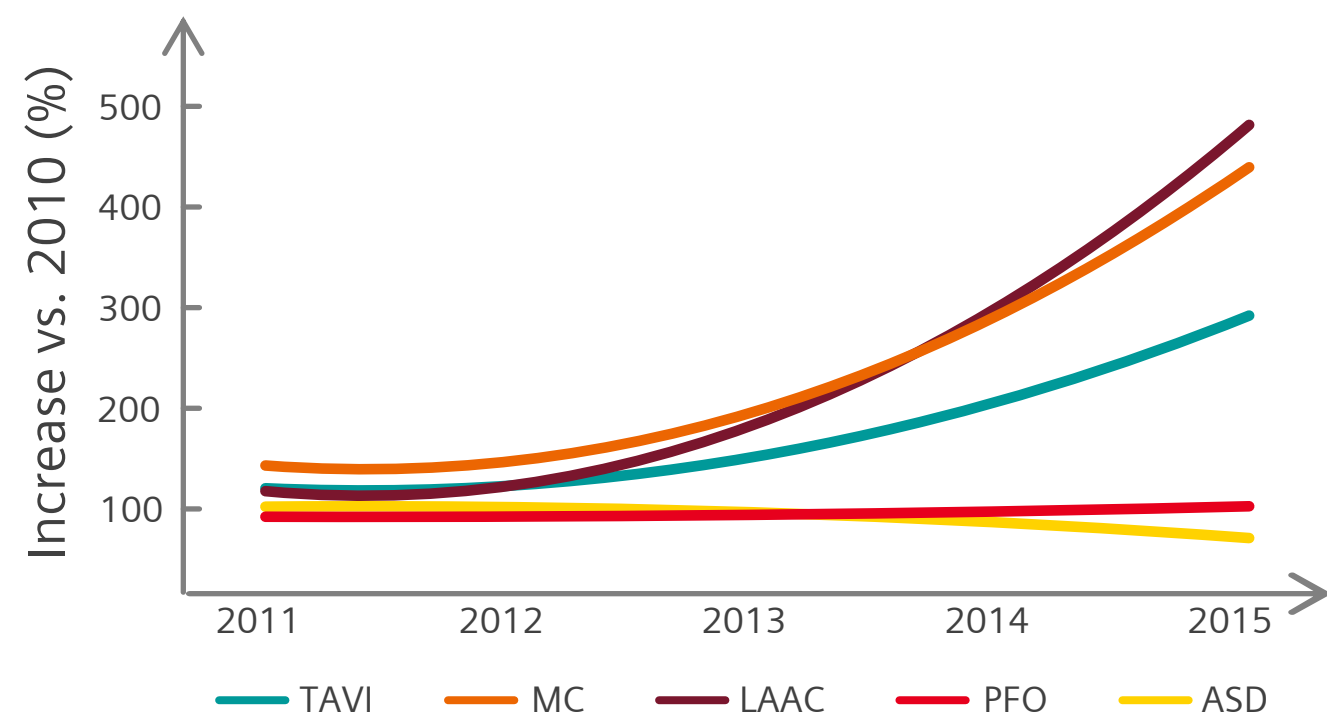
SIEMENS
Healthineers 

Master the new landscape of structural heart disease procedures

As the population ages, more and more people are presenting with structural heart disease (SHD). Interventions are increasing.

With the ACUSON AcuNav Volume ICE catheter, you can take on the most complex cases with the highest standard in visibility control.

Growth in SHD procedures¹



Abbreviations: ASD, atrial septal defect; LAAC, left atrial appendage closure; MC, MitraClip™; PFO, patent foramen ovale; TAVI, transcatheter aortic valve implantation;

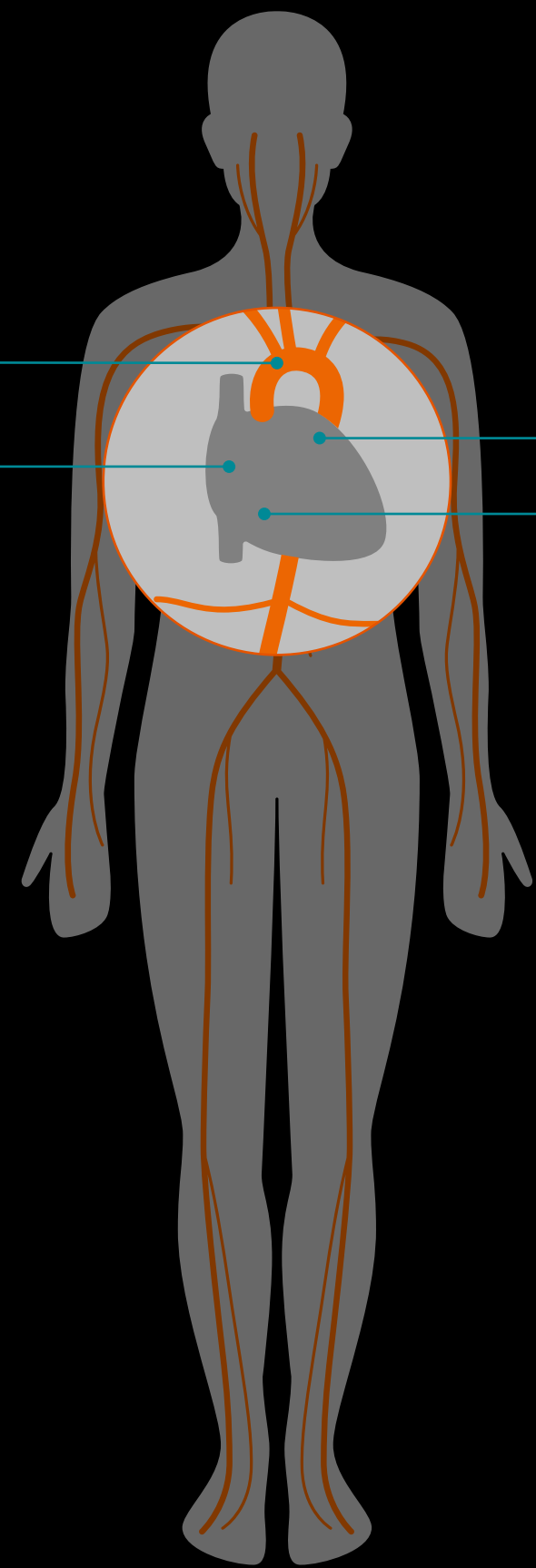
Challenging cases are on the rise

Moderate/Severe Aortic Stenosis
1 in 8
people aged >75 yrs¹

Moderate/Severe Mitral Regurgitation
1 in 10
people aged >75 yrs²

Atrial Fibrillation
5X more likely
for people aged >65 yrs³

Moderate/Severe Tricuspid Regurgitation
1 in 10
people aged >75 yrs⁴



1. Dudek D, Barbato E, Baumbach A, Windecker S, Haude M. Current trends in structural heart interventions: an overview of the EAPCI registries. *EuroIntervention*. 2017 May 15;13(Z):Z11-Z13.
2. Little S. Structural Heart Interventions. *Methodist Deakey Cardiovasc J*. 2017 Jul-Sep;13(3):96-97.
3. CDC AF Fact Sheet
4. Bhatia N, Basra SS, Skolnick AH, Wenger NK. Aortic valve disease in the older adult. *J Geriatr Cardiol*. 2016 Dec;13(12):941-944.

The next generation of interventional imaging for structural heart procedures gives you

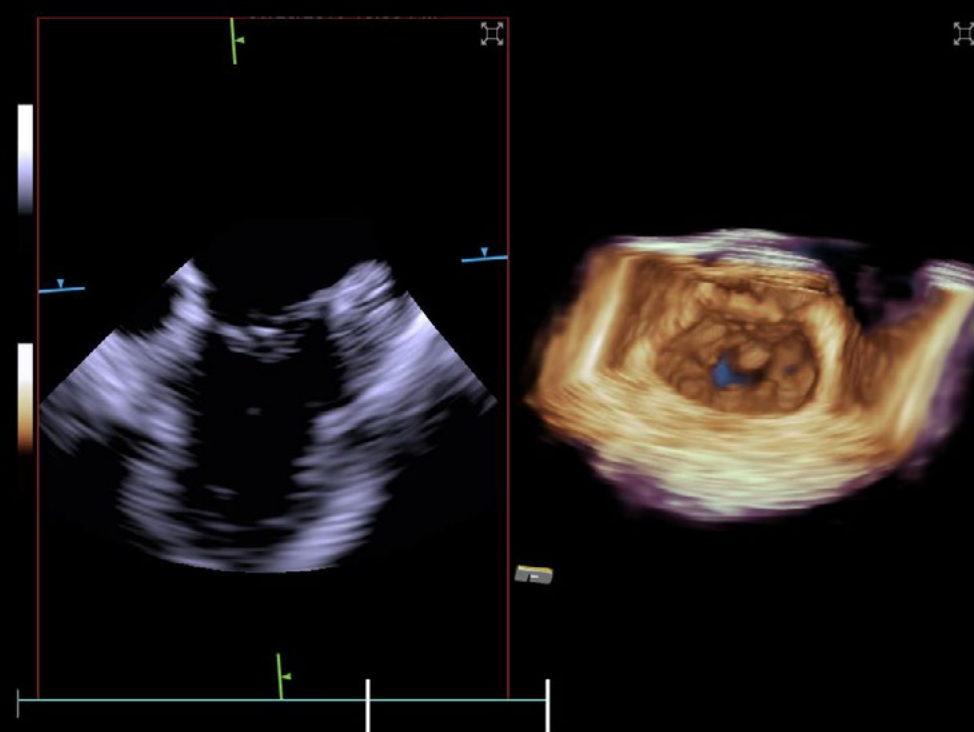
greater command over visualization and outcomes*

When you're in command, interventions have more consistent and positive outcomes. TEE and 2D ICE aren't enough.

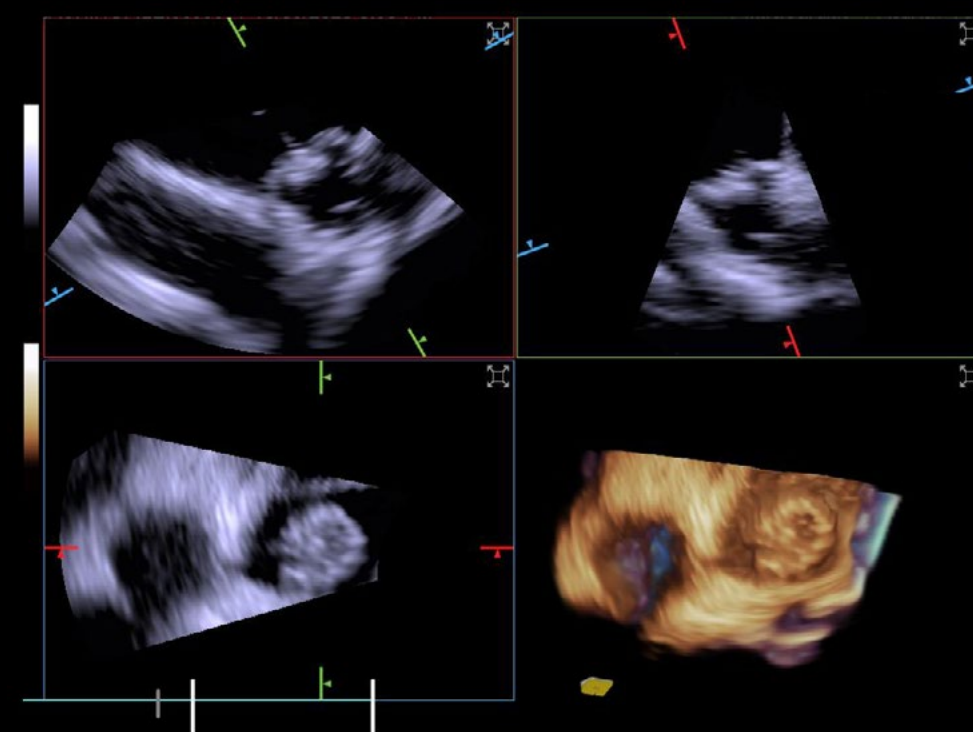
You need tools that:

- reduce variables and complications by enabling conscious sedation compared to general anesthesia;
- allow for greater autonomy;
- provide more command over visualization.

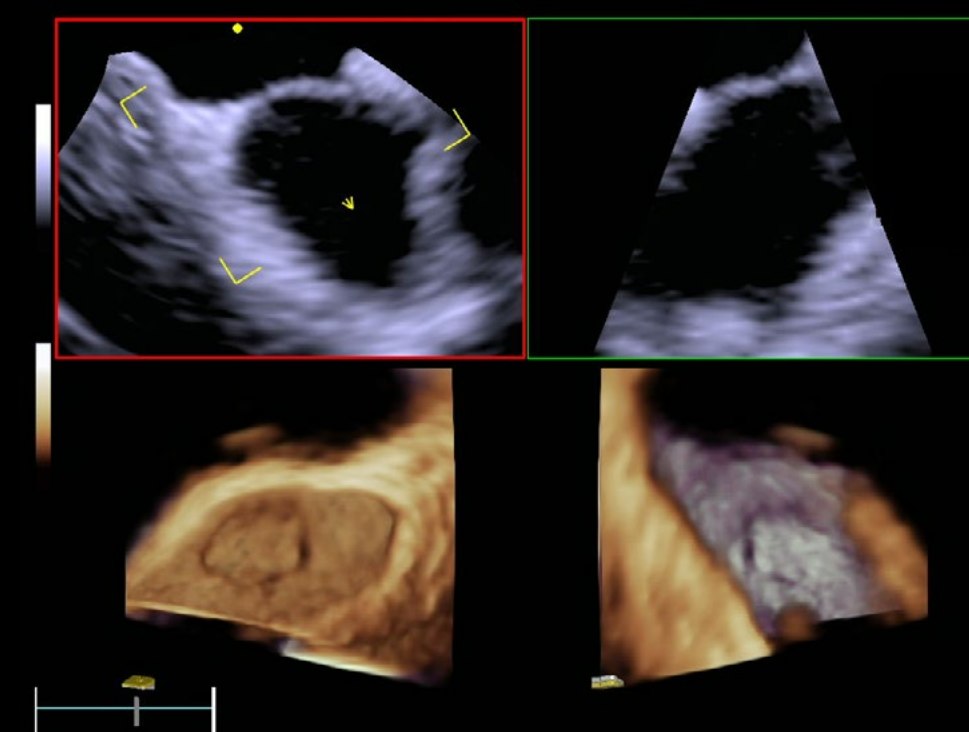
* The ACUSON AcuNav 4D ICE catheter enables precise orthogonal plane measurements with reference planes compared to 2D ICE and TEE catheter manipulations.



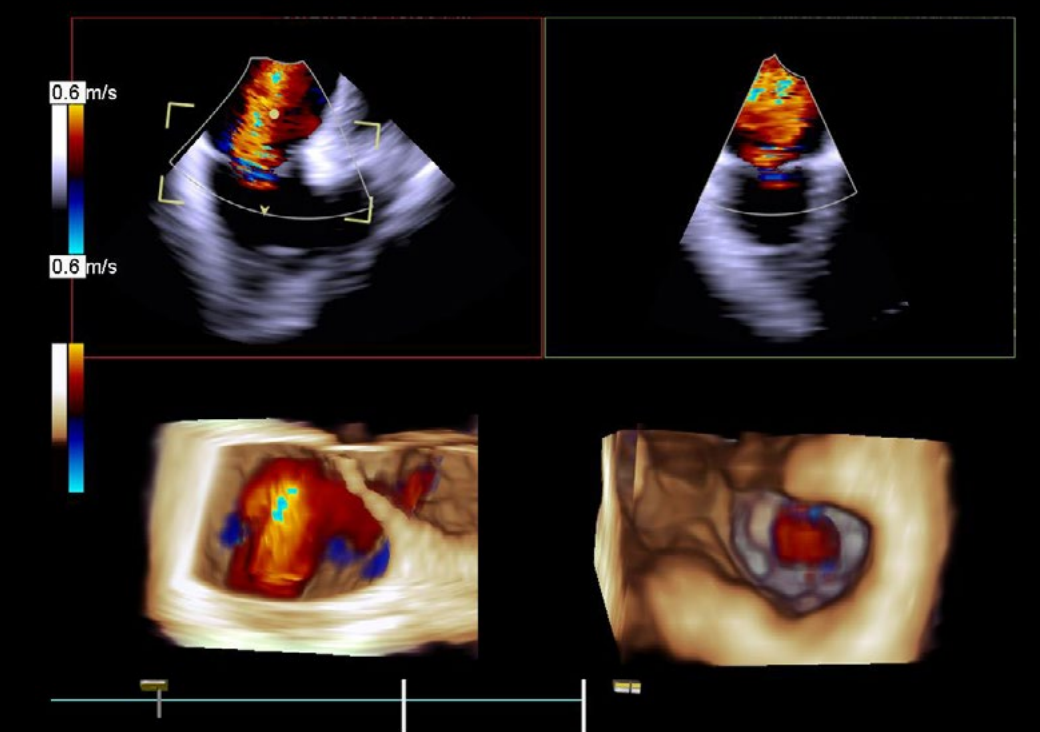
4D Volume of the mitral valve with one catheter position and multiplanar reconstruction.



Measure LAAC device compression efficiently with multiplanar reconstruction.



Visualize the interatrial septum in 4D for accurate transseptal puncture.



Real-time volume color Doppler visualization of tricuspid regurgitation.

This is command, in your hands

Comprehensive visualization

See full details of the heart in dynamic, 4D motion even while imaging patients in arrhythmias. Comprehensive, instant visualization enables more precise navigation, guidance, and measurement.¹

Clear line of sight

Achieve direct imaging of the tricuspid valve. A clear line of sight reduces shadowing and bypasses anatomical obstructions that can make imaging uncertain.²



Confident operation

Take charge of image guidance. Confident operational control is in your hands with simultaneous tableside command of the ultrasound system and the catheter, which can be controlled with one hand.

Consistent, reliable data

Get accurate LAAC measurements from a single view.³ Consistent, reliable data give you confidence to confirm PASS criteria.

Conscious sedation

Freedom to use conscious sedation means not compromising safety for optimal outcomes.

1. Compared with 2D ICE.
2. Compared with TEE.
3. Accurate compared to 2D ICE, where you can ensure that your measuring in the orthogonal plane with reference plane manipulation compared to 2D ICE and TEE catheter manipulations.

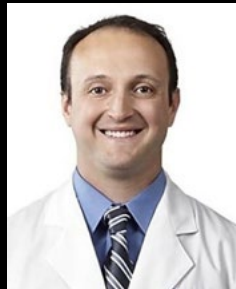
What experts have to say...

“In patients with relative or absolute contraindication to TEE, the 4D Volume ICE catheter allows for alternative imaging guidance that was not previously available. Availability of this catheter allows us to help treat such patients, and thereby help improve their quality of life.”



Dr. Gagan Singh
Associate Clinical Professor
UC Davis Health
Sacramento, California

“The 4D Volume ICE ... allows clear, real-time 3D/4D visualization and placement of left atrial appendage occlusion devices. The Multiplanar Reconstruction functionality allows me to reliably assess the PASS criteria necessary to safely implant the WATCHMAN device.”

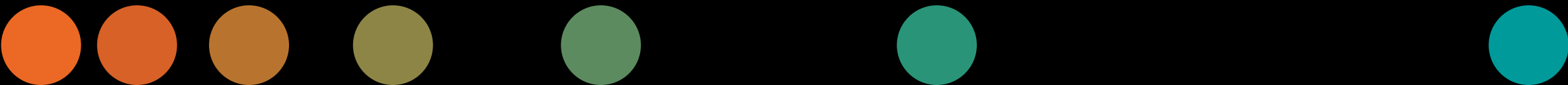


Dr. Carlos Sanchez
Interventional Cardiologist
OhioHealth Riverside Methodist Hospital
Columbus, Ohio

“Procedural guidance with The AcuNav Volume ICE Catheter, is the next frontier during trans-catheter structural heart interventions.”



Dr. Mani Vannan
Cardiology Specialist
Piedmont Hospital
Atlanta, Georgia



Take command to the next level

Master advanced AcuNav Academy training.

- Elevate your visualization proficiency.
- Increase your autonomy over structural heart procedures.
- Take advantage of proctorship opportunities.

Leverage the ACUSON SC2000 PRIME ultrasound system.

- Utilize the most complete suite of 2D and 4D AI-powered tools on the market.
- Gain precision and speed with advanced imaging and measurement tools.
- Stay current with continuous improvements for hardware and software, and new remote service support.
- Connect to the SC2000 ultrasound system with the SwiftLink catheter connector.

Increase operational efficiency.

- Schedule interventions with more flexibility when you don't need to wait on general anesthesia.
- Empower yourself to be more autonomous, efficient, and impact more lives.





ACUSON AcuNav Volume ICE Catheter

**Advanced visualization is
within reach**

The only ICE catheter with the ACUSON AcuNav Volume 5 Points of Command:



**Comprehensive
visualization**



**Confident
operation**



**Consistent,
reliable data**



**Conscious
sedation**



**Clear line
of sight**

SIEMENS
Healthineers

The products/features mentioned in this document may not be commercially available in all countries. Due to regulatory reasons their future availability cannot be guaranteed. Please contact your local Siemens Healthineers organization for further details.

ACUSON AcuNav and ACUSON SC2000 are trademarks of Siemens Medical Solutions USA, Inc.

WATCHMAN is a trademark of Boston Scientific Corporation.

At Siemens Healthineers, our purpose is to enable healthcare providers to increase value by empowering them on their journey towards expanding precision medicine, transforming care delivery, and improving patient experience, all enabled by digitalizing healthcare.

An estimated five million patients worldwide everyday benefit from our innovative technologies and services in the areas of diagnostic and therapeutic imaging, laboratory diagnostics and molecular medicine as well as digital health and enterprise services.

We’re a leading medical technology company with over 120 years of experience and 18,500 patents globally. With over 50,000 employees in more than 70 countries, we’ll continue to innovate and shape the future of healthcare.

<https://www.siemens-healthineers.com/en-us/ultrasound/cardiovascular/acunav-volume-ice>

Siemens Healthineers Headquarters

Siemens Healthcare GmbH
Henkestr. 127
91052 Erlangen, Germany
Phone: +49 9131 84-0
siemens-healthineers.com

Manufacturer

Siemens Medical Solutions USA, Inc.
Ultrasound
22010 S.E. 51st Street
Issaquah, WA 98029, USA
Phone: 1-888-826-9702
siemens-heathineers.com/ultrasound