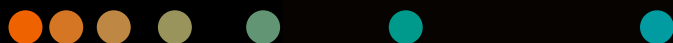


UpTeam Services

# teamplay Fleet Connect

Streamline your fleet management.  
Optimize your asset performance.



As a healthcare provider, you have to manage a large fleet of medical devices. To be able to assess your fleet's performance and make confident decisions holistically, you need access to real-time insights in one place. However, in many cases this data isn't quickly or easily available. It is often scattered across different locations or simply outdated – and this requires time-consuming manual effort to get the transparency and data quality you need.

teamplay Fleet Connect<sup>1</sup> is a teamwork Fleet premium solution that enables you to connect your institution's service management software with teamwork Fleet for streamlined fleet management. It allows you to optimize your asset performance through confident, data-driven decisions in your service management solution by connecting and sharing equipment and service data with selected healthcare service management solutions.

teamplay Fleet Connect allows you to:

- **Increase your data transparency and save time** by having up-to-date equipment and service-related information from across your institutions digitally available in your service management system
- **Improve your data quality and reliability** by connecting service processes to facilitate faster and more confident data-driven decision-making
- **Enhance your operational efficiency** by avoiding non-value adding, manual data maintenance activities through automated data synchronization

---

Learn more about teamwork Fleet Connect



[siemens-healthineers.com/teamplay-fleet-connect](https://siemens-healthineers.com/teamplay-fleet-connect)

---

## How teamwork Fleet Connect<sup>1</sup> works



### teamwork Fleet

is an online software solution that provides you with relevant equipment and service information from Siemens Healthineers.

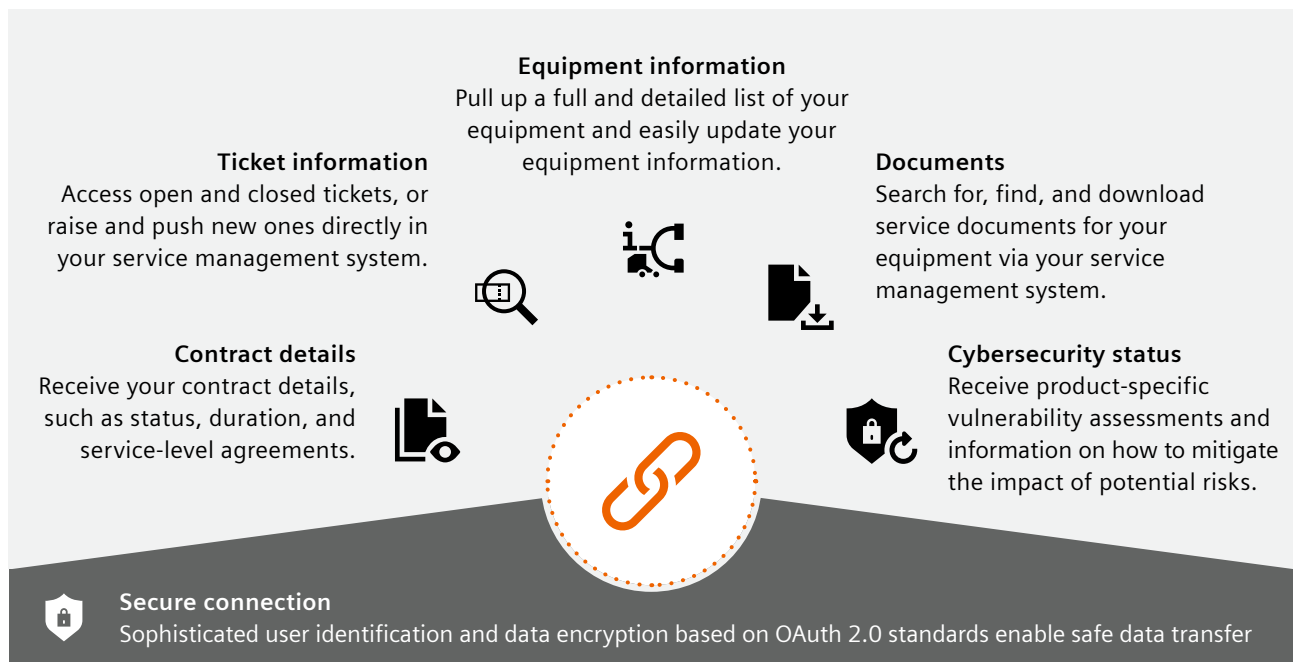
### teamwork Fleet Connect

allows you to connect teamwork Fleet with your service management solution.

### Your service management solution

can push and pull equipment and service information, configurable to the level of integration you need.

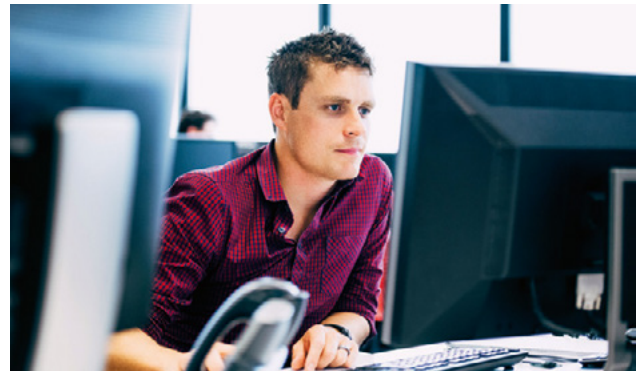
## teamplay Fleet Connect allows you to seamlessly integrate and interact



## Easy and flexible integration



**Integration through commercially available solutions:** Selected cooperation partners provide dedicated plugins and enable easy onboarding for their service management solutions.



**Integration through self-developed solutions:** For self-developed solutions we offer comprehensive training documentation and direct support during integration.

<sup>1</sup> Subscription required. Availability of subscription and individual product features depend on country.

### Siemens Healthineers Headquarters

Siemens Healthcare GmbH  
Henkestr. 127  
91052 Erlangen, Germany  
Phone: +49 9131 84-0  
[siemens-healthineers.com](https://www.siemens-healthineers.com)

The products/features and/or service offerings (here mentioned) are not commercially available in all countries and/or for all modalities. If the services are not marketed in countries due to regulatory or other reasons, the service offering cannot be guaranteed. Please contact your local Siemens Healthineers organization for further details.