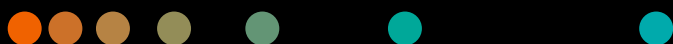


Study protocol

Subtalar joint dislocation

Ortho/trauma surgery



Case description

Patient history

Male, age group: 31–45

Diagnosis

The patient fell from a height of 2.5 m. Subtalar and Chopart joint dislocation with fracture of the talus and os cuboideum (Figs. 1–3).

Surgical procedure

Reduction of the subtalar joint. Open reduction of the subtalar joint. Open reduction and K-wire fixation. Check results (Figs. 4–10).

Conclusion

Final X-rays to check correct repositioning of the subtalar and Chopart joints. Documentation of correct placement (Figs. 4–10).

Tips and tricks

Attempt closed reduction initially. If unsuccessful, proceed with open reduction and use an additional distractor. Secure temporary K-wire fixation of the subtalar joint. Verify correct repositioning with anterior, lateral, and oblique view X-rays (Figs. 4–10).

Courtesy of

BG Hospital Ludwigshafen,
Germany

System and software

Cios Select mobile C-arm

Clinical images

Figure 1



Preoperative X-ray

Figure 2



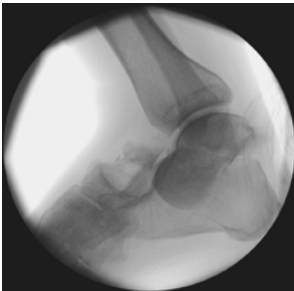
Preoperative X-ray

Figure 3



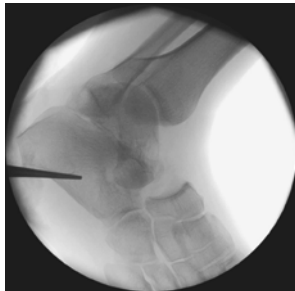
Preoperative X-ray

Figure 4



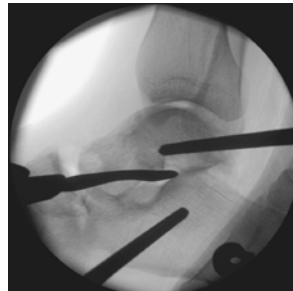
Failed closed reduction of the subtalar joint dislocation

Figure 5



Open reduction of the subtalar joint

Figure 6



Open reduction of the subtalar joint with an additional distractor. Lateral view

Figure 7



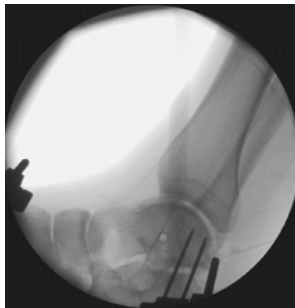
Temporary K-wire fixation of the subtalar joint. Anterior view

Figure 8



Anterior view

Figure 9



Lateral view

Figure 10



Oblique view

Final X-rays to check correct repositioning of the subtalar and chopart joint documentation of correct placement of two K-wires and the external fixator

The information presented in the study protocol is for illustration only and is not intended to be relied upon by the reader for instruction as to the practice of medicine. Any health care practitioner reading this information is reminded that they must use their own learning, training and expertise in dealing with their individual patients. This material does not substitute for that duty and is not intended by Siemens Healthineers to be used for any purpose in that regard.

The statements by customers of Siemens Healthineers presented here are based on results that were achieved in the customer's unique setting. Since there is no "typical" hospital and many variables exist (e.g., hospital size, case mix, level of IT adoption), there can be no guarantee that other customers will achieve the same results.

On account of certain regional limitations of sales rights and service availability, we cannot guarantee that all products included in this case are available throughout the Siemens Healthineers sales organization worldwide.

All rights reserved.

Siemens Healthineers Headquarters

Siemens Healthineers AG
Siemensstr. 3
91301 Forchheim, Germany
Phone: +49 9191 18-0
[siemens-healthineers.com](https://www.siemens-healthineers.com)