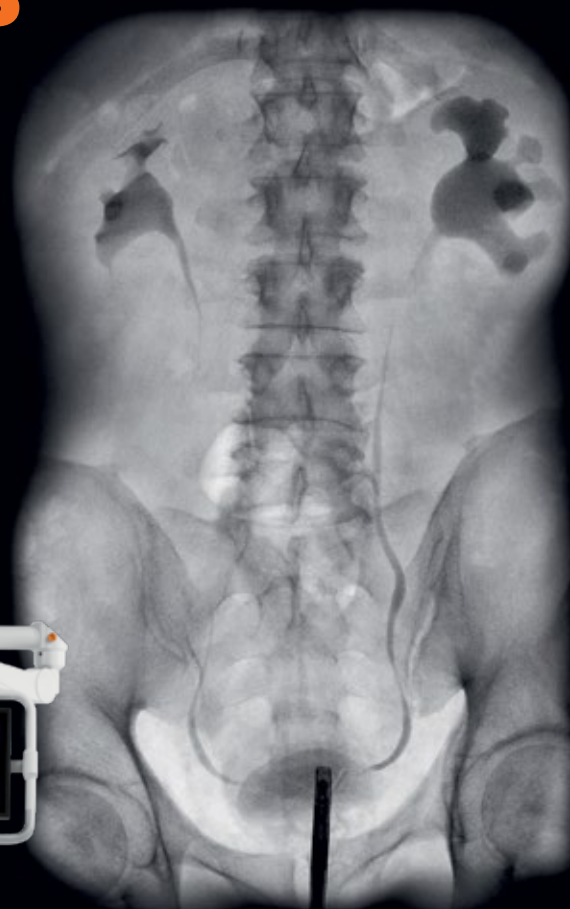


Urooskop Omnia Max

Sharper images made smarter

siemens-healthineers.com/urooskop-omnia-max

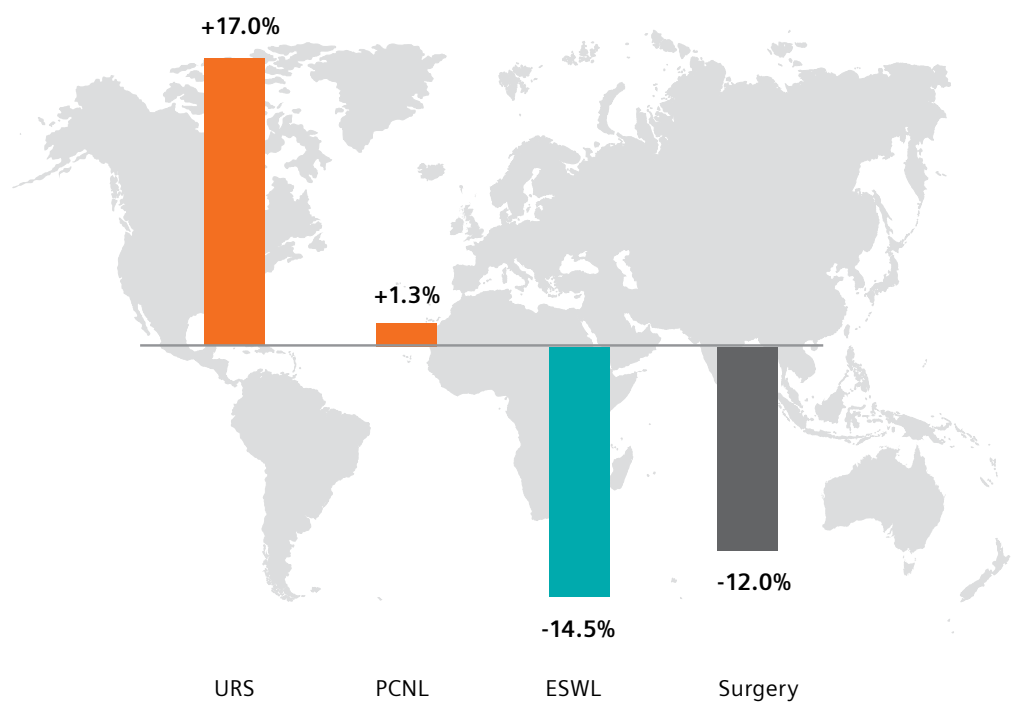


Urology examinations are changing

Over the last years, minimally invasive procedures such as PCNL or URS have increased significantly compared with invasive procedures for treating various diseases of the urinary tract such as prostate cancer and kidney stones. Also, recent studies show that even non-invasive ESWL procedures are being replaced by minimally invasive procedures.

Uroskop Omnia Max meets these changing demands: It offers a full-field FD for a better overview of the entire urogenital tract, multi-modality viewing, and unmatched patient access from both sides.

Procedures in urology are changing toward minimally invasive techniques worldwide



The share of total treatment for urolithiasis increased for URS, is stable for PCNL, and decreased for lithotripsy and open surgery. Graphic shows the global results of a study conducted in Australia, Brazil, UK, and USA from 1996 – 2013.¹



Reduce time and effort with Urooskop Omnia Max

In urology, inferior image quality, insufficient system ergonomics, and suboptimal image management can result in uncertain decision-making, cumbersome case preparation, and even delays during an intervention. Urooskop Omnia Max helps you successfully meet these challenges.

Offering superior imaging technology, free patient access, and an unhindered view of all modalities¹, Urooskop Omnia Max supports you in optimizing operational efficiency and patient safety. You can capture the entire Kidney-Ureter-Bladder (KUB) tract with a single shot in exceptional image quality at the lowest possible dose – and see even the finest details.

Free patient access from all sides and smart one-button system positioning result in faster, more accurate examinations and interventions. A mobile lithotripsy solution¹ allows both diagnosis and therapy in the same room. And you will even gain Fleet Level Benefits across your entire X-ray imaging fleet from Siemens Healthineers.

Urooskop Omnia Max has been designed to provide sharper images, smart workflows, and smart integration – so you can concentrate on what really matters: your patients.

Discover Urooskop Omnia Max

At a glance	4
Sharper images	6
Smart workflows	8
Smart integration	10
Clinical gallery	12
Fleet Level Benefits	13
Innovative services	13
Technical specifications	14

¹ Option

Urooskop Omnia Max at a glance



Offer low-dose imaging

The large dynamic flat detector of Urooskop Omnia Max delivers sharper images and acquires the entire KUB in one shot. Our CARE dose reduction program decreases radiation exposure without compromising image quality.

Get access from all sides

Thanks to the patented curved design of the X-ray column, Urooskop Omnia Max offers unrestricted patient access from all four sides. Anesthesiologists can stay at the table head, regardless of the clinical application.

Improve your processes

Experience the fastest way to the correct system position in every examination: Urooskop Omnia Max offers automated and simultaneous movements. Its intuitive controls allow efficient system operation even from within the sterile field. What's more, you can navigate from the KUB to a desired image detail quickly, precisely, and radiation-free¹.



Personalize when it matters

Imaging children who are ill and in pain can be challenging. Uroskop Omnia Max provides child-friendly and efficient low-dose examinations. Dedicated accessories for pediatrics¹ help you easily and safely position children and reduce movements during an examination.

Keep your IT secure

To protect your IT equipment and patient data from cyber attacks, Uroskop Omnia Max has been designed to be in compliance with the requirements of the U.S. Department of Defense. This high level of cybersecurity is standard right from the start. And role-specific user rights support an easy workflow.

Enjoy Fleet Level Benefits

Standardize, analyze, and secure your imaging fleet with our specific solutions across our entire X-ray portfolio – and gain valuable Fleet Level Benefits: consistency, transparency, and confidence for improved efficiency and greater staff and patient satisfaction.

¹ Option

Sharper images with CARE – with the lowest possible dose

Limited anatomical coverage and image quality can result in low diagnostic confidence and a higher patient dose. Delivering distortion-free, high-quality dynamic sequences as well as static images of the entire KUB tract in one exposure and at low dose, Urooskop Omnia Max supports effective treatments.



One shot – high-quality KUB images

See more with the 43 cm x 43 cm (17" x 17") dynamic flat detector. It delivers distortion-free, high-quality dynamic sequences and static images of the entire KUB tract in one exposure – offering full patient coverage.

Less noise – better detail recognition

DiamondView MAX significantly reduces noise while increasing detail contrast and sharpness in your radiographic images. Predefined settings based on organ programs help you save time and effort and further reduce dose.

All in one place – side by side

SmartView¹ lets you view and compare a variety of images side by side during interventions. You can display live and reference images from endoscopy, ultrasound, and all DICOM modalities – next to your radiography or fluoroscopy images. The plug-and-play interface HD VideoManager¹ even lets you view endoscopy images in High Definition (HD). So you have everything you need in one place and in exceptional image quality.

CARE features

The comprehensive CARE² dose reduction program decreases radiation exposure for patients and staff without compromising image quality:

- **CAREPROFILE¹** – dose-free image collimation
- **CAREPOSITION¹** – dose-free patient repositioning
- **FluoroLoop¹** – retrospective storage and review of fluoroscopy sequences
- **Snapshot Mode¹** – immediate low-dose image capture
- **Histogram Dose Regulation¹** – automatic dose regulation for more efficient workflows
- **Digital Zoom¹** – dose-free zooming-in on clinical images
- **Proactive FluoroLoop¹** – avoid additional radiation dose due to prospective storage and review of fluoroscopy sequences

Faster navigation – lower dose

CAREPROFILE¹ and CAREPOSITION¹, for example, let you navigate completely radiation-free to a detail in a KUB image while ensuring full orientation. Easily navigate to half-side, kidney or bladder by simply pushing a memory button – saving time and increasing patient safety.

Safe imaging – even of children

Children have a much greater sensitivity to radiation than adults. Urooskop Omnia Max supports fast, safe, and correct pediatric imaging – assisted by radiation-free positioning¹ and dedicated parameters for low dose.

¹ Option

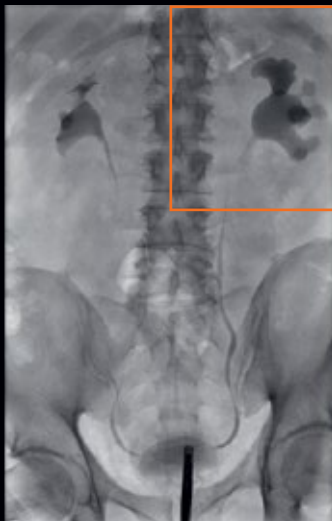
² Combined Applications to Reduce Exposure (CARE), a Siemens Healthineers initiative for dose reduction

“Urooskop Omnia Max has a very large field of view and several different imaging modes. The high quality is just unbelievable.”

Bradley McIver, MD
Shannon Medical Center, San Angelo, USA

Targeted navigation¹ while
keeping full orientation –
completely radiation-free.

Sharper images in all procedures:
DiamondView MAX reduces image noise and enhances
soft-tissue contrast – for more detail without increasing dose.



Targeted navigation



With DiamondView MAX



Without DiamondView MAX

Smart workflows – from patient access to system positioning

In some urology procedures, patient access can be an issue – to the point that the entire OR setup has to be adjusted, which slows down the speed of care. By offering truly unrestricted patient access from all sides, Urooskop Omnia Max eliminates the need for patient repositioning.



Patented design – free access

The patented curved X-ray column offers truly unrestricted patient access from all four sides. You can clearly see your images from any position. Also, there is no need to reposition the patient, whatever the procedure, and the anesthesiologist can always remain at the table head. Your benefits: less preparation time, faster examinations, and significant time savings.

Faster operation – reproducible positions

With SmartMove, Urooskop Omnia Max automatically takes the fastest and shortest route to any position you need – at the touch of a button. With up to seven predefined, automatic, and simultaneous functions, you can achieve new levels of consistency and efficiency in every examination.



Easy adjustment – for small and slender patients

Quickly and easily adapt Urooskop Omnia Max to the needs of children or very slender adults. Just move the grid into a parking position – motor-driven, with the push of a button.

Safe operation – intuitive and sterile

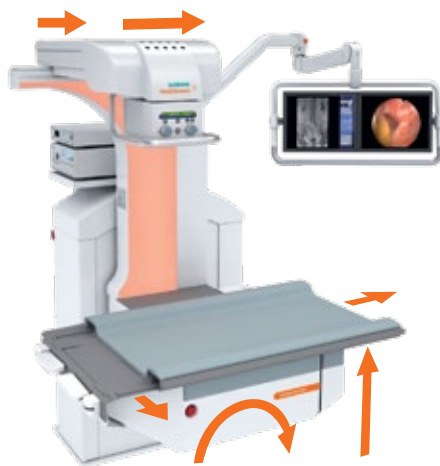
Operate all system movements, video functions, and exposures in X-ray and fluoroscopy safely and intuitively with the multifunctional foot switch¹. The hand-held control even allows easy, intuitive remote operation of all system and imaging functions within the sterile field.

Easy cleaning – infection control

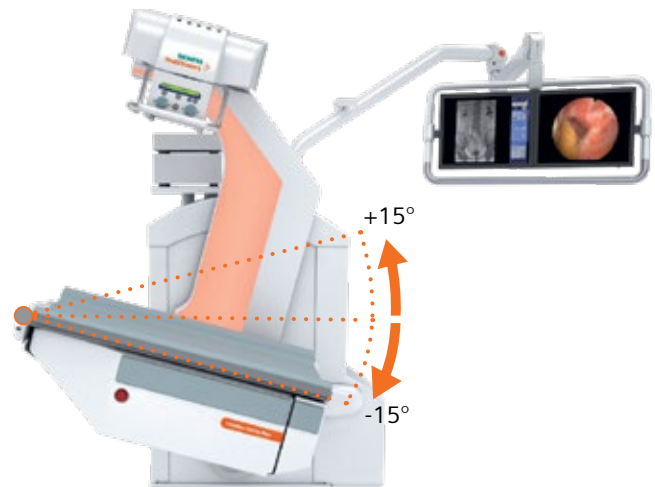
From seamless covers and sealed tableside modules to a comprehensive cleaning concept: Urooskop Omnia Max has been designed to support both your cleaning and infection control measures.

"Free access to the patient, individually adjustable table height, and intelligent table movements are further features that make working with Urooskop Omnia Max easy and convenient. In addition, patient comfort is increased while examination time is reduced."

Michael Straub, MD
Technische Universität München, Klinikum rechts der Isar, Munich, Germany



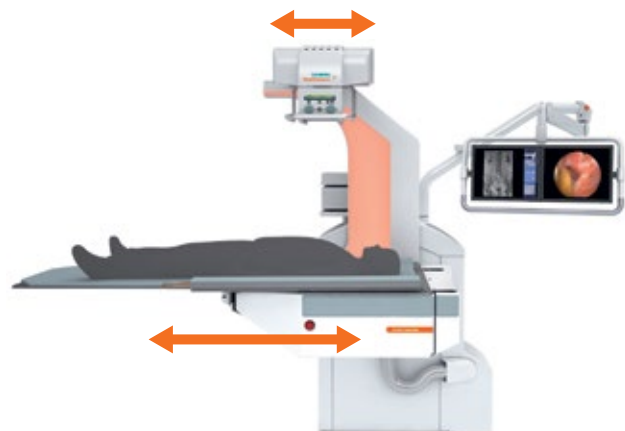
By pushing a single button, the system moves to where you need it; e.g., from the patient transfer position to your standard working position.



When moving to a Trendelenburg position, the table height is leveled around the perineal end to keep your working height constant.



When moving to a sitting micturition position, the patient can sit comfortably with feet on the ground.



Through a combination of table, tube, and detector movements, longitudinal patient coverage can be extended to up to 98 cm.

Smart integration – for more efficiency and safety

Having to fetch required images from various sources or transfer patients to different rooms can disrupt processes and create wait times. Enhance patient satisfaction and save valuable time with our one-stop solutions in a safe, digital environment.



Integrate your digital workflow – seamlessly

Get a fully digital, one-stop imaging workflow that covers everything from patient registration to documentation. Urooskop Omnia Max also features integrated quality management that allows you to easily monitor your system's performance and determine your staff's training needs.

Multimodality images – stored together

SmartView¹ allows convenient image storage. You can file images from all connected modalities along with X-rays as DICOM images in a single patient folder with HD EndoStore¹. Just one more click and they will be sent to your PACS as a bundled package – for fast retrieval any time. And you can connect up to six image sources simultaneously to the plug-and-play interface of the HD VideoManager, and even view endoscopy in High Definition (HD) resolution.



One workplace – efficient workflow

From urodiagnostics and endourology to (video) urodynamics and lithotripsy: Covering a wide range of procedures, Urooskop Omnia Max is a urology workplace that boosts both your workflow and efficiency.

Mobile lithotripsy – cost-effective solution

The mobile lithotripter¹ (SWL) MODULITH SLK »intellect«² is ideal for all stone therapies. It allows both diagnosis and therapy in one room with no patient transfer. Offer your patients full service with a manageable investment.

Protect both system and patient data – safely

To safeguard your system and patient health data from cyberattacks, Urooskop Omnia Max offers a comprehensive cybersecurity package that includes whitelisting, 90-days hotfixes, encrypted data storage, and an advanced security package¹. This helps you comply with regulations for keeping patient data safe, confidential, and intact.

¹ Option

² From STORZ MEDICAL. Not available in all countries.

“For orientation during urologic interventions, I benefit from the system’s ability to simultaneously display X-ray images and on a second screen endoscopic or sonographic images. Storing all these images is an important function for a complete case documentation.”

Steffen Krause, MD
Kepler Universitätsklinikum GmbH, Linz, Austria



Connect both endoscopy and ultrasound to the HD VideoManager¹ and see them side by side with your X-ray and fluoroscopy images.



Connect a PACS viewer to the HD VideoManager¹ and see multimodality DICOM images together with your live X-ray and fluoroscopy images.



With the HD VideoManager¹ monitor signals can also be fed out, for example, to a urodynamic system.

See anatomical details in high image quality

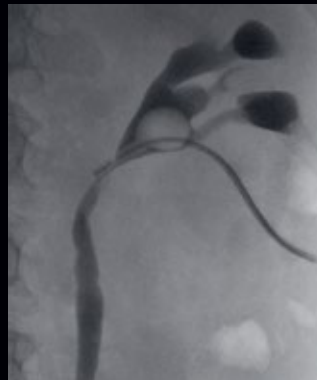
To make fast and confident diagnostic decisions, you need high image quality. Uroskop Omnia Max offers advanced imaging and post-processing technologies and a large field of view.



Intravenous pyelogram (IVP)¹



Conduitogram



Percutaneous nephrostomy (PCN)



Ureterorenoscopy (URS)



Retrograde pyelography



Double-J stent insertion



Retrograde urethrogram
(Lauenstein)



Retrograde urethrogram
(lateral)



Cystogram (a.p.)



Cystogram (lateral)

Fleet Level Benefits

Unlock your potential – and increase the efficiency across your imaging fleet

As healthcare provider you are forced to do more with less, you have to run your radiology department more efficiently. A high level of complexity makes it challenging for you to reach the desired efficiency. Siemens Healthineers offers specific solutions across the entire X-ray portfolio

that let you standardize, analyze, and secure your fleet. Experience consistency, transparency, and confidence as valuable Fleet Level Benefits and improve outcomes, increase efficiency – and achieve greater staff and patient satisfaction.



Standardize for consistency

- Systems with highly intuitive user interfaces and common workflows
- Staff with consistent knowledge level
- Unified image quality and same image impression



Analyze for transparency

- Consolidated data in one place
- Analyzed and evaluated data turned into valuable information



Secure for confidence

- Protect large IT network and imaging fleet with one cybersecurity philosophy
- Same maintenance cycles and update strategies for the whole fleet

Benefit from innovative services

Increasing value by partnering throughout the entire lifetime of your equipment

Equipment Maintenance & Monitoring

Reliably servicing your Uroskop Omnia Max allows you to identify deviations from current norms to maximize equipment availability.

Education Management

Personalized education and training improves your staff's expertise as well as your equipment efficiency.

Fleet Management

A transparent overview of your fleet allows you to manage the performance and maintenance of your Siemens Healthineers equipment, 24/7.

Performance Management

An intelligible overview of your radiography performance data helps you make prompt and well-informed decisions.

Asset Management & Planning

Access to innovative medical technology and equipment throughout the entire contract life-time allows you to maximize focus on patient care.

Accessory Solutions

Products from our partner companies complement your use of our equipment in your daily workflow.

Business Modelling & Financing

Customized business and financial models address your budgetary and enterprise needs enabling you to remain more competitive.

Departmental Layout Optimization

3D-Visualization and digital twin analysis create more efficient workflows and a more enjoyable working environment.

Technical specifications

Tube & Generator

- Choice of 65 kW or 80 kW¹ high-frequency generator
- High anode heat capacity (820 kHU) and air-cooled X-ray tube assembly

Fully motorized table

- Tilting $\pm 90^\circ$ for examinations with patient seated or standing
- Trendelenburg tilt $\pm 15^\circ$ around perineal table end
- 72 cm to 122 cm (28" to 48") adjustable table height
- Table size of 115 cm x 76 cm (45" x 30")
- Longitudinal ± 20 cm (8") and transverse ± 12.5 cm (5") movements
- Max. patient capacity of 272 kg (600 lbs)

Image acquisition & post-processing

- 43 cm x 43 cm (17" x 17") dynamic flat detector for excellent static and dynamic imaging
- CAREVISION pulsed fluoroscopy with 30, 15, 10, 7.5, and 3 p/s
- Workstation with two 48 cm (19") TFT displays
- DiamondView MAX for increased image sharpness and soft tissue detail
- Pediatric organ programs

MoodLight¹

- Creates a friendly working environment
- Color and transitions configurable by the user

Workflow

- System-mounted swivel arm with two large 48 cm (19") TFT displays
- SmartView¹ – access to all imaging modalities and display of live images from multiple sources such as endoscopy, ultrasound, or review workstations
- Single remote console for control of table, tube, detector movements
- Multifunctional foot switch¹ – intuitive, sterile control of all system movements and video functions, exposure, and fluoroscopy



Why Siemens Healthineers

At Siemens Healthineers, our mission is to enable healthcare providers to increase value by empowering them on their journey towards expanding precision medicine, transforming care delivery, and improving patient experience, all enabled by digitalizing healthcare.

An estimated five million patients worldwide everyday benefit from our innovative technologies and services in the areas of diagnostic and therapeutic imaging, laboratory diagnostics and molecular medicine as well as digital health and enterprise services.

We're a leading medical technology company with over 120 years of experience and 18,500 patents globally. With over 50,000 employees in more than 70 countries, we'll continue to innovate and shape the future of healthcare.



Urooskop Omnia Max is not commercially available in all countries. Due to regulatory reasons their future availability cannot be guaranteed. Please contact your local Siemens Healthineers organization for further details.

The statements by customers of Siemens Healthineers described herein are based on results that were achieved in the customer's unique setting. Because there is no "typical" hospital and many variables exist (e.g., hospital size, case mix, level of IT and/or automation adoption) there can be no guarantee that other customers will achieve the same results. The speaker is employed by an institution that provides Siemens Healthineers product reference services for compensation pursuant to a written agreement.

On account of certain regional limitations of sales rights and service availability, we cannot guarantee that all products/services/features included in this brochure are available through the Siemens Healthineers sales organization worldwide. Availability and packaging may vary by country and are subject to change without prior notice.

The information in this document contains general descriptions of the technical options available and may not always apply in individual cases.

Siemens Healthineers reserves the right to modify the design and specifications contained herein without prior notice. Please contact your local Siemens Healthineers sales representative for the most current information.

In the interest of complying with legal requirements concerning the environmental compatibility of our products (protection of natural resources and waste conservation), we may recycle certain components where legally permissible. For recycled components we use the same extensive quality assurance measures as for factory-new components.

Any technical data contained in this document may vary within defined tolerances. Original images always lose a certain amount of detail when reproduced.

International version.
Not for distribution or use in the U.S.

Image on title page is courtesy of Klinikum Ingolstadt, Ingolstadt, Germany

Siemens Healthineers Headquarters

Siemens Healthcare GmbH
Henkestr. 127
91052 Erlangen, Germany
Phone: +49 9131 84-0
siemens-healthineers.com