

Weber B fracture

Multitom Rax Real3D¹ clinical case
Artemed Hospital, Munich, Germany



¹Option

Results from case studies are not predictive of results in other cases. Results in other cases may vary.



Study ID 5aad582

Clinical background and indication for Multitom Rax Real3D¹ examination

Patient

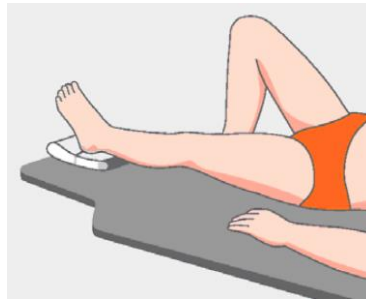
Male | Age 43 years

Anamnesis

Alcoholic patient with injury after fall.

Indication for Real3D¹ examination

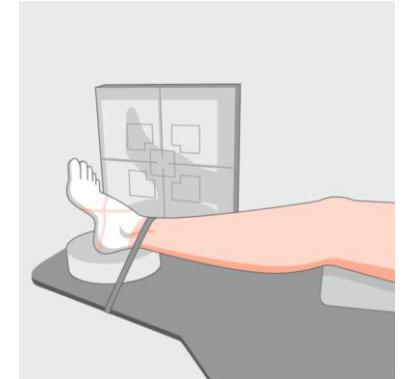
Weber B fracture was seen on X-ray and a 3D study was requested for preoperative planning.



*Position the patient with feet first on the table.
If possible, have the patient take the other foot out of the field of view.*



Vertical position: Check to see if the region of interest is positioned correctly in the light field. The foot joint must be covered by the light field.



Lateral position: Use positioning aids to position the foot and adjust the table height, if necessary. Ensure that the light field covers the foot.

The products/features (mentioned herein) are not commercially available in all countries. Their future availability cannot be guaranteed.

¹ Option

Multitom Rax Real3D¹

Settings



Study ID 5aad582

Settings for a scan around the table with Standard Protocol

<i>Tube voltage</i>	80.5 kV
<i>Dose area product</i>	404.6 $\mu\text{Gy}\cdot\text{m}^2$
<i>Calculated value for $\text{CTDI}_{\text{vol},32}$</i>	3.1 mGy
<i>Scan time</i>	16 sec
<i>Number of projections</i>	434

Reconstruction settings for sectional views

<i>Pixel size</i>	0.4 mm
<i>Reconstruction kernel</i>	sharp (equivalent to Br69)
<i>Slice thickness</i>	0.5 mm

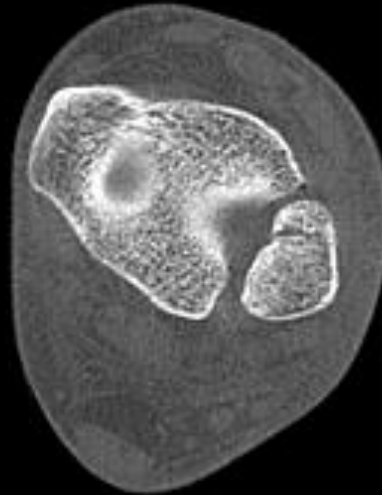
The products/features (mentioned herein) are not commercially available in all countries. Their future availability cannot be guaranteed.

¹ Option

Multitom Rax Real3D¹

Diagnostic findings

Weber B fracture recognizable by the oblique discontinuity of the fibula, which radiates into the ankle joint at the level of the syndesmosis. No relevant misalignment and no dislocation.



Axial view



Coronal view



Sagittal view

Study ID 5aad582

The products/features (mentioned herein) are not commercially available in all countries. Their future availability cannot be guaranteed.

¹ Option



“Especially for preoperative planning, the Multitom Rax offers us a very good opportunity to conduct 3D examinations of the extremities.”¹

Amir Bigdeli, MD
Artemed Hospital, Munich, Germany

¹ The statements by Siemens Healthineers customers described herein are based on results that were achieved in the customer's unique setting. Since there is no “typical” hospital and many variables exist (e.g. hospital size, case mix, level of IT adoption) there can be no guarantee that other customers will achieve the same results.



The products/features (mentioned herein) are not commercially available in all countries. Their future availability cannot be guaranteed.

Results from case studies are not predictive of results in other cases. Results in other cases may vary.

Dr. Amir Bigdeli is employed by an institution that receives financial support from Siemens Healthineers for collaborations.