



# Experience a higher level of patient care in urology

UROSOP Access

Answers for life.

**SIEMENS**

# UROSKOP Access – for truly unrestricted diagnostics and therapy



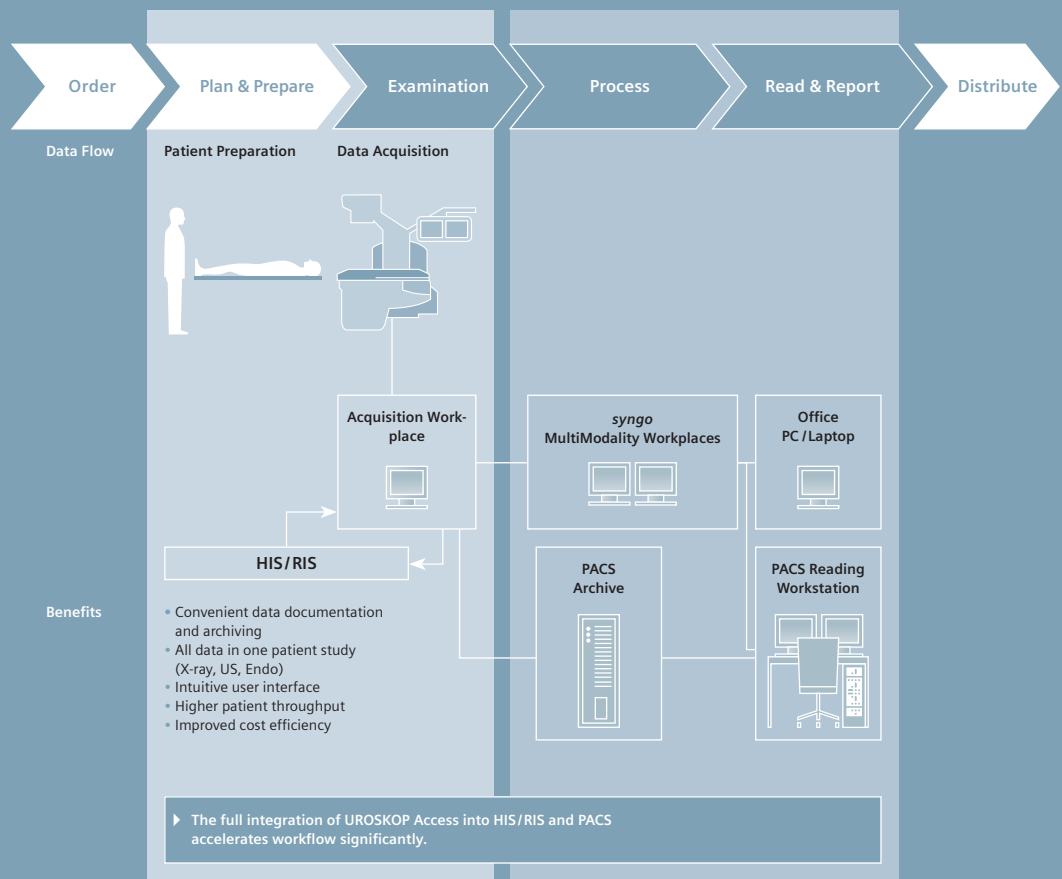


Introduced in 2001. And still one-of-a-kind. Today, UROSKOP® Access remains the only urological system on the market that offers free patient access – from all sides. It lets you experience a new level of clinical workflow. And helps you provide the best possible patient care. With a fully ergonomic design, easy operation, and clear image quality.

What's more, UROSKOP Access enhances your clinical portfolio. As it covers virtually every urological application. Experience how exceptional system performance can play a key role in supporting your diagnostic and therapeutic workflow. Experience UROSKOP Access.

## System highlights

- Free access without compromise
- Most flexible handling for a new level in patient care
- Extremely sharp images at significant dose savings
- Outstanding integration of endoscopy solutions
- Maximum comfort for both patient and physician





SIEMENS  
Uroskop  
Access



“ Thanks to the symmetrical patient access, patient repositioning is no longer necessary, which usually is very difficult and risky. Nearly every urological procedure has become safer and more comfortable for both patient and physician. The OR time can therefore be shortened by up to 30%. ”

**Dr. Francois Boezaart**  
Pretoria Urology Hospital, Pretoria, South Africa

UROSKOP Access

# Experience patient access and comfort without compromise

## A telling name

The name says it all – UROSKOP Access. Built around the idea of providing optimal and unrestricted patient access. Offering you a sense of freedom never experienced before. Whether you stand in front of the table or under the curved X-ray column, the system allows free patient access from every position. A unique feature that only our UROSKOP Access offers. Because it has been designed with your convenience in mind.

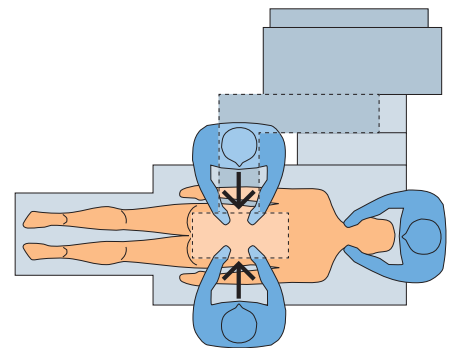
## Only one-time patient positioning

The patient is positioned. You can display the entire urinary tract by simply moving the X-ray tube. Your benefit? Regardless of the type of examination, you need to position the patient only once – no more need for repositioning. Even when performing percutaneous procedures on both kidneys. The anesthetist stays in place, too. Only you have to step to the other side of the table. And by making patient repositioning a thing of the past, the innovative system can also improve patient safety. It's that easy. It's UROSKOP Access.



The unique open design of UROSKOP Access ... optimizes all procedures:

- free patient access from both sides of the table
- no more patient repositioning
- anesthetist remains at head of table

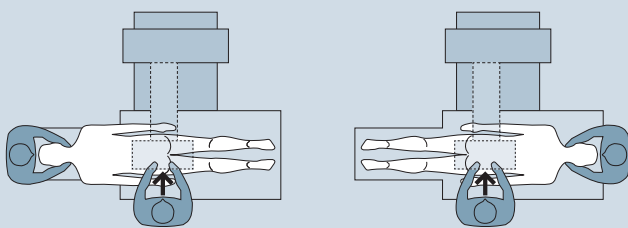


UROSKOP Access – access from both sides



## System highlights

- Unrestricted patient access from all sides
- Increased patient safety
- Valuable time savings



Conventional urodiagnostic tables – limited access

With conventional urodiagnostic tables  
... procedures can be time-consuming:

- patient access is limited to one side
- patient repositioning is necessary
- anesthetist needs to change position

UROSKOP Access

# Benefit from high flexibility and multi-functionality

## Saving time with intelligent movements

With UROSKOP Access, wasted motions are greatly reduced. For example when you perform urodiagnostics from bladder to kidney. Instead of moving the table or the patient, you only move the X-ray tube and image intensifier longitudinally. Comfortably by hand or foot control. You can also work in a constant working height: The table offers an ergonomic Trendelenburg tilt of  $\pm 15^\circ$ . And pivots around the perineal end of the table instead of its center. You see, UROSKOP Access provides features that really pay off. By minimizing your working steps.

## Everything in view wherever you stand

Up. Down. Left. Right. Tilted. The monitor arm of UROSKOP Access is the epitome of flexibility. Simply grab the handle. And you can easily move the high-resolution monitors around. Limitless. In any direction. For a clear, comfortable view of the information you need. Whatever your working position during an examination.

## Making patients feel more comfortable

Who feels at ease sitting on a chair high up? With UROSKOP Access, your patients can keep their feet on the ground. Even when sitting on a micturition seat. Thanks to its low and comfortable sitting height of 50 cm (19.7 inches). The table can be tilted  $\pm 90^\circ$  horizontally and vertically. It also supports a maximum patient weight of up to 272 kg (600 lbs). So you can easily examine and treat even highly obese patients.







## System highlights

- Constant working height
- Longitudinally movable X-ray tube and image intensifier
- Freely positionable TFT color displays
- Easy system operation
- Ergonomic table



Freely movable monitors

# Combine the finest technology with low dose

## Inner values you can count on

Innovative technology, outstanding quality, and high reliability. Siemens is known for these qualities. And this is exactly what we put into our UROSKOP Access. Only our finest components – from a powerful generator (65 or 80 kW) and X-ray tube, a state-of-the-art 40 cm (16 inches) image intensifier to a high-resolution 1K<sup>2</sup> digital imaging chain. For optimal image quality even for obese patients. An almost unlimited field of view. And crystal-clear, high-contrast images.

## We commit to low dose

While always sharpening up image quality, we are also committed to further reducing dose. That is why we started our CARE\* initiative years ago. And we have equipped our UROSKOP Access with all the features of our CARE program. Providing dose savings of up to 70 percent. Benefit from fully automatic calculation and optimization of the exposure data. Pulsed fluoroscopy. Radiation-free positioning of the primary collimators. And special organ programs for children. All that leading to reduced dose for both patient and staff.

## Imaging quality your eyes can trust

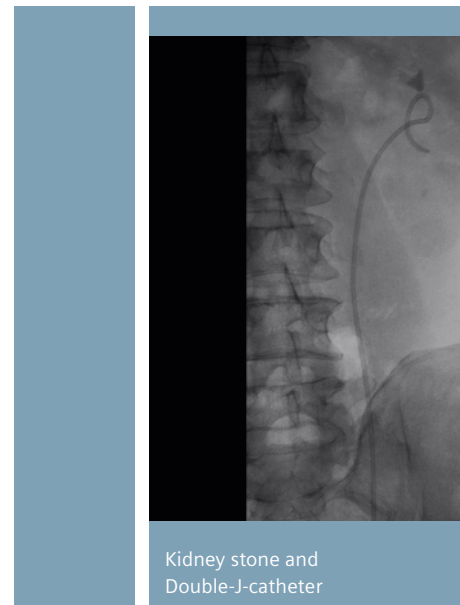
Crisp and clear images. Without blurred edges. Two high-contrast color TFT monitors. Full 48 cm (19 inches) anatomical view. Live fluoroscopic images on one monitor. Archived reference images on the other at the same time. Connecting the appropriate equipment, you can view endoscopic and ultrasound images on the second monitor. And what's more: Both endoscopic and ultrasound images can be stored together with all X-ray images in one patient study. This is how UROSKOP Access presents and handles your clinical images. Simply in an optimal way.

## Interoperability for a smooth flow

Our *syngo* Imaging XS workstation supports you during urological examinations. By making images from other modalities available on the right system monitor or the operating console – such as images from CT, MR or Nuclear Medicine. So you have all the information you need at a glance. Where and whenever you need it. In short: comprehensive multimodality viewing.

## Digital images you can post-process and share

One system. Full workstation functionalities. For comprehensive post-processing of your images directly at the system. Without the need of additional equipment. An intuitive user interface leads you through the post-processing functions – clearly and quickly. In addition, UROSKOP Access offers a local storage capacity of up to 15,000 images. Full DICOM functionality provides for optimal connectivity. So you can easily send, store, retrieve or print all kinds of clinical images directly at the system at any time. For a smooth clinical workflow and a smart PACS integration.



Kidney stone and Double-J-catheter

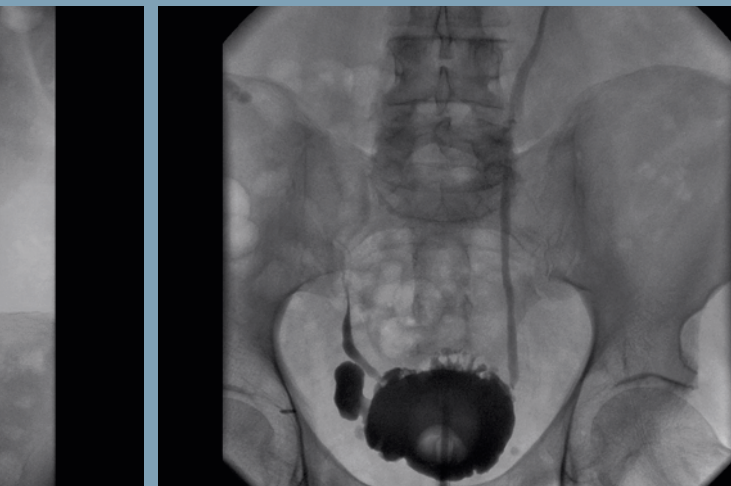
\* Combined Applications to Reduce Exposure (CARE), a Siemens initiative for dose reduction



Percutaneous nephrostomy

## System highlights

- Outstanding image quality
- Dose savings of up to 70%
- Live view and storage of X-ray, endoscopy, and ultrasound images at one system
- Comprehensive workstation functionality



Renal carcinoma



Retrograde pyelography

UROSKOP Access

# A system that answers your needs

## Versatile functionalities for versatile applications

UROSKOP Access has been designed to support you throughout the day. A top-notch system for virtually all urological applications – whether diagnostic or therapeutic. Its open interface allows attaching endoscopic modules or ultrasound systems. So you can easily integrate existing equipment. Moreover, the open system access permits ideal use of laser technology. And your staff can move around freely at any moment of any procedure.

## UROSKOP Access – covers a wide variety of applications

- Radiographic examinations
- Endourological interventions
- Percutaneous interventions
- Laparoscopy
- Urodynamics
- Ultrasound examinations



Radiographic examinations



Endourological interventions



Percutaneous interventions and laparoscopy

“

This system is flexible as well as patient-, surgeon-, and OR-friendly. The bottom line is that better diagnostics allow you to make better treatment decisions. And that translates into lower complication rates and happier patients.

”

**Dr. Steven J. Kurzweil,**  
Geisinger Wyoming Valley Medical Center, Wilkes Barre, PA, USA



Urodynamics

Ultrasound examinations

UROSKOP Access

# An ergonomic design that supports you day by day

## Intuitive controls at your fingertips

Everything you need is right there. Thanks to an intuitive hand-held control. It enables you to control all imaging functions. And to select any system-related operating function during an examination. An ergonomic foot switch for direct and sterile operations is also available. Offering nearly the same commands as the hand-held control. All you have to do is to lightly tap on it. In addition, UROSKOP Access offers a third operating option: You can control all system functions remotely. Without being exposed to radiation.

## Features to ease your daily work

Wouldn't it be great to have some details that support a clearly organized examination room? That is why we have equipped UROSKOP Access with a dedicated shelf at the top of the stand. So you have a storage area for endoscopy components, for example. And won't need an additional endoscopy monitor trolley. Or our tabletop extension. Weighing only 5 kg (11 lbs), it can be easily mounted. Leg supports are gas-spring-assisted and can be clamped anywhere on the rails. And our flexible hygienic drain bag ensures completely free patient access.

Moreover, UROSKOP Access can be cleaned quickly and thoroughly. Even underneath the table. All you have to do is lift the tabletop. As system components are water-tight, the risk of system damage from liquids is reduced. These and more features support you in keeping up a high standard of clinical hygiene.



Storage area



for endoscopic units



Comfortable hand-held control



Multifunctional foot switch







“

I must admit that I enjoy working with UROSKOP Access because it's very compact. I have access from all sides, i. e. a patient in the prone position can be given optimal care regardless of the side. This is especially important for a nephrostomy. Previously, we always had to reposition the patient. UROSKOP Access is great in this respect. There are also other reasons: I can view the ultrasound image in combination with the X-ray image, or for another intervention, the endoscopic image combined with the X-ray image. That makes it quite easy to work.

”

**Prof. Dr. med. J. J. Rassweiler**  
Head of Urology, Klinikum Heilbronn, Heilbronn, Germany

UROSKOP Access

# Smart investment and seamless support

## A partner at your side

With Siemens, systems and services go hand in hand. Whenever you buy a Siemens system, you also benefit from innovative healthcare IT solutions, remote system monitoring or proactive maintenance services – over the entire system life cycle. But that's not all. We also support you. With hand-on trainings, workshops, further education, and much more.

## Siemens customer service

Our extensive customer service includes leasing, financing, user training, and technical support. As a Siemens customer, you will benefit from the sophisticated, reliable, and immediate support of one of the world's most closely knit service networks. With more than 4,500 service engineers worldwide, we provide flexible solutions tailored to your needs – solutions that optimize uptime and productivity as well as your return on investment.

## Customer Care. Life.

**Our goal is your success – over the entire life cycle.**

Performance, productivity, patient satisfaction: You want to get the best results from your investment. With the Life customer care program, we not only take care of your systems but keep your know-how – and that of your employees – up to date. So you can focus on something even more important – your patients.

## Capitalize on a new dimension in system support

Siemens Remote Service (SRS) is the efficient and comprehensive infrastructure for the complete spectrum of medical equipment-related remote services. Services that formerly required onsite visits are now available via data transfer. This includes rapid error identification as well as immediate remote repair. But that's not all. By proactively monitoring your systems, we can detect parameter deviations before problems occur.



**Customer Care. Life.**

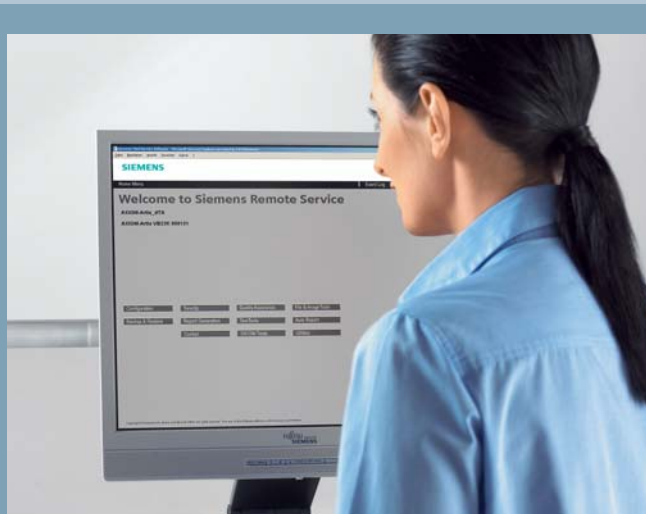
Our goal is your success – over the entire life cycle.

“

When we purchase a medical technology system, service plays a major role in our decision. Naturally, we take a number of factors into account – like technical features, operability, and price. But we only consider systems from suppliers with whom we’ve had good service experience in the past. Every technical device can malfunction at some point. And when it does, we depend on the supplier’s fast and professional support. In those situations, we’ve always been able to count on Siemens.”

**Karl-Heinz Stump**

Head of Medical Technology, Caritas Hospital, Bad Mergentheim, Germany



**Siemens UPTIME Services**  
Solving tomorrow's problems today.

**Siemens Remote Service**  
Capitalize on a new dimension in system support.

The information in this document contains general descriptions of the technical options available and may not always apply in individual cases.

The required features should therefore be specified in each individual case at completion of contract. Siemens reserves the right to modify the design and specifications contained herein without prior notice. Please contact your local Siemens sales representative for the most current information.

Original images always lose a certain amount of detail when reproduced.

In the interest of complying with legal requirements concerning the environmental compatibility of our products (protection of natural resources, waste conservation), we recycle certain components. Using the same extensive quality assurance measures as for new components, we guarantee the quality of these recycled components.

Please find fitting accessories:  
[www.siemens.com/medical-accessories](http://www.siemens.com/medical-accessories)

## Local Contact Information

### In Japan

Siemens-Asahi  
Medical Technologies Ltd.  
Takanawa Park Tower 14F  
3-20-14, Higashi-gotanda  
Shinagawa-ku  
Tokyo 141-8644  
Phone: +81 3 5423 8510

### In Asia

Siemens Pte Ltd  
The Siemens Center  
60 MacPherson Road  
Singapore 348615  
Phone: +65 6490 8182

### In Germany

Siemens AG  
Healthcare Sector  
Karlheinz-Kaske-Str. 2  
91052 Erlangen  
Phone: +49 9131 84-0

### In the USA

Siemens Medical Solutions USA, Inc.  
51 Valley Stream Parkway  
Malvern, PA 19355  
USA  
Phone: +1 610 448 4500

## Global Business Unit

Siemens AG  
Medical Solutions  
Special Systems  
Henkestr. 127  
DE-91052 Erlangen  
Germany  
Phone: +49 9131 84-0

## Global Siemens Headquarters

Siemens AG  
Wittelsbacherplatz 2  
80333 Muenchen  
Germany

## Global Siemens Healthcare Headquarters

Siemens AG  
Healthcare Sector  
Henkestr. 127  
91052 Erlangen  
Germany  
Phone: +49 9131 84-0  
[www.siemens.com/healthcare](http://www.siemens.com/healthcare)

## Legal Manufacturer

Siemens AG  
Wittelsbacherplatz 2  
DE-80333 Muenchen  
Germany

[www.siemens.com/healthcare](http://www.siemens.com/healthcare)