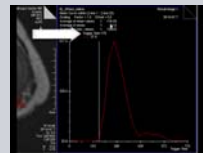
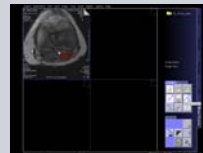
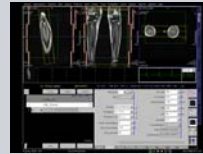
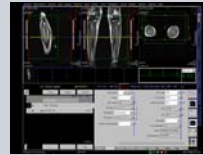


# *syngo* NATIVE: SPACE

1. Run the scout.
2. Open and position TDscout to calculate trigger time of vessels of interest.
3. Ensure accuracy of ECG triggering and apply scan.
4. Open syngo NATIVE SPACE sequence and position of anatomy of interest. Do not apply the scan yet.
5. Load TDscout cine images into the "Mean Curve" program to calculate correct TD time.
6. Draw RoI over vessel of interest and "Start Evaluation".
7. Move the vertical bar to the beginning of the intensity curve and use the Trigger Time as the TD within the sequence.

Apply the scan.



Non-Contrast MR Angiography