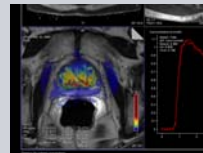
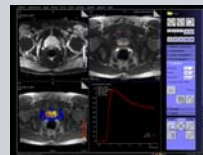
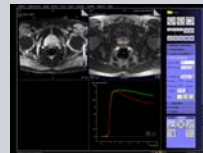


Tissue 4D

1. Open the patient browser and load program data sets into the Tissue4D Task-card. Use the Tissue4D icon after selecting the patient.
2. Select the Registration tab, step 2. Select the Registration Icon. This will automatically align the dynamic data sets to the pre-contrast data set.
3. Select Curve Calculation, Step 3. Select Drawing to and create ROI1 over area of interest. Up to 4 ROI's can be drawn. Select Start Plotting
4. Continue to Pre Evaluation, step 4. Here we select the contrast agent used, and draw the VOI to cover the entire anatomy of interest. Draw the VOI. To do this left click and drag the cursor.
5. Select Evaluation, step 5. Select the AIF modeling. Change selection of evaluation to VOI, and start evaluation.
6. Select the Results tab to generate final results, Step 6. Calculate and show statistics. Maps and results are created for each ROI. Resulting statistics are: kTrans, Kep, Ve and iADC.
7. The results can be exported, step 7.



Measuring contrast agent concentration