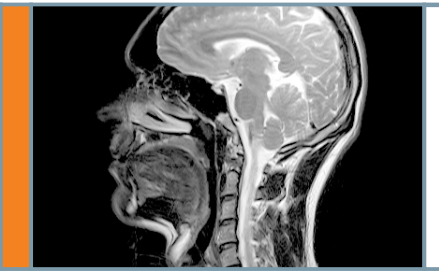


MAGNETOM Avanto

The first Tim system



Performance that exceeds. The MAGNETOM Avanto is based on Tim (Total imaging matrix), the Siemens-unique technology with a radically different Matrix coil design. Truly, one of the world's leading advances in MRI.

Revolutionary acquisition quality:

- Highest image quality for superb MR imaging, revealing a new dimension of morphological details.
- Clinically most relevant images provide highest diagnostic confidence.

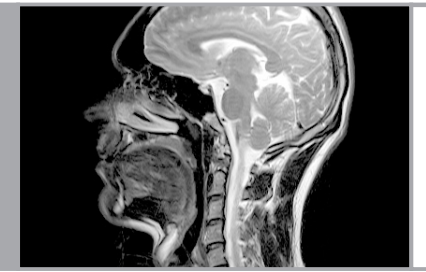
Revolutionary comfort:

- Ultra-light weight coils
For example: The Body Matrix Coil weighs 950 grams only
- Whole-body coverage
No patient or coil repositioning
- AudioComfort - High gradient performance that whispers
Up to 97% noise reduction
- Comfortable, inviting design
Feet first exams for nearly all MR examinations

See for yourself!

MAGNETOM Avanto

The first Tim system



Performance that exceeds. The MAGNETOM Avanto is based on Tim (Total imaging matrix), the Siemens-unique technology with a radically different Matrix coil design. Truly, one of the world's leading advances in MRI.

Revolutionary acquisition quality:

- Highest image quality for superb MR imaging, revealing a new dimension of morphological details.
- Clinically most relevant images provide highest diagnostic confidence.

Revolutionary comfort:

- Ultra-light weight coils
For example: The Body Matrix Coil weighs 950 grams only
- Whole-body coverage
No patient or coil repositioning
- AudioComfort - High gradient performance that whispers
Up to 97% noise reduction
- Comfortable, inviting design
Feet first exams for nearly all MR examinations

See for yourself!