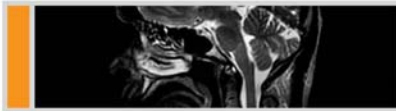


C!_ad2_size1.zip (5 MB)



MAGNETOM C!

Small footprint – giant steps

MAGNETOM C! – the most compact C-shaped magnet with a pole diameter of only 137 cm assures maximum patient comfort. True multi channel imaging allows faster head-to-toe scanning for shorter exam times.

Confidence in diagnosis:

- Optimized components, high-field technology and superior workflow support deliver excellent image quality.

Patient comfort at its best:

- Most open c-shaped magnet
- Head outside in virtually all exams
- 207° accessibility
- Patient-friendly side loading

Discover the changing face of mid-field MRI.



50 x 160 mm (color / b & w)