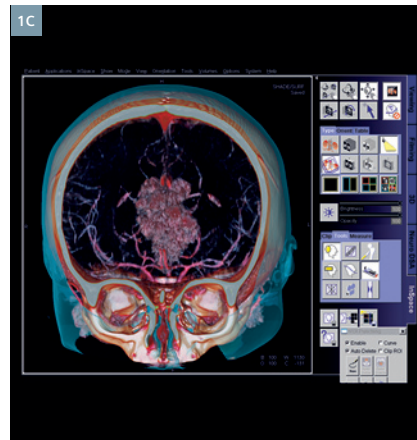
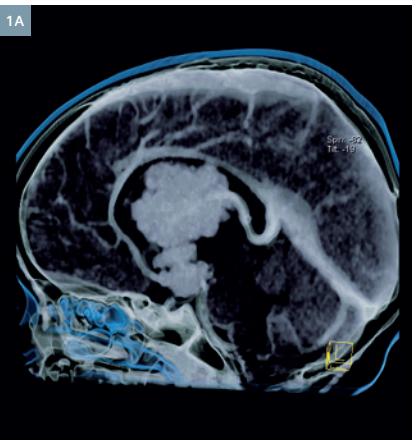


Visualization of a Choroid Plexus Papilloma in an 11-months-old Child

SOMATOM Emotion 16-slice Configuration

www.siemens.com/medical

SIEMENS
medical



Supratentorial hydrocephalus: abnormal masses involving the lateral ventricles – [Fig. 1A] VRT sagittal, [Fig. 1B] MIP axial, and [Fig. 1C] VRT coronal.

Visualization of a Choroid Plexus Papilloma in an 11-months-old Child

By Andrzej Kościeszka, MD,
Piotr Nużyński, MD,
Department of Radiology,
Bogdanowicz Hospital,
Warsaw, Poland



SOMATOM Emotion 16-slice configuration with a wide-open gantry in the children scan room, all painted in a very colorful way so that the small patients are not afraid of examinations.

History

A normally developing infant aged eleven months suffered a minor trauma. Ultrasonographic examination disclosed triventricular hydrocephalus and abnormal hyperechogenic mass in midline partially involving the lateral ventricles and the third ventricle.

Diagnosis

On CT examination, an abnormal mass of highly increased density was seen, involving the lateral ventricles and the third ventricle, associated with supratentorial hydrocephalus. On histological examination, choroid plexus papilloma was found.

Comments

This case demonstrates the usefulness of CT in the assessment of the character and precise location of well vascularized congenital tumours in children. Short acquisition time and secondary reconstructions of outstanding quality using a SOMATOM Emotion 16-slice configuration enable correct diagnosis and precise planning of surgical treatment.

Examination Protocol

Scanner	SOMATOM Emotion 16-slice configuration
Scan area	Head
Scan length	126 mm
Scan time	22 s
kV	130 kV
Effective mAs	240 mAs
Rotation time	1.5 s
Slice collimation	16 x 1.2 mm
Slice width	1.5 mm
Pitch	0.55
Reconstruction increm.	0.6 mm
Kernel	H40s medium

Contrast	
Volume	12 ml
Flow rate	manual
Start delay	manual

On account of certain regional limitations of sales rights and service availability, we cannot guarantee that all products included in this brochure are available through the Siemens sales organization worldwide. Availability and packaging may vary by country and is subject to change without prior notice. Some/All of the features and products described herein may not be available in the United States.

The information in this document contains general technical descriptions of specifications and options as well as standard and optional features which do not always have to be present in individual cases.

Siemens reserves the right to modify the design, packaging, specifications, and options described herein without prior notice. Please contact your local Siemens sales representative for the most current information.

Note: Any technical data contained in this document may vary within defined tolerances. Original images always lose a certain amount of detail when reproduced.

Please find fitting accessories:
www.siemens.com/medical-accessories

© 02.2007, Siemens AG

Contact Address

Siemens AG, Medical Solutions
Computed Tomography
Siemensstr. 1, D-91301 Forchheim
Germany
Telephone: +49 9191 18-0

Siemens AG
Wittelsbacherplatz 2
D-80333 Muenchen
Germany

Headquarters
Siemens AG, Medical Solutions
Henkestr. 127, D-91052 Erlangen
Germany
Telephone: +49 9131 84-0
www.siemens.com/medical