



ACUSON Sequoia™ C512 Echocardiography System

Transducers

www.siemens.com/healthcare

SIEMENS





10V4c Transducer

Frequency Bandwidth:	10 – 4 MHz
Compatible With:	ACUSON Sequoia™ 512 ultrasound system
Applications:	Neonatal and pediatric echocardiography

Features:

- MICROSON™ high resolution transducer
- Vector™ wide-view imaging format phased array
- User-selectable Wideband MultiHertz™ multiple frequency imaging



8V3c Transducer

Frequency Bandwidth:	8 – 3 MHz
Compatible With:	ACUSON Sequoia 512 ultrasound system
Applications:	Pediatric and fetal echocardiography

Features:

- Hanafy lens transducer technology
- Vector imaging format phased array
- User-selectable Wideband MultiHertz imaging



4V1c Transducer

Frequency Bandwidth:	4 – 1 MHz
Compatible With:	ACUSON Sequoia 512 ultrasound system
Applications:	Contrast agent studies, coronary artery imaging, stress echo, transcranial with 12.0 and vascular option, transthoracic adult and pediatric echocardiography

Features:

- Hanafy lens transducer technology
- Vector imaging format phased array
- User-selectable Wideband MultiHertz imaging
- RF shielding

* At the time of publication, the US Food and Drug Administration cleared ultrasound agents only for use in LVO. Check the current regulation for the country in which you are using the system for contrast agent clearance.



4V1 Transducer

Frequency Bandwidth:	4 – 1 MHz
Compatible With:	ACUSON Aspen™ ultrasound system ACUSON Sequoia 512 ultrasound system
Applications:	General and deep abdominal vascular

Features:

- Hanafy lens transducer technology
- Vector imaging format phased array
- User-selectable Wideband MultiHertz imaging
- Excellent penetration

* At the time of publication, the US Food and Drug Administration cleared ultrasound agents only for use in LVO. Check the current regulation for the country in which you are using the system for contrast agent clearance.



6C2 Transducer

Frequency Bandwidth:	6 – 2 MHz
Compatible With:	ACUSON Aspen ultrasound system ACUSON Sequoia 512 ultrasound system
Applications:	Abdominal vascular, fetal heart

Features:

- Curved vector imaging format
- Hanafy lens transducer technology
- Wide view phased array
- User-selectable Wideband MultiHertz imaging

* At the time of publication, the US Food and Drug Administration cleared ultrasound agents only for use in LVO. Check the current regulation for the country in which you are using the system for contrast agent clearance.



4C1 Transducer

Frequency Bandwidth:	4 – 1 MHz
Compatible With:	ACUSON Sequoia 512 ultrasound system ACUSON Aspen ultrasound system
Applications:	Abdominal vascular, fetal heart, technically difficult and typical patients

Features:

- Curved vector imaging format
- Hanafy lens transducer technology
- Wide view phased array
- User-selectable Wideband MultiHertz imaging
- Excellent penetration

* At the time of publication, the US Food and Drug Administration cleared ultrasound agents only for use in LVO. Check the current regulation for the country in which you are using the system for contrast agent clearance.



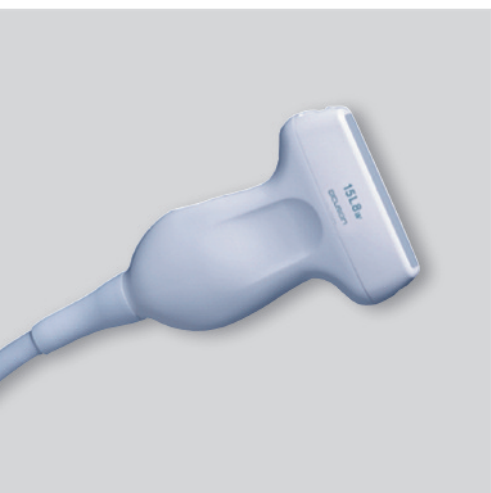
17L5 HD Transducer

Frequency Bandwidth:	17 – 5 MHz
Compatible With:	ACUSON Sequoia 512 ultrasound system
Applications:	Contrast agent imaging, superficial vascular

Features:

- Hanafy lens transducer technology
- Patented ergonomic design with Elastogrip™ ergonomic grip coating
- Linear and Vector wide-view imaging format
- User-selectable Wideband MultiHertz imaging

* At the time of publication, the US Food and Drug Administration cleared ultrasound agents only for use in LVO. Check the current regulation for the country in which you are using the system for contrast agent clearance.



15L8w Transducer

Frequency Bandwidth:	15 – 8 MHz
Compatible With:	ACUSON Sequoia 512 ultrasound system
Applications:	Superficial vascular

Features:

- MICROSON imaging
- Hanafy lens transducer technology
- User-selectable Wideband MultiHertz imaging
- Extra long cable

* At the time of publication, the US Food and Drug Administration cleared ultrasound agents only for use in LVO. Check the current regulation for the country in which you are using the system for contrast agent clearance.



9L4 Transducer

Frequency Bandwidth:	9 – 4 MHz
Compatible With:	ACUSON Sequoia 512 ultrasound system
Applications:	Cerebrovascular, contrast agent imaging, peripheral vascular, superficial vascular

Features:

- 1.25 Multi-D array
- Multi-D™ matrix array transducer technology
- Linear and Vector wide-view imaging format
- Triplex imaging
- User-selectable Wideband MultiHertz imaging

* At the time of publication, the US Food and Drug Administration cleared ultrasound agents only for use in LVO.
Check the current regulation for the country in which you are using the system for contrast agent clearance.



8L5 Transducer

Frequency Bandwidth:	8 – 5 MHz
Compatible With:	ACUSON Sequoia 512 ultrasound system ACUSON Sequoia C256 echocardiography system
Applications:	Extracranial vascular, medium depth arterial and venous studies, peripheral vascular

Features:

- User-selectable Wideband MultiHertz imaging



6L3 Transducer

Frequency Bandwidth:	6 – 3 MHz
Compatible With:	ACUSON Sequoia C256 echocardiography system ACUSON Sequoia 512 ultrasound system
Applications:	Extracranial vascular, medium and deep arterial and venous studies, peripheral vascular

Features:

- User-selectable Wideband MultiHertz imaging



V7M Transducer

Frequency Bandwidth:	8 – 3 MHz
Compatible With:	ACUSON Sequoia C256 echocardiography system ACUSON Sequoia 512 ultrasound system
Applications:	Pediatric and adult transesophageal mini-multiplane echocardiography

Features:

- Endoscope dimensions: diameter = 7.0, length = 70 cm, patient weight = 3.5 kgs and above
- Small tip size for increased patient comfort: width = 10.9 mm, thickness = 8.0 mm, circumference = 22 mm
- Ergonomic design featuring one-hand control
- Manual rotation: -10° – 190°
- Vector imaging format phased array
- User-selectable Wideband MultiHertz imaging
- DTI™ Doppler tissue imaging capability



V5Ms Transducer

Frequency Bandwidth:	7 – 3 MHz
Compatible With:	ACUSON Sequoia C256 echocardiography system ACUSON CV70™ cardiovascular system ACUSON Cypress™ cardiovascular system ACUSON Aspen ultrasound system ACUSON 128XP/10C™ echocardiography system ACUSON Sequoia 512 ultrasound system
Applications:	Transesophageal multiplane echocardiography

Features:

- Endoscope diameter = 10.5, length = 110 cm
- Adult tip size: width = 14.5, height = 11.5
- Ergonomic design featuring one-hand control with variable speed rotation – 90° per sec.
- RF shielding
- Vector imaging format phased array
- User-selectable Wideband MultiHertz imaging
- DTI capability
- *syngo*® *fourSight*™ TEE view
- *syngo*® Mitral Valve Assessment (MVA)



AcuNav 8F*

Frequency Bandwidth:	2.0 – 10.0 MHz
Compatible With:	ACUSON Sequoia C256 echocardiography system ACUSON CV70 cardiovascular system ACUSON Cypress cardiovascular system ACUSON Sequoia 512 ultrasound system
Applications:	Adult intracardiac echocardiography

Features:

- 8 french catheter (2.7 mm diameter)
- 110 cm insertable length
- Sterile, single-use advanced miniaturization AcuNav ultrasound catheter family
- Reusable SwiftLink™ catheter connector
- Four-way steering in two planes: 160° in each direction
- Logitudinal side-fire imaging
- Vector imaging format phased array
- DTI capability

* For purchase or inquiries, contact Biosense Webster: USA (909-839-8500 and 800-729-9010), Belgium (32-2-352-1411), Asia Pacific (65) 6827-6100



Aux CW

Frequency Bandwidth:	2.0 MHz
Compatible With:	ACUSON Sequoia C256 echocardiography platform ACUSON Aspen echocardiography platform ACUSON Aspen ultrasound platform ACUSON Sequoia 512 ultrasound system
Applications:	Non-imaging, transthoracic adult and pediatric, continuous wave spectral Doppler echocardiography

Features:

- Continuous wave spectral Doppler mode
- Excellent intercostal, suprasternal and subcostal access
- Excellent penetration

Specifications subject to change
without notice.

128XP/10C, ACUSON, AcuNav, Aspen, CV70,
Cypress, DTI, Elastogrip, *four*Sight, MICROSON,
Multi-D, MultiHertz, Native, Sequoia, SwiftLink
and Vector are trademarks of Siemens Medical
Solutions USA, Inc. and *syngo* is a trademark of
Siemens AG

Local Contact Information
Siemens Medical Solutions USA, Inc.
51 Valley Stream Parkway
Malvern, PA 19355-1406 USA
Telephone: +1-888-826-9702
www.usa.siemens.com/healthcare

Europe: + 49 9131 84-0
Asia Pacific: + 65 6490 6000

Global Business Unit Address
Siemens Medical Solutions USA, Inc.
Ultrasound
1230 Shorebird Way
Mountain View, CA 94043 USA
Telephone: +1-888-826-9702
www.siemens.com/healthcare

Global Siemens Headquarters
Siemens AG
Wittelsbacherplatz 2
80333 Munich
Germany

Global Siemens
Healthcare Headquarters
Global Siemens AG
Healthcare Sector
Henkestrasse 127
91052 Erlangen
Germany
Telephone: + 49 9131 84-0
www.siemens.com/healthcare

Legal Manufacturer
Siemens Medical Solutions USA, Inc.
Ultrasound
1230 Shorebird Way
Mountain View, CA 94043 USA
Telephone: +1-888-826-9702
www.siemens.com/healthcare