

SIEMENS



Leading.  
With  
MAGNETOM.

[www.siemens.com/mr-combisuite](http://www.siemens.com/mr-combisuite)

# MAGNETOM Artis Combi Suite

Combining MRI intelligence and therapeutic expertise

Answers for life.

# Combining MRI intelligence and therapeutic expertise

## Introducing MAGNETOM Artis Combi Suite

MAGNETOM® Artis Combi Suite brings the MRI intelligence of MAGNETOM Aera 1.5T and MAGNETOM Skyra 3T systems to your interventional procedures.

Top-of-the-line MR imaging and optimized clinical workflows put you at the leading edge – giving you more detail and supporting procedures such as atrial fibrillation ablation. The enabler of this Combi Suite, the Combi Dockable Table, smoothly transfers your patient to and from the MRI system.

### Your benefits:

#### A new level of confidence

- MRI offers excellent image information without radiation dose

- Our mature and robust MRI solutions support your therapeutic decisions at every step

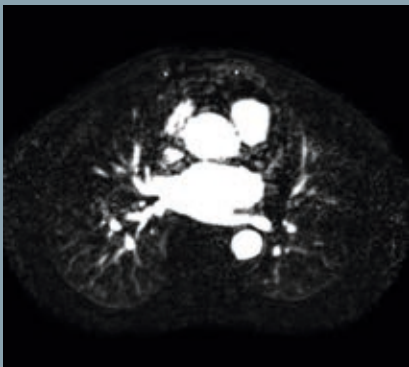
#### Adding value to your practice

- Broaden your clinical scope
- Expand your business with new opportunities

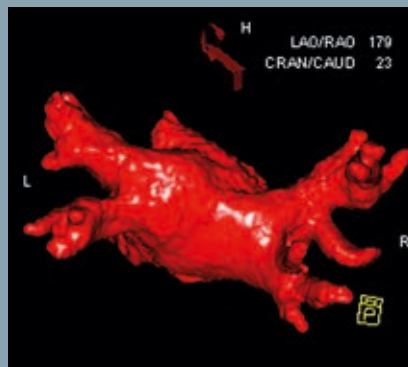
#### Sharpening your edge

- Take bold steps in therapy with high precision
- Siemens and its partners create novel solutions for therapy delivery and science
- Stay at the leading edge by teaming with Siemens

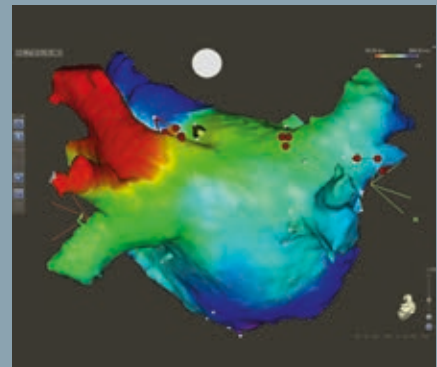
Excellent soft tissue contrast, high spatial and temporal resolution as well as 3D and 4D data acquisition make MRI ideal for cardiac interventions.



MR angiography before ablation procedure. Venous accesses & diameters can be easily identified.



Segmentation of left atrium, based on MR angiography images.



Planning of atrial fibrillation ablation based on segmentation of the left atrium.

# Imaging excellence

with MAGNETOM Aera and MAGNETOM Skyra

What MAGNETOM Aera and MAGNETOM Skyra bring to your suite:

The groundbreaking integration of Tim® (Total imaging matrix) 4G and Dot® (Day optimizing throughput), giving you fast and exceptionally detailed insights before, during, and after interventions. Tim 4G gives you the power you need for excellent image quality. And Dot helps speed up your neuro- and cardiovascular workflow and take the complexity out of MRI.

- Greater patient access and comfort with 70 cm Open Bore
- Ultra-light and short systems – easy siting
- Full application range coverage is standard with comprehensive advanced application options

## **MAGNETOM Skyra 3T – Transforming 3T productivity.**

The top-of-the-line system MAGNETOM Skyra is the 3T choice for MRI-guided therapy.



## **MAGNETOM Aera 1.5T – Transforming 1.5T economics.**

The top-of-the-line system MAGNETOM Aera is the 1.5T choice for MRI-guided therapy.



# Combine

**MAGNETOM Artis Combi Suite  
for interventional imaging –  
robust transfer and smooth workflow**

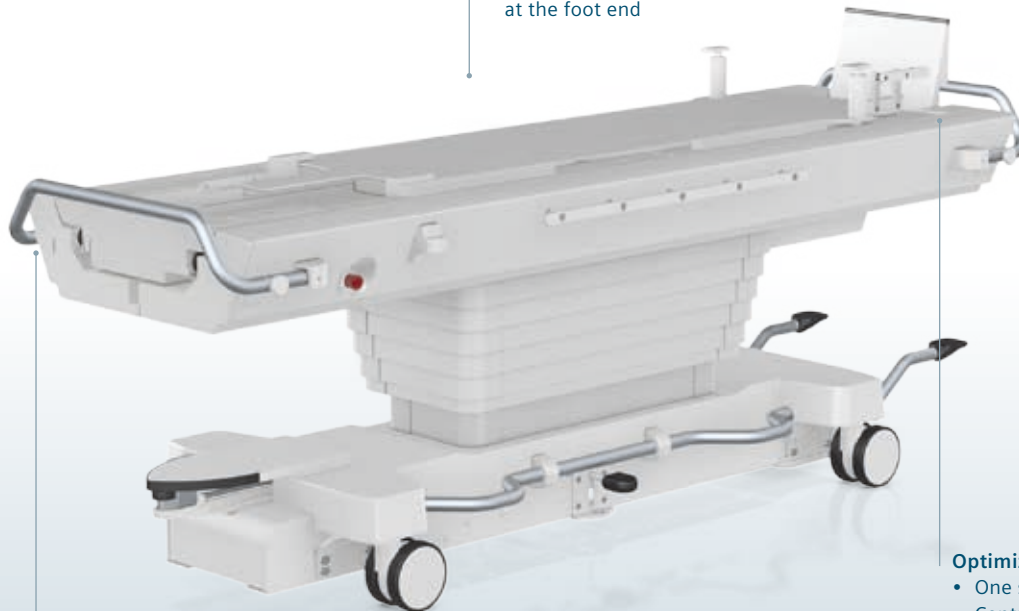
Connecting the  
Combi Dockable  
Table to the  
Artis family  
system

# Optimized workflow

with the Combi Dockable Table

## Imaging excellence

- Compatible with MAGNETOM Aera 1.5T and MAGNETOM Skyra 3T
- One anterior 18 element body matrix coil
- Two posterior 18 element body matrix coils
- Four Tim 4G SlideConnect Coil Connectors at the head end
- One Tim 4G SlideConnect Coil Connectors at the foot end



## Centered on therapy

- Choice of Artis family systems
- Two standard OR side rails
- Robust and easy to clean
- Up to 2 liters water resistant

## Optimized workflow

- One single patient transfer
- Central break for all wheels and 5th wheel for enhanced maneuverability
- Folding handles on both sides
- Supports self-aligning floor dock for transfer and self-aligning dock at the MR
- Emergency evacuation with plugged coils



One single transfer onto the Combi Dockable Table



# Centered on therapy

with Artis imaging systems

The Artis family is specifically designed to meet the increasing demands of interventional imaging – today and in the future. Designed to keep you on the cutting edge of technology, Artis puts enhanced imaging capabilities at your fingertips.

Transferring your patient between Artis and MAGNETOM Aera or MAGNETOM Skyra is robust and efficient directly with the Combi Dockable Table.

## What Artis brings to your suite:

- **Imaging Excellence**  
Its innovative new imaging chain offers unprecedented image quality, so you can make better clinical decisions.
- **Enhanced Workflow**  
Its workflow enhancements help your clinical team function more efficiently.
- **Investment Confidence**  
It's an investment you can make with confidence, backed by the industry's most comprehensive customer care program.
- The Artis system family – adapted to your individual needs by providing the most comprehensive and flexible system portfolio.



Artis zee floor-mounted system



Artis Q ceiling-mounted system



Artis Q.zen biplane system



Artis zeego multi-axis system



Connecting the  
Combi Dockable  
Table with the  
MAGNETOM  
system



# Your intelligent combination

MAGNETOM Artis Combi Suite – where top-of-the-line MRI systems meet the Artis family

## Centered on interventional imaging demands

With the innovative MAGNETOM Artis Combi Suite, Siemens, the market leader in multimodality suites, has created a dedicated solution to integrate MRI into therapeutic procedures – designed with your interventional imaging requirements in mind.

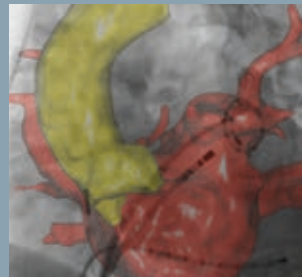
## Optimized workflows

MAGNETOM Artis Combi Suite seamlessly integrates MRI into your therapeutic processes – with smooth patient transfers to and from the MRI system. Intelligent MR imaging information enables more confident decisions – before, during, and after interventions.

## Imaging excellence for state-of-the-art treatment

When you combine your therapeutic expertise with Siemens' MRI systems, you benefit from excellent soft-tissue contrast and differentiation, plus MRI-exclusive imaging techniques, providing valuable morphological and functional information.

Scanning the patient



Overlay of MR segmentation and fluoroscopy image\*





**Two-room siting scenario** ➤ With some of the smallest footprints on the market, MAGNETOM Aera and MAGNETOM Skyra are easy to site, allowing you to easily integrate MRI into your setting.

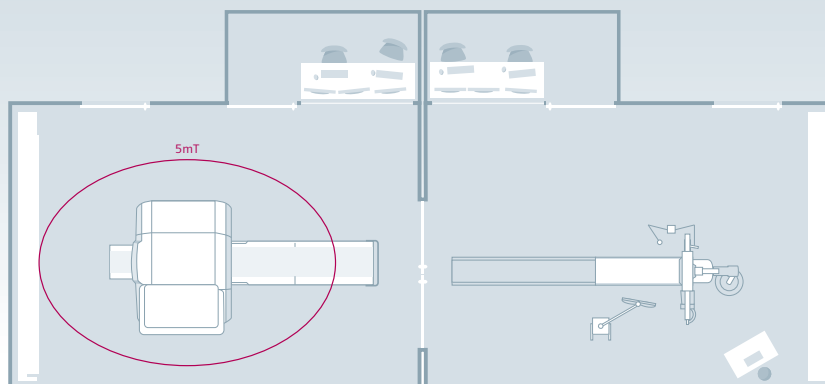


Image above shows 2 room siting example with MAGNETOM Skyra 3T without rail system

**Smooth and sterile** ➤ The patient can be easily transferred in either direction on the Combi Dockable Table, lying on the transfer board. Patient repositioning is a thing of the past.

Not for distribution in the U.S.

On account of certain regional limitations of sales rights and service availability, we cannot guarantee that all products included in this brochure are available through the Siemens sales organization worldwide. Availability and packaging may vary by country and are subject to change without prior notice. Some/All of the features and products described herein may not be available in the United States.

All devices listed herein may not be licensed according to Canadian Medical Devices Regulations. The information in this document contains general technical descriptions of specifications and options as well as standard and optional features which do not always have to be present in individual cases.

Siemens reserves the right to modify the design, packaging, specifications, and options described herein without prior notice. Please contact your local Siemens sales representative for the most current information.

Note: Any technical data contained in this document may vary within defined tolerances. Original images always lose a certain amount of detail when reproduced

Please find fitting accessories:  
[www.siemens.com/medical-accessories](http://www.siemens.com/medical-accessories)

#### **Global Business Unit**

Siemens AG  
Healthcare Sector  
Magnetic Resonance  
Henkestr. 127  
91052 Erlangen  
Germany  
Phone: +49 9131 84-0

Siemens AG  
Medical Solutions  
Angiography & Interventional  
X-ray Systems  
Siemensstrasse 1  
DE-91301 Forchheim  
Germany  
Phone +49 9191 18-0  
[www.siemens.com/healthcare](http://www.siemens.com/healthcare)

#### **Local Contact Information**

##### **In the USA**

Siemens Medical Solutions USA, Inc.  
51 Valley Stream Parkway  
Malvern, PA 19355  
Phone: +1 888-826-9702  
Phone: +1 610-448-4500  
Fax: +1 610-448-2254

##### **In China**

Siemens Medical Park, Shanghai  
278, Zhouzhu Road  
SIMZ, Nanhui District  
Shanghai, 201318, P.R. China  
Phone: +86-21-38895000  
Fax: +86-10-28895001

##### **In Japan**

Siemens Japan K.K.  
Gate City Osaki West Tower  
1-11-1 Osaki,  
Shinagawa-ku  
Tokyo 141-8644  
Phone: +81 3 5423 8411

##### **In Asia**

Siemens Pte Ltd  
Healthcare Sector  
Regional Headquarters  
The Siemens Center  
60 MacPherson Road,  
Singapore 348615  
Phone: +65 6490-6000  
Fax: +65 6490-6001

#### **Global Siemens Headquarters**

Siemens AG  
Wittelsbacherplatz 2  
80333 Muenchen  
Germany

#### **Global Siemens Healthcare Headquarters**

Siemens AG  
Healthcare Sector  
Henkestrasse 127  
91052 Erlangen  
Germany  
Phone: +49 9131 84-0  
[www.siemens.com/healthcare](http://www.siemens.com/healthcare)

#### **Legal Manufacturer**

Siemens AG  
Wittelsbacherplatz 2  
DE-80333 Muenchen  
Germany