

SIEMENS



www.siemens.com/skyra

MAGNETOM Skyra

Answers for life.

Uncover what lies behind Siemens'
leading MRI technology.





MAGNETOM Skyra
Maximize 3T. Every case. Every day.



Tim Technology

Deliver exceptional image quality and speed in MRI



DotGO Workflow

Go for consistent results, efficiently



Trendsetting Applications

Expand your MRI services

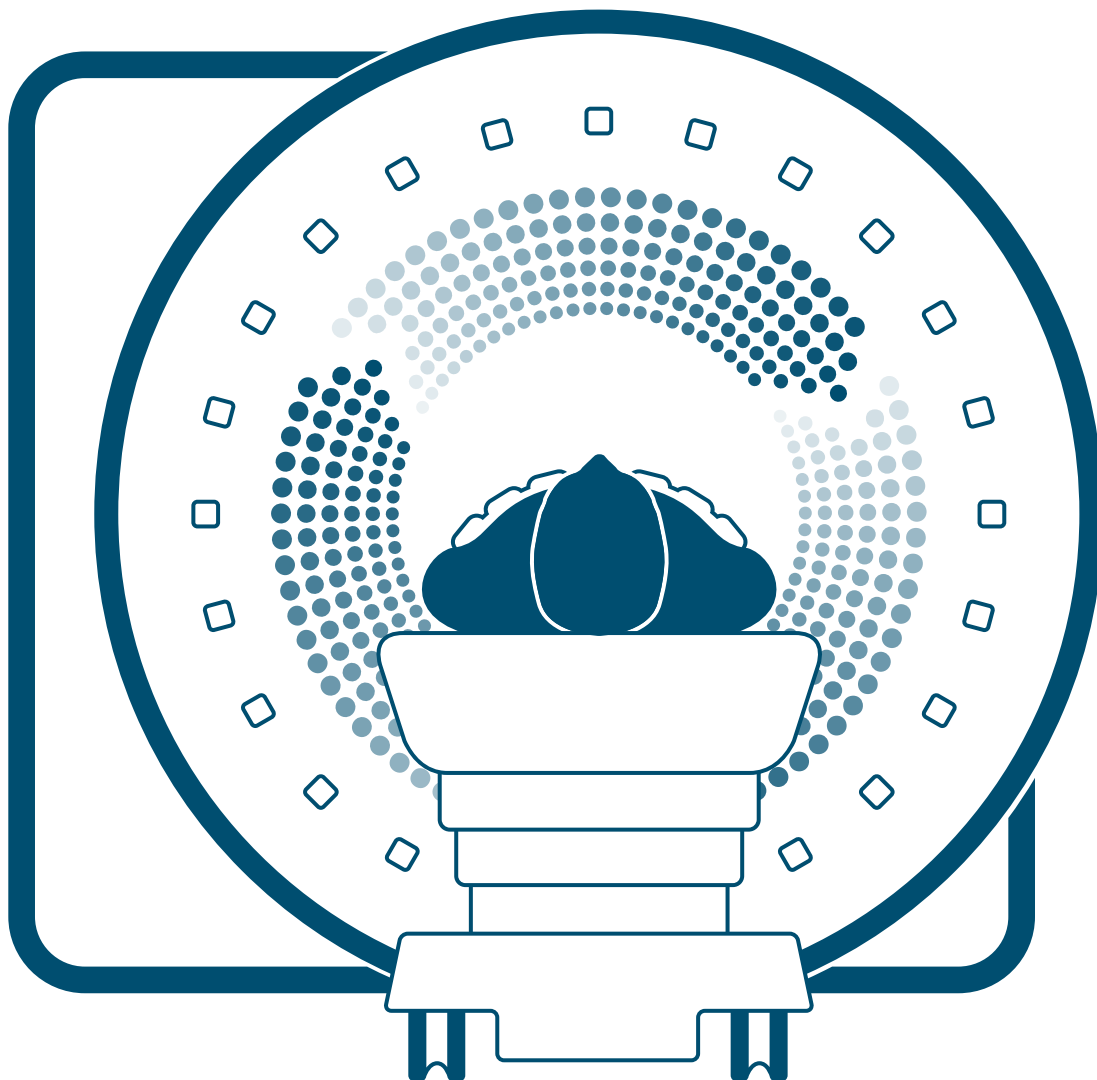


Life Design

Maximize patient friendliness and investment protection

The DNA of Siemens MRI

An intensifying demographic shift, the rise of chronic diseases, patients turning into consumers, the pace of innovation, and a broader access to medical imaging across the globe lead to a constantly growing number of examinations, including MRI. At the same time this development raises central questions for you as healthcare- and us as



equipment-provider alike: How to manage volume growth with limited resources? How to control costs without compromising quality of care? How to expand services in either established or growing markets? How to continuously strive for clinical excellence in the interest of patients despite economic restraints?

Siemens MR provides answers to these questions by offering a unique combination of MRI technology, software and clinical applications, supporting you in turning these challenges into opportunities.

MAGNETOM Skyra

Maximize 3T. Every case. Every day.

Across clinical fields, demand is growing for faster, more accurate, and more patient friendly MRI. 3T technology provides an answer. MAGNETOM Skyra maximizes the potential of 3T, taking MRI to the next level. Leveraging the very latest Siemens innovations, this scanner delivers impeccable image quality – while increasing productivity by up to 50%¹. So you can not only extend care to greater numbers of patients, you can radically improve your return on investment, too.

Whether used for routine examinations or advanced research, MAGNETOM Skyra will revolutionize the way you work.

Contents

MAGNETOM Skyra at a glance	06
Deliver exceptional quality and speed in 3T MRI	08
with Tim 4G coil technology	10
Go for consistent results, efficiently	20
with DotGO workflow	22
Expand your MRI services	28
with Trendsetting Applications	30
with Life Design	38
Service and exchange	42
Technical specifications	48

MAGNETOM Skyra at a glance

Maximize 3T. Every case. Every day.

Up to **40%**
faster MRI exams⁴

- Rapid image acquisition with Tim 4G coil technology
- Higher throughput
- Simplified exam set-up

Less than
1 minute
exam-time variation⁸

- Routine tasks automated with DotGO workflow
- Time savings for technicians
- Greater patient focus

**Grow your MRI
services with
Body MRI**

- Free-breathing, contrast-enhanced body imaging
- Always the right contrast in dynamic liver evaluation
- Non-invasive liver evaluation





Up to **97%**
reduction in sound
pressure²

- Complete, quiet neurological and orthopedic examinations
- More patient acceptance, fewer rescans
- No impact on image quality

70cm
open bore

- Large variety of patient sizes accommodated
- Maximum patient comfort
- Ideal for anxious patients

**Minimized
lifecycle costs**

- Fast and easy installation
- Low operating costs
- Energy efficient
- Small system footprint, low power, cooling and helium costs



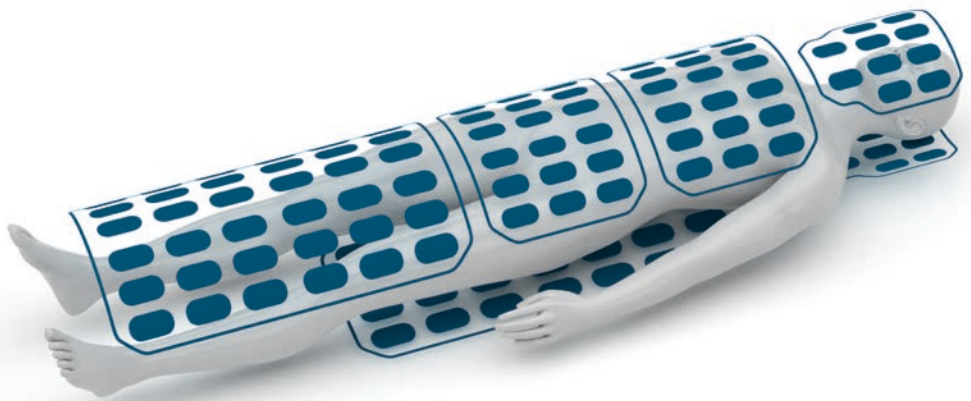
Deliver exceptional quality and speed in 3T MRI

Reducing set-up times, simplifying coil handling, minimizing the need for rescans: all top priorities for radiology teams. And MAGNETOM Skyra delivers on all counts, boosting process efficiency with Tim 4G – the latest generation of Siemens' integrated coil technology. Tim 4G delivers the impeccable image quality and rapid acquisition you expect from a 3T system. For increased accuracy, flexibility and speed.

Deliver exceptional quality and speed in 3T MRI

with Tim 4G coil technology

Up to **44%**
more SNR per exam^{2,5}



Up to **40%**
faster MRI exams⁴

Flexibility

With Tim 4G integrated coil technology, MAGNETOM Skyra takes flexibility in MRI to a whole new level. Up to 204 coil elements and up to 128 RF channels enable efficient scanning with no coil or patient repositioning. And there's no need to limit yourself to a particular region of interest: Tim 4G provides support for large anatomical areas and even whole-body coverage.

“TrueForm Design enables the examination of body regions at 3T that were previously limited, for example examinations of the abdomen and the pelvis, as well as whole-body examinations.”⁶

Markus Lentschig, MR and PET/CT Imaging Center
Bremen Mitte, Germany

Up to **204**
coil elements

Up to **128**
RF channels

Accuracy

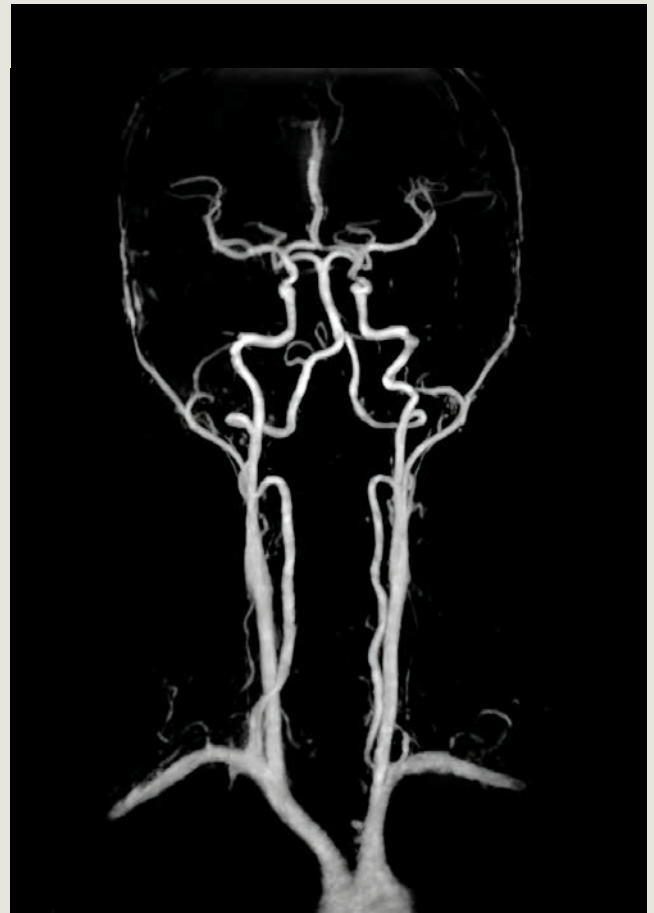
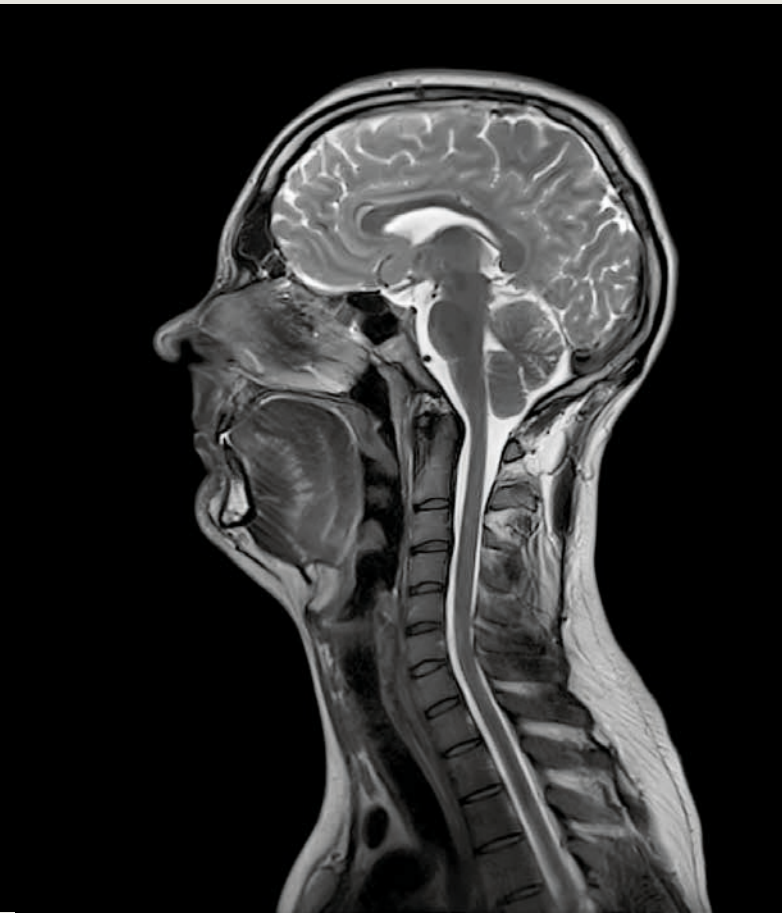
Exceptional signal-to-noise ratio (SNR) paves the way for superior image quality and supports a high level of accuracy in diagnostic exams. In addition, Tim 4G's all digital-in/digital-out Direct RF design enables true signal purity. Coupled with an intelligent workflow, these features help you respond with greater certainty to challenging clinical scenarios.

Speed

Tim 4G's DirectConnect and SlideConnect coils slot into place quickly and easily for faster scan set-up. In addition, the Tim Dockable Table allows you to prepare immobile patients in advance, saving valuable time. And advanced simultaneous parallel acquisition helps you dramatically shorten exams, boosting speed and efficiency in MRI.



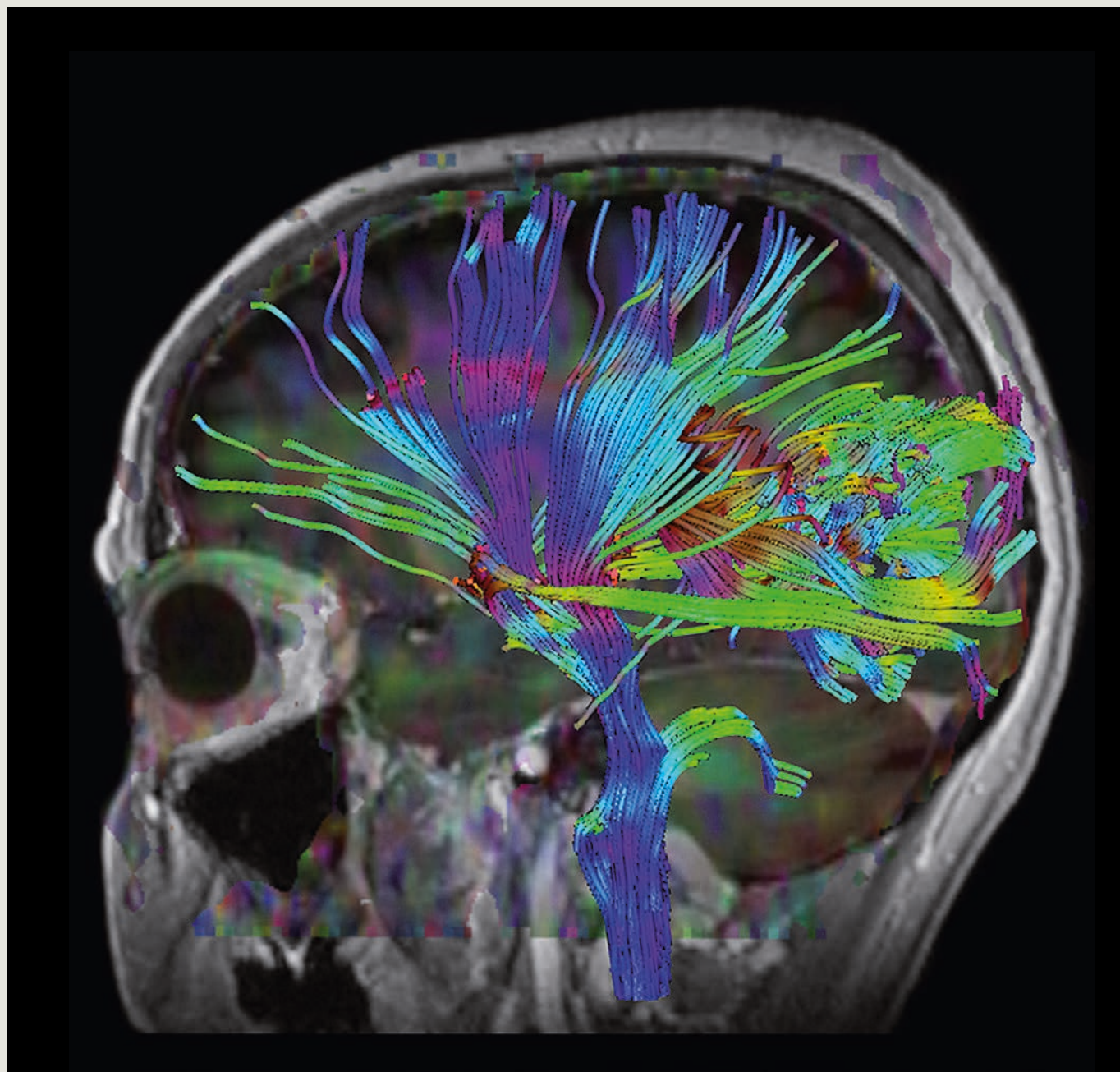
WHOLE BODY: Superior-quality imaging from meters to microns. Cover the entire body up to 205 cm, with enough resolution to see small details.



HEAD/NECK: With excellent SNR, the Head/Neck 64 coil reveals previously hard-to-recognize details in the brain, inner ear, orbits, skull base, neck and spinal cord – improving insights in neuroanatomy while improving scan time and resolution.

*"The Head/Neck 64 reveals previously hard-to-recognize, but pertinent anatomical and disease-related details for a spectrum of pathologies within the brain, inner ear, orbits, skull base and neck, as well as the cervical spinal cord. This leads to improved insight into neuroanatomy relevant to an extended range of diseases. All this can be achieved, fortunately, at advanced speed and resolution."*⁶

Prof. Bernhard Schuknecht, MD
Diagnostic, Vascular and Interventional Neuroradiology
MRI-Medical Radiological Institutes Zurich, Switzerland



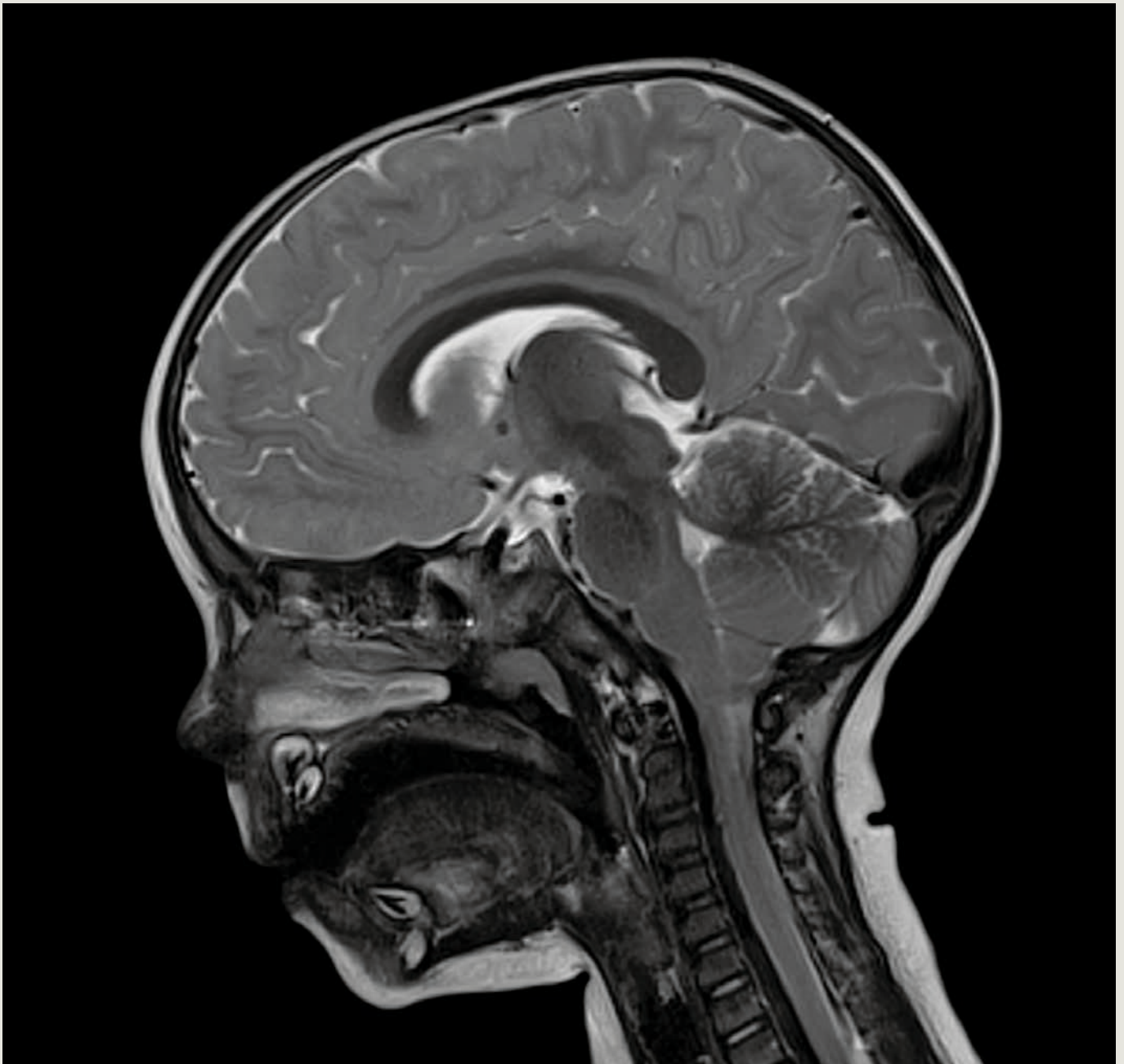
NEUROLOGY: Tim 4G delivers benefits in neuroscience in both research and clinical routine – thanks to increased SNR and a new architecture⁵.

MRI-Medical Radiological Institutes, Zurich, Switzerland



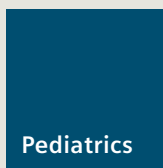
Neurology

www.siemens.com/neuro-mri

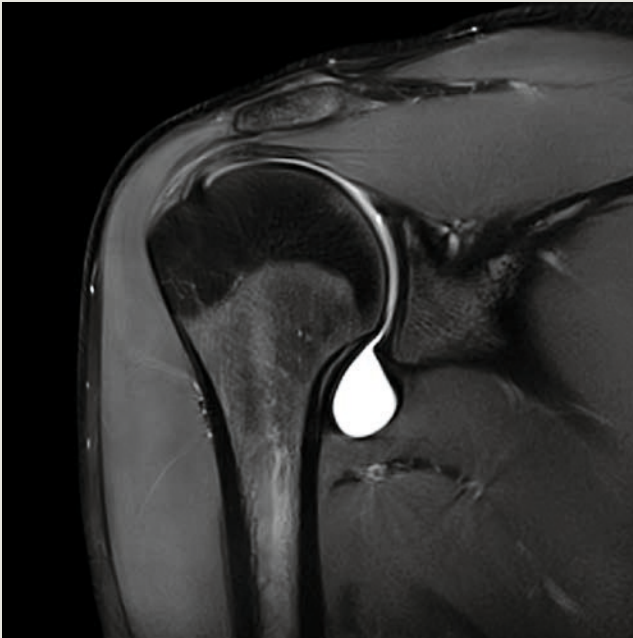


PEDIATRICS: Ultra-high density, light-weight Tim 4G coils enable faster examinations, helping reduce anxiety and rescans in pediatrics.⁷

University Hospital KISPI Beider UKB, Basel, Switzerland

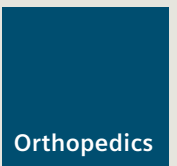


www.siemens.com/pediatric-mri



ORTHOPEDICS: Tim 4G's ultra high-density coils for MSK imaging maximize SNR and anatomic coverage.

Top left: Radiologisches Zentrum Muenchen-Pasing, Munich, Germany



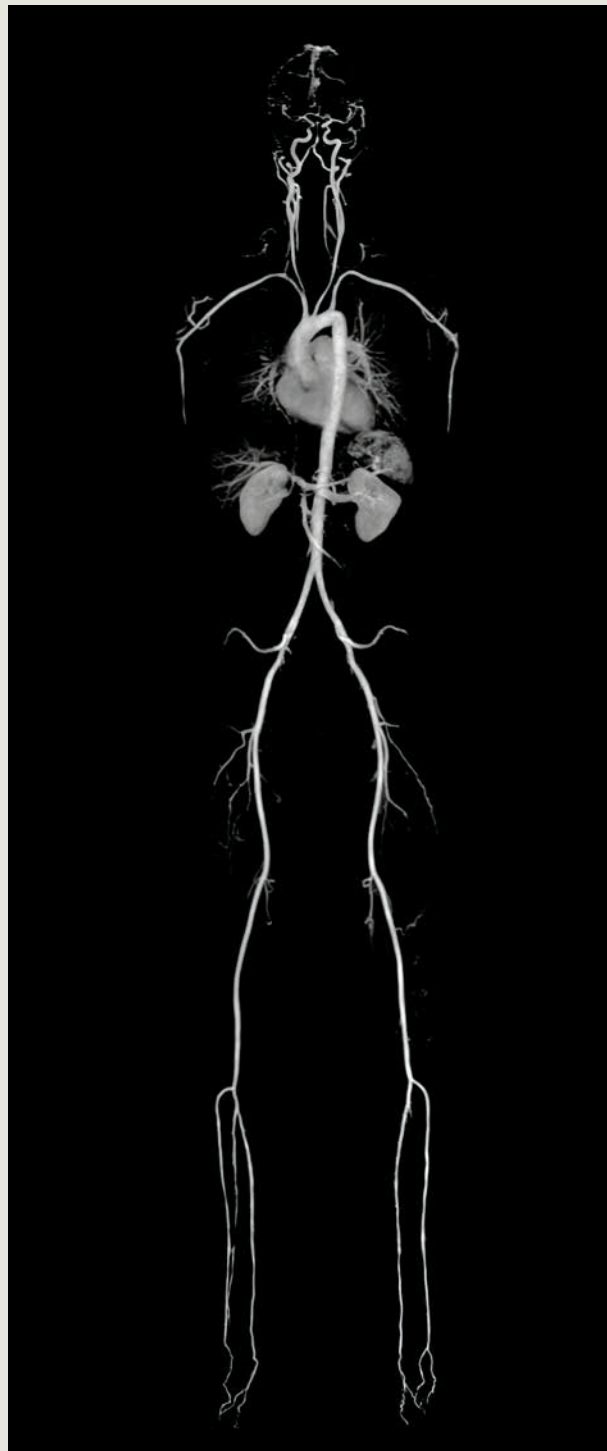
www.siemens.com/msk-mri

“Every day, we experience progress in diagnostics achieved with MAGNETOM Skyra. It’s a pleasure to work with this system. MAGNETOM Skyra is robust, efficient and reliable.”⁶

Christoph Tillmanns, Cardiologist,
Head of Cardiology, Diagnostikum Berlin, Berlin, Germany

ANGIOGRAPHY: Tim 4G’s new ultra high-density coils and 205 cm scan range allow you to perform high-resolution whole-body angiography easily and without repositioning the patient. And, with DotGO’s on-board guidance, you can move through the scan with ease.

Imaging Science Institute Charité, Berlin, Germany





BODY: Tim 4G offers high-channel body imaging thanks to the combination of the ultra-high density body and spine coils. Moreover, our Trendsetting Applications help you expand your service lines in MRI.

University Hospital IKRN, Mannheim, Germany

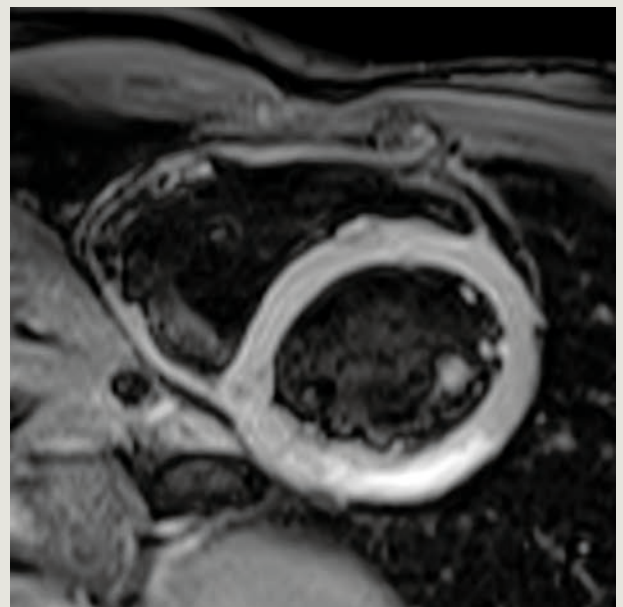


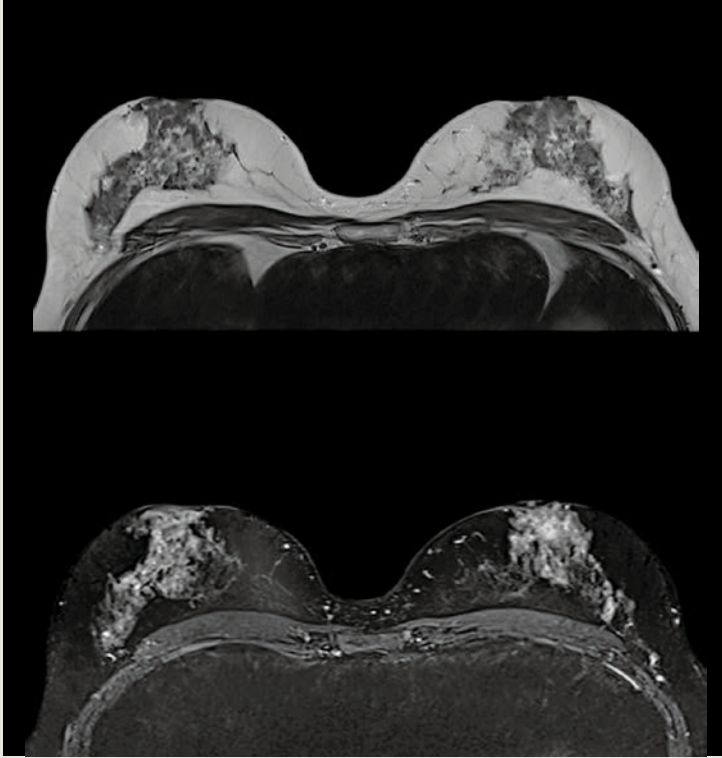
Cardiology

www.siemens.com/CMR

CARDIOLOGY: Cardiac examinations benefit from high SNR and increased parallel imaging factors in any direction to achieve ultra-fast acquisition times, from morphology to function and to viability.

Diagnostikum Berlin, Berlin, Germany





Breast
MRI

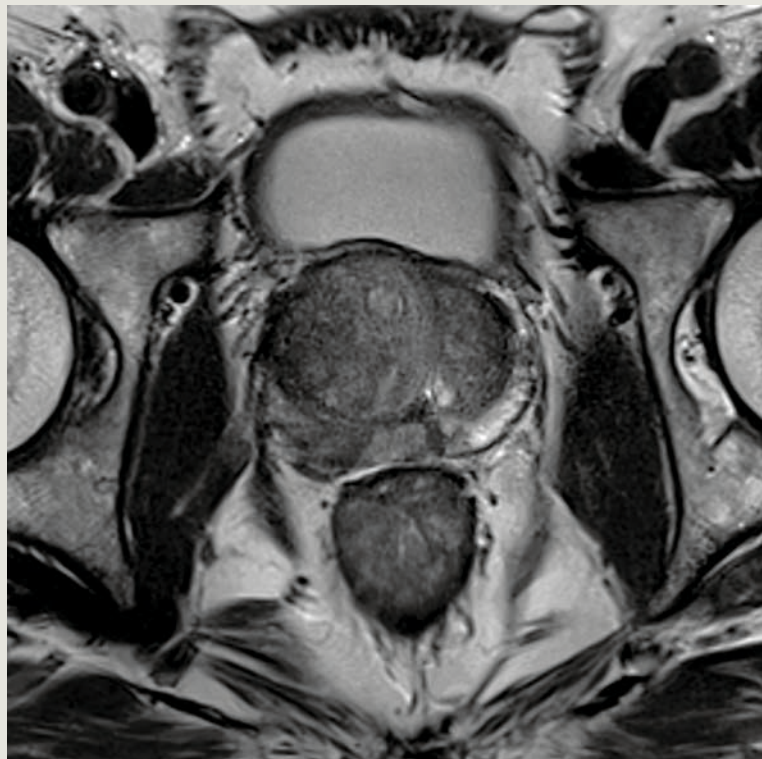
www.siemens.com/breast-mri

BREAST MRI: From clinical imaging to biopsy guidance, MAGNETOM Skyra and Tim 4G offer a wide selection of breast coils and outstanding image quality.



Prostate
MRI

www.siemens.com/prostate-mri



PROSTATE MRI: With the high-density spine and body coils alone or in combination with an endorectal coil, Tim 4G delivers excellent flexibility in multiparametric imaging of the prostate in terms of morphology, physiology and function.

St. Andrews Hospital, Adelaide, Australia



Go for consistent results, efficiently

Patients, referrers, radiologists – they all have a unique set of needs. Balancing their requirements, while ensuring high-quality results and keeping to schedule, is no easy task.

MAGNETOM Skyra helps you master these challenges.

Integrated DotGO workflow allows you to manage and create tailored protocols and strategies.

Dot Cockpit provides you with a comprehensive overview of all processes. And preconfigured Dot Engines save valuable time for standard procedures.

For true flexibility, consistency and efficiency in MRI.

Go for consistent results, efficiently

with DotGO workflow

Less than
1 minute
exam-time variation⁸

88%
of MRI exams
covered by
Dot engines⁹



80% better
usability in MRI
exam configuration³

Flexibility

With one central user interface to configure any protocol and flexibly create your exam strategies, DotGO empowers you to define a higher standard of care and service for more patients and referrers. And it lets you adjust strategies on-the-fly to accommodate a multitude of clinical requirements, individual patient needs and changing scenarios.

“The key feature of the new DotGO is the ability to quickly see your entire protocol on one page, as opposed to having to drill down multiple levels to see what your protocols actually are. It gives us a great overview of the protocol. You know exactly what’s in there at any given time just by glancing at it.”⁶

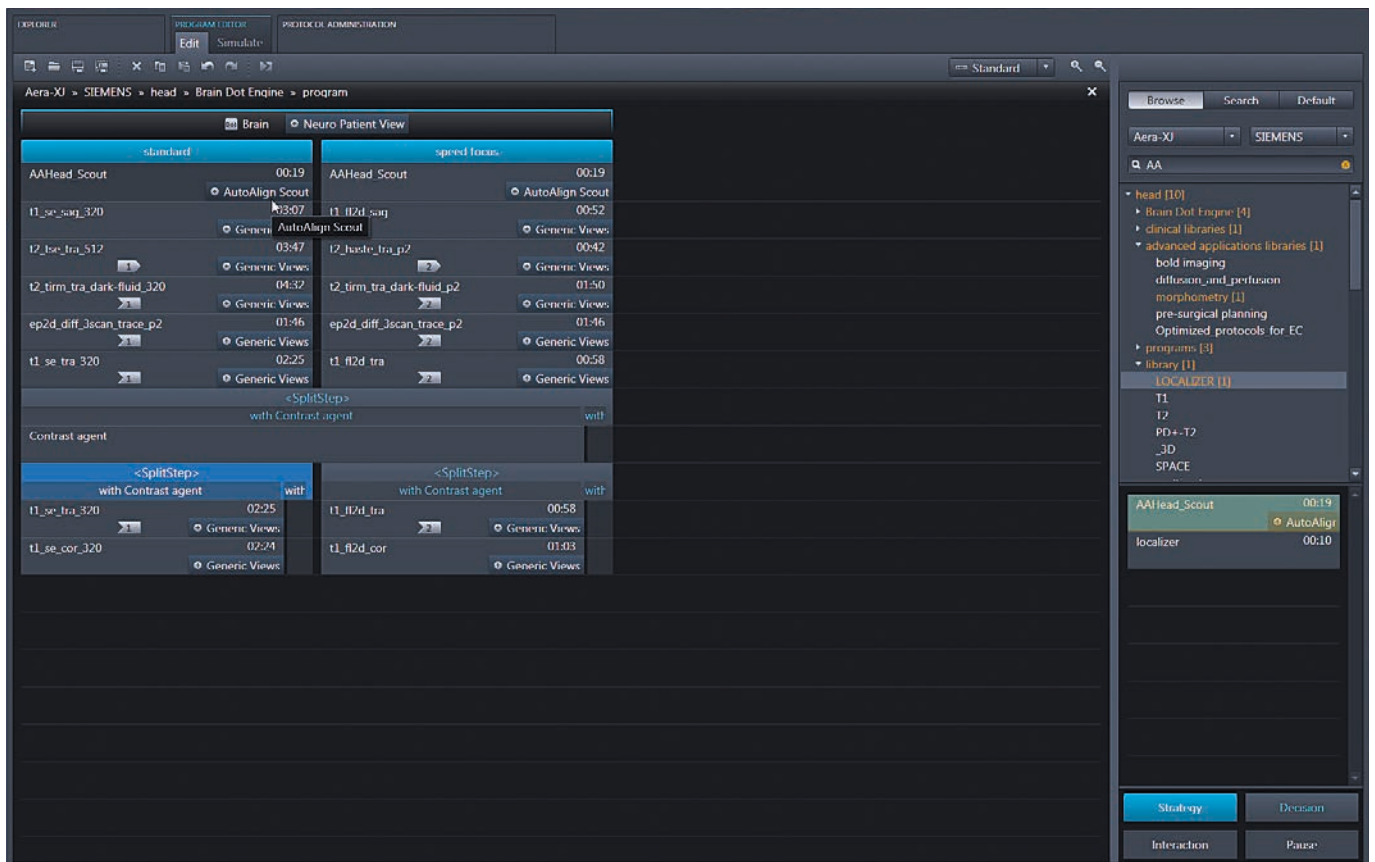
Anthony Pavone
Chief MRI Technologist
Zwanger-Pesiri Radiology, New York, USA

Consistency

DotGo enables you to standardize your MRI operations with a comprehensive guidance system, predefined strategies and Dot engines that create reproducible, high-quality outcomes every time. This significantly reduces the need for rescans and allows any technician to perform any exam with the same consistent results – even for complex cardiac imaging.

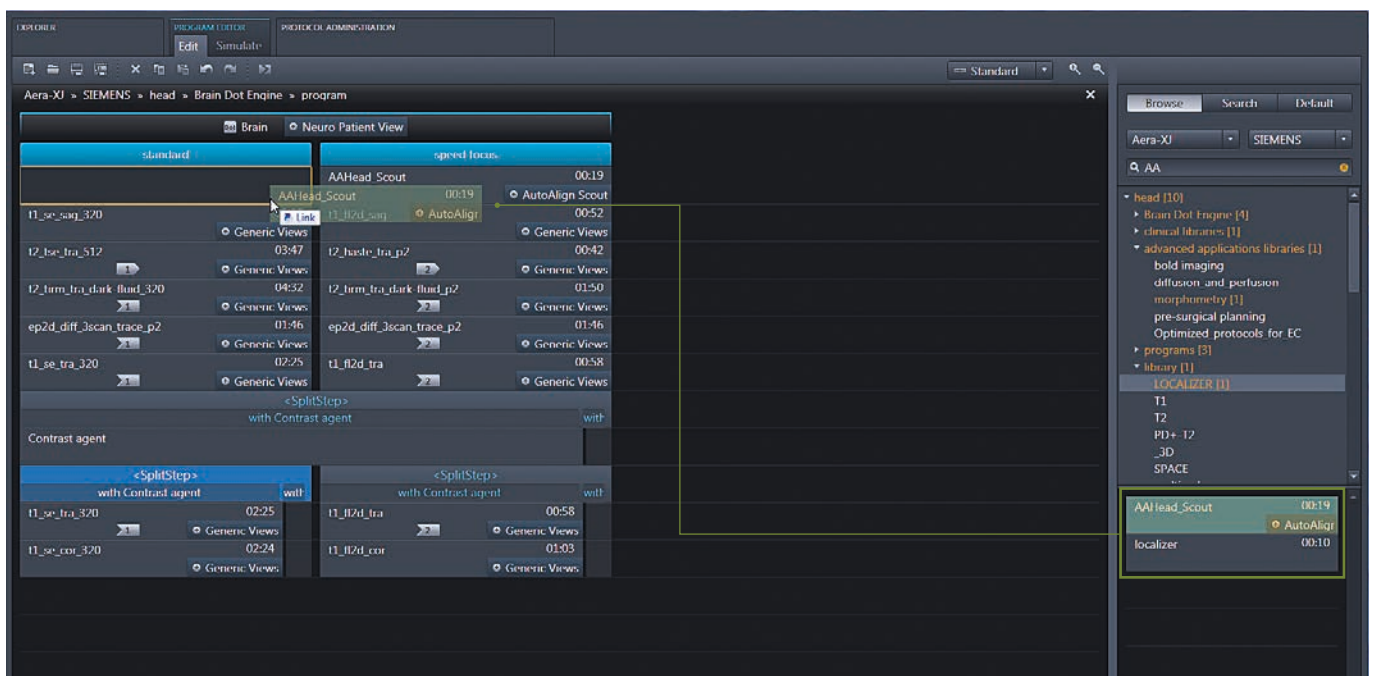
Efficiency

Thanks to DotGO’s automated functionalities, MAGNETOM Skyra dramatically improves the efficiency of your MRI workflow. Auto-slice positioning, auto-voice commands and auto-organ labeling reduce the level of interaction required from technicians, freeing them up for other important tasks, as well as standardizing exam times and lowering costs.

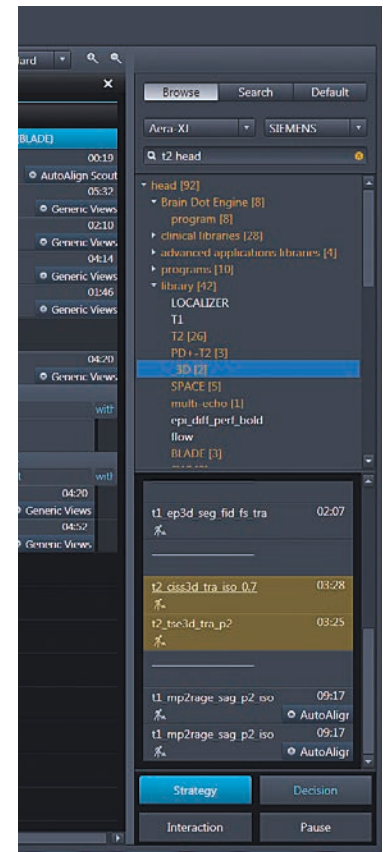
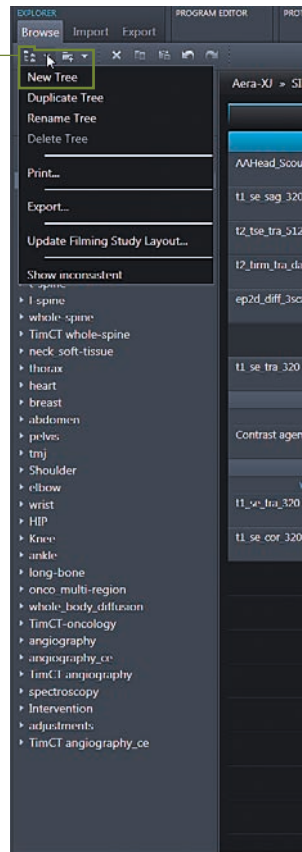


Dot Cockpit: A central user interface enables fast and intuitive protocol configuration and management. Dot Cockpit delivers up to 80%¹⁰ greater usability.

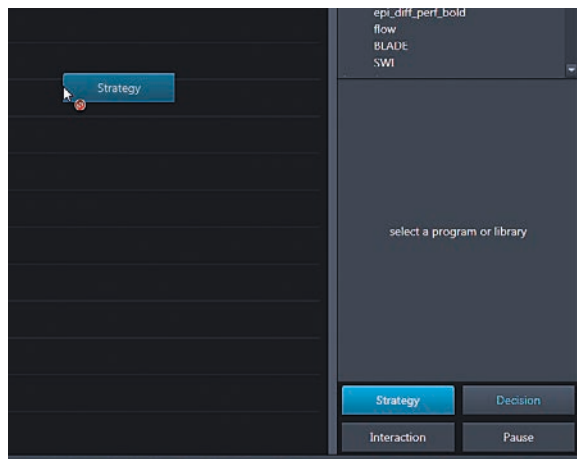
Drag & drop from the sidebar in Editor



Multiple User Trees



Create a strategy with one click (drag & drop)

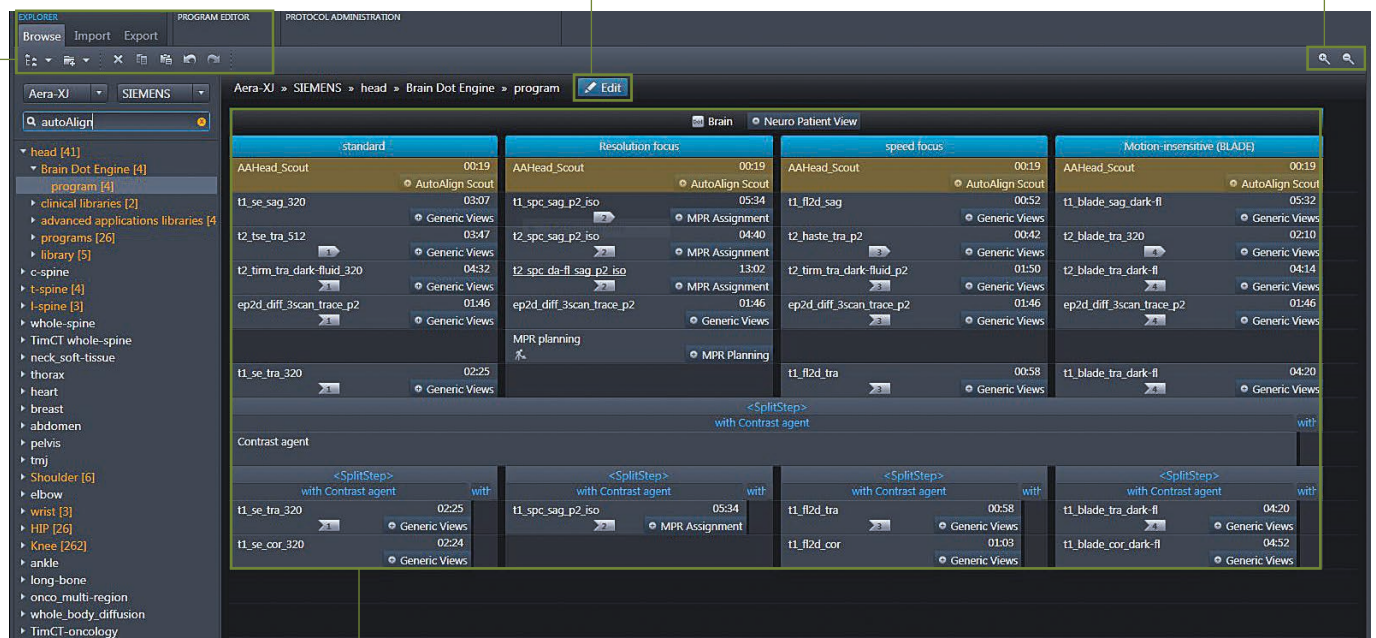


Dynamic context search, highlighting results

Explorer and Editor in one interface Easy navigation and shortcuts

Edit protocols instantly

Zoom in and out to conveniently display protocols



Build as many strategies as you need



Brain Dot Engine
More efficient and reproducible brain exams.



Spine Dot Engine
Optimized spine imaging for a wide range of patients and conditions.



Breast Dot Engine
Increased certainty in breast imaging.



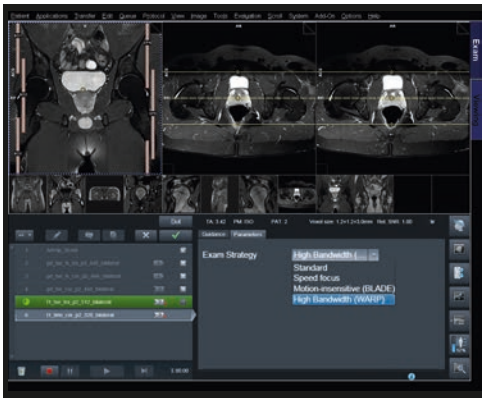
Cardiac Dot Engine
Up to 50%¹ increase in patient throughput.

"Dot engines really enhance our throughput in day-to-day scanning, but also improve quality reproducibility. Dot helps technicians and radiologists produce excellent images."⁶

Anthony Pavone
Chief MRI Technologist
Zwanger-Pesiri Radiology, New York, USA



TimCT Angio Dot Engine and Tim CT Onco Dot Engine
A unique combination of Siemens' technologies, helping you achieve one smooth Field of View (FoV) using the Continuous Table Move.



Large Joint Dot Engine

Increased consistency for all large joints – hip, shoulder, and knee.



Abdomen Dot Engine

Optimized bolus timing for dynamic liver examinations.



Angio Dot Engine

Optimally timed contrast images with interactive bolus timing.

“The number of failed examinations has been drastically reduced by the Dot engines and the angiographies have become better. Everything is simply much more standardized now.”⁶

Prof. Thomas Vogl
Medical Director of the Institute for
Diagnostic and Interventional Radiology of
the University Hospital Frankfurt, Germany
Spokesperson of the Frankfurt Klinikallianz



Expand your MRI services

Demographic change, demand for innovation and a rise in chronic diseases call for new MRI solutions.

Trendsetting Applications offer an unparalleled range of clinical services that make day-to-day operations smoother, faster and more efficient for radiologists, patients, and management.

MAGNETOM Skyra is designed with you and your patients in mind. Its unique Life Design features increase comfort and satisfaction, maximize efficiency and offer greater investment protection.

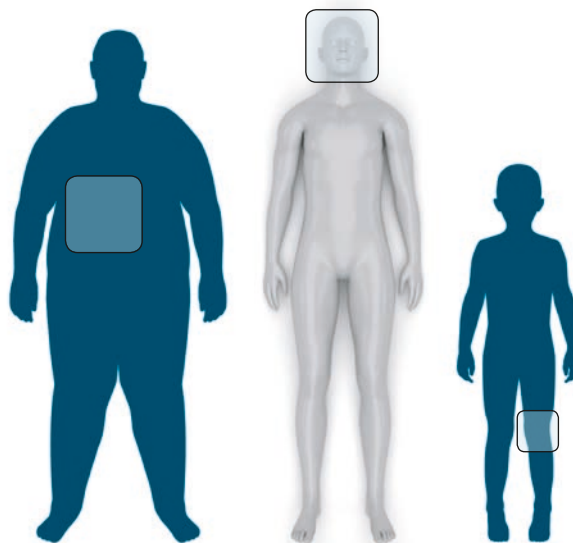
Expand your MRI services

with Trendsetting Applications

Grow your MRI services with Body MRI

Get closer than ever before with TimTX TrueShape

Access the broadest application portfolio on the market¹¹



More applications

Siemens offers the broadest portfolio of MR applications on the market. With MAGNETOM Skyra and Trendsetting Applications, you can deliver a comprehensive and unique range of 3T services seamlessly integrated with DotGO. As a result, you can expand and differentiate your offering, making even the most challenging of exams part of your clinical routine.

"The images are exceptional, and the handling of the system and the patient will make MRI diagnostics much more efficient in the future. This opens up new opportunities for further integration of cutting-edge scientific developments into clinical routine."⁶

Prof. Stefan Schönberg, MD
Director, Institute for Clinical Radiology and Nuclear Medicine
University Medical Center Mannheim, Germany.



More than 70%
of research performed using
3T systems worldwide is
conducted on a Siemens
MAGNETOM 3T scanner.¹²

More patients

Trendsetting Applications help you open up your service offering to more patient groups. So you can accommodate a larger variety of medical conditions as well as diverse body shapes and sizes. Furthermore, shorter breath holds and reduced scan times mean less need for sedation, fewer rescans, and greater patient satisfaction.

More research

Over 70%¹² of 3T MRI research worldwide is conducted on Siemens equipment. With good reason – because MAGNETOM delivers a powerful system coupled with leading-edge applications and excellent support services. Moreover, Siemens actively engages with the research community, helping you add value to your work.

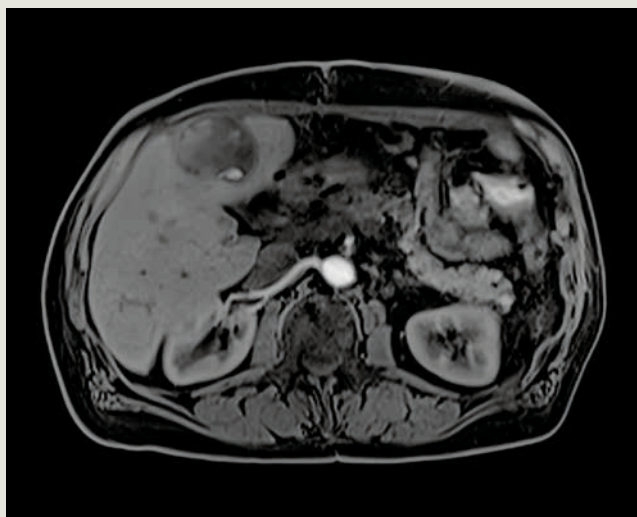


www.siemens.com/body-mri

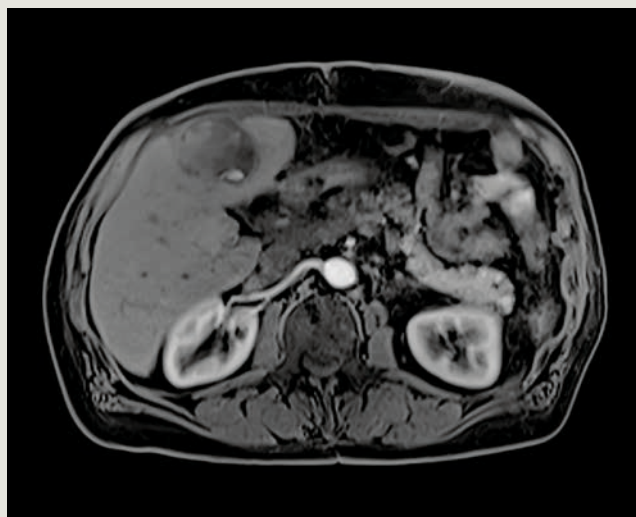
FREEZEit: Take abdominal imaging to the next level with our embrace motion technology. MRI exams of the liver have become increasingly difficult due to contrast timing challenges and breathing motion. FREEZEit, combining TWIST-VIBE and StarVIBE, makes MRI faster and more robust than ever, overcoming previous limitations and significantly pushing the boundaries of what's possible.

TWIST-VIBE: Benefit from high temporal and high spatial resolution so that you always get the right contrast in dynamic examinations.

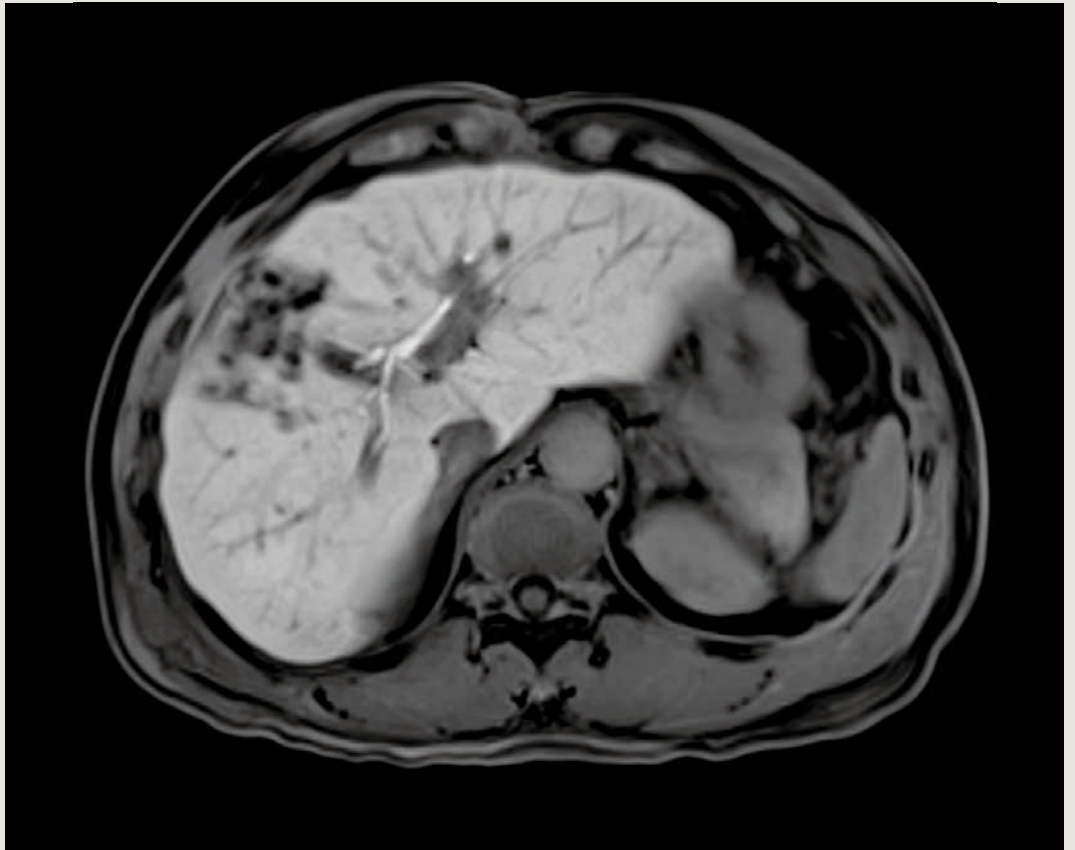
University Hospital IKRN, Mannheim, Germany



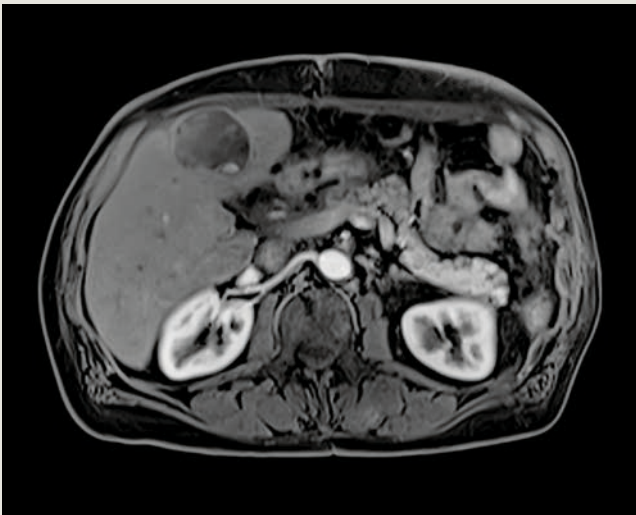
2 seconds



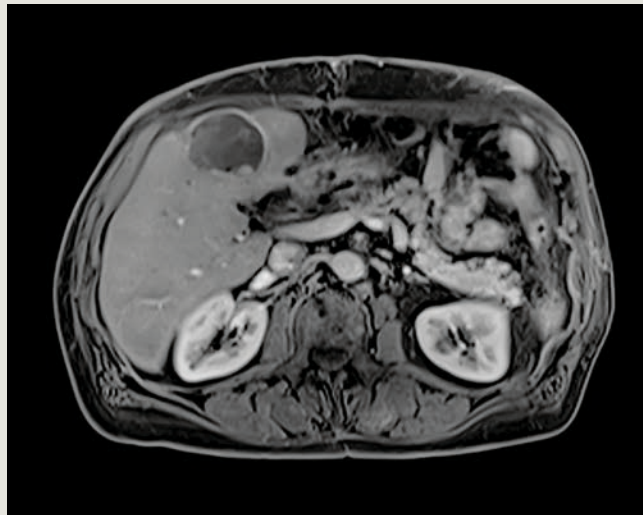
4 seconds



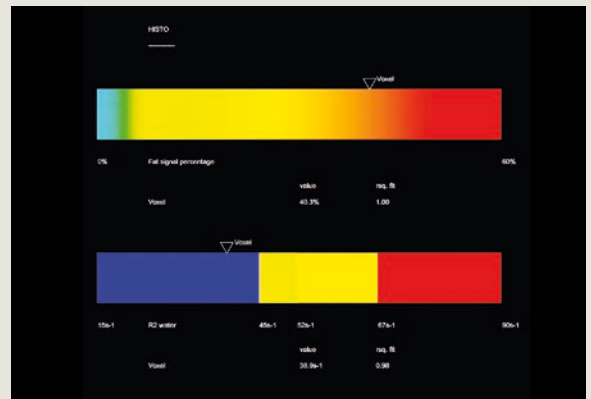
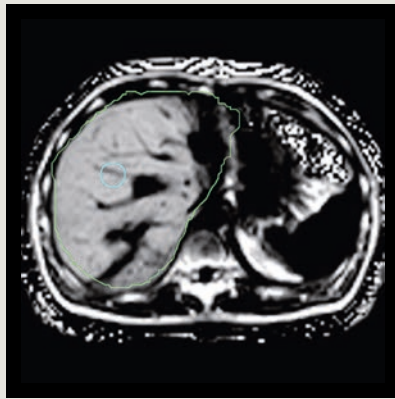
StarVIBE: Enable free-breathing and contrast-enhanced exams for a range of patient groups thanks to StarVIBE's intelligent insensitivity to motion artifacts.
Mount Sinai Med Hospital, New York, USA



7 seconds



14 seconds

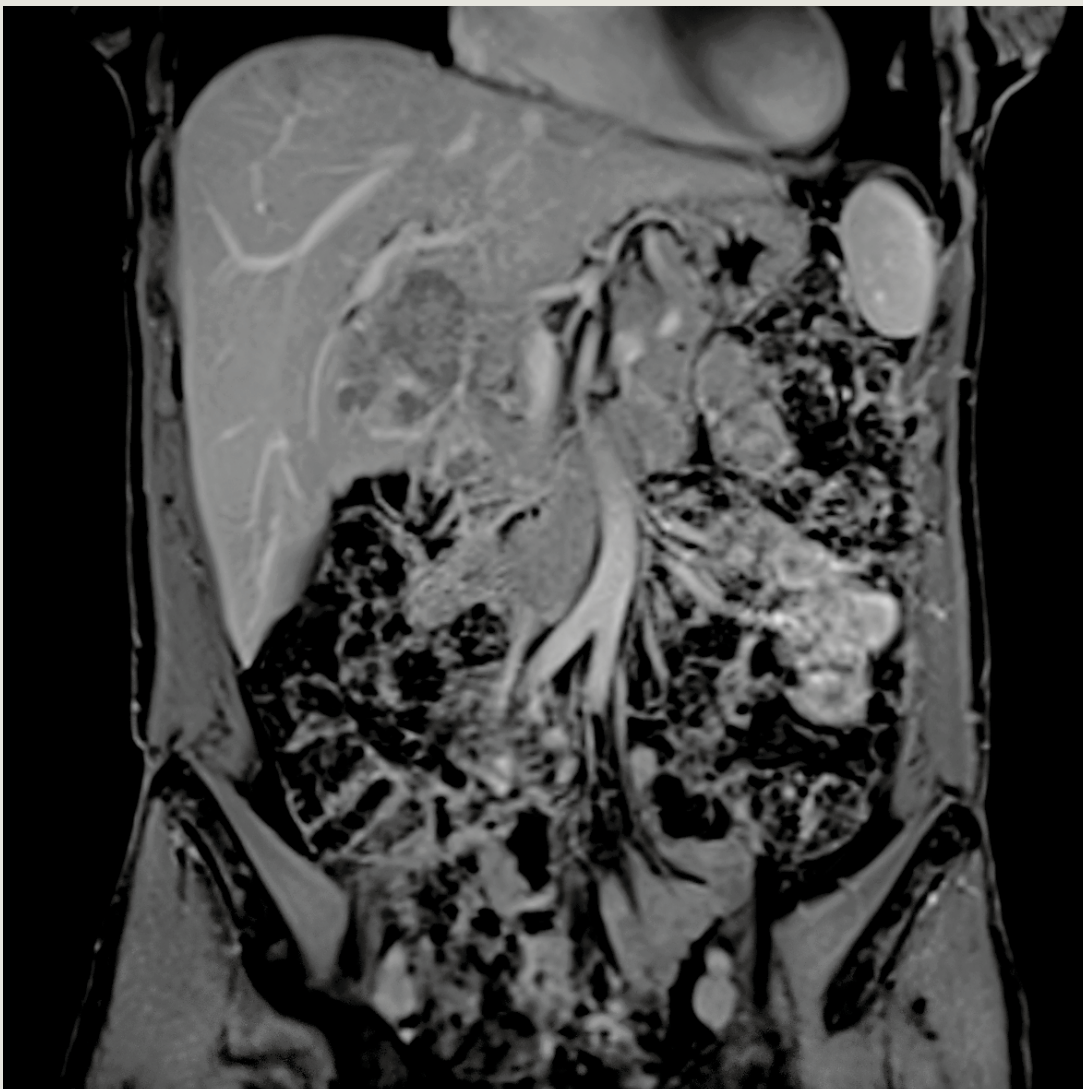


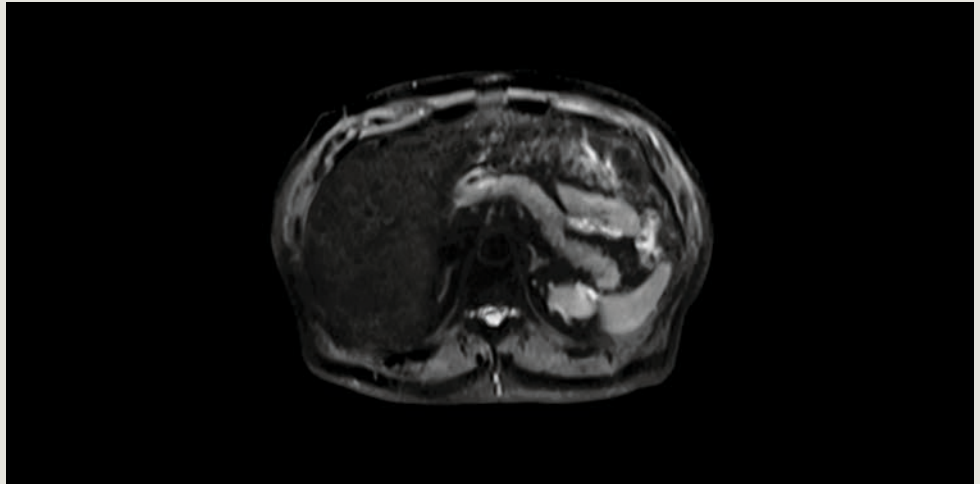
LiverLab: Monitor the growing number of liver disease cases. LiverLab supports quantitative, non-invasive liver evaluation.

ZEMODI, Bremen, Germany

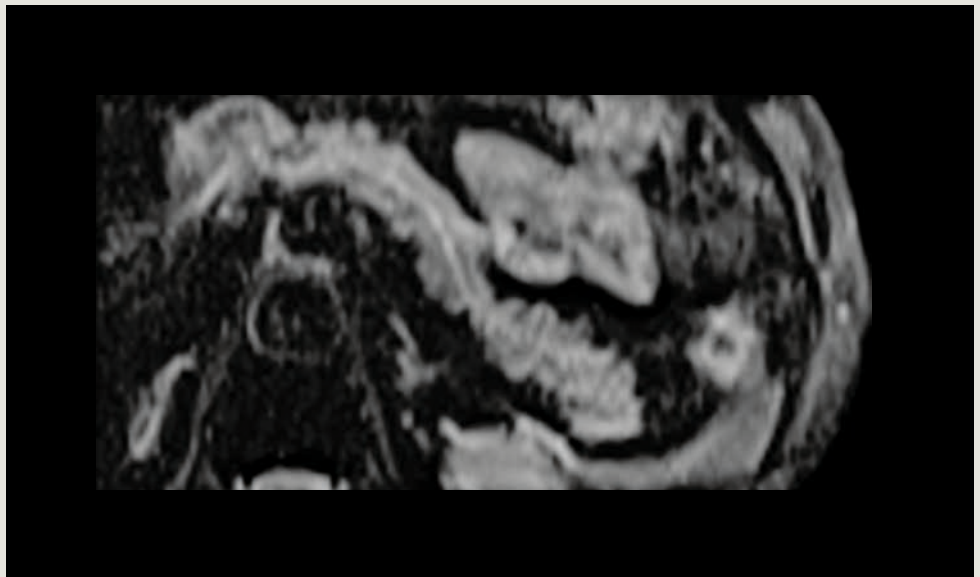
CAIPIRINHA: Address patients with limited breath-hold capacity with Siemens' unique CAIPIRINHA application and ultra-short breath holds – standard with your MAGNETOM Skyra.

Calgary John James Hospital, Deakin, Australia



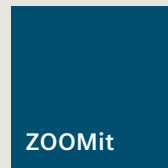


Conventional DWI, b=50

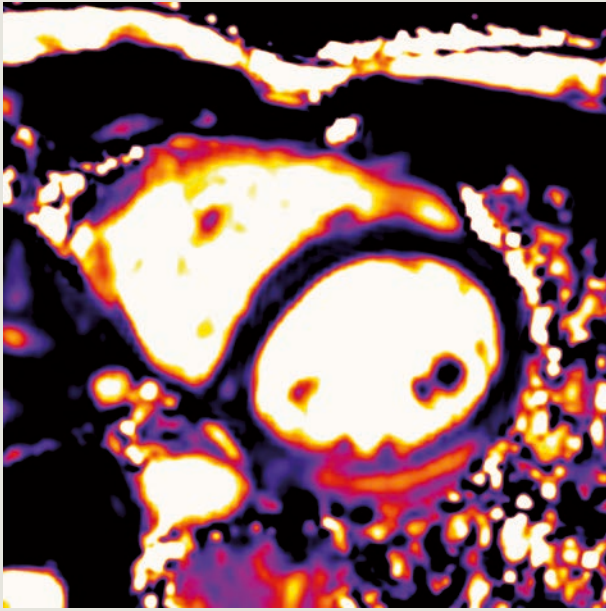


ZOOMit DWI, b=50

ZOOMit: Zoom into your image to view the smallest details, improve diagnostics and expand research possibilities with ZOOMit, powered by TimTX TrueShape.



www.siemens.com/zoomit

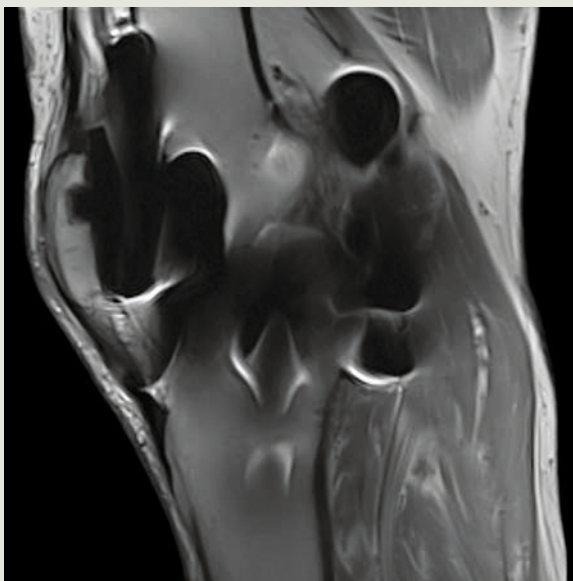


MyoMaps: Benefit from inline myocardial quantification, detect normally missed global, diffuse, myocardial pathologies (T1 Map), better depict cardiac edema (T2 Map), and improve early detection of iron overload (T2* Map) with MyoMaps, based on Siemens' unique HeartFreeze.

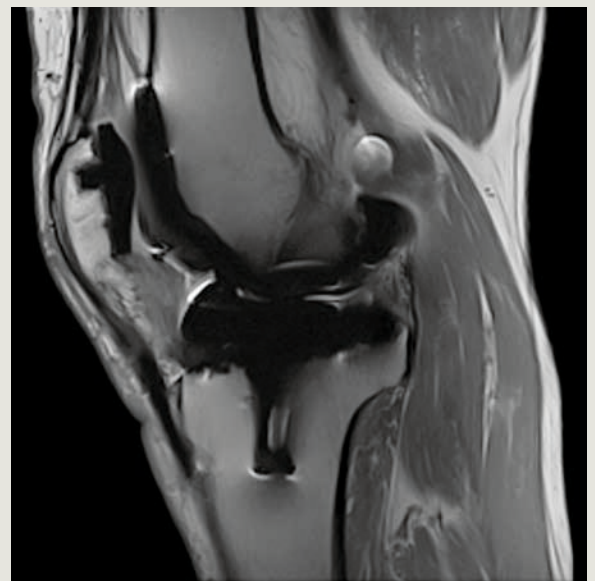
Diagnostikum Berlin, Berlin, Germany

Advanced WARP: Serve the rapidly-growing patient populations that have artificial joints.¹³ The benefits are substantial: infections can be diagnosed earlier and there's a significant gain in image quality for any MR indication.

University of Texas Medical Branch, Galveston, USA



Conventional



Advanced WARP



RESOLVE: Experience outstanding diagnostic performance with sharp, high-resolution DWI and DTI of the brain and spine.

Expand your MRI services

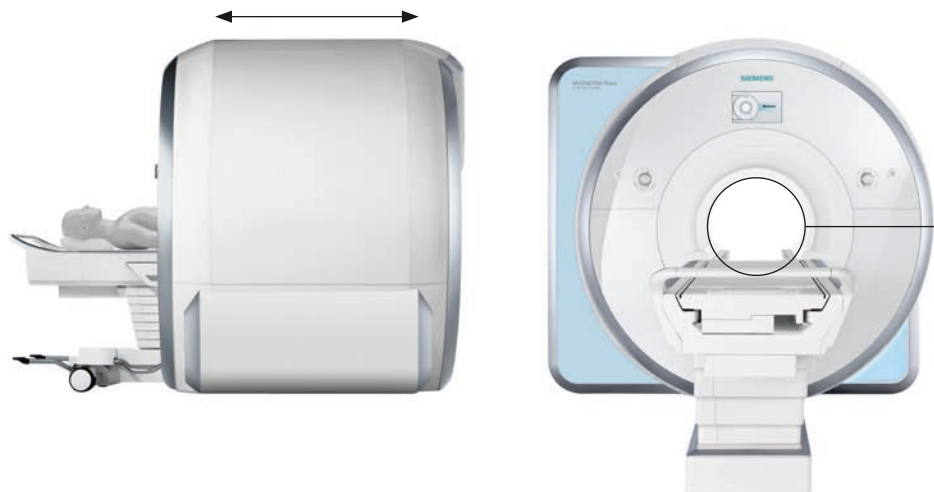
with Life Design

173 cm

ultra-short
magnet

**Illumination
Moodlight**

Up to **97%²**
reduction in
sound pressure
with Quiet Suite



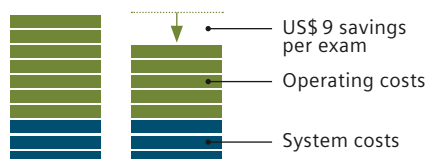
Maximized patient comfort

A key element of Siemens MRI Life Design is putting the patient first. MAGNETOM Skyra's 70 cm open bore allows 30 cm of space above the patient's face, improving comfort. The shortest magnets in the industry enable more exams to be performed with the head outside the bore. These and other leading-edge features increase satisfaction and allow you to serve more patient groups.

“With the 70 cm Open Bore system, the number of claustrophobic panic attacks among patients fell by 50%. Some patients honestly say that they enjoy their examinations. Additionally, MAGNETOM Skyra offers strong support for the immediate completion of reports, helping provide the standard of service that we want.”⁶

Dr. Christoph Tillmanns
Head of Cardiology
Diagnostikum Berlin, Berlin, Germany

70 cm
open bore



MAGNETOM Skyra’s unique design means it is patient-friendly and also saves costs.

Maximized workflow efficiency

Life Design helps make your MRI operations more efficient and economical. The Tim Dockable Table helps you streamline exam preparation, optimizing your department workflow. And the central *syngo* user interface offers a consistent look and feel at every scanner, helping staff perform tasks faster and enhance their productivity.

Minimized lifecycle costs

The modern, compact design of Siemens scanners means they are easy and efficient to install and have low space requirements. Zero helium boil-off and minimum power and cooling demands help reduce lifecycle costs, and improve your eco-footprint. All of this adds up to enhanced performance, lower resource consumption, and greater investment protection.



Tim Dockable Table: Enable fast patient preparation with Tim 4G directly integrated into the table, supporting easy patient transport, more comfort for immobile patients, and flexibility in emergency situations. The table holds up to 250 kg/550 lb to accommodate more patient groups.



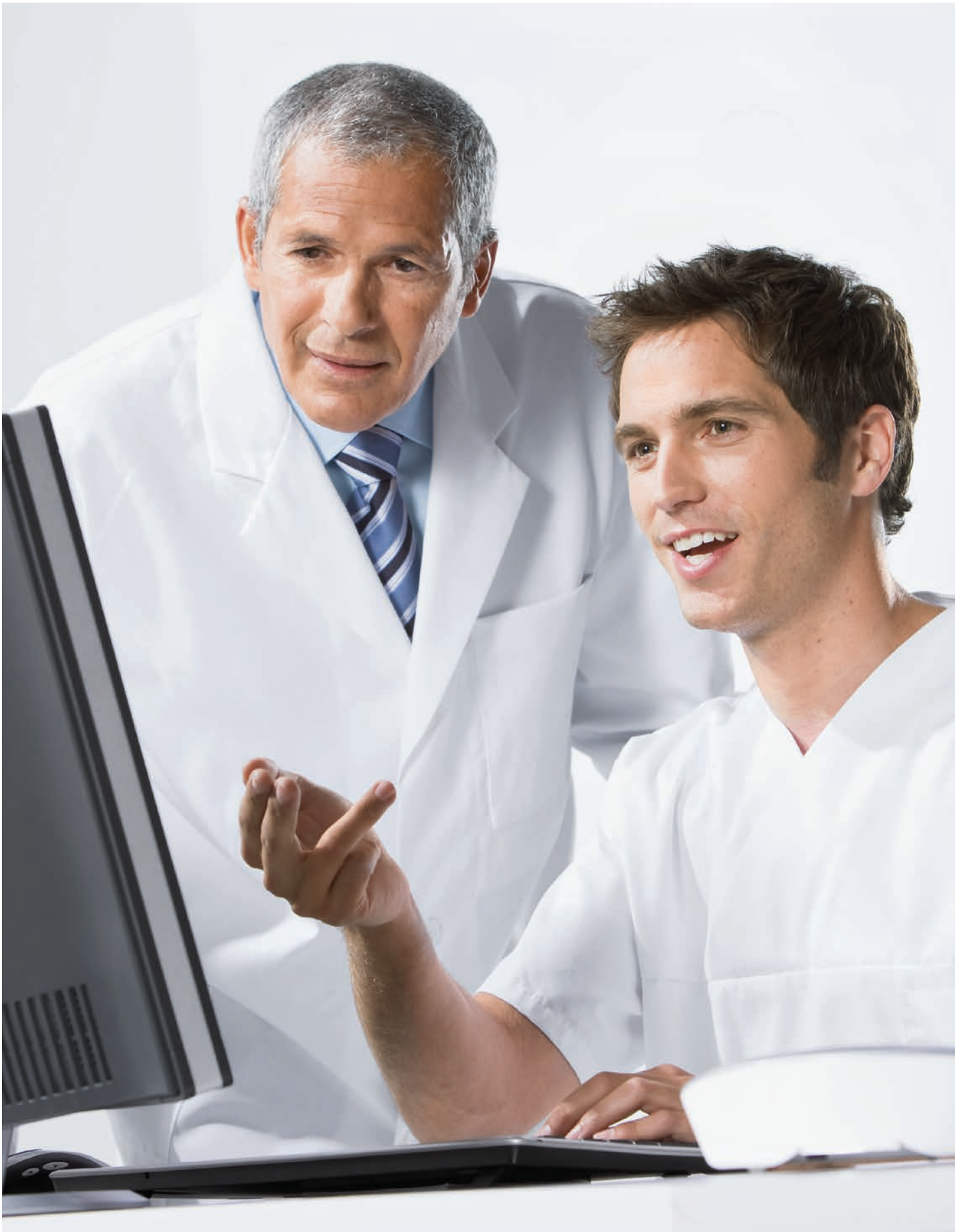
Tim coil technology: Tim 4G technology accelerates patient set-up and provides a high level of patient comfort.



**Quiet Suite,
hear it
yourself.**

www.siemens.com/quiet-suite

Quiet Suite: Conduct complete, quiet exams for neurology and orthopedics, with up to 97% reduction in sound pressure². Quiet Suite minimizes the need for sedation of certain groups of patients such as children⁷ and the elderly – and all with no compromises on image quality. Because imaging is to be seen, not heard.

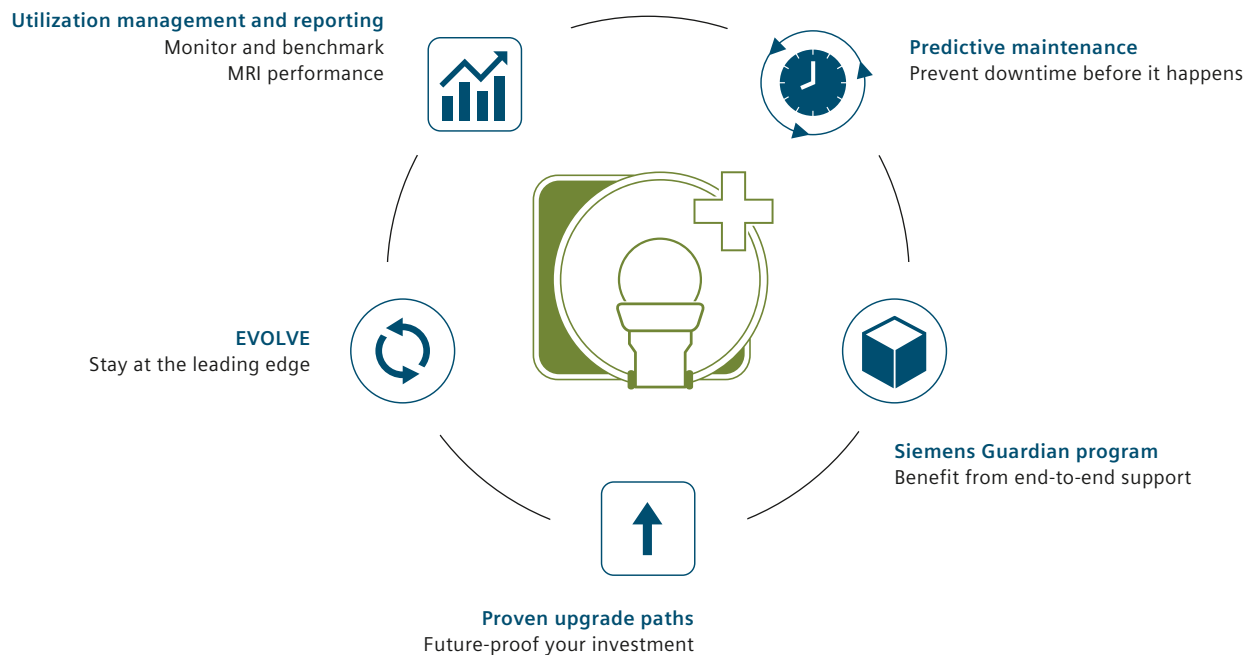


Service and exchange

Siemens' end-to-end services ensure you stay at the leading edge of 3T technology throughout the entire MRI lifecycle – from installation, to operation, to upgrades, to ongoing support. Moreover, our diverse communication platforms and communities keep you up to speed on the world of MRI and enable you to share your ideas and experiences with your peers.

Service and exchange

Comprehensive services



Utilization management and reporting

With our utilization management and reporting solution, you know that you are getting the most out of your MRI scanner. It allows you to monitor KPIs and benchmark your system against other Siemens' MRI machines at any facility or organization. So you can keep track of your MRI performance, and reap the maximum reward from your scanner.

Predictive maintenance

When systems go down, it impacts both your ability to care for your patients and your bottom line. Siemens provides a predictive maintenance service to help you minimize lost time. It informs you when a part of your MRI system is likely to fail, enabling you to plan repairs and prevent downtime before it happens.



EVOLVE: Keep your hardware and software up to date at all times – a key factor in enhancing performance and diagnostic quality. You receive all applicable upgrades for software and the *syngo* OS, plus at least one workstation hardware upgrade within the first six years.

Siemens Guardian program

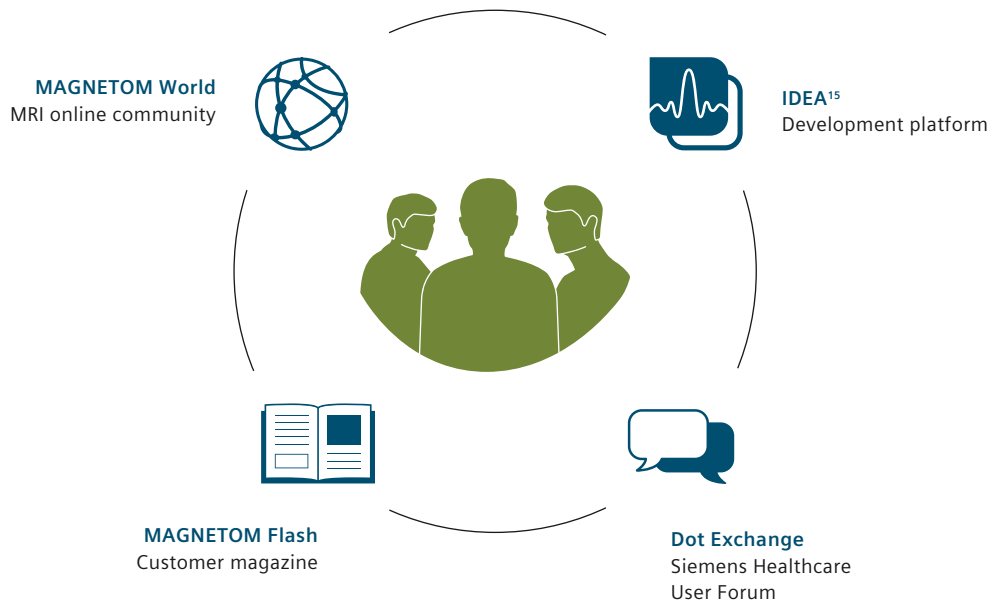
Our Guardian program provides the latest service technology so you can better manage your MRI system. It combines many features in a single package – offering real-time system monitoring, expert advice to improve workflow efficiency, and proactive maintenance and support. Moreover, it guarantees defined repair times, giving you peace of mind.

Proven upgrade paths

With MAGNETOM scanners, taking your MRI system to the next level is simplicity itself, thanks to clearly defined upgrade paths. In fact, Siemens has built an entire organization (CDV) to help customers truly maximize their system life – and in turn, to increase their return on investment.

Service and exchange

Peer-to-peer information



MAGNETOM World

Siemens' global MRI community offers peer-to-peer support and information. Radiologists, cardiologists, technologists and physicists have all contributed with publications, presentations, training documents, case studies and more – all freely available to you via this unique network. Plus, the bi-annual MAGNETOM World Summit is the ideal opportunity to share and exchange ideas.

MAGNETOM Flash

MAGNETOM Flash is the MR customer magazine. Published quarterly, it features up-to-date clinical case studies, application tips, as well as technical and product information relevant to you. All content is carefully compiled by experts to meet the needs of today's MRI users in both clinical and research scenarios. In fact, 98.5% of readers report that MAGNETOM Flash is clinically relevant.¹⁴



Visit
MAGNETOM
World

www.siemens.com/magnetom-world

On MAGNETOM Flash: “An excellent and useful combination of technological and clinical articles that both keep one up to date with advances in MRI and provide practical assistance for day to day practice – good and interesting learning material.”⁶

Mark Lourensz, St Vincent’s Hospital
Fitzroy, Victoria, Australia

Dot Exchange

Part of the Siemens Healthcare User Forum, Dot Exchange¹⁵ connects Dot users, enabling them to share their clinical experience of working with the system. By registering on www.siemens.com/dot-exchange, you can upload and discuss protocol files and engage in dialog with peers. Plus, you can access a host of interesting features and articles, making sure you are the first to hear about the latest developments in MRI.

IDEA

IDEA¹⁵ is an open development platform supporting the largest and most active 3T research community in the world. It brings users from across the globe together and fosters innovation in the field of MRI. Members collaborate online at www.mr-idea.com and at the annual International Society of Magnetic Resonance in Medicine meeting, where they present and discuss new developments.



MAGNETOM Skyra
Technical specifications

Field strength	3 Tesla
Bore size	70 cm Open Bore design
System length*	173 cm
System weight (in operation)*	7.3 tons
Minimum room size*	31 m ²
RF	Tim [204x 24] ¹⁶ [204 x 48] [204 x 64] [204 x 128]
Gradient strength	XQ Gradients (45 mT/m @ 200 T/m/s)
Helium consumption	Zero Helium boil-off technology

* Minimum total space requirement for magnet, electronics, and console room

On account of certain regional limitations of sales rights and service availability, we cannot guarantee that all products included in this brochure are available through the Siemens sales organization world-wide. Availability and packaging may vary by country and are subject to change without prior notice. Some/All of the features and products described herein may not be available in the United States. Some products are still under development and not commercially available yet. Their future availability cannot be ensured. The information in this document contains general technical descriptions of specifications and

Global Business Unit

Siemens AG
Healthcare
Magnetic Resonance
Henkestraße 127
91052 Erlangen
Germany
Phone: +49 9131 84-0

Local Contact Information In the USA

Siemens Medical Solutions USA, Inc.
51 Valley Stream Parkway
Malvern, PA 19355-1406
USA
Telephone: +1-888-826-9702
www.usa.siemens.com/healthcare

In China

Siemens Medical Park, Shanghai
278, Zhouzhu Road
SIMZ, Nanhui District
Shanghai, 201318, P.R. China
Phone: +86-21-38895000
Fax: +86-10-28895001

optional features which do not always have to be present in individual cases. Siemens reserves the right to modify the design, packaging, specifications, and options described herein without prior notice. Please contact your local Siemens sales representative for the most current information.

Note: Any technical data contained in this document may vary within defined tolerances. Original images always lose a certain amount of detail when reproduced.

Please find fitting accessories:
www.siemens.com/medical-accessories

In Japan

Siemens-Asahi
Medical Technologies Ltd.
Takanawa Park Tower 14F
20-14, Haigashi-Gotanda
3-chome
Shinagawa-ku, Tokyo 141-8644
Phone: +81 3 5423 8411

In Asia

Siemens Pte Ltd
Healthcare
Regional Headquarters
The Siemens Center
60 MacPherson Road,
Singapore 348615
Phone: +65 6490-6000
Fax: +65 6490-6001

¹ Royal Bournemouth Hospital, UK, Cardiac Dot Engine Workflow Study.

² Data on file; results may vary.

³ Dot Cockpit Usability Study (2013) for Dot and non-Dot users.

⁴ Based on the scan time difference between a 30-channel set-up and an 18-channel set-up with otherwise identical parameters and same SNR

⁵ Comparison of average SNR between Tim 4G and first generation integrated coil technology

⁶ The statements by Siemens' customers described herein are based on results that were achieved in the customer's unique setting. Since there is no "typical" hospital and many variables exist (e.g., hospital size, case mix, level of IT adoption) there can be no guarantee that other customers will achieve the same results.

⁷ MR scanning has not been established as safe for imaging fetuses and infants under two years of age. The responsible physician must evaluate the benefit of the MRI examination in comparison to other imaging procedures.

⁸ Zhongshang Hospital Fudan University, CN, Abdomen Dot Engine Workflow Study

⁹ Evaluation of 2.2 million Siemens MR exams, 2013

¹⁰ Compared to MR protocol configuration without Dot Cockpit, Usability Study, 2013

¹¹ Based on a comparison of Web pages of the key competitors (2014) on their offered applications.

¹² Percentage based on search hits in Google Scholar for sum of product name permutations in 16 articles acknowledging the use of 3T MRI (2014).

¹³ MR imaging of patients with metallic implants brings specific risks. However, certain implants are approved by the governing regulatory bodies to be MR conditionally safe. For such implants, the previously mentioned warning may not be applicable. Please contact the implant manufacturer for the specific conditional information. The conditions for MR safety are the responsibility of the implant manufacturer, not of Siemens.

¹⁴ 2013 MAGNETOM Flash reader survey. Data on file.

¹⁵ This website provided by Siemens AG may be used solely in accordance with the general terms and conditions of use, available prior to registration/login on the website itself.

¹⁶ The product/features (here mentioned) is a development tool available under contract with Siemens. Please contact your local Siemens organization for further details.

Global Siemens Headquarters

Siemens AG
Wittelsbacherplatz 2
80333 Muenchen
Germany

Global Siemens Healthcare Headquarters

Siemens AG
Healthcare
Henkestraße 127
91052 Erlangen
Germany
Phone: +49 9131 84-0
www.siemens.com/healthcare

Legal Manufacturer

Siemens AG
Wittelsbacherplatz 2
DE-80333 Muenchen
Germany