

SIEMENS



www.mipetsource.com

MI PET Source

Your comprehensive resource for growth

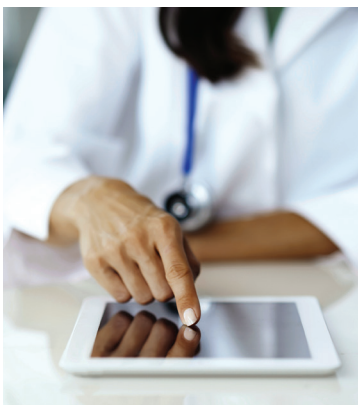
Answers for life.

MI PET Source

The shifting healthcare industry is putting extraordinary pressure on providers, requiring imaging centers to do more with less. Having the right partner to help increase efficiencies and expand patient access to new PET services is critical to success. Siemens' PETNET Solutions provides the tools and services needed to start a new practice or grow an existing practice.

MI PET Source™ is an exclusive online portal created for Siemens' PETNET Solutions customers. From a wide range of clinical tools to the latest reimbursement information and outreach marketing kits, MI PET Source assists in facilitating the education and communication of the value of PET/CT to ordering physicians. MI PET Source is an invaluable resource for building, educating and growing a clinical practice.

- Access a wide-range of clinical and reimbursement resources
- Learn via a comprehensive suite of educational tools
- Grow your business with practice management and growth resources



MI PET Source features an array of comprehensive tools and resources to assist in refining skills and growing your business.



Access	Learn	Grow
<p>Access a wide-range of clinical and reimbursement resources for oncology, cardiology and neurology PET imaging:</p> <ul style="list-style-type: none"> • Appropriate use criteria for PET/CT • Clinical indication sheets • Series of white papers on the value of PET/CT • Clinical case studies • Clinical abstract database • Patient guides • Medicare resources • Private payer resources • Clinical toolkits 	<p>Learn via a comprehensive suite of educational tools:</p> <ul style="list-style-type: none"> • On-site training programs that cover a wide array of topics such as continuing education (CE) training modules • A suite of Siemens online training courses* • Variety of publications to keep you well-informed of the latest industry and clinical information in the field of molecular imaging 	<p>Grow your business with practice management and growth resources:</p> <ul style="list-style-type: none"> • PETNET Direct online dose ordering • Quick and easy reports • Ordering Physician Database • Outreach marketing toolkits • Synergy programs with Siemens

This full spectrum of tools and resources can help optimize your workflow, as well as drive referrals. Providing you with tools, programs, resources and more, MI PET Source can help take your business to the next level. For MI PET Source access and additional information, please visit www.mipetsource.com or contact your local Siemens' PETNET Solutions territory manager.

*Only available to Siemens imaging customers.

Global Siemens Headquarters

Siemens AG
Wittelsbacherplatz 2
80333 Muenchen
Germany

Global Siemens Healthcare Headquarters

Siemens AG
Healthcare Sector
Henkestrasse 127
91052 Erlangen
Telephone: +49 9131 84-0
Germany
www.siemens.com/healthcare

Global Business Unit Address

Siemens Medical Solutions USA, Inc.
Molecular Imaging
2501 N. Barrington Road
Hoffman Estates, IL 60192-2061
USA
Telephone: +1 847 304 7700
www.siemens.com/mi

Legal Manufacturer

Siemens Medical Solutions USA, Inc.
Molecular Imaging
810 Innovation Drive
Knoxville, TN 37932-2751
USA
Telephone: +1 865 218 2000
www.siemens.com/mi

Order No. A91MI-10422-1C-7600 | Printed in USA |
MI-2169.RF.JV.TW.1000 | © 01.2015, Siemens AG

Trademarks and service marks used in this material are property of Siemens Medical Solutions USA or Siemens AG. All other company, brand, product and service names may be trademarks or registered trademarks of their respective holders.

All comparative claims derived from competitive data at the time of printing. Data on file. Siemens reserves the right to modify the design and specifications contained herein without prior notice. As is generally true for technical specifications, the data contained herein

varies within defined tolerances. Some configurations are optional. Product performance depends on the choice of system configuration.

Please contact your local Siemens Sales Representative for the most current information or contact one of the addresses listed below. Note: Original images always lose a certain amount of detail when reproduced.

All photographs © 2015 Siemens Medical Solutions USA, Inc. All rights reserved.