

# 4D-MRI: Future of Radiotherapy of Moving Targets?

Kinga Barbara Bernatowicz; Rosalind Lucy Perrin; Marta Peroni; Damien Charles Weber; Antony John Lomax

Center for Proton Therapy (CPT), Paul Scherrer Institut, Villigen PSI, Switzerland

## Background

4D-CT imaging is widely used in radiotherapy planning of moving tumors to account for motion, and to provide the physical properties of tissue for dose calculations, e.g. electron density for conventional radiation therapy or proton stopping power for proton therapy. However, it is limited to representing only a single, averaged breathing cycle, often contains imaging artifacts, and contributes a substantial dose exposure for the patient. To over-

come these issues, a 4D-MRI imaging protocol applied to evaluating respiratory motion of the liver was proposed by von Siebenthal et al. [1].

This approach is capable of resolving irregular respiratory motion, with the added benefit of delivering no imaging dose to the patient. Unfortunately, whilst being a promising technique, MR imaging alone does not provide the physical properties of tissue required for accurate dose calculations. However, by combining the motion information pro-

vided by 4D-MRI, with the density data provided by single phase CT data, the advantages of motion imaging with 4D-MRI can now be applied to radiotherapy applications.

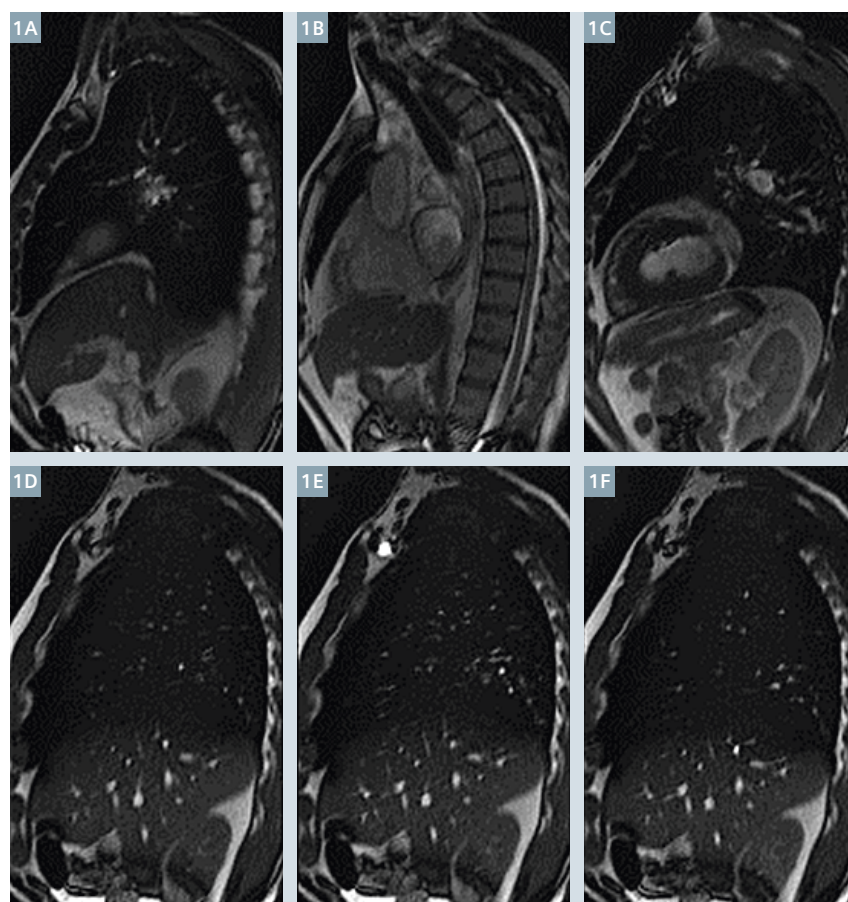
## 4D-MRI acquisition

The 4D-MRI protocol relies on the interleaved acquisition of a 'navigator' and different image slices in the sagittal plane (Fig. 1). The navigator is fixed at a single position throughout the acquisition time, and describes the motion state of the volume of interest at any instant during the acquisition. The actual 2D image slice is then scanned through the planned field-of-view (FOV).

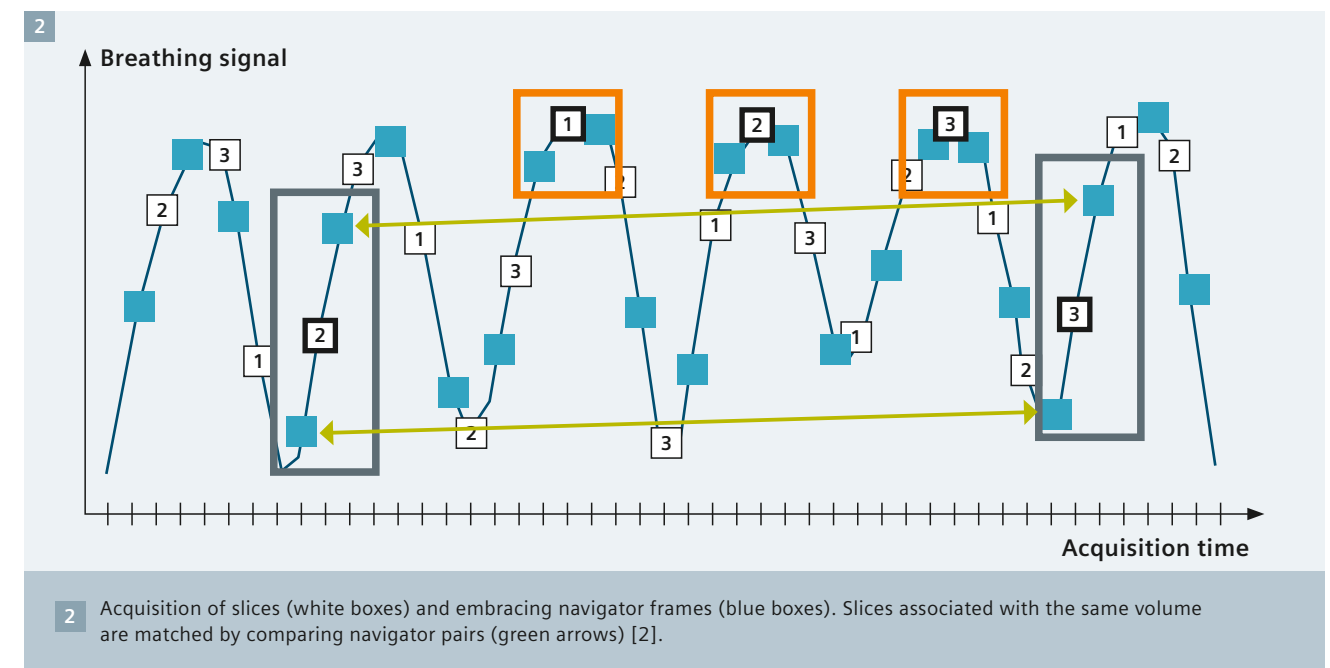
This experimental sequence\* does not make any assumptions about the breathing amplitude, its regularity, or the number of reconstructed phases. In contrast, commonly used methods for 4D imaging use a one-dimensional respiratory signal for sorting the 2D images, whereas 4D-MRI images can be retrospectively sorted based directly on the acquired navigator frames. The correspondence of the imaging slices is then established by comparing the two temporally embracing navigator frames (see Fig. 2). If these navigator frames are similar, the image slices can be stacked into a (3D) volume with the same time stamp and therefore, a complete 4D image data set with the same temporal resolution as the navigator frames can be reconstructed.

This approach has now been implemented on a 1.5T MAGNETOM Aera MR system (Siemens Healthcare, Erlangen, Germany) using an experimental version of the balanced steady state

\*Work in progress, the product is still under development and not commercially available yet. Its future availability cannot be ensured.



1 Sagittal slices through the thorax and upper abdomen, showing image slices (1A–C) and navigator slices (1D–F) acquired with the experimental 4D-MRI protocol\*.



free precession sequence (TrueFISP)\*. Images are acquired in batches of 3-5 minute duration, with up to one hour of total acquisition time and with image slice thicknesses of 4 to 6 mm. Recent advances in the field are now looking at the simultaneous acquisition of navigator and data slices, with use of other advanced sequences, for example CAIPIRINHA [3].

## Applications

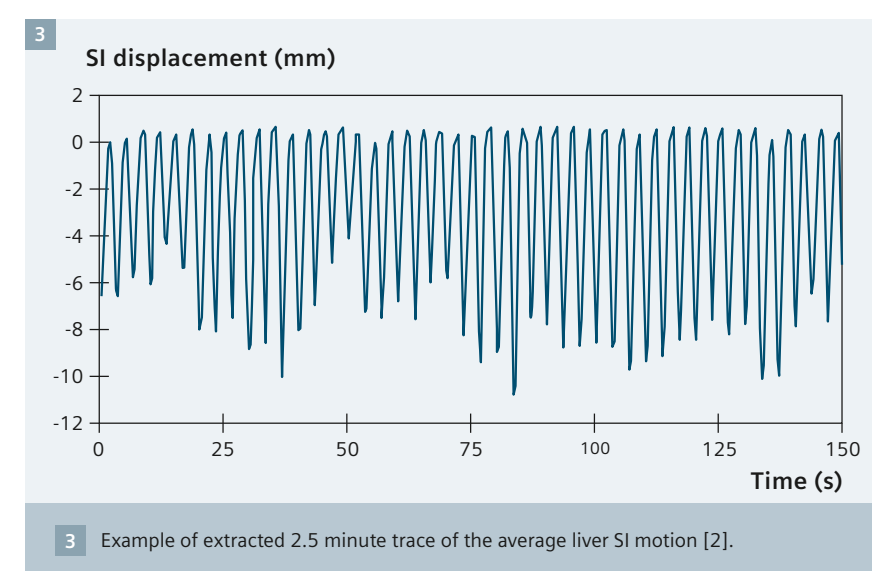
### • Intra- and inter-fraction motion studies

Since MRI involves no radiation dose to patients or volunteers, 4D-MRI protocols allow for repeated studies on the same subject and/or for longer time period acquisitions in order to capture breathing variability (Fig. 3). Motion deformation fields can also be extracted using deformable image registration.

### • Mapping motion from MRI-CT

The 4D-CT (MRI) method has now been developed within our group for simulating many 4D-CT data sets from a single, static reference CT and a data-base of motion deformation fields extracted from 4D-MRI studies

\*Work in progress, the product is still under development and not commercially available yet. Its future availability cannot be ensured.

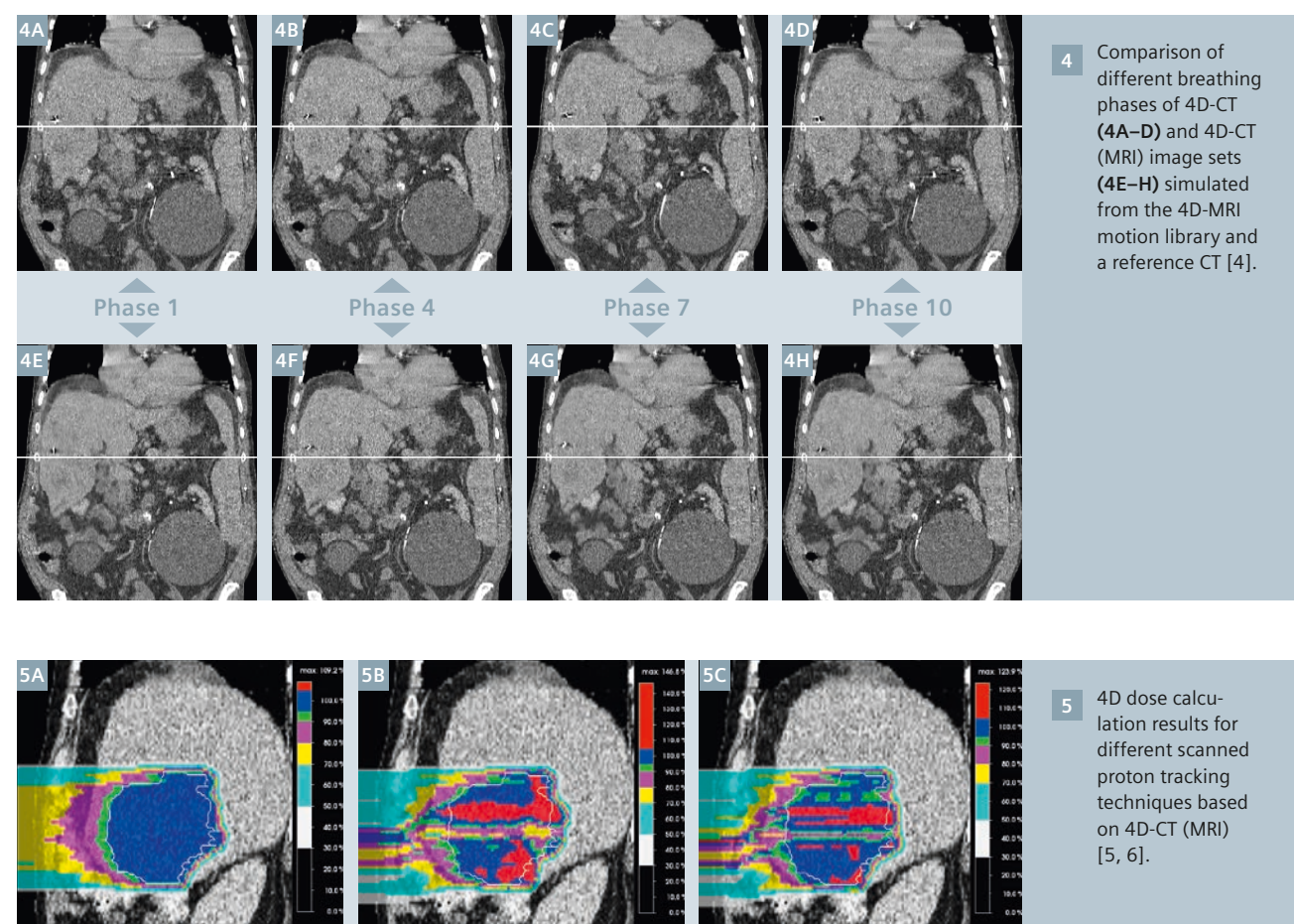


[4]. The mapping of motion information from 4D-MRI onto CT images is thereby achieved using subject-specific or population-based models, based on the establishment of mechanical correspondences between structures of interest (e.g. the liver). The resulting 4D-CT (MRI) images are of good quality when compared to 4D-CT (Fig. 4), and now represent the tissue properties necessary for dose calculations, whilst incorporating the motion information provided by 4D-MRI.

### • 4D dose calculations in radiotherapy

Including the realistic, variable respiratory motion in provided by 4D-CT (MRI) data into 4D dose calculations, opens the door to novel future applications. Based on such data sets, advanced imaging and delivery methods, such as beam tracking (Fig. 5), can now be evaluated and comprehensive 4D planning studies and robustness evaluations performed.





## Summary

4D-MRI, combined with CT data to produce 4D-CT (MRI) data sets, is a powerful new technique for imaging and modeling motion for radiotherapy applications. It allows for accurate modeling of motion variability, an important limitation of current 4D-CT techniques, and will allow in the future for the acquisition of patient specific motion libraries for advanced motion mitigation techniques such as tracking and re-tracking [5, 6].

## References

- 1 von Siebenthal M, Székely G, Gamper U, Boesiger P, Lomax A, Cattin P., 4D MR imaging of respiratory organ motion and its variability., *Phys Med Biol.* 2007 Mar 21;52(6):1547-64. Epub 2007 Feb 16.
- 2 PhD Thesis, von Siebenthal, M. 2008, [http://www.vision.ee.ethz.ch/~organmot/chapter\\_publications.shtml](http://www.vision.ee.ethz.ch/~organmot/chapter_publications.shtml)
- 3 Celicanin Z, Bieri O, Preiswerk F, Cattin P, Scheffler K, Santini F., Simultaneous acquisition of image and navigator slices using CAIPIRINHA for 4D MRI., *Magn Reson Med.* 2014 Feb 24. doi: 10.1002/mrm.25134. [Epub ahead of print].
- 4 Boye D, Lomax T, Knopf A., Mapping motion from 4D-MRI to 3D-CT for use in 4D dose calculations: a technical feasibility study. *Med Phys.* 2013 Jun;40(6):061702. doi: 10.1118/1.4801914.
- 5 Zhang Y., Knopf A, Tanner C, Boye D, Lomax AJ., Deformable motion reconstruction for scanned proton beam therapy using on-line x-ray imaging., *Phys Med Biol.* 2013 Dec 21;58(24):8621-45. doi: 10.1088/0031-9155/58/24/8621. Epub 2013 Nov 21.
- 6 Zhang Y, Knopf A, Tanner C, Lomax AJ., Online image guided tumour tracking with scanned proton beams: a comprehensive simulation study., *Phys Med Biol.* 2014 Nov 24;59(24):7793-7817. doi:10.1088/0031-9155/59/24/7793.

## Contact

Kinga Barbara Bernatowicz  
Paul Scherrer Institute  
5323 Villigen PSI  
Switzerland  
[kinga.bernatowicz@psi.ch](mailto:kinga.bernatowicz@psi.ch)

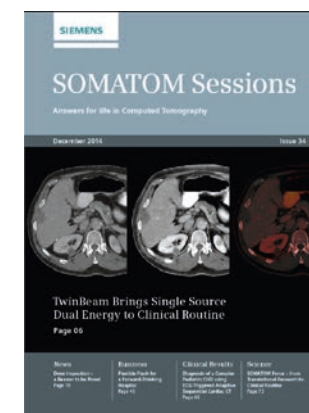
# Siemens Healthcare Publications

Our publications offer the latest information and background for every healthcare field. From the hospital director to the radiological assistant – here, you can quickly find information relevant to your needs.



## Medical Solutions

Innovations and trends in healthcare. The magazine is designed especially for members of hospital management, administration personnel, and heads of medical departments.



## SOMATOM Sessions

Everything from the world of computed tomography.



## AXIOM Innovations

Everything from the world of interventional radiology, cardiology, and surgery.



## MAGNETOM Flash

Everything from the world of magnetic resonance imaging.

## MAGNETOM Flash – Imprint

© 2015 by Siemens AG, Berlin and Munich, All Rights Reserved

## Publisher:

**Siemens AG**  
Medical Solutions  
Business Unit Magnetic Resonance,  
Karl-Schall-Straße 6, D-91052 Erlangen,  
Germany

**Editor-in-chief:** Antje Hellwich  
([antje.hellwich@siemens.com](mailto:antje.hellwich@siemens.com))

**Editorial Board:** Wellesley Were;  
Ralph Strecker; Sven Zühlsdorff, Ph.D.;  
Gary R. McNeal, MS (BME);  
Peter Kreisler, Ph.D.

**Production:** Norbert Moser, Siemens AG,  
Medical Solutions

**Layout:** Agentur Baumgärtner,  
Friedrichstraße 4, D-90762 Fürth, Germany

**Printer:** Rotaplan Offset Kammann Druck GmbH,  
Hofer Straße 1,  
D - 93057 Regensburg, Germany

Note in accordance with § 33 Para.1 of the German Federal Data Protection Law: Despatch is made using an address file which is maintained with the aid of an automated data processing system.

MAGNETOM Flash is sent free of charge to Siemens MR customers, qualified physicians, technologists, physicists and radiology departments throughout the world. It includes reports in the English language on magnetic resonance: diagnostic and therapeutic methods and their application as well as results and experience gained with corresponding systems and solutions. It introduces from case to case new principles and procedures and discusses their clinical potential. The statements and views of the authors in the individual contributions do not necessarily reflect the opinion of the publisher.

The information presented in these articles and case reports is for illustration only and is not intended to be relied upon by the reader for instruction as to the practice of medicine. Any health care practitioner reading this information is reminded that they must use their own learning, training and expertise in dealing with their individual patients. This material does not substitute for that duty and is not intended by Siemens Medical Solutions to be used for any purpose in that regard. The drugs and doses mentioned herein are consistent with the approval labeling for uses and/or indications for that duty and is not intended by Siemens Medical Solutions to be used for any purpose in that regard. The drugs and doses mentioned herein are consistent with the approval labeling for uses and/or indications for that duty and is not intended by Siemens Medical Solutions to be used for any purpose in that regard. The treating physician bears the sole responsibility for the diagnosis and treatment of patients, including drugs and

doses prescribed in connection with such use. The Operating Instructions must always be strictly followed when operating the MR system. The sources for the technical data are the corresponding data sheets. Results may vary.

Partial reproduction in printed form of individual contributions is permitted, provided the customary bibliographical data such as author's name and title of the contribution as well as year, issue number and pages of MAGNETOM Flash are named, but the editors request that two copies be sent to them. The written consent of the authors and publisher is required for the complete reprinting of an article.

We welcome your questions and comments about the editorial content of MAGNETOM Flash. Please contact us at [magnetomworld.med@siemens.com](mailto:magnetomworld.med@siemens.com).

Manuscripts as well as suggestions, proposals and information are always welcome; they are carefully examined and submitted to the editorial board for attention. MAGNETOM Flash is not responsible for loss, damage, or any other injury to unsolicited manuscripts or other materials. We reserve the right to edit for clarity, accuracy, and space. Include your name, address, and phone number and send to the editors, address above.