

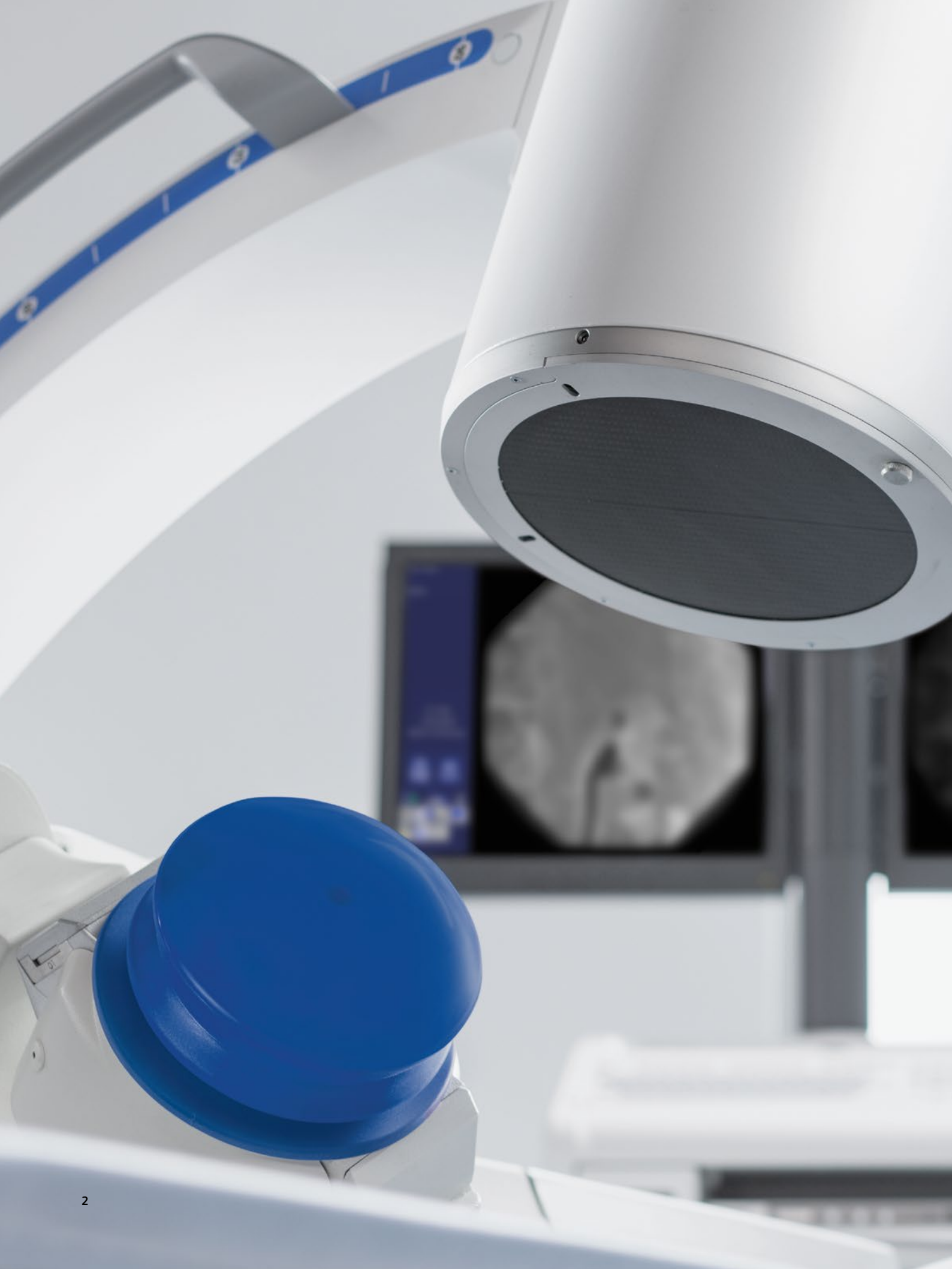
**SIEMENS**

# Modularis

Focus on lithotripsy, be ready for endourology

[siemens.com/modularis](https://www.siemens.com/modularis)





# Meet your specific clinical and budget needs with a modular platform

**In lithotripsy, inefficient shock wave systems lead to higher retreatment and complication rates. This can place clinical institutions in a negative light because patients may need to repeat uncomfortable interventions – which can increase their dissatisfaction.**

Improve patient outcomes in stone treatment by offering gentle, highly effective electromagnetic stone disintegration and viewing even tiny stones in crisp, low-dose images – with Modularis. Its therapy unit excels with high maximum energy for superior stone disintegration, a wide focus for an optimal stone hit rate, and low energy density for gentle treatment.

Modularis is also ideal for endourologic procedures such as transurethral and percutaneous interventions. The Cios mobile C-arms deliver sharp, detailed images supporting fast and confident interventional decisions. Shock wave therapy and ultrasound diagnostics are further examples illustrating how you can benefit from multifunctional room and equipment utilization with the flexible Modularis platform.

Thanks to its modular design, Modularis can also be configured to meet your clinical needs and budget. Numerous variations are possible, from a basic configuration that includes only the therapy unit to the complete platform.

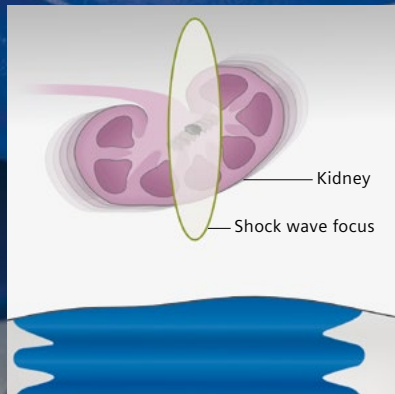
Get all your components from a single reliable partner and take advantage of consistent usability with a centralized hand control, upgradability, and easy servicing.

**Explore Modularis – our multifunctional lithotripsy platform.**

**Effective –**  
high stone-free rate at first treatment

**Multifunctional –**  
ready to cover endourology and more

**Modular –**  
truly flexible to meet your individual needs



The stone always remains in the large focus area, Modularis offers all you need for effective and patient-gentle lithotripsy despite respiration

# Effective – high stone-free rate at first treatment

Many shockwave systems aren't able to ensure both effective stone disintegration and low treatment side effects.

Reduce retreatment and complication rates by increasing treatment effectiveness with a wide focus, high maximum energy, and low energy density.

## Excellent stone disintegration

Perform lithotripsy with a high stone-free rate after first treatment – with the highly effective electromagnetic shock wave system from Modularis. Its formula for success: high maximum energy for excellent stone disintegration, a wide focus for an optimal stone hit rate, and low energy density for gentle treatment. And its highly dynamic energy range with 38 levels supports individual treatment strategies.

## Enhanced patient comfort

Easily adjust the shock wave head to different angles in both under-table and over-table\* therapy position. This allows you to set the exact position needed – and your patients can lie in a comfortable supine position at all times.

## Accurate stone localization and monitoring

With a mobile C-arm and the ACUSON X300 PE ultrasound system, Modularis supports fast and convenient stone localization and monitoring. Its ergonomic gel position also allows contact-free stone localization and easy gel application without air bubbles – for higher treatment efficiency and patient comfort.

## One platform, one control

Modularis makes system handling easy. With all components from a single source, you can operate them with just one central hand control – for a safe and easy workflow. For example, during stone localization, you can position the motorized C-arm with the push of a button. And the collision protection makes sure that the C-arm won't hit the table.

## Easy and efficient reporting

ESWL data management is easy with the LithoReport option. The system automatically stores all relevant shock wave parameters together with patient data, diagnosis, and therapy results in a comprehensive report.

\* Option



Set the angle for the optimal therapy head position – in under-table and over-table therapy positions



The multifunctional platform Modularis lets you perform percutaneous interventions ...



... transurethral and transrectal procedures ...

# Multifunctional – ready to cover endourology and more

Endourology is gaining higher importance in urinary stone treatment. Often, the existing equipment isn't flexible enough to support this trend – leading to insufficient room and equipment utilization.

Increase utilization with a wide range of applications – from endourologic interventions and ultrasound diagnostics to lithotripsy and extracorporeal shock wave therapy.

## Ideal for endourology procedures

Modularis offers all the components you need for endourologic interventions. You can clearly see anatomical details over the entire field of view at low dose with the Cios mobile C-arm. The sharp, detailed images support fast and confident interventional decisions. And with the ACUSON X300 PE ultrasound system next to your C-arm, you have all images available at a glance.

## Flexible for a variety of applications

The multifunctional platform Modularis is ideal for a broad clinical spectrum:

- Extracorporeal shock wave lithotripsy (ESWL) in under-table and over-table\* therapy positions for urological and gastroenterological stone treatment in the kidney, ureter, and bile duct
- Extracorporeal shock wave therapy (ESWT) for orthopedic applications\*\* like pain therapy, pseudarthrosis, and superficial plaques
- Percutaneous interventions like percutaneous nephrostomy (PCN) and percutaneous nephrolithotomy (PCNL)
- Transurethral procedures like ureterorenoscopy (URS), retrograde pyelography, ultrasound diagnostics, and double-J stent insertion

## More than a stationary solution

The mobile design of Modularis lets you optimize system utilization. All platform members have large wheels for easy transportation, which also allows transmobile use between clinics. Laser-guided alignment makes system setup fast and easy: simply match the laser crosshairs with the line markings on the table and C-arm bases. And with its plug-and-play functionality, Modularis is immediately ready for use.

\* Option

\*\* This application use is not approved for every country



... ESWT ...



... and ultrasound diagnostics



Laser-guided alignment for easy adjustment

# Modular – truly flexible to meet your individual needs

Whether you consider the high cost of stationary lithotripsy systems or the functional limitations of modular ones – the return on assets is insufficient either way.

Improve your institution's financial sustainability by adapting Modularis to your clinical needs and budget and having all the components you need – from the therapy unit, patient table, and ultrasound system to the mobile C-arm – from a single reliable partner.

## Wide range of configurations

The modular design of Modularis lets you flexibly adapt the platform to meet your individual clinical demands and budget. Simply choose the components you need: You can decide, for example, for a basic configuration that includes just the therapy unit, add a patient table, or get the entire platform. What's more, you can even connect existing third-party mobile C-arms.

## Various mobile C-arms available

Choose your preferred mobile C-arm from Siemens Healthcare that meets your clinical needs and budget – Cios Connect or Cios Select. Both fulfill our high stan-

dards, from image quality and low dose to an ergonomic and robust system design. An intuitive user interface, our one-button-to-image philosophy, and color-coded axes, brakes, and handles make system operation easy – and keep training effort low.

## Broad portfolio of accessories

A broad portfolio of urological accessories complements the offering. Choose from leg supports, patient arm rests, shoulder supports, wrist restraints, anesthesia screen holders, infusion bottle holders, tabletop extensions, drain pans, and much more.

## A reliable partner at your side

With Modularis, you can get all the components you need – from the therapy unit, patient table, mobile C-arm, and ultrasound system – from a single reliable partner. This translates into many benefits for you, including a unique operating concept based on the centralized hand control, smooth upgradability of your platform from small to large, and easy servicing and maintenance with predictable costs.

Modularis Variostar only



Modularis Variostar + table

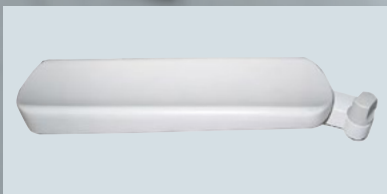


Modularis system package



Adapt Modularis to meet your clinical needs and budget





A selection of the broad range of accessories available

# Modularis – a clinical image gallery



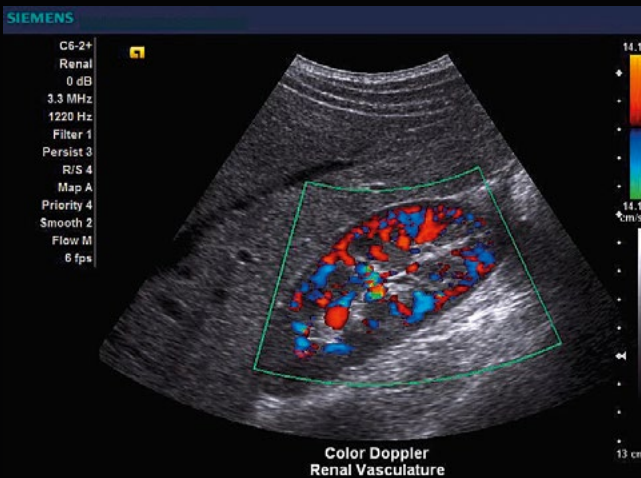
ACUSON X300 PE

## ACUSON X300 PE

### Radiation-free imaging with ultrasound

The ACUSON X300 PE offers excellent image quality for a broad spectrum beyond ultrasound stone localization – including renal, bladder, testicular, and prostate imaging.

- Excellent image quality
- Tissue Harmonic Imaging (THI) for reduced clutter and improved contrast resolution



## Cios Connect, Cios Select

### Clear images for sound decisions

Cios Connect and Cios Select offer advanced image intensifier technology based on a long line of well-known, proven mobile C-arms from Siemens Healthcare.

- Clear images at high resolution over the entire field of view, thanks to a high-end CCD camera and superior optics
- Keep distortions to a minimum with mu-metal shielded 23 cm (9") image intensifier

### Low-dose images with IDEAL imaging chain

Both C-arms have our IDEAL (Intelligent Dose Efficiency Algorithm) dose reduction algorithm built in – for outstanding image quality at very low dose.

- Analyzes images during acquisition
- Automatically adapts dose, contrast, and brightness

### Advanced lithotripsy with Cios Connect

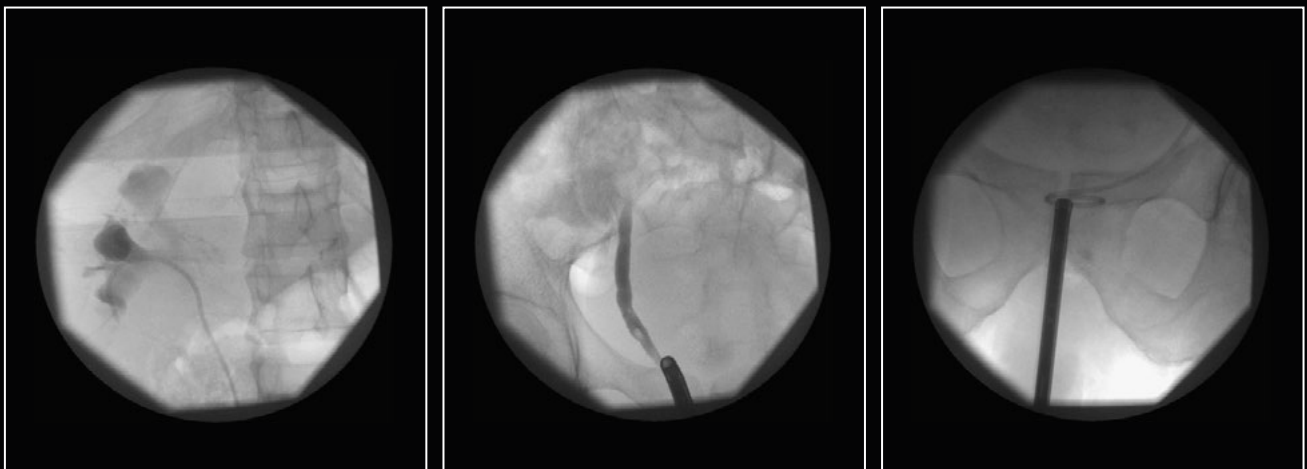
- LithoReport – reports with all relevant ESWL data
- Motorized angulation – C-arm positioning at the push of a button
- Integrated operating concept – based on the centralized hand control



Cios Connect



Cios Select



X-ray images were acquired with a predecessor C-arm system

# Modularis

Focus on lithotripsy, be ready for endourology

## C-arm

Choose from a family of C-arms from Siemens Healthcare or connect a 3<sup>rd</sup>-party C-arm

## Ultrasound system

ACUSON X300 PE for radiation-free stone localization and monitoring

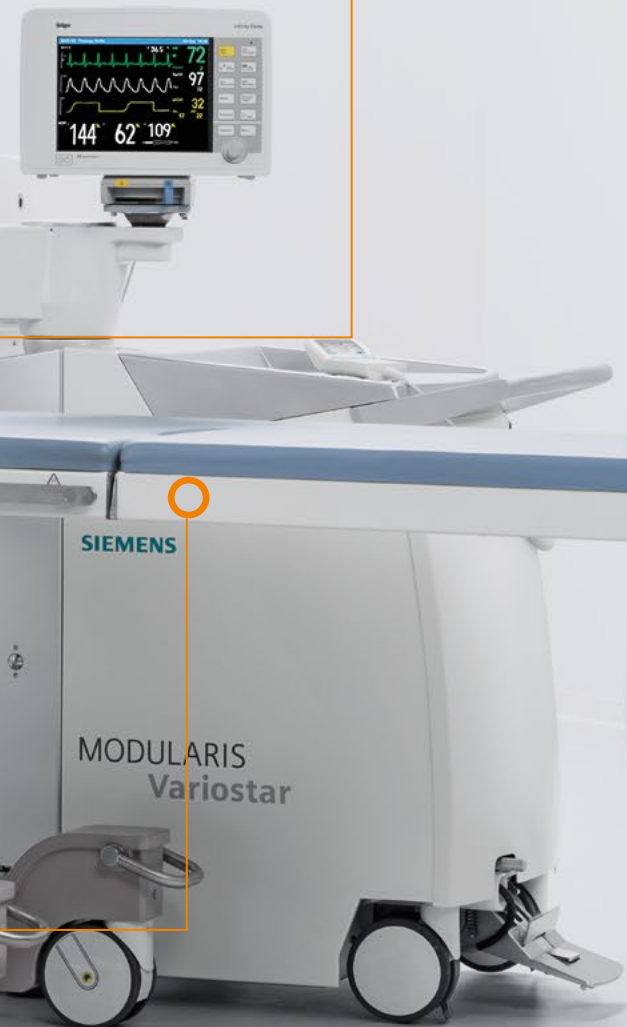
## Patient table

Constant working height at perineal end during table tilting



**Therapy unit**

Excellent stone disintegration in under-table and over-table therapy positions



**Central hand control**

Just one control for the entire Modularis platform



# Experience why detail matters

**Around the world, Siemens Healthcare is known for innovation power and technology leadership. All our medical systems are backed by more than 125 years of experience.**

All Modularis components have our in-depth expertise in medical technologies built in and let you benefit from our R&D innovations. Our wealth of experience also forms the basis for the details that matter. You can enhance patient satisfaction with a high stone-free rate at first treatment. Furthermore, patients can always lie in a comfortable supine treatment position. As a multifunctional platform, Modularis lets you broaden your clinical portfolio from lithotripsy to endourology interventions, ultrasound diagnostics, shock wave therapy, and more. The central hand control translates into easy system operation, allowing you to concentrate on your patients. And thanks to its modular design, Modularis always meets your clinical needs and budget.

**Modularis: because detail matters.**

## **Free yourself from technical worries at fixed cost**

Cover all service needs of your Modularis with a Performance Plan TOP from Siemens Healthcare. It already includes service parts and corrective maintenance, and you can opt to add special components to your service agreement. Compare your revenue loss from a system downtime with your expenditure for a service contract that assures the quickest possible system recovery at defined costs. In other words, investing in a Performance Plan TOP truly pays off.

## **An investment that pays off**

Modularis suits both your clinical and budget needs. All platform members fulfill our high quality demands. You can select the components you need – a highly effective electromagnetic shock wave system, an advanced mobile C-arm, a proven ultrasound system, and a comfortable patient table – and even connect existing third-party mobile C-arms. With the multifunctional platform, room usage also becomes more flexible. These and other features make Modularis a smart and safe investment.

MODULARIS

Variostar

Modularis is not commercially available in all countries. Due to regulatory reasons its future availability cannot be guaranteed. Please contact your local Siemens organization for further details.

On account of certain regional limitations of sales rights and service availability, we cannot guarantee that all products/services/features included in this brochure are available through the Siemens sales organization worldwide. Availability and packaging may vary by country and are subject to change without prior notice.

The information in this document contains general descriptions of the technical options available and may not always apply in individual cases.

Siemens reserves the right to modify the design and specifications contained herein without prior notice. Please contact your local Siemens sales representative for the most current information.

In the interest of complying with legal requirements concerning the environmental compatibility of our products (protection of natural resources and waste conservation), we may recycle certain components where legally permissible. For recycled components we use the same extensive quality assurance measures as for factory-new components.

Any technical data contained in this document may vary within defined tolerances. Original images always lose a certain amount of detail when reproduced.

#### **Siemens Healthcare Headquarters**

Siemens Healthcare GmbH  
Henkestr. 127  
91052 Erlangen  
Germany  
Phone: +49 9131 84-0  
[siemens.com/healthcare](http://siemens.com/healthcare)