

SIEMENS

Reprint

Case Study LiverLab

Stephan Kannengiesser, Ph.D.; Radhouene Neji, Ph.D.; Xiaodong Zhong, Ph.D.
Reprint from the customer magazine MAGNETOM Flash, March 2014, Pages 18–19

Answers for life.

Case Study LiverLab

Stephan Kannengiesser, Ph.D.¹; Radhouene Neji, Ph.D.¹; Xiaodong Zhong, Ph.D.²

¹Siemens Healthcare, MR Oncology Applications, Erlangen, Germany

²Siemens Healthcare, MR R&D Collaborations, Atlanta, GA, USA

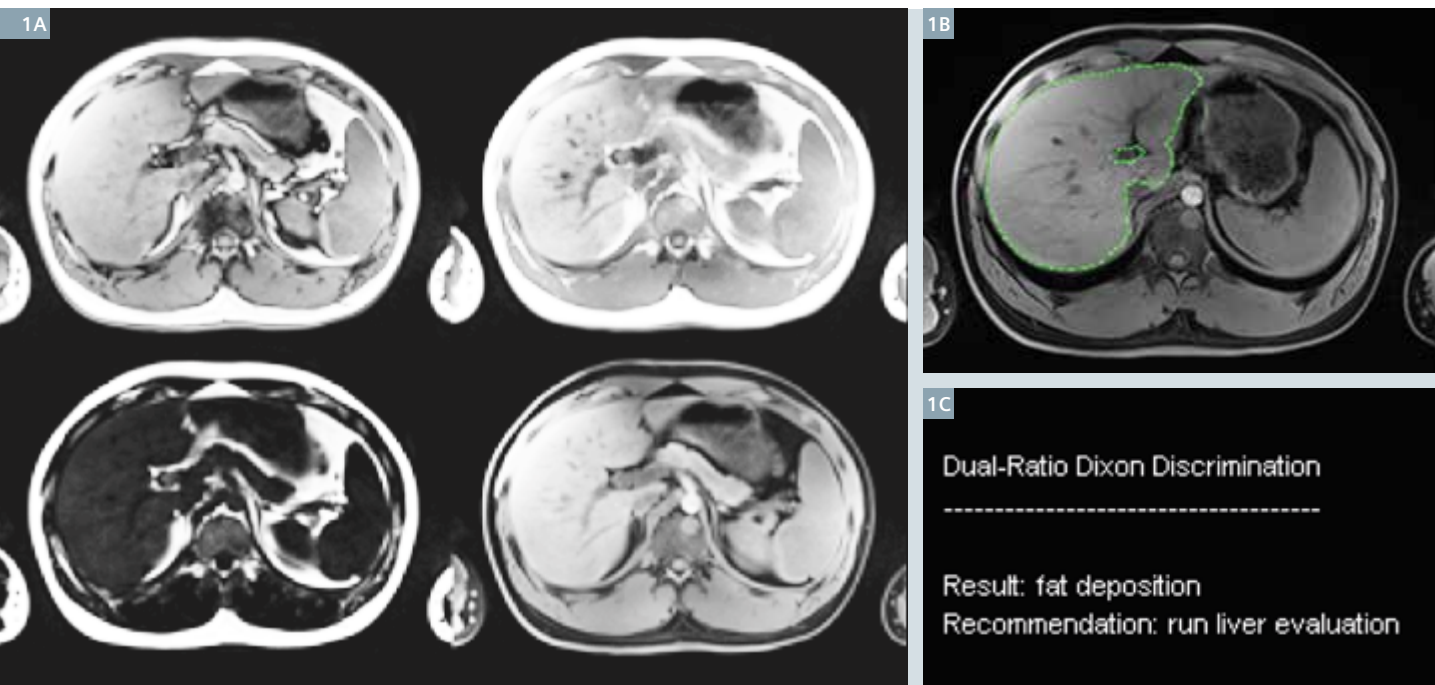
Measurement data of a 22-year-old male volunteer with elevated liver fat signal, acquired on a 3T MAGNETOM Skyra system, were processed with the *syngo* MR E11A implementation of LiverLab.

The measurement program includes a regular opposed-phase / in-phase two-point Dixon protocol with water/fat separation. The First look Dixon processing first performs a liver segmentation on the water series, and then a voxel classification according to the dual-ratio Dixon signal discrimination [1]. This leads to the conclusion of fat deposition and the recommendation to run additional quantification (Fig. 1).

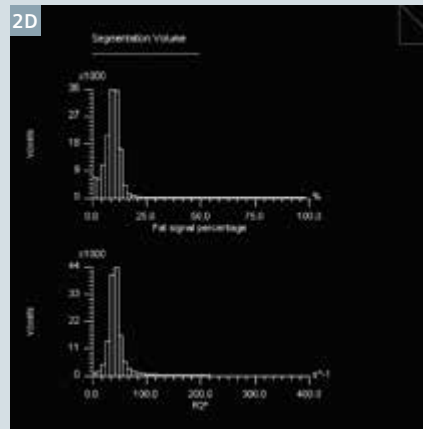
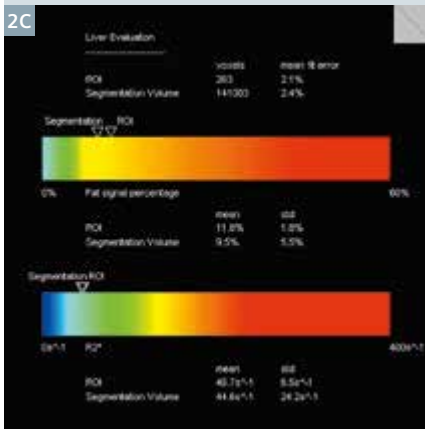
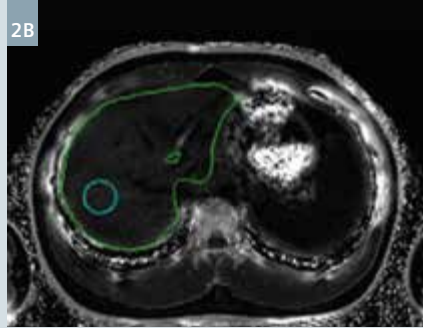
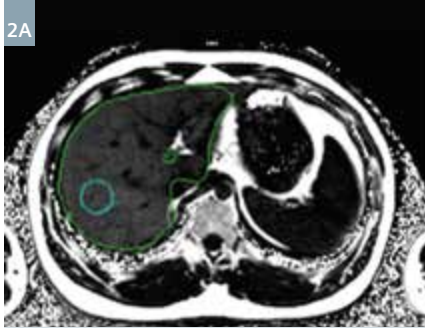
The *syngo* MR E11A Abdomen Dot framework uses this recommendation to implement a decision point,

through which the user can add the quantification protocols to the measurement queue. In addition, the Dot engine allows specifying an inline region-of-interest (ROI) during protocol planning. The multi-echo VIBE Dixon [2] produces inline parameter maps of fat signal percentage (proton density fat fraction, PDFF) and effective $R2^*$, with overlays of the liver segmentation region and pre-planned ROI. Statistics (mean, std) of PDFF and effective $R2^*$ over the ROI and segmentation region are calculated inline, and are output as a report sheet, showing values both in text form and as color bars. Likewise, histograms are produced for PDFF and effective $R2^*$ over the segmentation region (Fig. 2).

A HISTO (high-speed T2-corrected multi-echo single voxel spectroscopy, [3]) protocol was also run, with 5 TEs ranging from 12 to 72 ms, and a voxel of size $3 \times 3 \times 3 \text{ cm}^3$. The HISTO inline processing integrates over the water and fat parts of the spectrum for the individual echoes, and performs a T2 relaxation correction. Results include a fat signal percentage and the $R2$ of water ($R2_{\text{water}}$), which are displayed in textual and color bar formats. A spectrum of the shortest TE and a list of quantification values for the individual echoes are added for quality control of the signal fitting. The inline analysis for this case reveals similar findings as the multi-echo VIBE Dixon (Fig. 3).

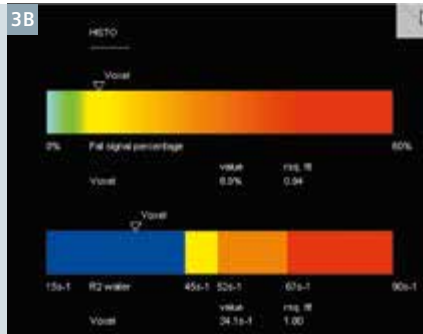


1 First look Dixon (Screening Dixon) results: (1A) opposed-phase, in-phase, fat, and water images, (1B) liver segmentation, (1C) report sheet.



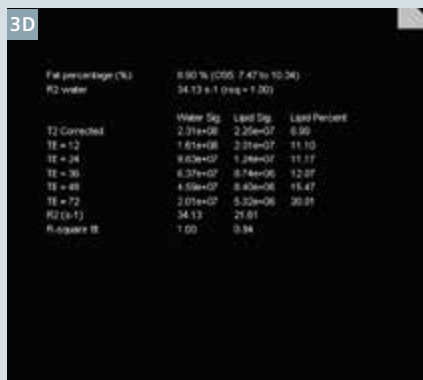
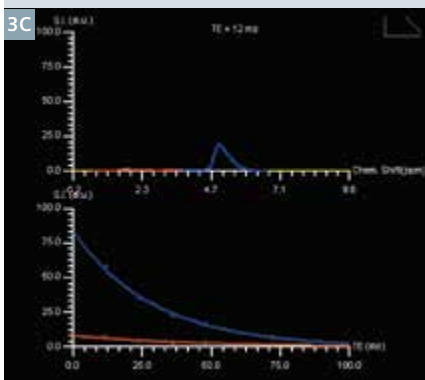
2

Multi-echo Dixon results: (2A) PDFF and (2B) effective R2* maps with overlays of the inline liver segmentation region (green) and inline ROI (cyan). (2C) Inline statistics (mean, std) of PDFF and effective R2* over ROI and segmentation region as text and color bar. The mean ROI values are fat signal percentage 11.8% and effective R2* 46.7 s⁻¹. (2D) Histograms of PDFF and effective R2* over the segmentation region.



3

HISTO results: (3A) Voxel location (from the spectroscopy task card), (3B) report sheet. The values are fat signal percentage 8.9%, R2_{water} 34.1 s⁻¹. (3C) Spectrum at shortest TE, (3D) list of individual echo values. For comparison, a manually drawn ROI on the multi-echo Dixon parameter maps, co-localized with the HISTO voxel position shown in A), reveals PDFF 8.9%, and effective R2* 44.3 s⁻¹.



References

- Bashir MR, Merkle EM, Smith AD, Boll DT. Hepatic MR imaging for in vivo differentiation of steatosis, iron deposition and combined storage disorder: Single-ratio in/opposed phase analysis vs. dual-ratio Dixon discrimination. *Eur J Radiol* 2012;81(2):e101-e109.
- Zhong X, Nickel MD, Kannengiesser SA, Dale BM, Kiefer B, Bashir MR. Liver fat quantification using a multi-step adaptive fitting approach with multi-echo GRE imaging. *Magn Reson Med* 2013; doi: 10.1002/mrm.25054. [Epub ahead of print]
- Pineda N, Sharma P, Xu Q, Hu X, Vos M, Martin DR. Measurement of hepatic lipid: high-speed T2-corrected multiecho acquisition at 1H MR spectroscopy – a rapid and accurate technique. *Radiology* 2009; 252:568–576.



Contact

Stephan Kannengiesser
Siemens Healthcare
MR PI TIO ONCO
Postbox 32 60
91050 Erlangen , Germany
Phone: +49 (1525) 4689516
stephan.kannengiesser@siemens.com

On account of certain regional limitations of sales rights and service availability, we cannot guarantee that all products included in this brochure are available through the Siemens sales organization worldwide. Availability and packaging may vary by country and is subject to change without prior notice. Some/All of the features and products described herein may not be available in the United States.

The information in this document contains general technical descriptions of specifications and options as well as standard and optional features which do not always have to be present in individual cases.

Siemens reserves the right to modify the design, packaging, specifications and options described herein without prior notice. Please contact your local Siemens sales representative for the most current information.

Note: Any technical data contained in this document may vary within defined tolerances. Original images always lose a certain amount of detail when reproduced.

Local Contact Information

Siemens Medical Solutions USA, Inc.
51 Valley Stream Parkway
Malvern, PA 19355-1406
USA
Phone: +1-888-826-9702
www.usa.siemens.com/healthcare

Global Business Unit

Siemens AG
Medical Solutions
Magnetic Resonance
Henkestr. 127
DE-91052 Erlangen
Germany
Phone: +49 9131 84-0
www.siemens.com/healthcare

Global Siemens Headquarters

Siemens AG
Wittelsbacherplatz 2
80333 Muenchen
Germany

Global Siemens Healthcare

Headquarters
Siemens AG
Healthcare
Henkestrasse 127
91052 Erlangen
Germany
Phone: +49 9131 84-0
www.siemens.com/healthcare

Legal Manufacturer

Siemens AG
Wittelsbacherplatz 2
DE-80333 Muenchen
Germany