

When you and your patient need to be sure, count on us.  
Call us to learn more.



{Name of Facility Hospital Name}  
{Address Street Address}  
{Address #2 Street Address}  
{Address City}, {STATE} {Zip}  
{000-000-0000}  
{xxxxxxxxxxxxxxxxx@XXXXXXXXXXXX.com}

A91DI-XP-17148-P1-4A00



With wide-angle breast tomosynthesis,  
breast cancer has no place to hide



## The new perspective in mammography

### Wide-angle 3D breast tomosynthesis

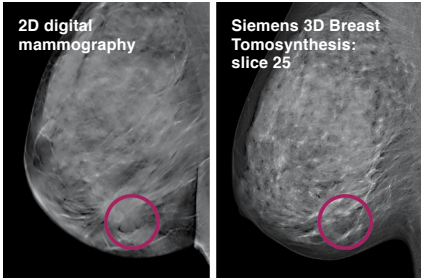
**One in eight women will be diagnosed with breast cancer in her lifetime.**

The very best defense is early detection, made possible through an annual screening mammogram.

At {Name of Facility Hospital Name Lorem Ipsum Solor Sit}, we commit ourselves every day to matching our compassionate breast care with state-of-the-art technology.

Technology that gives every woman in {INSERT COMMUNITY NAME} her best chance for an early and accurate diagnosis.

Now, we're proud to offer new wide-angle 3D breast tomosynthesis. It's a new approach to mammography that helps us examine breast tissue layer by layer, giving breast cancer no place to hide.



**The game-changer in mammography**

Up to 30% of cancers go undetected by standard mammography. And 52-76% of cancers are missed in dense breast tissue, where tumors are more difficult to identify.

That changes with wide-angle breast tomosynthesis.

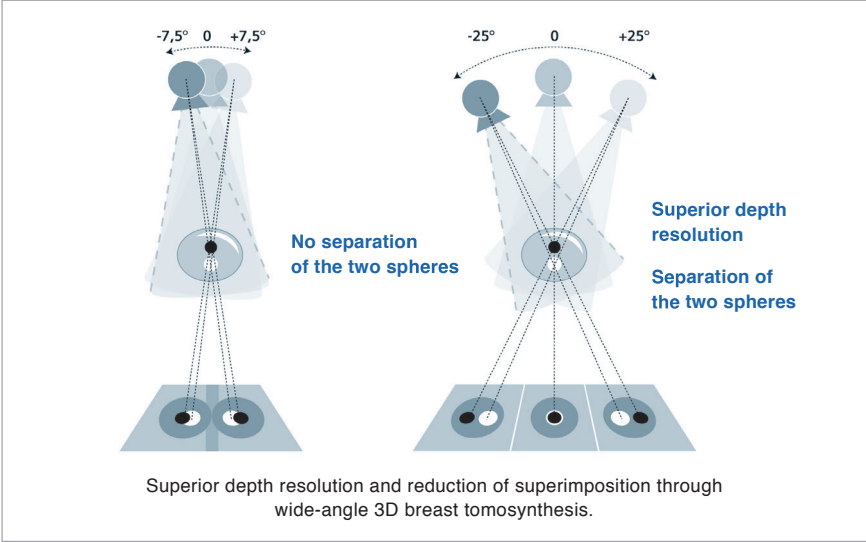
## Introducing a new standard in breast care

3D breast tomosynthesis is becoming a new standard in mammography. It helps doctors see breast tissue in greater depth and clarity.

Traditionally, mammograms have come from digital screening that produces 2D pictures of the breast. But overlapping and dense breast tissue make it hard for 2D pictures to show microcalcifications that suggest early signs of cancer.

True Breast Tomosynthesis helps us solve that problem. It's a special mammogram that offers a better view of breast tissue than 2D mammography alone.

As the X-ray tube moves through a 50° arc, it takes 25 images of the breast. The images are reconstructed in 3D and displayed as slices for better separation of tissue layers and more visibility of lesions.



**Be sure. True Breast Tomosynthesis.**

Be sure about your mammography results by choosing the new standard in breast cancer detection.

Ask about True Breast Tomosynthesis. Because you can detect more in 3D.