

SIEMENS



[siemens.com/multimobil](https://www.siemens.com/multimobil)

# The economical solution in mobile X-ray imaging

Multimobil 10



# Meet your specific clinical and budget needs with Multimobil 10

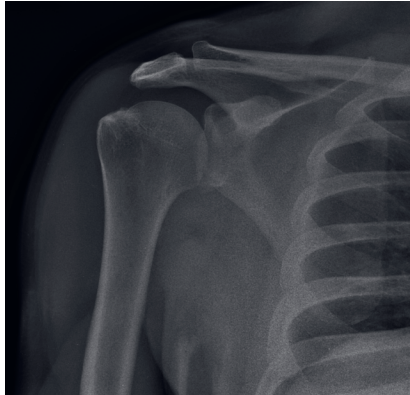
**Hospitals require cost-effective and proven systems which reliably support daily operations.**

Siemens sets standards with Multimobil 10, a versatile and highly economical mobile X-ray system. It is powered by high frequency technology that can generate imaging power of up to 10 kW.

Mobile imaging couldn't be easier: plug Multimobil 10 into any grounded wall socket, switch it on and you are ready to start the examination.

Developed with a compact and lightweight design and the counterbalanced arm system, Multimobil 10 improves clinical workflow capabilities and allows for high flexibility in patient positioning – from recumbent, sitting, or in any position in between.

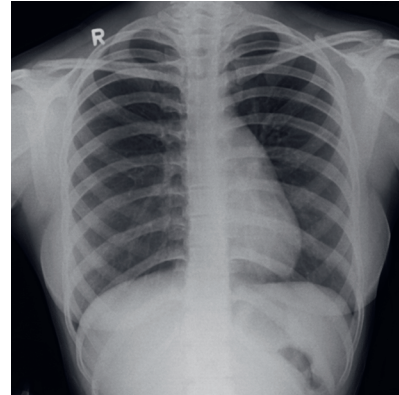
**Multimobil 10 is the entry level analog mobile X-ray system, economic and easy to use.**



Shoulder a.p.



Knee a.p.



Chest a.p.

# A mobile X-ray system that satisfies all your requirements

## High image quality

The self-calibrating and high imaging output of Multimobil 10 – up to 10 kW and 125 mAs – enables exposure times down to 4 ms, virtually eliminating any motion blur. The high frequency technology works with lower factors than those required in conventional generators to deliver the same dose. Also, the exposure times are reduced significantly.

Multimobil 10 lets you benefit from high consistency in exposures and image quality.

## Comfortable operation and maneuvering

The streamlined, easy-to-use operator console offers fast access to all functions. After the individual settings of the kV and mAs have been carried out, Multimobil 10 calculates the maximum mA and minimum time for shortest possible exposure times, virtually eliminating any motion blur.

A convenient and safe parking position for the freely rotatable unit's head ensures higher safety, especially when the system is being moved. Thanks to the short wheel-base of the system, high maneuverability is ensured.

## Wide operation range

Multimobil 10 has set a standard in performing consistently under extreme operating conditions. It delivers constant imaging power even when the power supply voltage falls to 180 V or rises to 265 V.

It can be used in a variety of clinical disciplines, such as for instant bedside imaging, intensive care unit, neonatal intensive care unit, operating room, sports medicine and even in veterinary medicine.

Optional available with our patient friendly Zebra design.



Easy-to-use operator console



Patient friendly Zebra design

Multimobil 10 is not commercially available in all countries. Due to regulatory reasons its future availability cannot be guaranteed. Please contact your local Siemens organization for further details.

On account of certain regional limitations of sales rights and service availability, we cannot guarantee that all products/services/features included in this brochure are available through the Siemens sales organization worldwide. Availability and packaging may vary by country and are subject to change without prior notice.

The information in this document contains general descriptions of the technical options available and may not always apply in individual cases.

Siemens reserves the right to modify the design and specifications contained herein without prior notice. Please contact your local Siemens sales representative for the most current information.

In the interest of complying with legal requirements concerning the environmental compatibility of our products (protection of natural resources and waste conservation), we may recycle certain components where legally permissible. For recycled components we use the same extensive quality assurance measures as for factory-new components.

Any technical data contained in this document may vary within defined tolerances. Original images always lose a certain amount of detail when reproduced.

#### **Siemens Healthineers Headquarters**

Siemens Healthcare GmbH  
Henkestr. 127  
91052 Erlangen  
Germany  
Phone: +49 9131 84-0  
[siemens.com/healthineers](https://www.siemens.com/healthineers)