

Sequential quantitative SPECT/CT following therapeutic administration of ^{177}Lu DOTATATE in a patient with liver metastases from neuroendocrine tumor

.....

By Peter Bartenstein, MD
Ludwig Maximilians University, Munich, Germany

History

A 69-year-old male with intestinal carcinoid tumor with multiple liver metastases, confirmed using ^{68}Ga -DOTATOC PET/CT imaging, was referred for radionuclide therapy with ^{177}Lu DOTATATE. In view of the tracer-avid primary tumor and liver metastases demonstrating high uptake of somatostatin receptors seen on PET/CT, the patient was treated with 7.4 GBq of ^{177}Lu DOTATATE as an intravenous infusion along with a standard regime of amino acid administration prior to and during therapy. Two hours following administration of the first therapeutic dose of ^{177}Lu DOTATATE, the patient underwent a SPECT/CT study, which was followed by subsequent SPECT/CT studies performed 24, 48, and 72 hours after injection, in order to assess tracer concentration in the tumor and critical organs such as the kidneys, across 4 time points. The study was performed on a Symbia™ T16 SPECT/CT system, which had been calibrated using a

NIST-traceable ^{75}Se point source of known activity for accurate quantification of ^{177}Lu radioactivity concentration. SUV measurements can subsequently be performed using quantitative SPECT/CT reconstructions of patient scans following ^{177}Lu radiopharmaceutical administration.

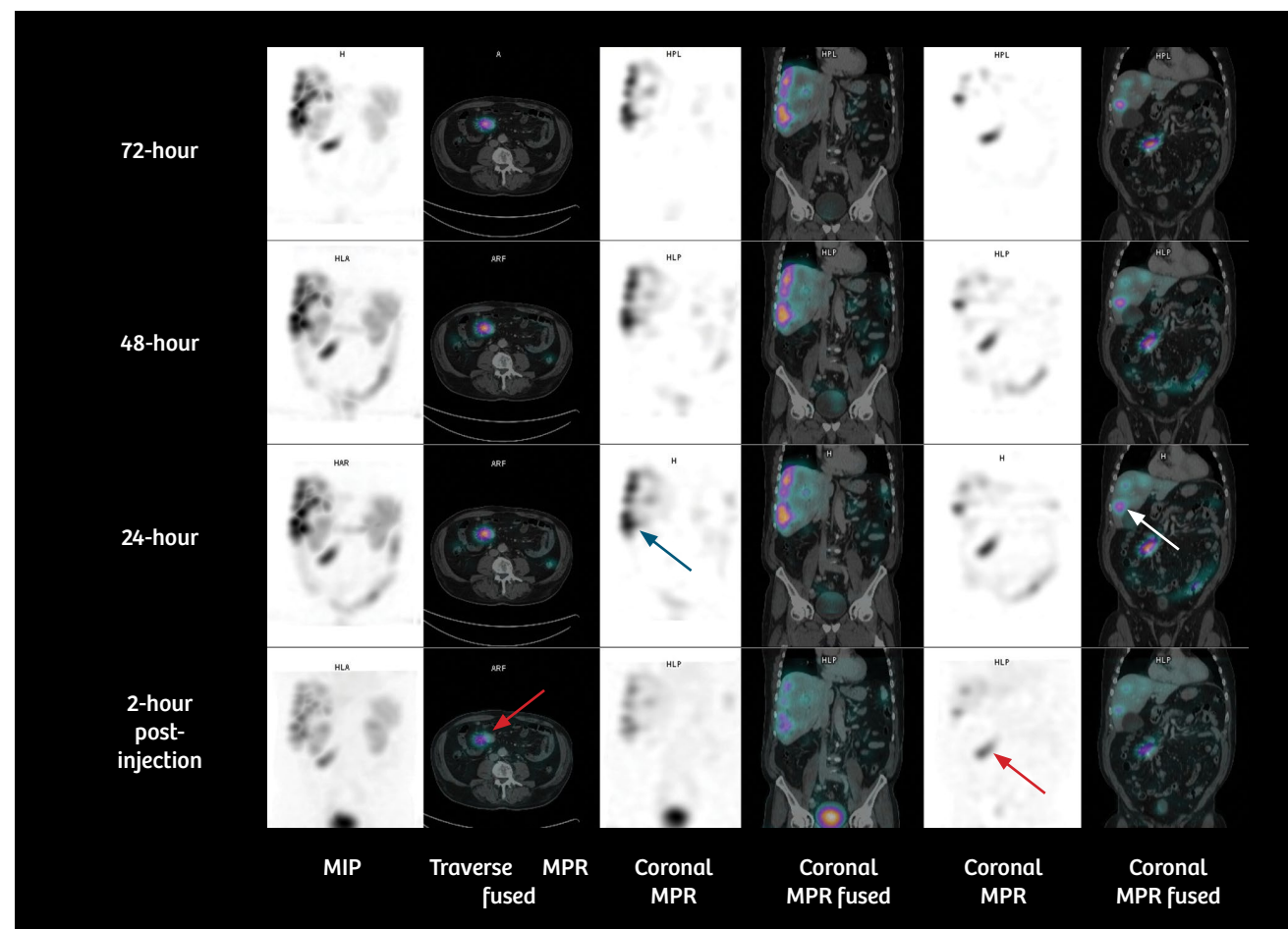
SPECT acquisition was performed using 60 stops with 32 seconds per stop. The study was reconstructed using xSPECT™* ordered subset gradient conjugate method (OSCGM) reconstruction, incorporating attenuation and scatter correction. Volume of interest (VOI) was generated using fused SPECT/CT images over the tumor and critical organs, such as kidneys and liver, were evaluated to assess volumes and absolute tracer concentration within the VOIs as well as SUV.

Diagnosis

Visual inspection of four sequential time point SPECT/CT scans (*figures 1*

and 2) demonstrates high tracer uptake in the primary intestinal tumor and multiple liver metastases with progressive increase in uptake by 24 hours. Very slow clearance is evident in substantial remaining tracer uptake by 72 hours. This suggests high initial uptake and slow washout in the tumor, which indicates the possibility of high tumor dose delivery due to increased tumor tracer retention time. The kidneys, however, show normal cortical uptake and progressive washout without pelvicalyceal tracer retention. Fast clearance suggests lower renal tracer retention time with possibility of low renal dose.

Quantitative SPECT/CT enabled SUV-based evaluation of changes in tracer concentration in the kidney and the tumor. It also allows generation of VOIs, including the tumor as well as critical organs, such as the kidney, liver, and spleen, in order to estimate absolute tracer concentration in the VOI in kBq/mL. Tumor, kidney, and liver volumes can be derived from VOI



1 Four sequential time point SPECT/CT scans were performed following 7.4 GBq ¹⁷⁷Lu DOTATATE administration in a patient with intestinal carcinoid tumor with multiple liver metastases. The functioning primary intestinal carcinoid tumor shows avid tracer uptake (red arrow). Multiple functioning tracer-avid liver metastases (white/blue arrow) are also visualized. Visual inspection of sequential SPECT and fused images suggests gradual progression in the uptake in the primary as well as liver lesion between 2 and 24 hours, with a slight decrease in 48- and 72-hour images. A considerable amount of tracer clearance in the colon is visualized by 24 hours, with a progressive increase in the 48-hour image.

Data courtesy of Ludwig Maximillians University, Munich, Germany.

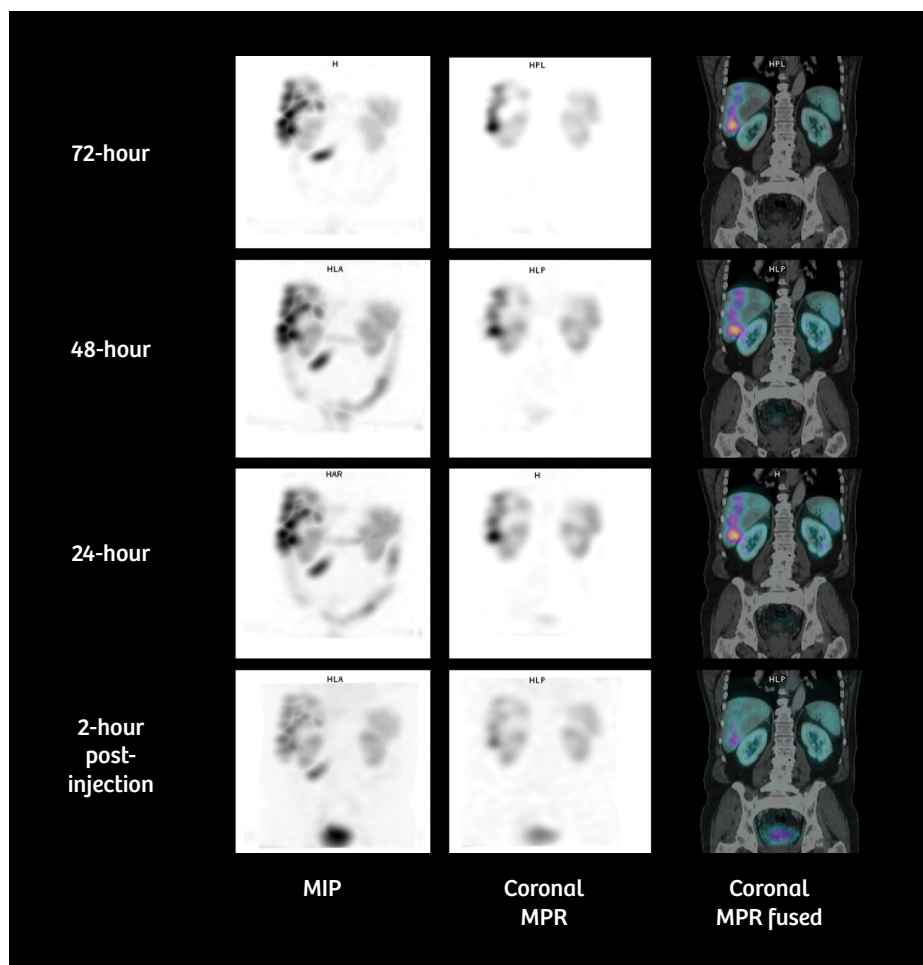
generated from fused SPECT/CT images with high accuracy. Tracer concentration from individual VOI could be derived from quantitative SPECT, leading to estimation of absolute tracer concentration within those VOI. Such estimations across 4 time points can be subsequently converted to the percentage of administered radioactivity concentration and fed into dosimetry software for calculation of effective dose to critical organs and the tumor.

The sequential quantitative SPECT/CT data and the estimated absolute tracer

concentration and volumes of the left and right kidney, liver, spleen and two large liver metastases were processed by experimental dosimetry software to yield dose estimates. Four time-point studies were accurately registered to each other and VOIs generated and aligned across multiple time points to accurately assess quantitative changes in absolute tracer concentration across time and yield time activity curves.

It is clear from the dosimetry tables that the left and right renal dose (approximately 3.2 Gy each) is within expected levels, considering the initial

therapeutic dose administered. The tumor dose in one large liver lesion is calculated to be 16.2 Gy, which suggests the possibility of significant cumulative dose to the tumor and favorable response. In view of the 23 Gy threshold of total renal dose across multiple therapy cycles generally accepted in radionuclide therapy¹, the dose to both the kidneys calculated from this dosimetry evaluation following the initial therapy dose, suggests the possibility of two more therapies of similar doses of ¹⁷⁷Lu DOTATATE without exceeding the threshold. However, in view of the tumor response to the initial



- 2 Coronal MPR SPECT and fused images at the plane of both kidneys show normal cortical uptake without pelvicalyceal stasis and normal washout by 72 hours.

Data courtesy of Ludwig Maximilians University, Munich, Germany.

therapy, subsequent therapies also require proper post-therapy imaging and dosimetry evaluation to ensure accurate calculation of the tumor and renal dose and adjustment of the amount and number of therapies, accordingly.

Comments

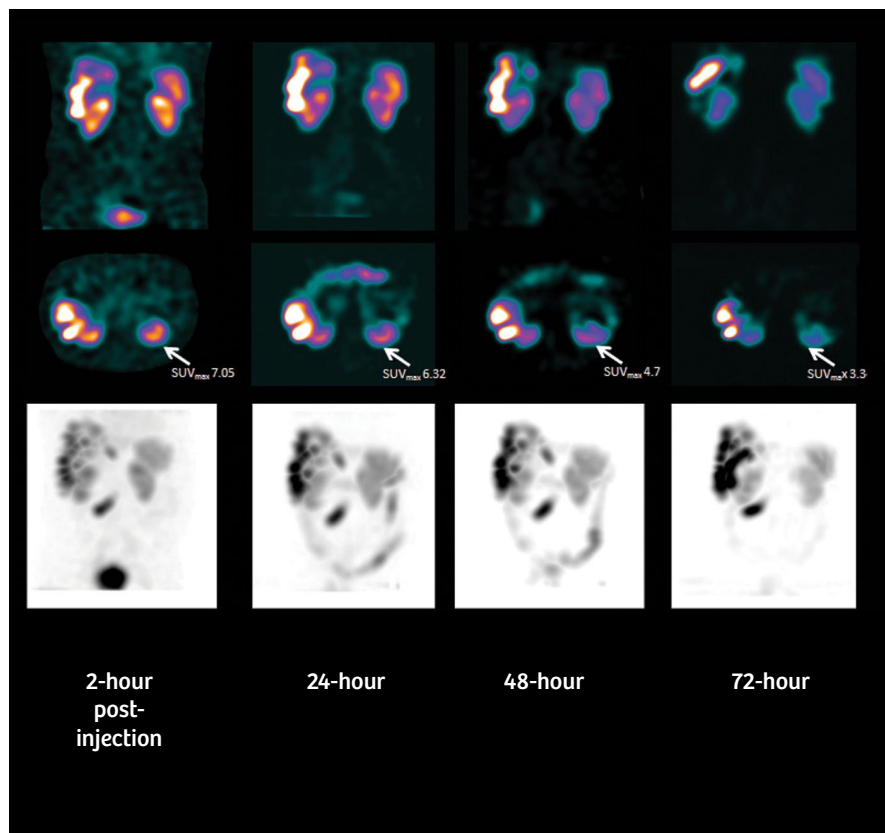
Most carcinoid tumors express somatostatin receptors, in particular SST2 receptors, which results in high uptake of radiolabeled somatostatin analogs, such as ^{177}Lu DOTATATE, which is used for treatment of patients with advanced metastatic neuroendocrine tumors (NETs) with peptide receptor radionuclide therapy (PRRT). Apart from β emission, ^{177}Lu DOTATATE is also a gamma emitter which allows planar and SPECT

imaging to be performed following therapeutic dose, enabling demonstration of tumor uptake and estimation of tumor and critical organ dose along with prediction of therapeutic efficacy and need for and feasibility of multiple therapies. The standard therapy approach with ^{177}Lu DOTATATE is for 4 cycles to be administered at 8-11 week intervals, with each therapy dose being 7-7.4 GBq. More cycles are added based on tumor and critical organ dosimetry and toxicity to bone marrow and kidney, evaluated by serial platelet counts and serum creatinine and creatinine clearance. Cumulative bone marrow and renal dose are the limiting factors concerning the number of therapy cycles and total dose delivered.

The objective is to give as many therapy doses as possible without crossing the cumulative renal dose limit in order to deliver the highest possible dose to the tumor without causing renal toxicity.

Although concomitant amino acid infusion reduces the renal toxicity during PRRT, strict adherence to the practice of limiting cumulative renal dose to 23 Gy or less is currently the accepted approach to ensuring absence of significant renal toxicity during PRRT.¹

In view of the potential impact of renal and bone marrow toxicity on the decision of the number of therapies of ^{177}Lu PRRT, the accuracy of dosimetry for assessment of the radiation dose to

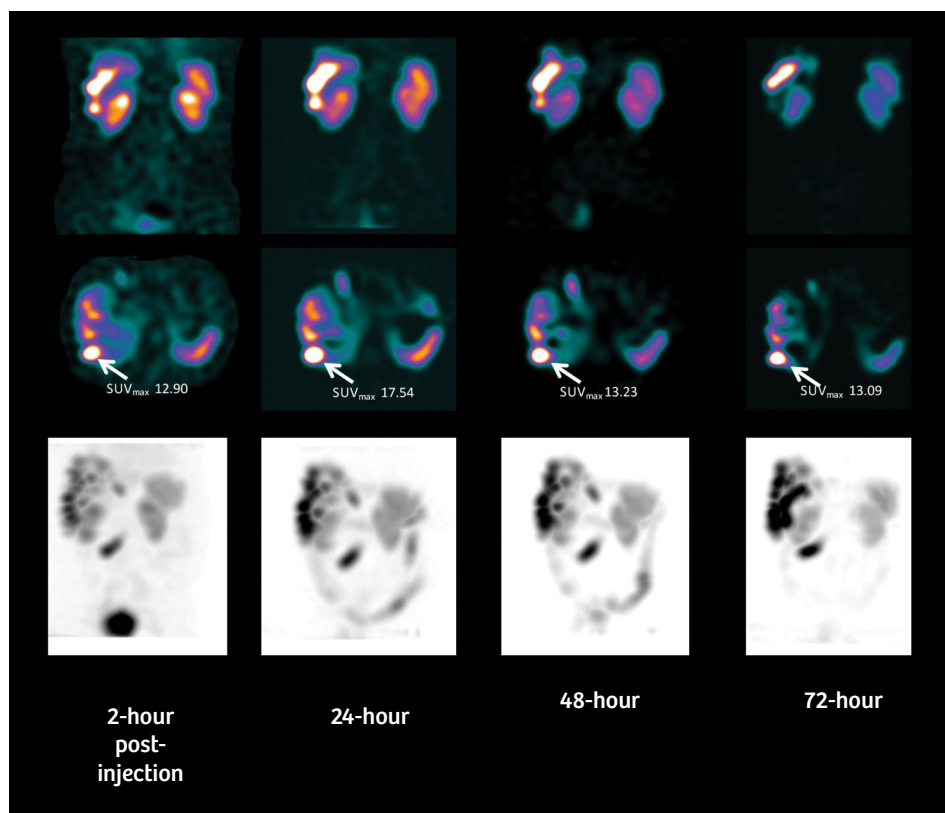


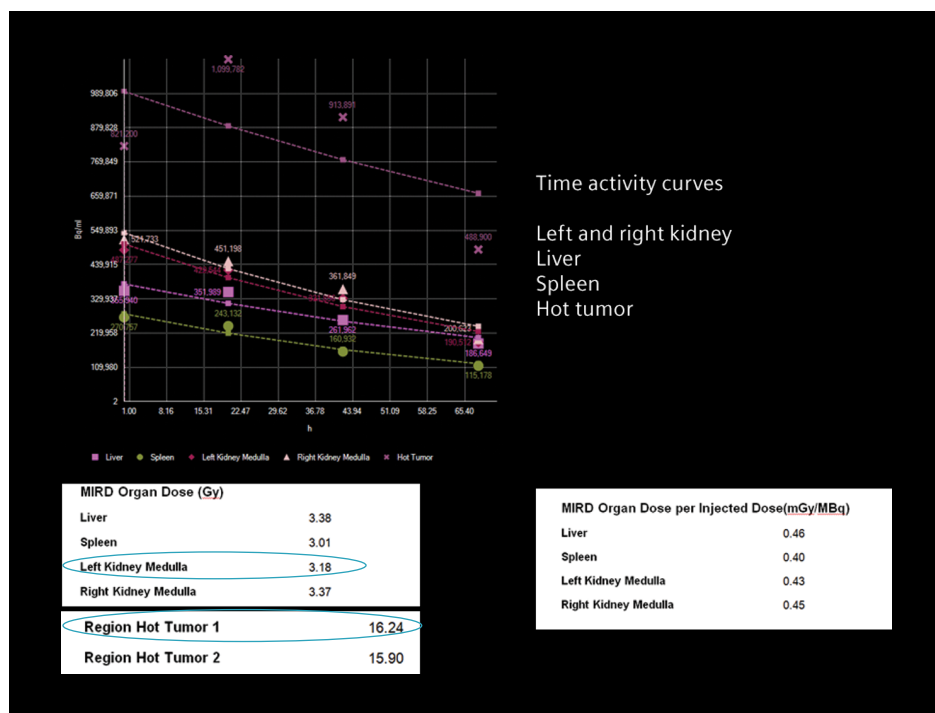
3 This figure shows sequential quantitative SPECT/CT acquisition in a patient with multiple liver metastases from a neuroendocrine tumor acquired 2, 24, 48, and 72 hours after therapeutic administration of 7 GB of ^{177}Lu DOTATATE. The renal uptake appears to gradually decrease on visual inspection from 2 hours to 72 hours. Quantitative SPECT/CT enables SUV estimation of lesions and critical organs, like the kidney, across multiple time points. SUV measurements of the left kidney across all 4 time points (middle row) show an initial (2-hour) SUV_{max} of 7.05, which decreases to 6.32 at 24 hours with further decrease to 4.71 at 48 hours and 3.34 at 72 hours. Kidney uptake shows a continuous gradual clearance as per quantitative evaluation. A considerable amount of tracer clearance into the colon is visualized from the 24 hours to 72 hours. Estimation of total tracer concentration in the renal cortex, across multiple time points, enables accurate estimation of tracer retention and transit, leading to proper estimation of renal dose following therapy, as well as prediction of cumulative renal dose.

Data courtesy of Ludwig Maximilians University, Munich, Germany.

4 Sequential quantitative evaluation of liver metastases is demonstrated here showing changes in SUV_{max} across 4 time points. SUV_{max} of metastases in the right lower part of the liver (arrow) is calculated as 12.90 at 2 hours after tracer administration. There is a significant increase of SUV_{max} to 17.54 at 24 hours, reflecting progressive tumor absorption of radiolabeled DOTATATE. SUV_{max} decreases subsequently to 13.23 at 48 hours. Tumor uptake remains similar between 48 and 72 hours, with 13.09 at 72 hours. The SUV estimation of individual lesions helps determine total tumor tracer concentration and clearance, enabling assessment of total tumor dose.

Data courtesy of Ludwig Maximilians University, Munich, Germany.





- 5 This figure shows time activity curves generated from VOI drawn over the left kidney, as well as one large liver metastasis, which align across multiple time points. The integral of the time activity curves yield retention times, which reflect an estimate of the number of disintegrations occurring within the VOI throughout the entire course of the tracer transit through the organ or tumor, considering both the physical and biological half-life. Combining the time activity integrals with dose conversion factors yields the effective dose in Gy, as shown in the dosimetry analysis tables.

Data courtesy of Ludwig Maximilians University, Munich, Germany.

the kidneys and bone marrow is critical to the therapeutic efficacy and outcome. Sequential whole-body planar scintigraphic acquisition following administration of therapeutic dose of ^{177}Lu DOTATATE has been used for tumor and organ dose estimation by several sites. However, sequential SPECT/CT-based dose estimations have been proven to improve accuracy, especially for renal dose, since proper separation of the kidney from the liver and adjacent tumor, and abdominal uptake is often difficult using a planar study.²

Comparison of whole-body planar scintigraphy-based and sequential quantitative SPECT/CT-based dosimetry estimations in patients treated with ^{177}Lu DOTATATE has shown that dosimetry using planar method leads to higher absorbed dose calculations in most patients.²

Quantitative SPECT/CT enables accurate assessment of absolute

concentration of the tracer within tumor and critical organs, with potential improvement in equivalent dose calculation. In this example, sequential quantitative SPECT/CT studies enabled accurate estimation of the volume of the tumor and critical organs such as the kidney, along with the absolute tracer concentration and SUV within these volumes, which served as inputs for dosimetry calculations.

Nephrotoxicity with ^{177}Lu DOTATATE therapy has been estimated to be low, with average annual decrease in creatinine clearance of 3%.³ Amino acid infusion during PRRT has been shown to further reduce renal toxicity. In a large series of 323 patients treated with PRRT, none of the patients had an annual decrease in renal function of more than 20%, with the mean radiation dose to the kidneys being 20.1 ± 4.9 Gy.⁴ In patients with large tumor burden with high receptor density, sequestration of the

radiotracer within the tumor may lead to reduced bioavailability to kidneys and bone marrow, thereby further decreasing the absorbed dose to critical organs (i.e., tumor sink effect).⁵ Accurate calculation of renal dose using sequential quantitative SPECT/CT would potentially help in properly identifying the patients who would be eligible for a higher number of therapies without exceeding the renal dose threshold limits, thereby maximizing tumor response probability without undue risk of renal toxicity. Sandstrom et al¹ performed renal dose estimation using sequential planar and SPECT/CT following ^{177}Lu DOTATATE therapy on 200 patients with metastatic NET. Anterior and posterior planar and SPECT/CT studies were performed at 24, 96 and 168 hours after administration of a therapeutic dose of 7.4 GBq of ^{177}Lu DOTATATE. Absorbed dose to kidneys ranged from 2-10 Gy per therapy cycle, which is comparable to the present study.

Mean cumulative renal dose was approximately 9 Gy for all therapy cycles. Kidney dose decreased by a median of 39% between the first and third therapies. With a 23 Gy limit to the kidneys, 50% of the patients could receive more than four cycles of therapy. However, dosimetry studies concluded that 20% of patients could tolerate less than four therapy cycles without crossing renal dose limits. Such a possibility of undertreating patients based on dosimetric estimations of renal dose, the progressive lowering of renal dose in subsequent therapies and the overall low incidence of renal toxicity, opens up the possibility of improved selection of patients for further therapies based on more accurate dosimetry studies made possible by quantitative SPECT/CT.

Conclusion

Following therapeutic administration of 7.4 GBq of ^{177}Lu DOTATATE in a neuroendocrine tumor patient with multiple functioning liver metastases, quantitative SPECT/CT was performed at 2, 24, and 78 hours. Data was used for determination of tumor and renal tracer concentration and volume across multiple time points in order to generate time activity curves and calculate tumor and renal dose. Calculated absorbed dose to the kidneys were within expected limits, enabling further radionuclide therapies to be delivered to this patient. High tumor dose calculated from dosimetry studies suggest the possibility of significant response following successive therapies. ●

References

- ¹ Sandstrom, et al. J Nucl Med 2013; 54:33-41.
- ² Garkavij, et al. Cancer Vol 116, Supplement S4, February 2010 pages 1084-1092.
- ³ Valkema, et al. J Nucl Med. 2005; 46 Suppl 1:83S-91S.
- ⁴ Bergsma, et al. Eur J Nucl Med Mol Imaging (2016) 43:1802-1811.
- ⁵ Beauregard, et al. Eur J Nucl Med Mol Imaging (2012) 39:50-56.

*xSPECT Quant is not commercially available in some countries. Due to regulatory reasons, its future availability cannot be guaranteed. Please contact your local Siemens organization for further details.

The statements by Siemens Healthineers' customers described herein are based on results that were achieved in the customer's unique setting. Since there is no "typical" hospital and many variables exist (e.g., hospital size, case mix, level of IT adoption) there can be no guarantee that other customers will achieve the same results.

Examination protocol

Scanner: Symbia T16

SPECT	
Injected dose (representative scan)	7.4 GBq (200 mCi) ^{177}Lu DOTATATE
Scan delay	2, 24, and 48 hours
Acquisition	SPECT/CT
CT	
Tube voltage	130 kV
Tube current	40 eff mAs
Slice collimation	2.5 mm

Legal information: On account of certain regional limitations of sales rights and service availability, we cannot guarantee that all products included in this brochure are available through the Siemens sales organization worldwide. Availability and packaging may vary by country and is subject to change without prior notice. Some/all of the features and products described herein may not be available in the United States.

The information in this document contains general technical descriptions of specifications and options as well as standard and optional features, which do not always have to be present in individual cases.

Siemens reserves the right to modify the design, packaging, specifications, and options described herein without prior notice.

Please contact your local Siemens sales representative for the most current information.

Note: Any technical data contained in this document may vary within defined tolerances. Original images always lose a certain amount of detail when reproduced.

“Siemens Healthineers” is considered a brand name. Its use is not intended to represent the legal entity to which this product is registered. Please contact your local Siemens organization for further details.

Siemens Healthineers Headquarters

Siemens Healthcare GmbH
Henkestr. 127
91052 Erlangen
Germany
Phone: +49 9131 84-0
siemens-healthineers.com

Published by

Siemens Medical Solutions USA, Inc.
40 Liberty Boulevard
Malvern, PA 19355
USA
Phone: +1-888-826-9702
siemens-healthineers.com

Global Business Line

Siemens Medical Solutions USA, Inc.
Molecular Imaging
2501 North Barrington Road
Hoffman Estates, IL 60192
USA
siemens.com/mi