

Embolization of an aortic type II endoleak

*syngo DynaCT
with IV contrast
media injection
can visualize
endoleak site.*

Interventional Radiology

Study Protocol

Courtesy of

Prof. Dr. O. Dudeck,
Dept. of Radiology and
Nuclear Medicine,
University Clinic Magdeburg,
Germany

Supported by

- syngo DynaCT
- syngo iGuide

System & Software

Artis zeego VC21
syngo MMWP VE52

Case Description

Patient history

70-year-old male patient with an abdominal aneurysm, treated 11/2012 with endovascular aortic repair (EVAR), presented with midabdominal pain. CT showed enlargement of the aneurysm sac and a type II endoleak, fed by lumbar arteries. The inferior mesenteric artery was occluded so the patient was scheduled for liquid embolization of the endoleak by direct puncture of the aneurysm sac.

Diagnosis

Type II endoleak after EVAR.

Treatment

Liquid embolization of the endoleak by direct puncture of the aneurysm sac.

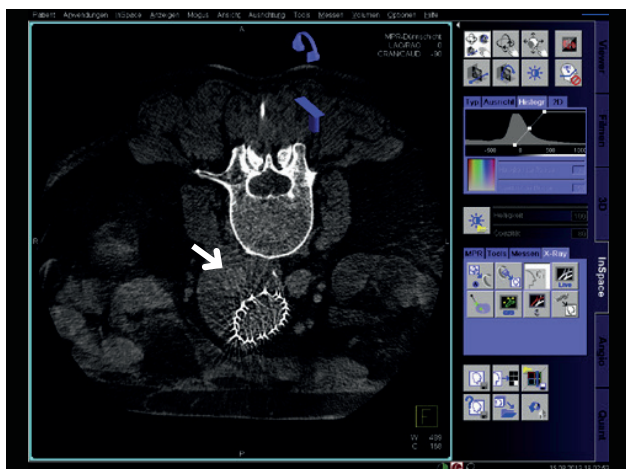
Tips and tricks

CT-like images of rotational angiography may also visualize endoleak of IV contrast media.

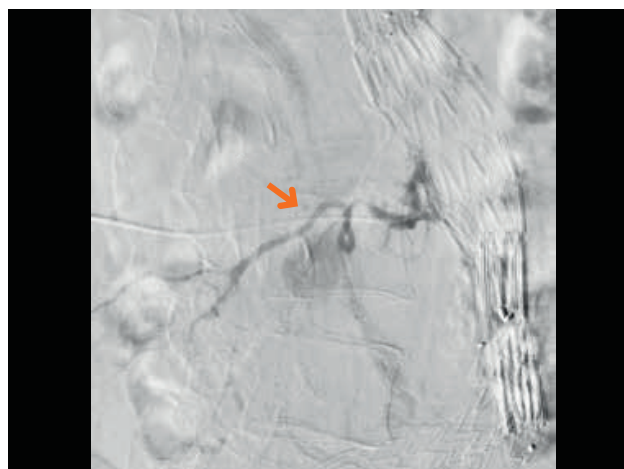
Embolization of an aortic type II endoleak

Acquisition protocol	8sDCT Body
Injection protocol	
Catheter position	Intravenous
Contrast medium (CM)	300 mg iodine/mL
Dilution	No
Injection volume	60 mL
Injection rate	3 mL/s
Duration of injection	20 s
X-ray delay	70 s
Power injector used	Yes

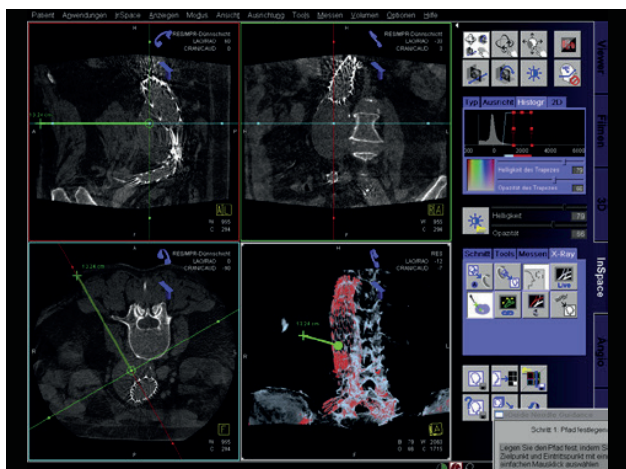
Reconstructions	Primary
Name	iGuide Softtissue Nat Fill HU Normal
VOI size	Large
Slice matrix	512 × 512
Kernel type	HU
Image characteristics	Normal
Reconstruction mode	Nat fill
Viewing preset	DynaCT Body



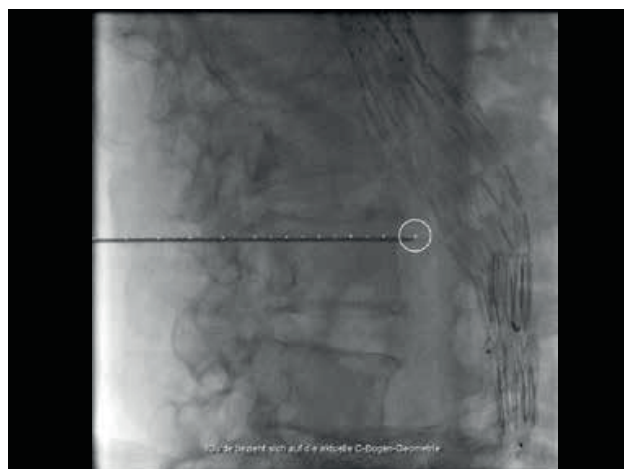
MPR thin transversal slice – visualization of endoleak (arrow) after administration of IV contrast media



Angiogram confirms precise puncture of the nidus, being fed by a lumbar artery (arrow)



syngo iGuide needle path planning



Fluoro image with needle and overlaid needle path

Siemens Healthineers Headquarters

Siemens Healthcare GmbH
Henkestr. 127
91052 Erlangen, Germany
Phone: +49 913184-0
siemens.com/healthineers

The statements by Siemens' customers presented here are based on results that were achieved in the customer's unique setting. Since there is no "typical" hospital and many variables exist (e.g., hospital size, case mix, level of IT adoption), there can be no guarantee that other customers will achieve the same results.

On account of certain regional limitations of sales rights and service availability, we cannot guarantee that all products included in this case are available throughout the Siemens sales organization worldwide.

All rights reserved.