

Study Protocol

Atrial fibrillation rapid pacing with PA injection and w/o test bolus



Rotational angiography is very helpful when using single shot devices.

Arrhythmias

siemens-healthineers.com/cardiology

Case Description

Diagnosis

51-year-old patient with paroxysmal atrial fibrillation

Treatment

Cryoballoon catheter ablation

Tips & Tricks

- PA injection
- Use breath-hold to reduce respiration motion artifacts
- Arms can be kept in normal position beside the body
- RV rapid pacing (always 200 bpm) 1 second before starting rotation

Protocol content

Test bolus can be skipped to reduce the amount of contrast medium and radiation dose. X-ray delay is always 9 seconds for every patient

Courtesy of

Florian Hintringer, MD, University Hospital Innsbruck, Austria

Supported by

syngo DynaCT Cardiac
syngo 3D Roadmap
syngo Electrophysiology Guidance
syngo LA Segmentation

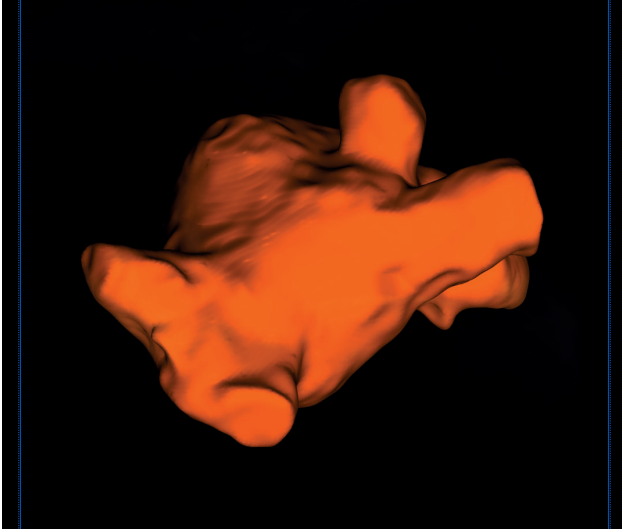
System

Artis Q.zen

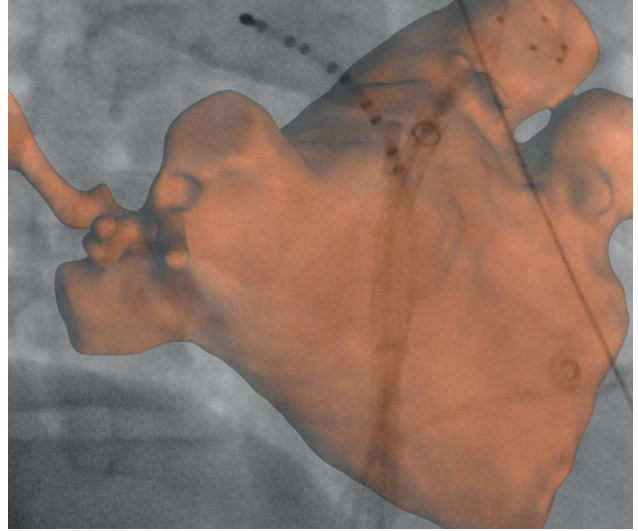
Atrial fibrillation with PA injection and rapid pacing

Acquisition protocol	5sDCT Card
Number of projections	248
System dose	0.36 μ Gy/f
Increment in degrees	0.8°/f
Injection protocol	
Catheter position	Pulmonary artery
Contrast medium (CM)	370 mg iodine/mL
Test bolus	w/o test bolus
Dilution	70%
Injection volume	100 mL (70 mL CM/30 mL saline)
Injection rate	20 mL/s
Duration of injection	5 s
X-ray delay	9 s with every patient
Power injector used	Yes
Reconstructions	Primary
VOI size	Full
Slice matrix	256 × 256
Kernel type	HU
Image characteristics	Normal
Reconstruction mode	Nat fill
Viewing preset	Cardiac PA inj.

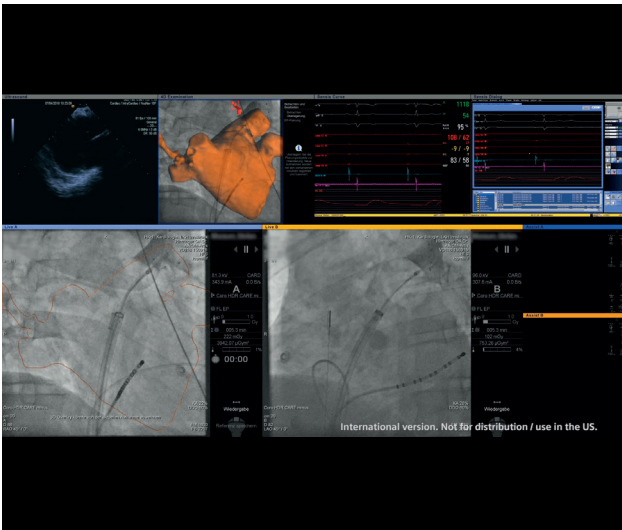
Clinical Images



Visualization of left atrium with syngo LA segmentation



syngo 3D Roadmap with overlay of left atrium



Large Display screenshot with overlay of LA contour on live fluoro image

Siemens Healthineers Headquarters

Siemens Healthcare GmbH

Henkestr. 127

91052 Erlangen, Germany

Phone: +49 9131 84-0

siemens-healthineers.com

The statements by Siemens Healthineers customers presented here are based on results that were achieved in the customer's unique setting. Since there is no "typical" hospital and many variables exist (e.g., hospital size, case mix, level of IT adoption), there can be no guarantee that other customers will achieve the same results.

On account of certain regional limitations of sales rights and service availability, we cannot guarantee that all products included in this case are available throughout the Siemens sales organization worldwide.

All rights reserved.