



Study Protocol

Complex pulmonary anatomy

The 3D picture extended the interventionalist's view with a better understanding of the anatomy, and expedited the intervention significantly.

Congenital Heart Disease

[siemens-healthineers.com/cardiology](https://www.siemens-healthineers.com/cardiology)

A

Case Description

Patient history

The patient was a 4-month-old female weighing 6 kg, with a length of 59 cm.

Diagnosis

Double outlet right ventricle (DORV), fallot type.

Treatment

- Balloon dilation with 5 mm Osypka balloon in left pulmonary artery (LPA).
- Coiling of collaterals from the right mammary artery with three detachable Cook coils.

Tips & Tricks

syngo iPilot was used to superimpose the 3D visualization onto the live fluoroscopy images for increased confidence during the procedure.

In addition, 3D imaging was helpful in positioning the X-ray tubes at the appropriate angle.

Courtesy of

Martin Glöckler, MD,
Department of Pediatric Cardiology,
University Erlangen, Germany

Supported by

syngo DynaCT Cardiac
syngo iPilot
syngo InSpace3D

System & Software

Artis zee with 20 × 20 FD
syngo X Workplace

Complex pulmonary anatomy

Acquisition protocol	5s DR Card Care
Number of projections	133
System dose	0.10 μ Gy/f
Increment in degrees	1.5°/f

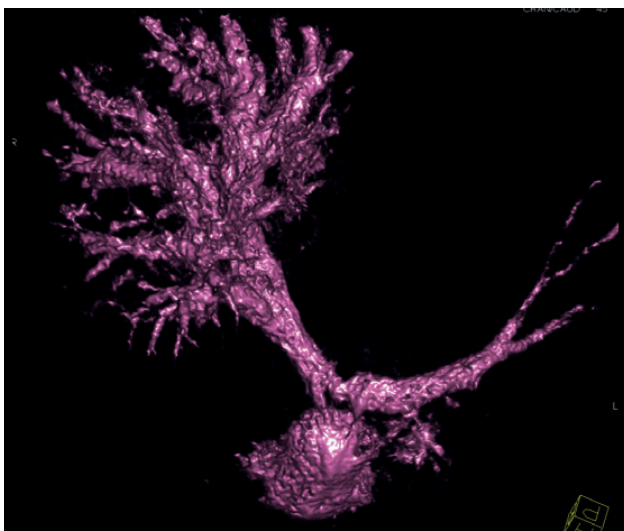
Injection protocol

Catheter position	Central pulmonary artery
Contrast medium (CM)	350 mg iodine/mL
Test bolus	w/o
Dilution	40%
Injection volume	24 mL (10 mL CM/14 mL saline)
Injection rate	4 mL/s
Duration of injection	6 s
X-ray delay	1 (1;1.5) s
Power injector used	Yes

Reconstructions

VOI size	Full
Slice matrix	512 × 512
Kernel type	HU
Image characteristics	Normal
Reconstruction mode	Nat fill
Viewing preset	Golden

Clinical Images



syngo InSpace reconstruction after "interactive punching"



syngo iPilot Overlay for guidance during the procedure

Siemens Healthineers Headquarters

Siemens Healthcare GmbH

Henkestr. 127

91052 Erlangen, Germany

Phone: +49 9131 84-0

[siemens-healthineers.com](https://www.siemens-healthineers.com)

The statements by Siemens Healthineers customers presented here are based on results that were achieved in the customer's unique setting. Since there is no "typical" hospital and many variables exist (e.g., hospital size, case mix, level of IT adoption), there can be no guarantee that other customers will achieve the same results.

On account of certain regional limitations of sales rights and service availability, we cannot guarantee that all products included in this case are available throughout the Siemens sales organization worldwide.

All rights reserved.