

**Outcome relevant decisions –  
redefining patient pathways**

# **MAGNETOM Sola Cardiovascular Edition**

[siemens-healthineers.com/sola-cardiovascular](https://siemens-healthineers.com/sola-cardiovascular)

**SIEMENS**  
**Healthineers** 



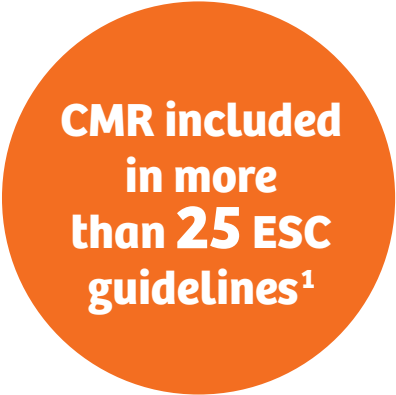
**A dedicated  
MRI scanner  
designed to meet  
the demands of  
cardiovascular  
examinations**

**Free breathing exams:** Get high-quality consistent cardiac MRI scans with Compressed Sensing Cardiac Cine for functional imaging even for patients with arrhythmias or dyspnea.

**Tissue characterization:** MyoMaps with HeartFreeze to detect myocardial injury and get patients on the right treatment pathway fast.

**Consistent results, fast:** BioMatrix Sensors and the AI-powered Cardiac Dot Engine provide fast patient setup and step-by-step guidance for standardized diagnostic cardiac MRI exams.

<sup>1</sup>*Role of cardiovascular magnetic resonance in the guidelines of the European Society of Cardiology. Von Knobelsdorff-Brenkenhoff F, Schulz-Menger J. Journal of Cardiovascular Magnetic Resonance. 2016; 18:6.*

A large orange circle graphic on the right side of the slide, containing white text.

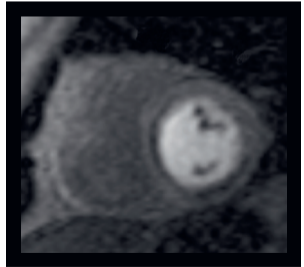
**CMR included  
in more  
than 25 ESC  
guidelines<sup>1</sup>**

# Main Clinical Indications for Cardiovascular MRI<sup>2</sup>

**Indication:** Assessment of **myocardial ischemia** using CMR stress perfusion in suspected or known CAD

## **Added value of CMR:**

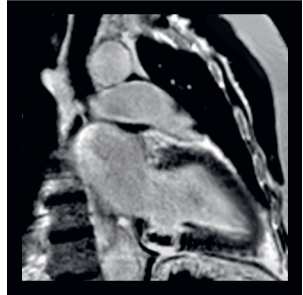
- Comprehensive assessment of significant CAD
- Diagnostic image quality in widest range of patients
- No ionizing radiation



**Indication:** Assessment of **myocardial viability** to guide coronary revascularization strategy in patients with coronary occlusion

**Added value of CMR:**

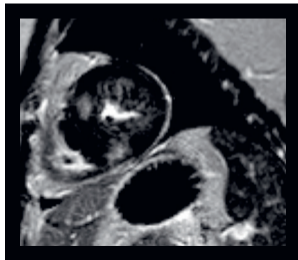
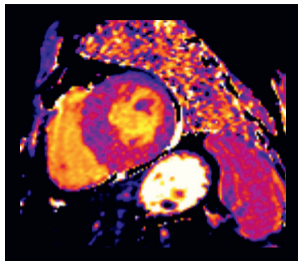
- Identification of patients likely to benefit from coronary revascularization therapy
- Avoidance of invasive catheter procedure for patients with no/minimal chance to benefit



**Indication:** Differential diagnosis of patients with **left ventricular hypertrophy**

**Added value of CMR:**

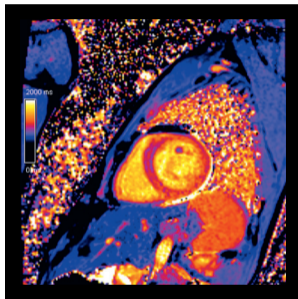
- Differentiation of myocardial tissue composition
- Identification of potential risk factors for sudden cardiac death (fibrosis in HCM)
- Identification of life threatening myocardial involvement in systemic disorders



Indication: Detection of **myocardial inflammation**

**Added value of CMR:**

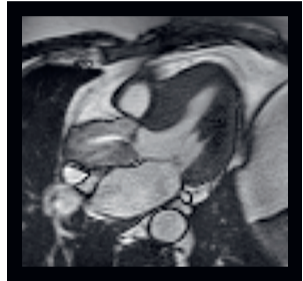
- Quantification of tissue damage including differentiation of reversible and irreversible injury
- Differential diagnosis of inflammation to inform treatment strategy



**Indication:** Assessment of cardiac anatomy, morphology and function in complex **congenital heart disease** and **structural heart disease**

**Added value of CMR:**

- Evaluation of orifice area
- Assessment of flow and hemodynamic relevance of structural disease
- Individual risk stratification



<sup>2</sup>With the support of Jeanette Schulz-Menger, M.D., Charité  
Universitätsmedizin Berlin and Helios Clinics Berlin-Buch, Germany

*MAGNETOM Sola is 510(k) pending.*

.....

**Siemens Healthineers Headquarters**

Siemens Healthcare GmbH

Henkestr. 127

91052 Erlangen, Germany

Phone: +49 9131 84-0

[siemens-healthineers.com](http://siemens-healthineers.com)

*Published by Siemens Healthcare GmbH · Order No. 11-18-12612-01-76*

*Printed in Germany · CIT12612 6405 08181. · © Siemens Healthcare GmbH, 2018*