

Workflow *syngo* Aortic Valve Guidance

Using pre-procedure CTA data for planning

- ◆ Load the CTA data.

Using DynaCT data for planning

- ◆ Start 3D Wizard and select an AVG Imaging program (alternatively use a 5s DCT Card DynaCT program).



- ◆ Start *syngo* Aortic Valve Guidance.

Planning

- ✓ The aortic root is segmented automatically, and marked with the important anatomical landmarks.
- ◆ Switch between the perpendicular views to verify the positions.
- ◆ Optional: Measure the valve annulus diameter and area.



Overlay



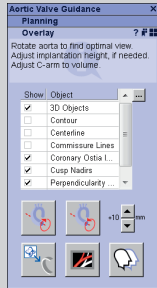
- ◆ Select syngo 3D Roadmap (overlay live image to 3D image).
- ◆ Perform 2D/3D or 3D/3D registration.



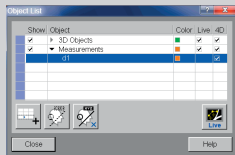
- ◆ Rotate aortic root perpendicularly around centerline to find an optimal view, or select **Rotate Aorta** from the onscreen menu.



- ◆ Optional: Adjust the valve implantation height.



- ◆ Select object list to define your shown objects.



- ◆ Select overlay objects to display the overlay on the live image.



- ◆ Send the VRT angulation to C-arm (via **4D task card/touchscreen/Adjust C-arm** in **VRT** onscreen menu).
- ◆ Move C-arm to match 3D image angulation.



- ◆ Select syngo 3D Roadmap (overlay live image to 3D image).
- ◆ Perform 2D/3D or 3D/3D registration.