



Accessories for Siemens Healthineers Mammography systems

Email: HIImagingAccessories.gb.team@siemens-healthineers.com

MAMMOMAT Accessories

Flex compression plate, 18cm x 24cm

Two-way inclination compression plate, with high edge. Its angle of tilt ensures that the entire breast is evenly compressed.

Order no. **14404860**



Flex compression plate, 24cm x 30cm

Two-way inclination compression plate, with high edge. Its angle of tilt ensures that the entire breast is evenly compressed.

Order no. **14404861**



Shifting paddle, 18cm x 24cm

The paddle can be used in a central position and also in a left or right position. The sliding of the paddle improves the positioning of small patients in oblique and lateral projection views.

Order no. **14418355**



Detail compression plate, 9cm x 9cm

Small compression paddle for small 'coned' view compression.

Order no. **14404862**



SpotPlus compression plate

Special plate for detailed exposures (approx. 8cm diameter) including display of the surrounding tissue with 18cm x 24cm radiation field.

Order no. 14418338



Axilla compression plate, 8cm x 20cm

Special plate for axillary views in contact mode. Plate is 8cm x 20cm. The plate can also be used for small breasts.

Order no. 14404863



Spot Focus compression plate

Special Spot Focus plate for spot view in contact mode. Has a smaller compression area with an area of 6cm x 6cm; radiation field of 9cm x 9cm.

Order no. 14428912



Mag Focus compression plate

Special Mag Focus plate for spot view in magnification mode. Has a smaller compression area with an area of 6cm x 6cm; radiation field of 9cm x 9cm.

Order no. 14428913



UPS Eaton 5130i, 0,5 kVA, 22 minutes

This uninterruptible power supply is designed for use with critical computer systems and industrial applications, so that there is no loss of data, and applications in progress may continue in case of power failure.

Order no. 10655856



Footswitch for release of radiation

The footswitch enables radiation release and thus improves user ergonomics at high patient volumes.

Order no. 14404893



MoodLight luminated glass wall

Illuminated glass panel to be attached behind the swivel arm. The light colour can be freely selected by the user. Dynamic colour changes can be set on the WH AWS with a few mouse clicks.

Order no. 14404857



Tomosynthesis Upgrade

Tomosynthesis upgrade

All software and licence requirements to upgrade the installed system to True 3D tomosynthesis.

Order no. 14428281

Tomosynthesis compression plate, 25cm x 36cm

Tomosynthesis compression plate 25cm x 36cm with high edge (7cm at front edge).

Order no. 14409950



Standard compression plate, 24cm x 30cm

Standard compression plate 24cm x 30cm with low edge (4cm at front edge).

Order no. 14404867



Contrast detail phantom CDMAM

Contrast detail phantom CDMAM for Mammography with software, including carrying case.

Order no. 10191285



Mammo biopsy phantom

Phantom for practicing mammographic stereotactic needle biopsy.

Order no. **10191441**



Plastic bushing, in pairs and boxes of 50

12G	10400163
14G	10400164
16G	10400165
18G	10400166
20G	10400167
20G Open	10400168
22G	10400276



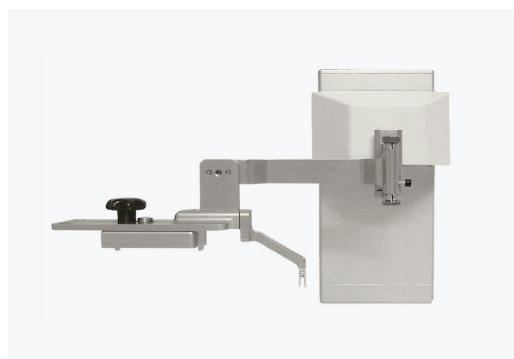
Steel bushing, in pairs and boxes of 10

12G	10400277
13G	10400278
14G	10400169
16G	10400170
18G	10400171
20G	10400172
20G Open	10400173

Horizontal holder Mammotome Inspiration

Holder for use with the Mammotome vacuum biopsy device for the lateral approach biopsy technique.

Order no. **10562963**



Vertical holder Mammotome Inspiration

Holder for use with the Mammotome vacuum biopsy device for the vertical approach biopsy technique.

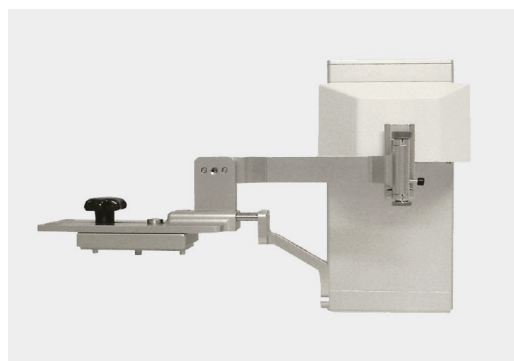
Order no. 10562964



Horizontal holder EnCor Inspiration

Holder for use with the EnCor vacuum biopsy device for the lateral approach biopsy technique.

Order no. 10562997



Lateral holder Eviva Inspiration

Holder for use with the Eviva vacuum biopsy device for the lateral approach biopsy technique.

Order no. 10655844



Vertical holder EnCor Inspiration

Holder for use with the EnCor vacuum biopsy device for the vertical approach biopsy technique.

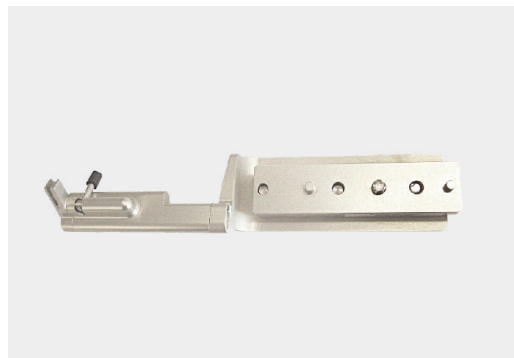
Order no. 10655845



Vertical needle holder for Mammotome Revolve

Holder for use with the Mammotome Revolve vacuum biopsy device for the vertical approach biopsy technique.

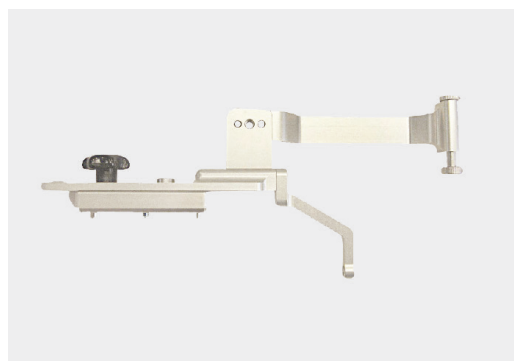
Order no. 10847199



Horizontal needle holder for Mammotome Revolve

Holder for use with the Mammotome Revolve vacuum biopsy device for the lateral approach biopsy technique.

Order no. 10847198



Horizontal needle holder for Eviva

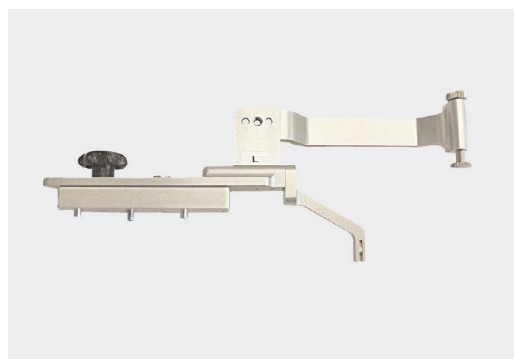
Holder for use with the Eviva vacuum biopsy device for the vertical approach biopsy technique.

Order no. 10847076



Horizontal needle holder for Atec

Order no. 10847142



Chairs and Tables

Special mammography chair ak5010 MBS

Height adjustable biopsy chair.

Order no. 8606654



Mobile stereotaxy chair ak5010 MBS

Specially designed chair that becomes a horizontal 'table' with adjustable segments for biopsy procedures.

Order no. 10655671



ELISA biopsy table

Horizontal table for biopsy and lithotripsy.

Order no. 10847138



DBI breast imaging table

Decubitus breast imaging table.

Order no. 10847139



Mammography therapy chair matrix

Order no. 05143685

Special mammography chair ak5003m

Height adjustable biopsy chair.

Order no. 08606654

