



Accessories for Siemens Healthineers CT systems

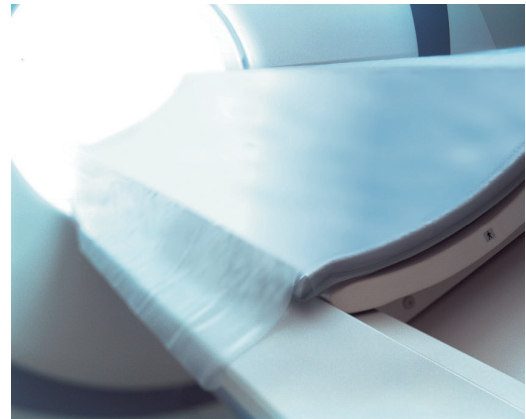
Email: HIImagingAccessories.gb.team@siemens-healthineers.com

Mattress Covers

Protective mattress cover

(CT Radscan vinyl cover)

Order no.	Emotion	07437515
	Sensation	07437523
	Definition AS/AS+/Open	
	1600mm and 2000mm table	10191419
	Definition Flash	10191419
	MPT	07437523
	Edge	07437523



CT accessory cart

Storage cart with four drawers for CT accessories and storage material. Practical positioning due to castors.

Dimensions: 1200mm (H), 1200mm (W), 500mm (D)

Order no.	Emotion	14421024
	Sensation	14416530
	Definition AS/AS+/Open	04431669
	Definition Flash	01442815
	Edge	14428157



Cushions

Cushion for head / arm support

Order no.	Emotion	N/A
	Sensation	N/A
	Definition AS/AS+/Open	14408141
	Definition Flash	14402982
	Edge	14428529



Hand restraint for head / arm support

Order no.	Emotion	N/A
	Sensation	N/A
	Definition AS/AS+/Open	14408144
	Definition Flash	14403080
	Edge	14428530

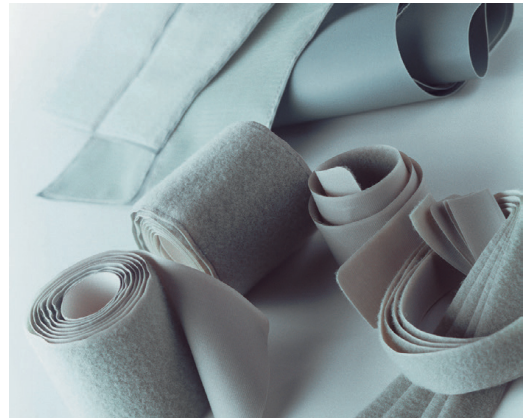


Patient Restraints

Complete patient restraint set

Set of restraint straps for the safe positioning of the patient on the patient table. The strap set consists of 1 body strap, broad; 2 body straps, narrow; 3 forehead straps; 1 chin strap, broad; 1 chin strap, narrow.

Order no.	Emotion	14406699
	Sensation	10017582
	Definition AS/AS+/Open	10017582
	Definition Flash	10017582



Body restraint set

Set of restraint straps for the fixation and safe positioning of the patient's body directly on the movable part of the patient table. The set consists of 1 body strap, broad; 2 body straps, narrow.

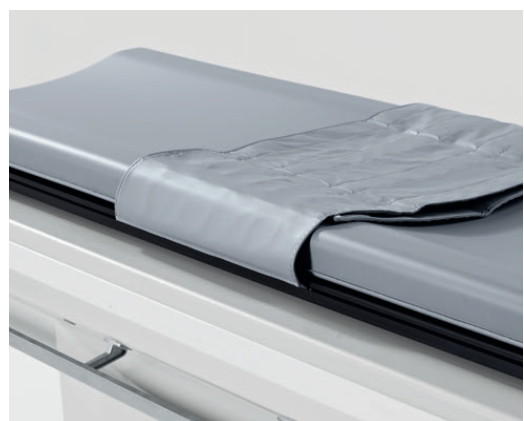
Order no.	Emotion	N/A
	Sensation	10017582
	Definition AS/AS+/Open	
	1600mm table	14428072
	2000mm table and MPT	14420930
	Definition Flash	14428164
	Edge	14428164



Patient restraint 400mm

The 400mm wide restraint strap assists safe positioning of even obese patients on the patient table.

Order no.	Emotion	N/A
	Sensation (as per image)	14408969
	Definition AS/AS+/Open	
	2000mm table only -	
	strap with plastic strips	14408143
	as per image	14408969
	Definition Flash	
	strap with plastic strips	14428165
	Edge	14428165



Head fixation set

Set of restraint straps for the fixation and safe positioning of the patient's head in the head holder.

Order no.	Emotion	N/A
	Sensation	N/A
	Definition AS/AS+/Open	14408178
	Definition Flash	14402985
	Edge	14402985

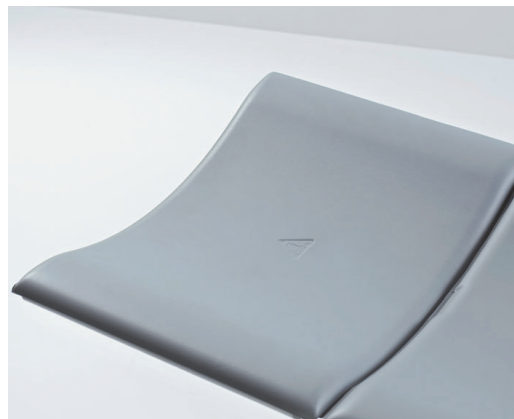


Table Accessories

Table extension

Used for extending the patient table for feet-first patient positioning and extra-long exam length, e.g. femoral run-off. Removable cover.

Order no.	Emotion	14406651
	Sensation	10017579
	Definition AS/AS+/Open	
	1600mm table	14428073
	2000mm table and MPT	14420931
	Definition Flash	14402987
	Edge	14402987



Paper roll dispenser

The paper roll dispenser can be placed at any desired position on the patient table. The dispenser enables a quick supply of paper that can be used to hygienically cover the table mattress for patient examinations.

Order no.	Emotion	14406654
	Sensation	N/A
	Definition AS/AS+/Open	14408140
	Definition Flash	14402991



Mattress for patient table

Positioning mattress for comfortable and convenient patient positioning. The mattress is attached to the table top by means of Velcro tapes.

Order no.	Emotion	14406698
	Sensation	10017581
	Definition AS/AS+/Open	
	1600mm table	14428071
	2000mm table MPT	14420929
	MPT	14410232
	Definition Flash	
	2000mm table	14420929
	MPT	14410230
	Edge	14402988



Mattress with spill protection

This mattress is ideal for trauma and acute care settings. The mattress has wide flaps and offers additional protection by preventing liquids spilling into the table by covering the gaps between the table top and the table base.

Order no.	Emotion	14430655
	Sensation	N/A
	Definition AS/AS+/Open	
	1600mm table	14428069
	2000mm table	14420756
	Definition Flash	
	2000mm table	14419014
	Edge	2000mm table
		14449491



Mattress for multi-purpose table

Positioning mattress for comfortable and convenient patient positioning. The mattress is attached to the table top by means of Velcro tapes.

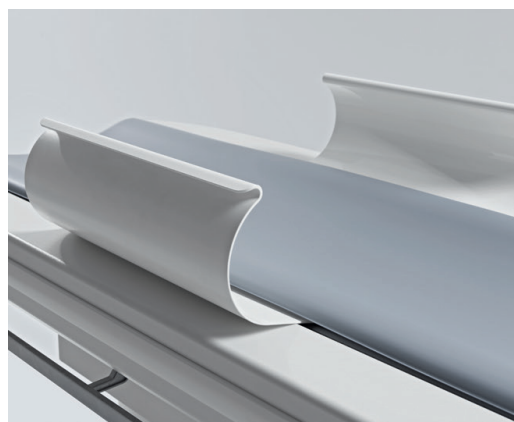
Order no.	Emotion	14420504
	Sensation	N/A
	Definition AS/AS+/Open	
	1600mm table	14428067
	2000mm table	14433305
	Definition Flash	14410230
	Edge	14449492



Additional arm fixation

The additional arm fixation enables a quick and safe positioning of the patient's arms close to the patient's body. Especially large patients benefit from the convenient positioning device that prevents the patient's arms slipping off the patient table.

Order no.	Emotion	14406657
	Sensation	14429894
	Definition AS/AS+/Open	14408060
	Definition Flash	14403076
	Edge	14403076



Positioning Aids

Knee and leg support

The knee and leg support assists the easy positioning of the patient in a supine position. Improves patient comfort with better leg positioning. Light-weight construction for easy handling.

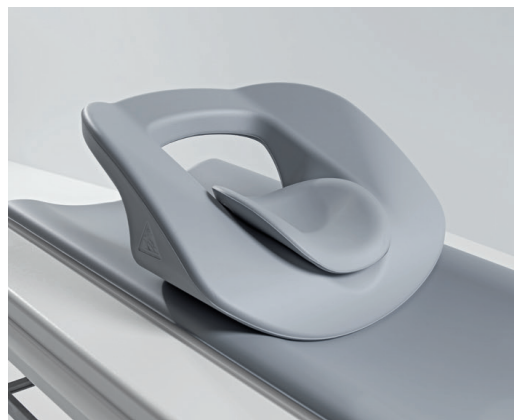
Order no.	Emotion	14406652
	Sensation	10017586
	Definition AS/AS+/Open	14408184
	Definition Flash	14402989
	Edge	14402989



Head and arm support

The head and arm support can freely be placed at any position on the patient table or patient table extension. It is used during chest and abdominal examinations to comfortably position the patient's head and arms.

Order no.	Emotion	14406653
	Sensation	14410987
	Definition AS/AS+/Open*	14408183
	Definition Flash*	14402981
	Edge	14402981



Coronal supine head holder

Used for coronal imaging of the head with patient in a supine position. Head holder is positioned on table top.

Order no.	Emotion	14406649
	Sensation	10017576
	Definition AS/AS+/Open*	N/A
	Definition Flash*	N/A



*Includes cushion and hand restraints

Coronal prone head holder

Used for coronal imaging of the head with patient in a prone position.

Order no.	Emotion	14406650
	Sensation	10017577
	Definition AS/AS+/Open	N/A
	Definition Flash	N/A



Head rest

For the comfortable positioning of the patient's head on the table top.

Order no.	Emotion	14406656
	Sensation	10017580
	Definition AS/AS+/Open	14408181
	Definition Flash	14402986
	Edge	14402986



Head holder

Head holder for easy positioning and fixation of the patient's head. Used in combination with the cushion set (below) to secure the head of the patient.

Order no.	Emotion	14406700
	Sensation	10017583
	Definition AS/AS+/Open	14408177
	Definition Flash	14402983
	Edge	14402983



Tiltable head holder

Tiltable head holder for the fixation of the patient's head. With a tilt range between +30° to -15°, high quality neurology imaging is permitted.

Order no.	Emotion	N/A
	Sensation	N/A
	Definition AS/AS+/Open	14408182
	Definition Flash	14402990
	Edge	14428528



Cushion set for head holder

2 wedge cushions -15° and 25° plus 1 pair of thick and thin fixation cushions.

Order no.	Emotion	14406701
	Sensation	10017584
	Definition AS/AS+/Open	14408221
	Definition Flash	14408236
	Edge	14408236



Clinical Software Applications

Visit www.siemens-healthineers.com/en-uk/computed-tomography/options-upgrades/clinical-applications for our portfolio of CT clinical software applications. View clinical images, case studies and step-by-step videos of the latest software applications as well as request free of charge 90-day trials and indicative pricing.

Intervention Accessories

i-Control

i-Control CT module supports interventional procedures as an independent wireless remote unit. The module allows the user to control the scanner directly from the examination room, e.g. control of scan range, selection of table movement, table position, scrolling through datasets or windowing of datasets.

Order no.	Emotion	N/A
	Sensation	N/A
	Definition AS/AS+/Open	
	Wired	14408299
	Wireless	14408300
	Definition Flash	
	Wired	14410065
	Wireless	14410066



Foot switch

Foot switch for triggering scans from the gantry and the patient positioning table areas.

Order no.	Emotion	14406644
	Sensation	10017571
	Definition AS/AS+/Open	14430832
	Definition Flash	
	Serial number <73507	14430848
	Serial number >73507	14433741



i-Control trolley

Mobile trolley for the i-Control CT module gives the possibility of freely positioning in the examination room during a scan. The i-Control CT module can be stored on the trolley. Requires wired i-Control.

Order no.	Emotion	N/A
	Sensation	N/A
	Definition AS/AS+/Open	14408304
	Definition Flash	14410070

