

Precision. Made Simple.

Imaging solutions for
Coronary Artery Disease

siemens-healthineers.us/cardiology



ARTIS icono for cardiovascular interventions

Precision. Made simple.

With the growth of new and more complex cardiac procedures and devices, the volume of coronary interventions can result in ever-changing workflows. To transform care delivery and optimize clinical operations, you need high-quality imaging that supports superior clinical confidence, minimizes dose-related risks, and enables efficient procedural workflows.



More than 38,000

coronary artery disease
procedures are performed
worldwide per day



Affordable floor system with ceiling-like performance



Revolutionary dose-image optimization and quality

By automatically unleashing up to 15,000 possible combinations of our proprietary, next-level Automated Exposure Control (AEC) parameters, OPTIQ automatically selects a low dose for your preferred image quality level.



Patients with severe heart conditions can be challenging BMIs

The imaging chain will now assess patient size and keep their imaging preferences standard. Without it, you could be sacrificing image quality when treating larger patients.



Expedite your workflow with one-click Case Flows

Eliminate the need to adjust parameters manually for each pre-, intra-, and post-procedural step, personalized based on your preferences.

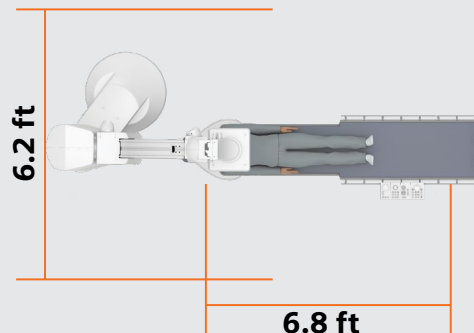


Next-Generation open connectivity and communication

Connect relevant systems via standard protocols and a unified interface to support research and the development of new, in-house applications as well as integration with the Siemens Healthineers Digital Ecosystem.

Unlimited positioning and flexibility

ARTIS icono floor provides ceiling-like flexibility with no limits. With a 45% smaller footprint, it can be easily installed in rooms as small as 269 sq. ft., while providing patient coverage for up to 6.2 feet latitudinally and 6.8 feet longitudinally.



Leverage real-time stent imaging

Up to 30% of all PCI procedures can be classified as complex and approximately 30% of stents are currently under deployed, which leads to poor patient outcomes.¹

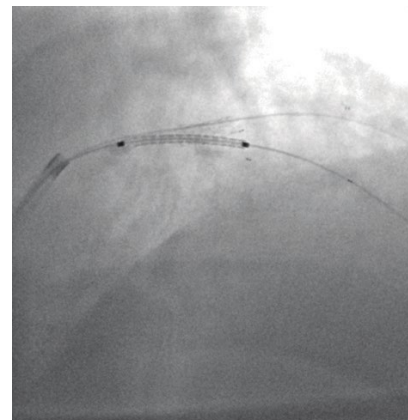
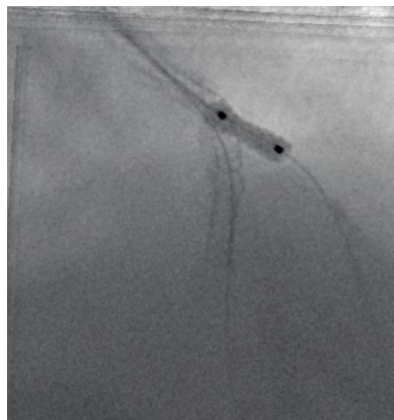
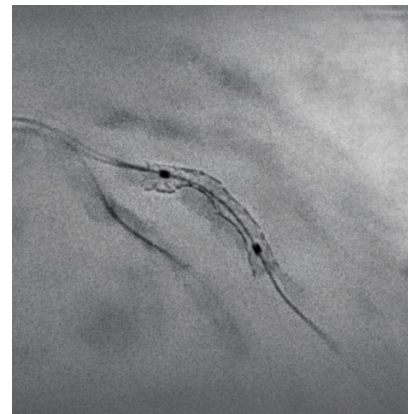
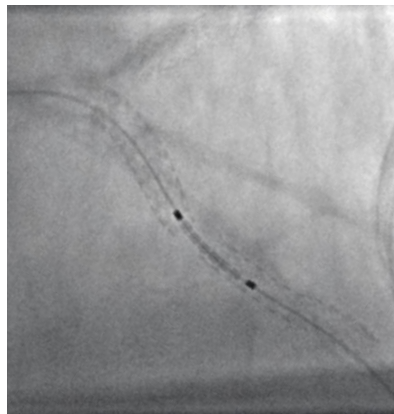
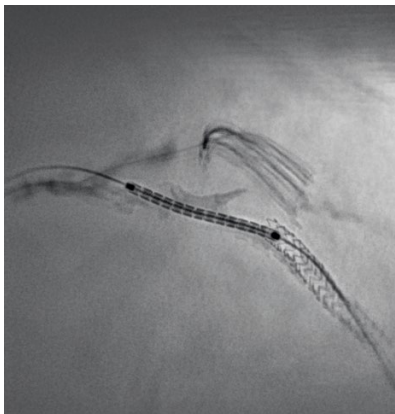
Optimal stent deployment is critical. Applications like CLEARstent deliver static images to confirm stent placement and opposition to the vessel wall. CLEARstent Live dynamically supports proper positioning and alignment prior to stent deployment and aids in avoiding a geographical miss.

CLEARstent helps

- Confirm accuracy of stent placement to determine adequate stent dilation and anatomical location and avoid jailing vessels when stenting bifurcation lesions
- Assess acceptable overlap of multiple stents during PCI for long lesions
- Limit risk by seeing stents that are poorly expanded or fractured

CLEARstent Live enhances your visualization so you can

- Manipulate or move around balloons and stents to verify positioning, leveraging real-time enhanced images that are stabilized while you do so
- Assess acceptable overlap of multiple stents and avoid jailed vessels in bifurcated lesions prior to deployment
- Enable maximum precision when balloon positioning for post-dilation
- Perform procedures, including complex PCI, faster
- No contrast dye required



Courtesy of University Hospital Erlangen, Germany

Stent placement in bifurcated lesions shown using CLEARstent.

Improve planning for CTO guidance

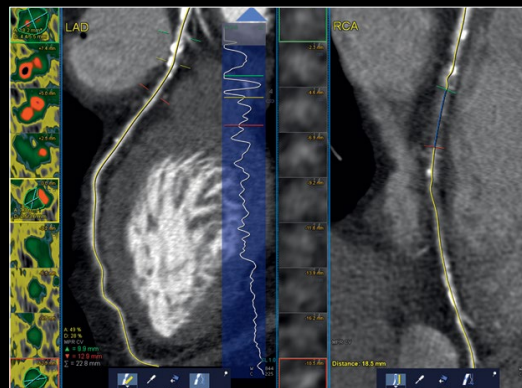
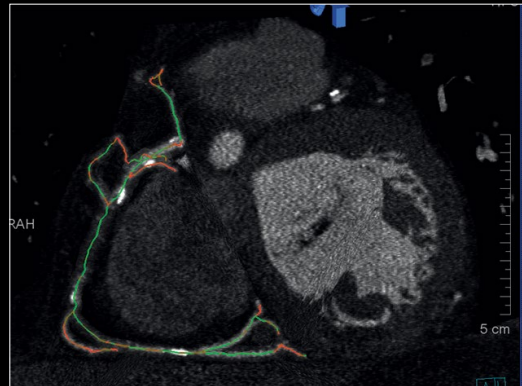
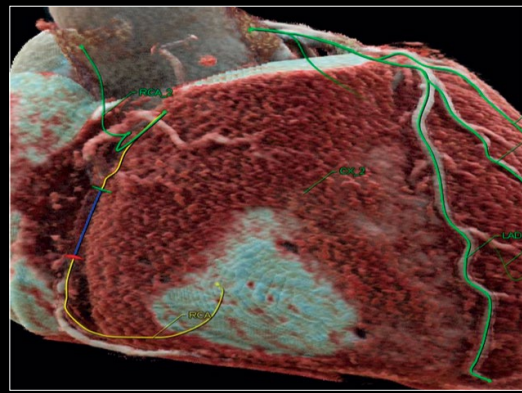
What if you could increase your confidence when treating CTO patients?

With syngo® CTO Guidance, you can improve pre-procedural planning for these patients by creating center lines of the vessels.

The ability to plan procedures in advance with J-CTO scoring can reduce time to cross, optimize device utilization (i.e., less wire usage), and even enable you to choose the right angulation in advance without exposing patients and staff to unnecessary radiation.

*"syngo CTO Guidance can shorten procedure time in complex cases. For example, we had a case attempted twice before without success. Using CTA to clarify the course of the vessel and an angled microcatheter, we were able to direct the wire appropriately and successfully across the occlusion."**

Emmanouil S. Brilakis, MD, PhD, FACC, FAHA, FESC, FSCAI
Director, Center for Complex Coronary Interventions
Minneapolis Heart Institute, Abbott Northwestern Hospital
Minneapolis, MN.



Reduce radiation exposure for staff and patients during therapy

These dedicated applications help you provide superior medical care at a low, reasonable dose without compromising image quality or clinical outcomes.

RaySafe: Real-time radiation control

Using dosimeters worn by each member of the medical team, RaySafe provides real-time personal dose exposure information to your staff.

Dose-saving protocols

Reduce radiation exposure for patients during your daily routine with these protocols.

- CAREvision: Dose reduction by adapting pulses per second to the lowest possible value.
- CAREfilter: Minimizes patient entrance dose with nearly no impact on image quality.
- CAREmonitor: Real-time patient entrance dose monitoring visualizes the accumulated patient entrance dose according to current projection to avoid skin burn.
- Low-dose acquisition for coronaries: Specifically developed for PCI procedures. Ultra-low dose protocols can be chosen right at the table for fluoroscopy and acquisition.

*The outcomes and statements provided by customers of Siemens Healthineers are unique to each customer's setting. Since there is no "typical" hospital and many variables exist (e.g., hospital size, case mix, and level of service/technology adoption), there can be no guarantee that others will achieve the same results.

At Siemens Healthineers, our purpose is to enable healthcare providers to increase value by empowering them on their journey toward expanding precision medicine, transforming care delivery, and improving patient experience, all enabled by digitalizing healthcare.

An estimated 5 million patients globally benefit every day from our innovative technologies and services in the areas of diagnostic and therapeutic imaging, laboratory diagnostics, and molecular medicine, as well as digital health and enterprise services.

We're a leading medical technology company with over 120 years of experience and 18,500 patents globally. With about 50,000 dedicated colleagues in over 70 countries, we'll continue to innovate and shape the future of healthcare.

On account of certain regional limitations of sales rights and service availability, we cannot guarantee that all products included in this brochure are available through the Siemens Healthineers sales organization worldwide. Availability and packaging may vary by country and is subject to change without prior notice. Some/All of the features and products described herein may not be available in the United States.

The information in this document contains general technical descriptions of specifications and options as well as standard and optional features, which do not always have to be present in individual cases.

Siemens Healthineers reserves the right to modify the design, packaging, specifications, and options described herein without prior notice. For the most current information, please contact your local sales representative from Siemens Healthineers.

Note: Any technical data contained in this document may vary within defined tolerances. Original images always lose a certain amount of detail when reproduced.

¹Educational Supplement. *Cardiovascular News*. 2016 Aug;2-3.

²McBeath K, et al. Improved clinical outcomes post percutaneous coronary intervention (PCI) with the use of an enhanced visualization system (CLEARstent). *European Heart Journal*. 2018;39(1):1141. Available from: <https://doi.org/10.1093/eurheartj/ehy566.P5500>

Siemens Healthineers Headquarters

Siemens Healthcare GmbH
Henkestr. 127
91052 Erlangen, Germany
Phone: +49 9131 84-0
siemens-healthineers.com

USA

Siemens Medical Solutions USA, Inc.
Healthcare
40 Liberty Boulevard
Malvern, PA 19355-9998, USA
Phone: +1-888-826-9702
siemens-healthineers.us