

ARTIS icono for cardiovascular interventions

Precision. Made simple.

With the ever-growing demand to treat cardiovascular disease, the importance of high-quality imaging at a low dose and the desire to work with an easy-to-use system is paramount.

At the same time, increased patient volumes require a seamless connection to related systems like IVUS, OCT, and FFR. We can help you reduce complexity to increase efficiency. This helps inspire new methods, drive advanced procedures to become accepted standards, and ultimately support outcomes that matter to patients.

Introducing ARTIS icono

- Groundbreaking approach to an optimal balance of image quality and dose
- Procedural intelligence that adjusts system preferences with the touch of a single button for full cardiac coverage with no limitations
- Next-generation open connectivity as the foundation for the digitalization of the interventional suite

At Siemens Healthineers, our purpose is to enable healthcare providers to increase value by empowering them on their journey toward expanding precision medicine, transforming care delivery, and improving patient experience, all enabled by digitalizing healthcare.

An estimated 5 million patients globally benefit every day from our innovative technologies and services in the areas of diagnostic and therapeutic imaging, laboratory diagnostics, and molecular medicine, as well as digital health and enterprise services.

We are a leading medical technology company with over 170 years of experience and 18,000 patents globally. With more than 48,000 dedicated colleagues in 75 countries, we will continue to innovate and shape the future of healthcare.

The outcomes and statements provided by customers of Siemens Healthineers are unique to each customer's setting. Since there is no "typical" hospital and many variables exist (e.g., hospital size, case mix, and level of service/technology adoption), there can be no guarantee that others will achieve the same results.

On account of certain regional limitations of sales rights and service availability, we cannot guarantee that all products included in this brochure are available through the Siemens Healthineers sales organization worldwide. Availability and packaging may vary by country and is subject to change without prior notice. Some/All of the features and products described herein may not be available in the United States.

The information in this document contains general technical descriptions of specifications and options as well as standard and optional features, which do not always have to be present in individual cases.

Siemens Healthineers reserves the right to modify the design, packaging, specifications, and options described herein without prior notice. For the most current information, please contact your local sales representative from Siemens Healthineers.

Note: Any technical data contained in this document may vary within defined tolerances. Original images always lose a certain amount of detail when reproduced.

Siemens Healthineers Headquarters
Siemens Healthcare GmbH
Henkestr. 127
91052 Erlangen, Germany
Phone: +49 9131 84-0
siemens-healthineers.com

USA
Siemens Medical Solutions USA, Inc.
Healthcare
40 Liberty Boulevard
Malvern, PA 19355-9998, USA
Phone: +1-888-826-9702
siemens-healthineers.us

ARTIS icono

Cardiovascular interventions

siemens-healthineers.us/artis-icono



What if you could increase your confidence through interventions with the latest technology at your fingertips?

18.3 million

Approximately 18.3 million coronary artery disease procedures are performed worldwide per year. These are more than 38,000 procedures per day.



Affordable floor system with ceiling-like performance



Revolutionary dose-image optimization and quality

By automatically unleashing up to 15,000 possible combinations of our proprietary, next-level Automated Exposure Control (AEC) parameters, OPTIQ automatically selects a low dose for your preferred image quality level.



Patients with severe heart conditions can have challenging BMIs

The imaging chain will now assess patient size and keep their imaging preferences standard. Without it, you could be sacrificing image quality for larger patients.



Expedite your workflow with one-click Case Flows

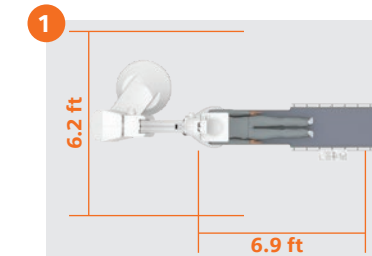
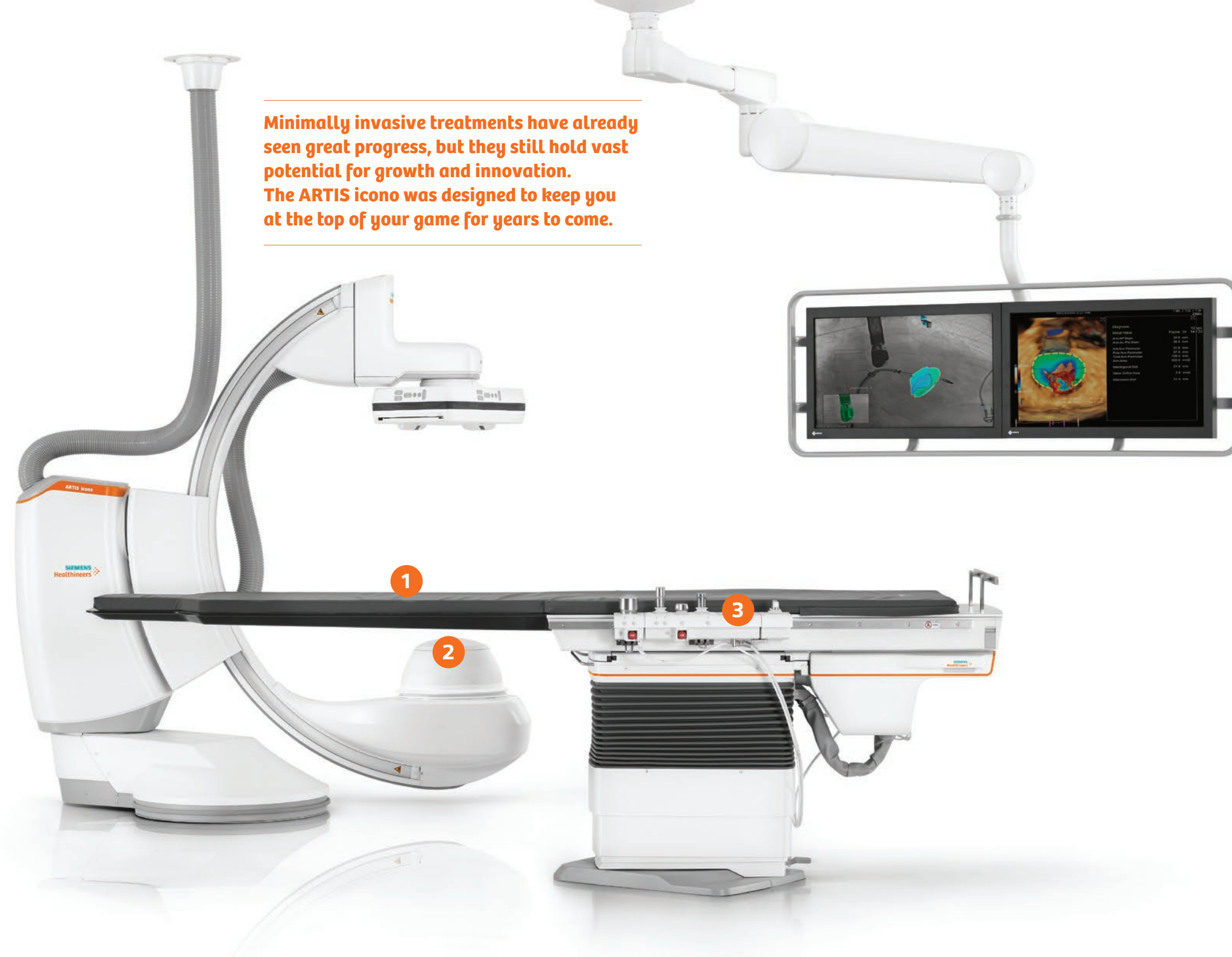
Eliminate the need to adjust parameters manually for each pre-, intra-, and post-procedural step, personalized based on your preferences.



Next-Generation open connectivity and communication

Connect relevant systems via standard protocols and a unified interface to support research and the development of new, in-house applications as well as integration with the Siemens Healthineers Digital Ecosystem.

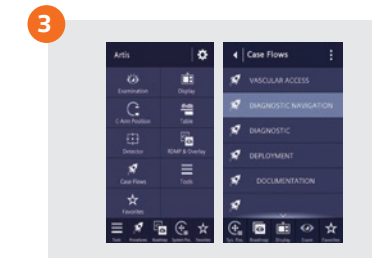
Minimally invasive treatments have already seen great progress, but they still hold vast potential for growth and innovation. The ARTIS icono was designed to keep you at the top of your game for years to come.



Unlimited positioning and flexibility
ARTIS icono floor provides ceiling-like flexibility with no limits. With a 45% smaller footprint, it can be easily installed in rooms as small as 269 sq. ft., while providing patient coverage for up to 6.2 feet latitudinally and 6.9 feet longitudinally.



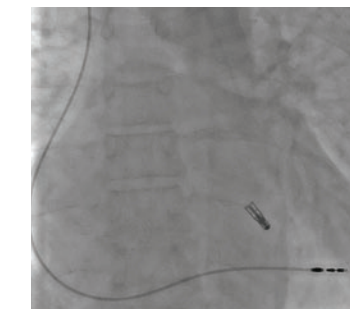
Up to 40% greater fluoro power
With small focal spot—ideal for larger patients and to achieve steeper angles.



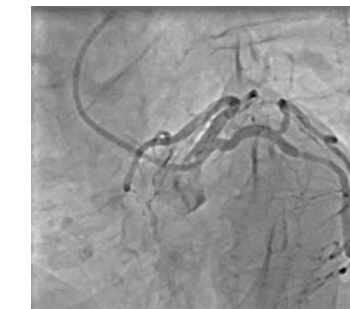
Personalized, standardized workflows
In addition to its new slimline table-side control design, ARTIS icono improves standardization with Case Flows, which can dramatically reduce the number of interactions required with the system by up to 80%.



Left-side position for structural heart procedures
Keeps the head side free for anesthesia or transesophageal echo (TEE) for procedures such as patent foramen ovale (PFO) closure.



Right-side position for arrhythmias
Provides dedicated working position to optimize device implantations such as Pacemakers.



Head-side position for PCI procedures
No limitations even in steep angulations such as Spider View as seen here with pristine image quality of the coronaries.

