

# ARTIS icono for interventional radiology

# One system. Infinitely adaptive.

As additional treatments are moved to a minimally invasive approach and as those procedures themselves become increasingly complex—are you ready?

Being able to accommodate a variety of procedure types while minimizing cost is becoming more critical. For example, transradial procedures can shorten the post-procedural stay by 50% to one hour.<sup>1</sup> This allows you to optimize patient care and efficiency, thereby improving clinical outcomes.

## Improve your outcomes through:

- A groundbreaking approach to an optimal balance of image quality and dose
- Optimal patient access for all procedures through revolutionary system flexibility
- Maximized room utilization to support multidisciplinary teams

<sup>1</sup>Kis B, Mills M, Hoffs S. Hepatic radioembolization from transradial access: initial experience and comparison to transfemoral access. *Diagnostic and Interventional Radiology*. 2016 Sep;22(5):444-449.

At Siemens Healthineers, our purpose is to enable healthcare providers to increase value by empowering them on their journey toward expanding precision medicine, transforming care delivery, and improving patient experience, all enabled by digitalizing healthcare.

An estimated 5 million patients globally benefit every day from our innovative technologies and services in the areas of diagnostic and therapeutic imaging, laboratory diagnostics, and molecular medicine, as well as digital health and enterprise services.

We're a leading medical technology company with over 120 years of experience and 18,500 patents globally. With about 50,000 dedicated colleagues in over 70 countries, we'll continue to innovate and shape the future of healthcare.

The outcomes and statements provided by customers of Siemens Healthineers are unique to each customer's setting. Since there is no "typical" hospital and many variables exist (e.g., hospital size, case mix, and level of service/technology adoption), there can be no guarantee that others will achieve the same results.

On account of certain regional limitations of sales rights and service availability, we cannot guarantee that all products included in this brochure are available through the Siemens Healthineers sales organization worldwide. Availability and packaging may vary by country and is subject to change without prior notice. Some/All of the features and products described herein may not be available in the United States.

The information in this document contains general technical descriptions of specifications and options as well as standard and optional features, which do not always have to be present in individual cases.

Siemens Healthineers reserves the right to modify the design, packaging, specifications, and options described herein without prior notice. For the most current information, please contact your local sales representative from Siemens Healthineers.

Note: Any technical data contained in this document may vary within defined tolerances. Original images always lose a certain amount of detail when reproduced.

<b>Siemens Healthineers Headquarters</b> Siemens Healthcare GmbH Henkestr. 127 91052 Erlangen, Germany Phone: +49 9131 84-0 siemens-healthineers.com	<b>USA</b> Siemens Medical Solutions USA, Inc. Healthcare 40 Liberty Boulevard Malvern, PA 19355-9998, USA Phone: +1-888-826-9702 siemens-healthineers.us
---	---

# ARTIS icono

# Interventional radiology

[siemens-healthineers.us/artis-icono](https://siemens-healthineers.us/artis-icono)



*What if you could better meet  
the increasing demand,  
diversity, and complexity of  
interventional procedures?*



## More treatments

are moving to minimally  
invasive approaches.

**To perform advanced procedures on an increased number of patients, an ideal system should adapt effortlessly to your needs**



### Revolutionary dose-image optimization and quality

By automatically unleashing up to 15,000 possible combinations of our proprietary, next-level Automated Exposure Control (AEC) parameters, OPTIQ automatically selects a low dose for your preferred image quality—regardless of patients' BMI.



### Expedited procedures with one-click Case Flows

- Personalize procedure settings based on your preference
- Eliminate the need to adjust parameters manually for each pre-, intra-, and post-procedural step
- Standardize across users and procedure protocols



### Support for a vast variety of procedures on one system

Engineered with ceiling-like flexibility to cover a full range of procedures from head to toe.



## One system.

6.2-ft. lateral coverage  
optimal radial access



Emergency parking  
position



Head access during  
complex procedures



From  either  side

Left-side working position



Right-side working position



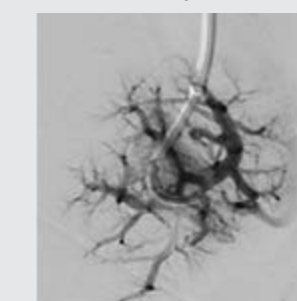
## Infinitely adaptive.

syngo DynaCT



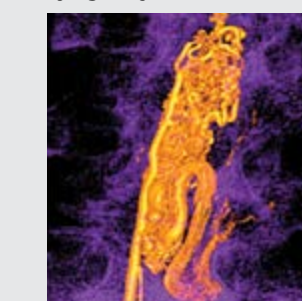
Knee AVM

DSA Roadmap

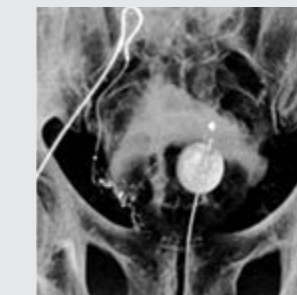


TIPS

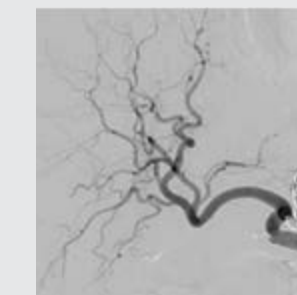
syngo DynaCT 3D



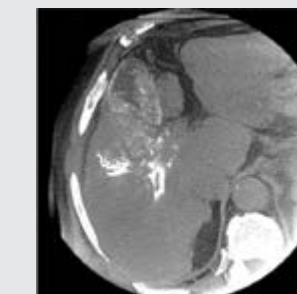
Spine AVM Pediatric  
Low Dose



PAE Planning (5'10" patient)



Celiac Trunk Coiling



TACE

- Access the patient according to your interventional needs
- ARTIS icono provides both left- and right-side working positions