

**ARTIS icono for Neurointerventions**

# Unseen possibilities. Made visible.

With the number of stroke patients rising steadily, you and your stroke center colleagues face a significant challenge: treating more patients overall and treating each one faster. To improve clinical outcomes, you need to visualize the finest details quickly.

**With next-generation features and options, this icon of innovation can help you to:**

- Visualize previously unseen anatomy for more confident diagnosis and intervention
- Revolutionize dose-image optimization and quality of care
- Expedite procedures with one click

At Siemens Healthineers, our purpose is to enable healthcare providers to increase value by empowering them on their journey toward expanding precision medicine, transforming care delivery, and improving patient experience, all enabled by digitalizing healthcare.

An estimated 5 million patients globally benefit every day from our innovative technologies and services in the areas of diagnostic and therapeutic imaging, laboratory diagnostics, and molecular medicine, as well as digital health and enterprise services.

We are a leading medical technology company with over 170 years of experience and 18,000 patents globally. With more than 48,000 dedicated colleagues in 75 countries, we will continue to innovate and shape the future of healthcare.

The outcomes and statements provided by customers of Siemens Healthineers are unique to each customer's setting. Since there is no "typical" hospital and many variables exist (e.g., hospital size, case mix, and level of service/technology adoption), there can be no guarantee that others will achieve the same results.

On account of certain regional limitations of sales rights and service availability, we cannot guarantee that all products included in this brochure are available through the Siemens Healthineers sales organization worldwide. Availability and packaging may vary by country and is subject to change without prior notice. Some/All of the features and products described herein may not be available in the United States.

The information in this document contains general technical descriptions of specifications and options as well as standard and optional features, which do not always have to be present in individual cases.

Siemens Healthineers reserves the right to modify the design, packaging, specifications, and options described herein without prior notice. For the most current information, please contact your local sales representative from Siemens Healthineers.

Note: Any technical data contained in this document may vary within defined tolerances. Original images always lose a certain amount of detail when reproduced.

**Siemens Healthineers Headquarters**  
Siemens Healthcare GmbH  
Henkestr. 127  
91052 Erlangen, Germany  
Phone: +49 9131 84-0  
siemens-healthineers.com

**USA**  
Siemens Medical Solutions USA, Inc.  
Healthcare  
40 Liberty Boulevard  
Malvern, PA 19355-9998, USA  
Phone: +1-888-826-9702  
siemens-healthineers.us

**ARTIS icono**

# Neuro- interventions

[siemens-healthineers.us/artis-icono](https://siemens-healthineers.us/artis-icono)



*What if you could minimize the risk  
of a missed diagnosis, decrease  
time to intervention, and support  
more complex procedures?*

**86 billion** 

A typical human brain  
has 86 billion neurons.  
Let's fight for every one.

## ARTIS icono is pioneered to exceed the standards in neurointerventions



### Revolutionary dose-image optimization and quality

By automatically unleashing up to 15,000 possible combinations of our proprietary, next-level Automated Exposure Control (AEC) parameters, OPTIQ automatically selects a low dose for your preferred image quality—regardless of C-arm angulation and procedure.



### Expedite stroke procedures

- **Twin Spin** – Switching smoothly between 2D biplane and 3D imaging without the need to park the lateral plane.
- **syngo DynaCT Sine Spin** – A new double oblique trajectory movement to overcome artifacts from the massive bony structures that surround the basal part of the brain, taking 3D whole-brain imaging to new levels of quality and consistency.
- **syngo DynaCT Multiphase** – You can now save time by visualizing collateral vessels right in the angio suite. syngo DynaCT Multiphase depicts up to 10 different time points within a period of ~60 seconds or less.



### Set up procedures with one click – Case Flows

Eliminate the need to adjust parameters manually for each pre-, intra-, and post-procedural step.

**26% growth** 

Mechanical thrombectomy  
procedure growth.

**1.9 million** 

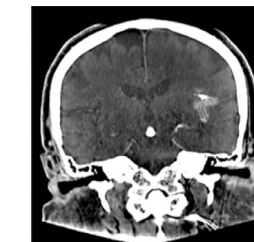
The typical patient loses  
1.9 million neurons each minute  
a stroke is untreated.<sup>1</sup>

<sup>1</sup>[www.ahajournals.org/doi/full/10.1161/01.STR.0000196957.55928.ab](http://www.ahajournals.org/doi/full/10.1161/01.STR.0000196957.55928.ab)



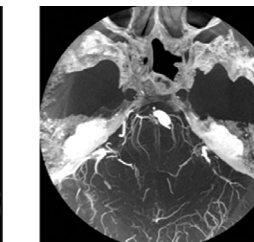
Minimally invasive treatments  
have already seen great progress,  
but they still hold vast potential  
for growth and innovation.  
The ARTIS icono was designed to  
keep you at the top of your game  
for years to come.

syngo DynaCT  
Sine Spin



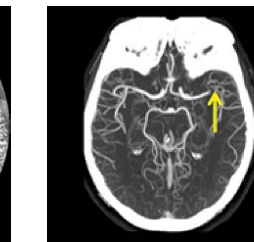
Bleeding

syngo DynaCT  
Micro



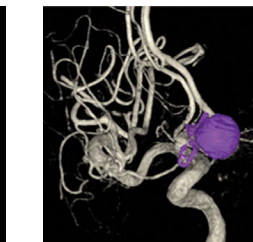
Perforating Vessels

syngo DynaCT  
Multiphase



Good Collaterals

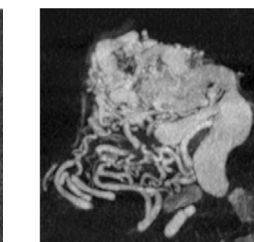
syngo Dyna 3D



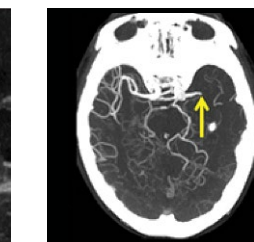
Dual Volume



Calcification in Stent



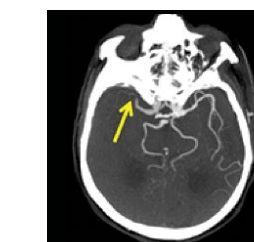
AVM



Medium Collaterals



Aneurysm Guidance



Poor Collaterals

Clarity and  
detail like  
never before