



NEW

MSDH

PORTABLE FERROMAGNETIC DETECTOR FOR THE SAFETY OF PATIENTS AND SYSTEMS IN MRI FACILITIES

**HIGH
SENSITIVITY TO
FERROMAGNETIC
METALS**

**READY TO USE,
NO INSTALLATION
REQUIRED**

**ONE-PIECE AND
LIGHTWEIGHT
DESIGN**

[TOTAL WEIGHT
ONLY 9,5 KG]

**EXTREMELY
DURABLE
AND RELIABLE**

- PREVENTIVE DETECTION OF FERROMAGNETIC OR MAGNETIZED OBJECTS which can cause damage due to the attraction of the magnet in MRI rooms
- HIGH AND UNIFORM SENSITIVITY TO FERROMAGNETIC ITEMS
- Accurate localization at 360° by means of MULTI-ZONE ACOUSTIC AND OPTICAL ALARM SIGNALING
- EXTREMELY DURABLE DESIGN including stainless steel and high impact reinforced plastics
- IT CAN OPERATE IN ANY LOCATION in Zone I, II or III
- UP TO 70,000 EVENTS CAN BE RECORDED locally [FIFO LOGGER] with traceability of the alarms, programming modifications and diagnostics
- PROGRAMMING of operational parameters and DOWNLOADING OF DATA LOGGER by smartphone or portable PC
- Built-in battery power supply with 26-HOUR BATTERY LIFE or with AC/DC external adapter
- Large number of CEIA MSD ferromagnetic detectors installed



www.ceia.net

CEIA reserves the right to make changes, at any moment and without notice, to the models (including programming), their accessories and options, to the prices and conditions of sale. DP220K0004v2000hEN

MSDH SPECIFICATIONS

CONTROLS AND INDICATORS

ON/OFF push-button	
4-key keypad, for programming and status readout	
Programming of operational parameters and downloading of data logger by smartphone or portable PC	
SECURITY	<ul style="list-style-type: none"> • Password protected programming at User and Supervisor level
MULTI-COLOR STATUS AND ALARM WARNING LIGHT	<div> <div>GREEN LIGHT</div> <div>YELLOW LIGHT</div> <div>RED LIGHT</div> </div> <ul style="list-style-type: none"> • Normal operation, no alarm • Detection of ferromagnetic object below alarm threshold • Detection of ferromagnetic object above alarm threshold: <ul style="list-style-type: none"> - Full height alarm indication - Indication proportional to signal intensity - Alarm indication with 5 different localization zones - Full height alarm indication, followed by zonal signalling • Blinking light: diagnostics alarm • Connecting BT device in progress
ALARM SOUNDER	<ul style="list-style-type: none"> • Alarm indication for target over the alarm threshold: <ul style="list-style-type: none"> - Fixed tone - Tone proportional to signal intensity - Single pulse for pinpointing target • Alarm tone can be selected, continuous and intermittent • Self-diagnostics signal: intermittent tone
BT HEADSET (ACCESSORY)	<ul style="list-style-type: none"> • Copies all acoustic indications, with the addition of checking BT connection

POWER SUPPLY

AC/DC external power adapter	100 ... 240 V~ , 47...63Hz, 40W
Embedded rechargeable battery	16h typical / 17h max. of continuous operation with 3 h battery charge 24h typical / 26h max. of continuous operation with 4.5 h battery charge

DETECTOR ENVIRONMENTAL CONDITIONS

Working temperature	-10°C to +65°C
Storage temperature	-37°C to +70°C
Relative humidity	0 to 95%, non-condensing

WEIGHT

- MSDH: 9,5 kg • Carrying case: 0,6 Kg • AC/DC adapter: 0,7 Kg • Installation kit: 0,3 kg
- BT kit: 0,2 kg (includes battery charger)

MSD DIMENSIONS

Height: 1900 mm	Width: 330 mm
-----------------	---------------

SHIPPING INFORMATION

Dimensions (WxDxH)	400 mm x 2000 mm x 480 mm
Weight	24 kg

DEGREE OF PROTECTION IP65 for indoor and outdoor use

AVAILABLE ACCESSORIES

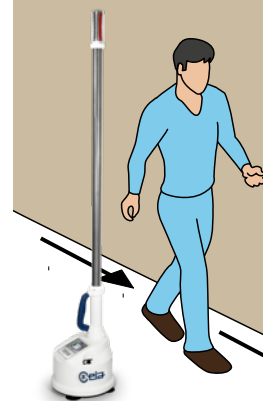


EVO function activation	code 88918
BT audio function activation, headset and charger	code 88919
MSD-RRU Remote Relay Unit	code MSD-RRU
App CEIA FMD: the application allows monitoring of the device, adjustment of the settings and downloading of data logger. Available on Google Play Store. REQUIREMENTS: Android 7.0 or later, BT interface available	-
Solid Rubber feet	code 92799
MSD Demo Kit - Kit of demonstration objects, consisting of: BT headset • Hair pins • Hospital pager • Magnet • Medical scissors • Micro cell phone • Micro smartphone • Needle • Razor blades	code 89052
MSDH Maintenance Kit	code 91541
Standing mat: self-adhesive mat with indication of position and rotation	code 94590

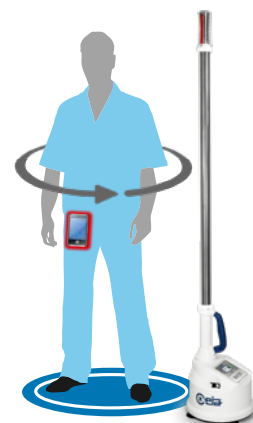
CERTIFICATION AND COMPLIANCE

Safe for use for pacemakers and other medical implants
Compliant with the applicable electromagnetic Standards on Human Exposure and pacemaker safety
Compliant with and certified to the applicable International Standards for electrical safety and EMC

STANDALONE CONFIGURATION



PASS-BY OPERATION



ROTATE-BY OPERATION

PASS-THROUGH CONFIGURATION



CEIA - Zona Industriale 54, 52041 Viciomaggio - Arezzo [ITALY]
 T +39 0575 4181 • F +39 0575 418298 • E infosecurity@ceia-spa.com

www.ceia.net

