

On account of certain regional limitations of sales rights and service availability, we cannot guarantee that all products included in this brochure are available throughout the Siemens sales organization worldwide. Availability and packaging may vary by country and are subject to change without prior notice. Some/All of the features and products described herein may not be available in the United States or other countries.

The information in this document contains general technical descriptions of specifications and options as well as standard and optional features that do not always have to be present in individual cases. Siemens reserves the right to modify the design, packaging, specifications and options described herein without prior notice. Please contact your local Siemens sales representative for the most current information. Caution: Federal law restricts this device to sale by or on the order of a physician.

The statements by Siemens' customers described herein are based on results that were achieved in the customer's unique setting. Since there is no "typical" hospital and many variables exist (e.g., hospital size, case mix, level of IT adoption) there can be no guarantee that other customers will achieve the same results.

* TrueFusion represents a workflow consisting of syngo TrueFusion (syngo X Workplace) and TrueFusion echo-fluoro guidance (ACUSON SC2000™ Ultrasound System, PRIME edition).



TrueFusion*

Take your therapy further in structural heart disease

Siemens Healthineers Headquarters
Siemens Healthcare GmbH
Henkestr. 127
91052 Erlangen
Germany
Phone: +49 9131 84-0
[siemens.com/healthineers](https://www.siemens.com/healthineers)



Share Perspectives

Improve Orientation

Integrated Efficiency

When expert teamwork is a must ...

Treatment options for structural heart disease (SHD) are developing with breathtaking speed. However, the multidisciplinary and multimodality approach of these new interventions places high demands on cardiac teams and their imaging systems. Master these challenges with a solution that enables efficient teamwork and seamless integration of ultrasound and angiographic imaging.

... rely on truly integrated imaging **TrueFusion***

When treating structural heart disease, advanced real-time 3D TEE and True Volume color Doppler imaging is required to visualize form, function, and flow in one volume view – without compromise. In transcatheter approaches, however, navigation relies on live fluoroscopy as well. With TrueFusion*, add the relevant anatomical and functional landmarks easily from market-defining True Volume TEE from Siemens Healthineers to your live fluoroscopy.

“For me, TrueFusion facilitates orientation in the mitral and tricuspid space and I see potential to save fluoro time and contrast.”*

Prof. Holger Nef, MD,
Deputy Director, Department of Cardiology and Angiography,
University Hospital of Giessen and Marburg, Germany

Share perspectives efficiently

Multimodality imaging and multidisciplinary clinical teams need well-orchestrated coordination for successful outcomes. syngo TrueFusion merges the relevant imaging information in one view and provides a common orientation. Fused images can be integrated efficiently in complex interventions with the robust co-registration of ACUSON SC2000™ PRIME and Artis angiography using eSie sync, a dedicated probe design, and automated co-registration updates. Synchronized TEE and angio images makes both communication and orientation easier for the entire team.

Navigate with improved orientation

Through seamless integration with TrueFusion echo-fluoro guidance, TEE landmarks can be marked directly on the ACUSON SC2000™ PRIME ultrasound system and sent for fusion with the Artis live fluoroscopic images. Interventionalists benefit from target-oriented navigation and can thus focus on successful device placement. To support anatomical orientation, one-click eSie Valves™ modelling can be used at any time to fuse aortic or mitral valve structures with live fluoroscopy. Deployment angles can be derived using just TEE, offering scope for contrast and fluoro time savings.



Ultrasound

Improve your imaging options and efficiency with the only platform that can deliver 2D and 3D TTE, TEE, and ICE imaging.

ACUSON SC2000™ PRIME provides a comprehensive cardiovascular ultrasound solution for fast, actionable understanding, based on advanced imaging and automation.

See the unseen

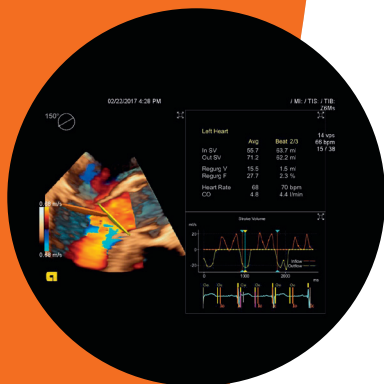
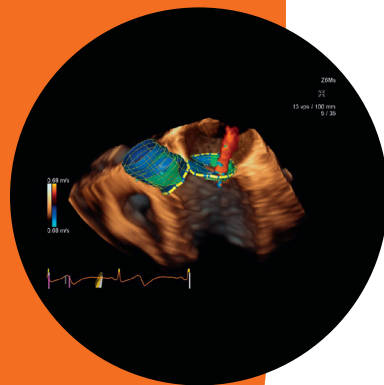
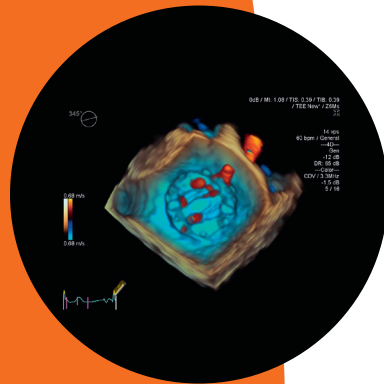
- Achieve uncompromised views of form, function, and flow with advanced 3D TEE with IN Focus coherent technology and real-time volume color Doppler.
- Visualize real-time volume and volume color Doppler in a 90° x 90° sector for all patients even those with arrhythmia in real time just like your 2D imaging.

Quantify every detail

- Quantify stroke volume and regurgitant volume with eSie Flow™ for quick comprehensive decisions during SHD interventions.
- Use eSieValves™ for fast, automated, modeling and measurements of aortic and mitral valves. Accurately size your TAVR devices even for patients with renal insufficiency.

Accelerate your workflow

- Guide your procedures efficiently with Septal Guide, a full suite of volume viewing tools: D'Art, Dual V, mitral valve button, and automated Doppler & EF measurements on TEE.
- Manage streamlined and uninterrupted procedures with our True Volume TEE's fully shielded design and improved thermal management.



Angiography

Rely on angiographic solutions that facilitate the growing number and complexity of SHD procedures, providing you with seamless workflows and high-quality 2D and 3D imaging.

Whichever member of the Artis with PURE® family best fits your particular clinical setting, benefit from the very latest PURE® software platform for greater efficiency and enhanced patient outcomes.

Count on excellent image quality

- Enable high contrast resolution even with steep angulations thanks to the powerful X-ray pulses of the unique flat emitter technology tubes from Siemens Healthineers.
- Make the most of your image with CLEARview for dose-adaptive noise reduction and CLEARmotion for efficient reduction of motion artifacts.
- Choose your preferred image appearance with CLEARchoice for customized image quality.

Achieve optimal low dose

- Optimize dose levels mostly fully automatically with the unique CARE (combined applications to reduce exposure) tools from Siemens Healthineers.
- Benefit from the unique crystalline silicon detector for improved visibility of your devices at ultra-low dose levels on Artis Q.zen and ARTIS pheno.

Overlay 3D anatomical information

- Match CT, MR or syngo DynaCT volumes easily to live fluoroscopy for reliable guidance with less contrast dye, especially when TEE is not an option.
- Find the ideal implantation angle for your device without fluoroscopy by synchronizing the C-arm projection.

Integrate recording and documentation

- Access patient vital signs, intracardiac measurements, and intuitive procedure documentation at bedside with Sensis Vibe's IPX4-compliant HemoBox.
- Boost your productivity through automated report generation and one-stop patient registration for Artis, Sensis Vibe, and ACUSON SC2000™ PRIME.

