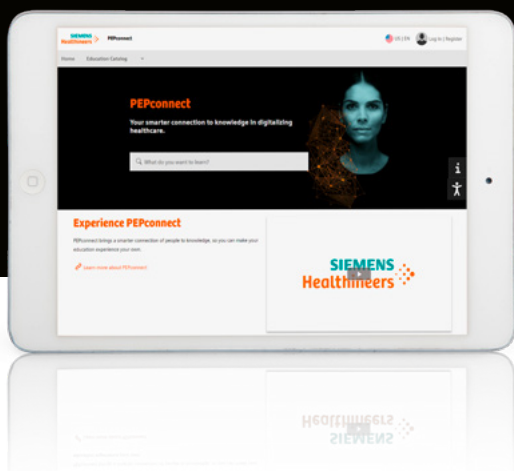


# PEPconnect & PEPconnections

Your smarter connection to knowledge in digitalizing healthcare

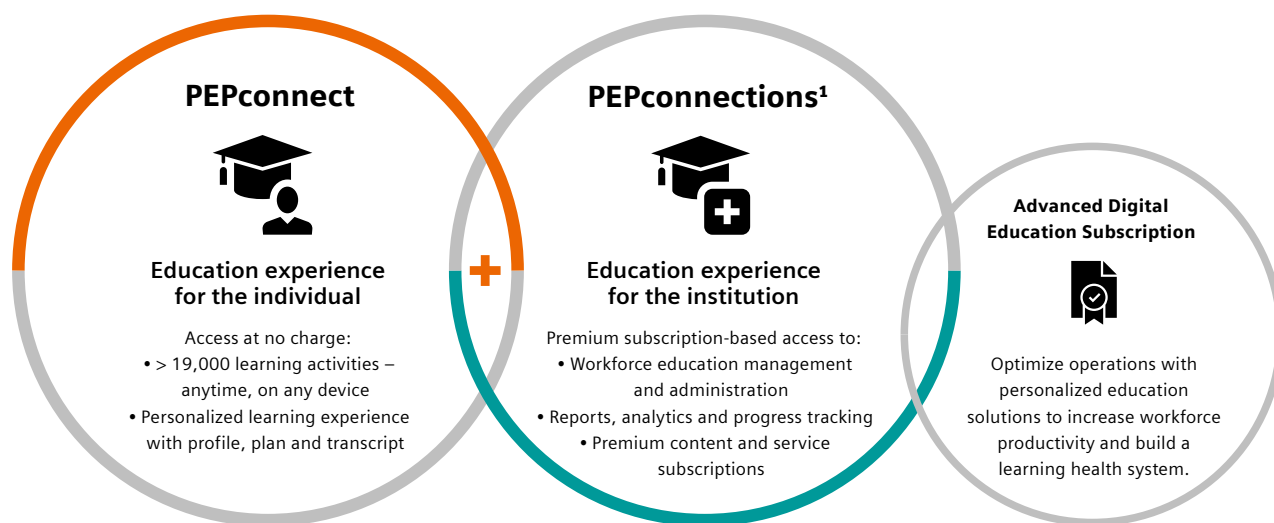


Standardization of care is high on the agenda of clinical institutions. It is viewed to help achieve excellent clinical results, increase safety, and reduce costs. Have you ever considered education as one lever to realize this goal?

The know-how and skill level of staff members affects their performance. Continuous education and training can enhance their confidence as well as consistency.

**PEPconnect** is our personalized online education experience designed for healthcare professionals that's customized to their role and learning behavior – designed to increase their competency, efficiency, and productivity.

**PEPconnections<sup>1</sup>** is a PEPconnect premium subscription, which supports your clinical institution's performance growth with integrated workforce education management and administration features.



<sup>1</sup> Subscription required. Availability of subscription depends on country.



# Holistically manage your staff's education

## PEPconnect



### My Education Space

Discover the broad portfolio of technical, clinical and operational education



### My Plan

Create your individual learning plan with self-selected learning activities based on your role and interests



### My Activity Feed

View and access your personalized activity feed



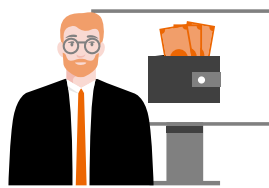
### My Groups

Engage in social learning and connect with others



### My Transcript

Record the completion and certificates of your learning activities



### Virtual Wallet

Purchase points to spend on additional subscriptions, virtual education options, or Continuing Education Credits (CECs)<sup>2</sup>

## PEPconnections<sup>1</sup>



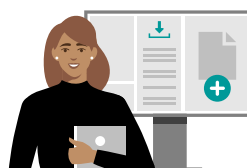
### Workforce Management & Administration

Assign, track, and manage the education of entire groups



### Group Learning Plans

Customize your workforce education and create learning plans specific to your staffs' roles and needs



### Virtual Library

Add your own or third party content for group access or assignment in Group Learning Plans



### Dashboard & Reporting

Access reports and dashboards on group and individual employee activity progress



New

### Advanced Digital Education Subscription

Expand on the essentials in our base offerings, adding PEPconnections<sup>1</sup>, advanced modality-specific content, and optional Virtual Wallet Points.



PEPconnect and PEPconnections your complete virtual education experience

## Siemens Healthineers Headquarters

Siemens Healthcare GmbH  
Henkestr. 127  
91052 Erlangen, Germany  
Phone: +49 9131 84-0  
siemens-healthineers.com

<sup>1</sup> Subscription required. Availability of subscription depends on country.

<sup>2</sup> Additional content subscriptions available for PEPconnections users based on country availability. Subscription can be acquired via virtual wallet points placed in contract, available in specific countries.

The products/features and/or service offerings (here mentioned) are not commercially available in all countries and/or for all modalities. If the services are not marketed in countries due to regulatory or other reasons, the service offering cannot be guaranteed. Please contact your local Siemens Healthineers organization for further details.