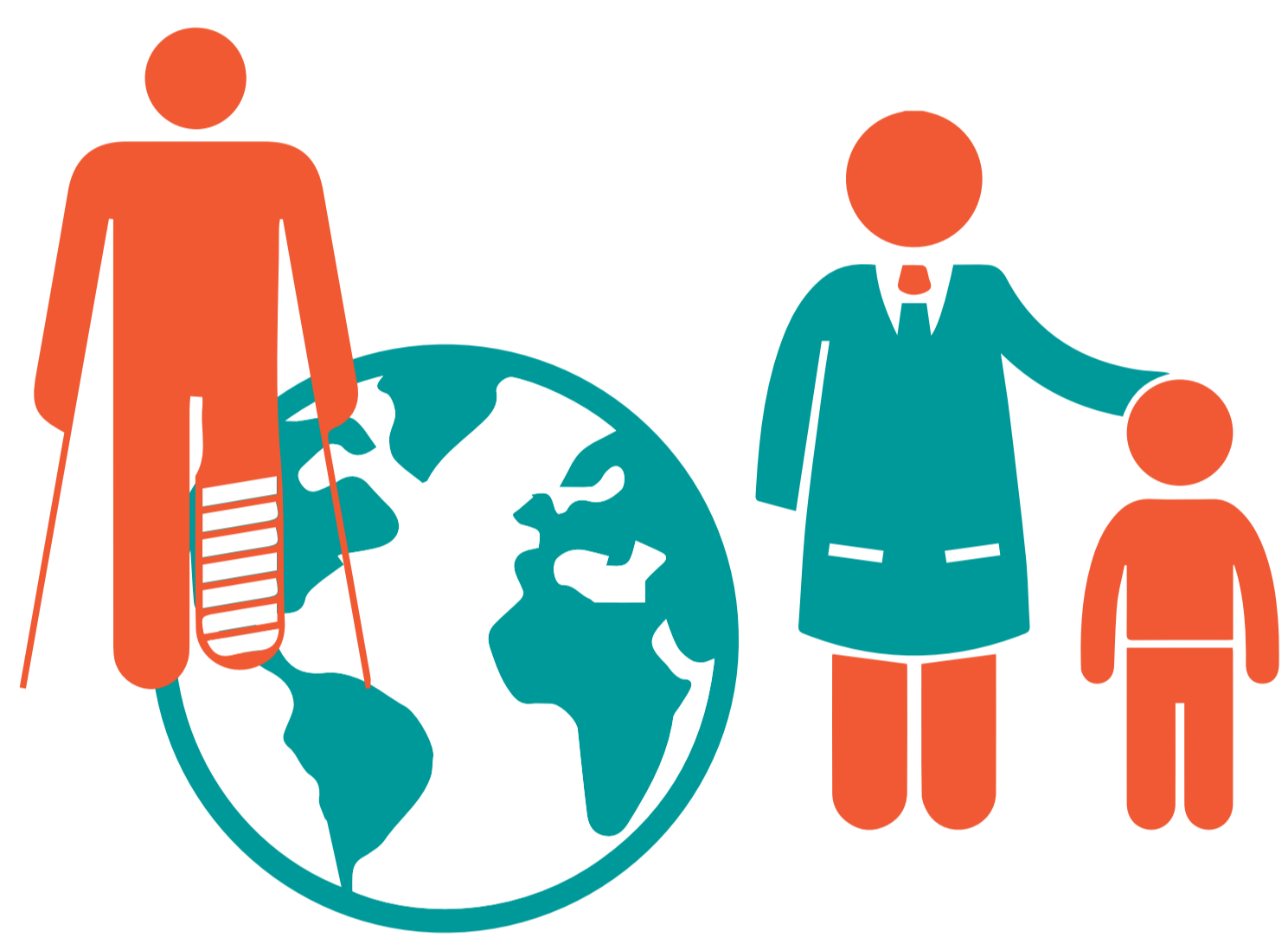
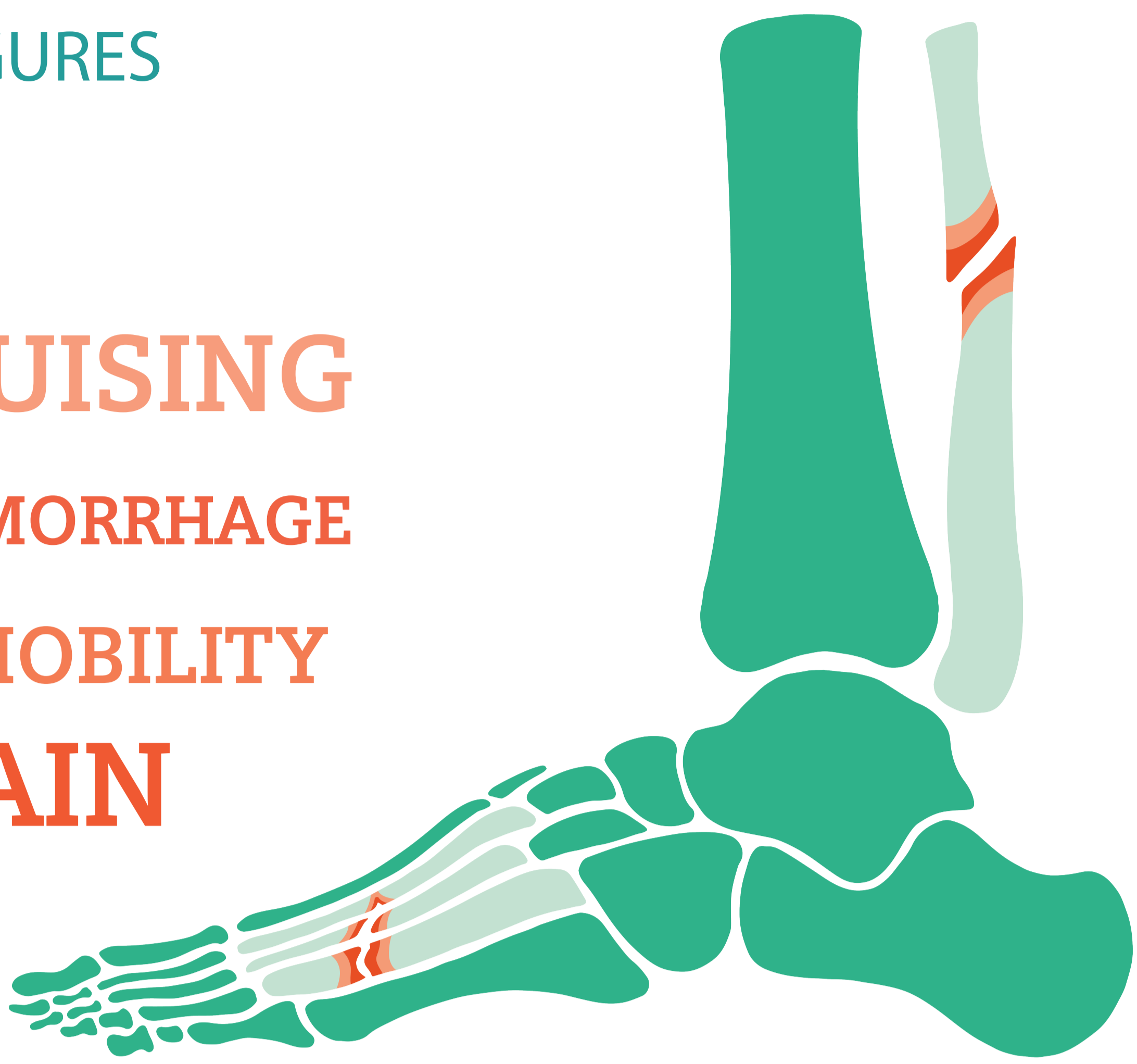


# TRAUMA

## FACTS & FIGURES

SWELLING  
BRUISING  
INTERNAL HAEMORRHAGE  
IMMOBILITY  
PAIN

2019  
UNITED STATES HAD OVER  
41 MILLION EMERGENCY VISITS  
DUE TO TRAUMATIC INJURIES



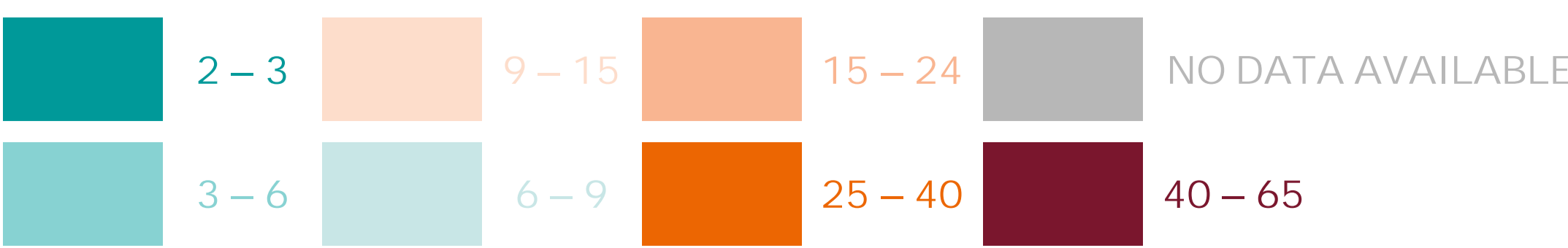
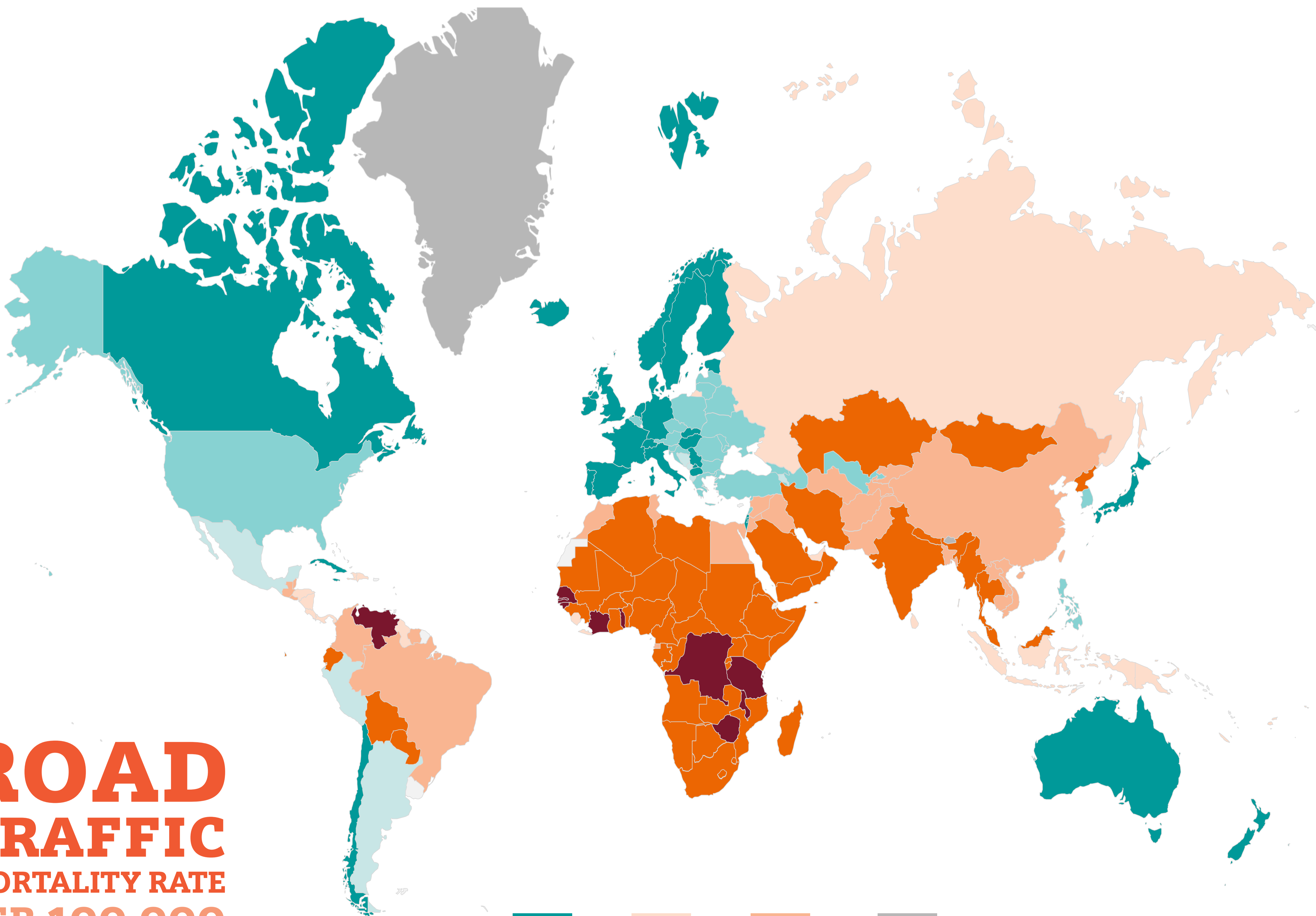
MORE THAN  
5 MILLION  
DEATHS PER  
YEAR DUE TO  
INJURY

1.2 MILLION  
PEOPLE ARE  
KILLED BY  
TRAFFIC CRASH  
EVERY YEAR

50% REDUCTION  
DUE TO LOCKDOWN AND  
SOCIAL DISTANCING  
COVID-19

90%  
OF INJURY RELATED  
DEATHS OCCUR IN  
LOW AND MIDDLE  
INCOME COUNTRIES

ROAD  
TRAFFIC  
MORTALITY RATE  
PER 100 000  
2016



1. W. (2014). Injuries and Violence The Facts 2014. Retrieved June 26, 2019, from [https://apps.who.int/iris/bitstream/handle/10665/149798/9789241508018\\_eng.pdf;jsessionid=571A40748AB0CE0F4D4CFABC57B75676?sequence=1](https://apps.who.int/iris/bitstream/handle/10665/149798/9789241508018_eng.pdf;jsessionid=571A40748AB0CE0F4D4CFABC57B75676?sequence=1) and <https://www.aast.org/trauma-facts>
2. N. (2015). Trauma Statistics & Facts. Retrieved June 18, 2019, from <https://www.nattrauma.org/what-is-trauma/trauma-statistics-facts/>
3. W. (2004). World report on road traffic injury prevention. Retrieved June 20, 2019, from <https://apps.who.int/iris/bitstream/handle/10665/42871/9241562609.pdf?sequence=1>
4. WHO, 2016: Monitoring Road Safety in the EU: towards a comprehensive set of Safety Performance Indicators
5. Violence prevention, WHO, 2022

Disclaimer: The Disease Pathways Framework could be used to elaborate on various diseases. The various pain points, solutions, and statistical data are examples only and cannot be taken as recommendations for the reader.

An extensive research-based analysis from 40+ scientific articles and journals in combination with hospital workflow experience allowed the identification of painpoints and solutions

These solutions were proposed based on AI, IoMT, AR/VR, Biosensors, nanorobotics and smart wearable technologies

THROUGH THIS CAREPLAN WE HIGHLIGHT DATA FROM A COLLECTION OF

25  
painpoints

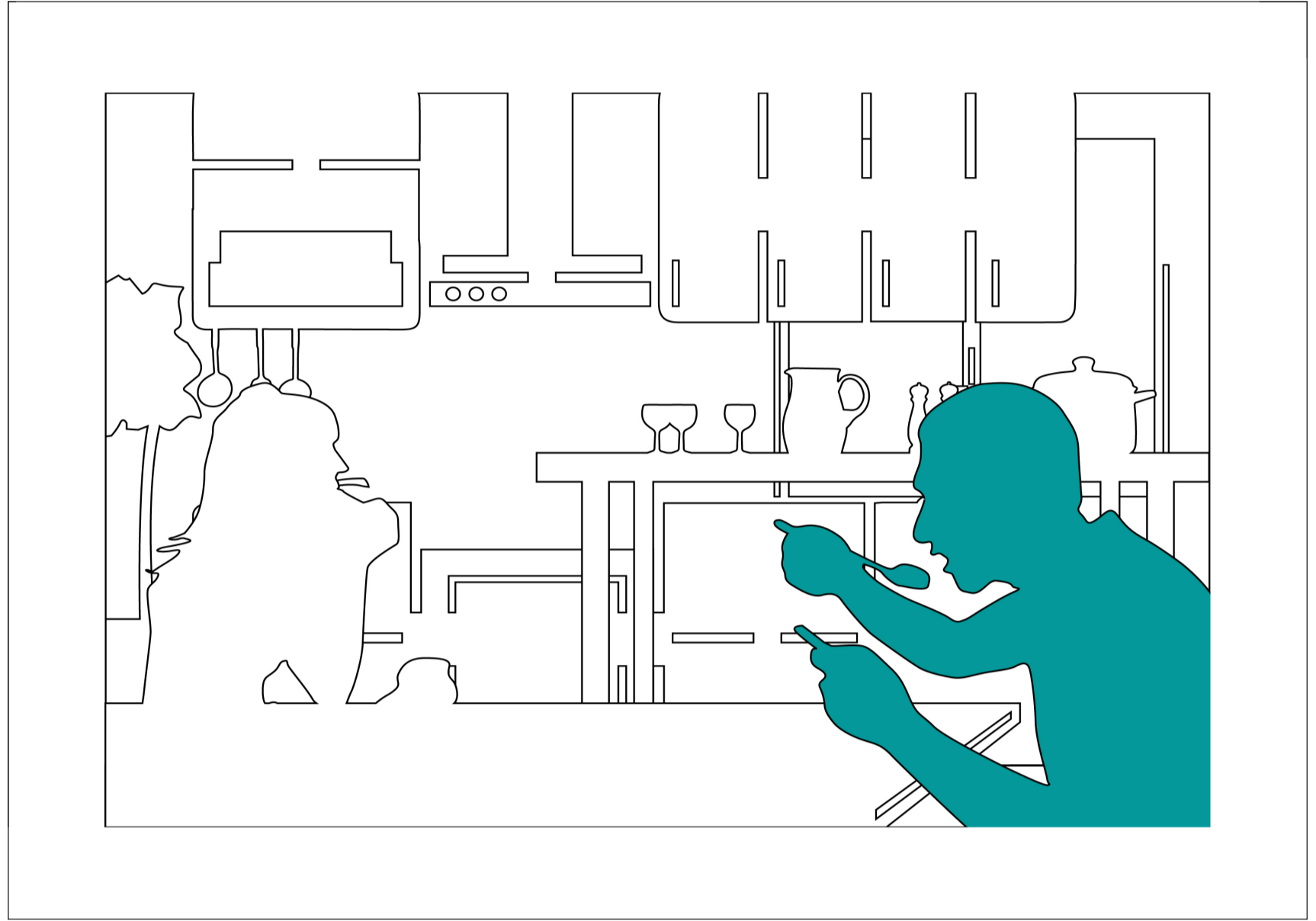
28  
respective  
solutions

are connected to  
different stakeholders

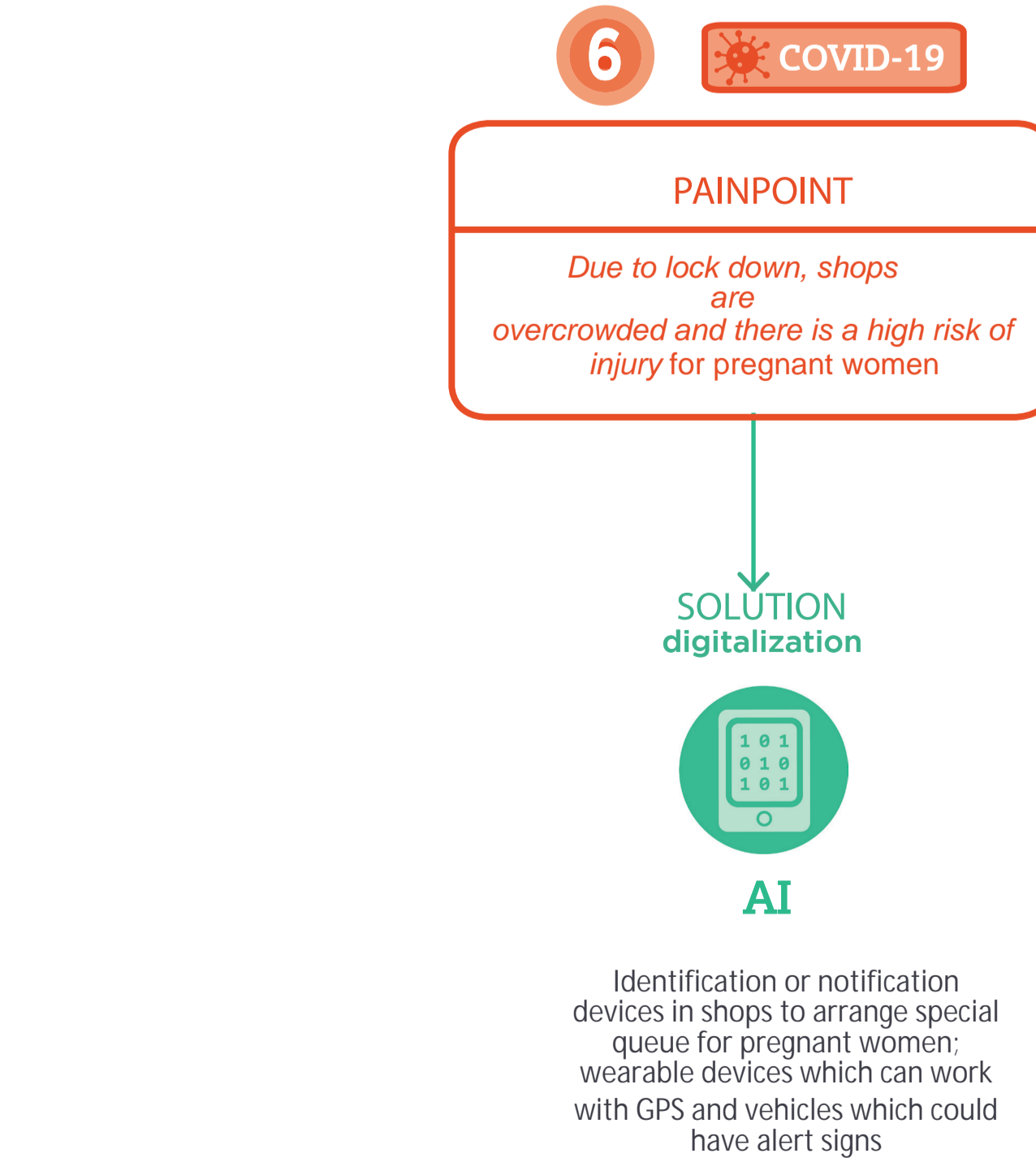
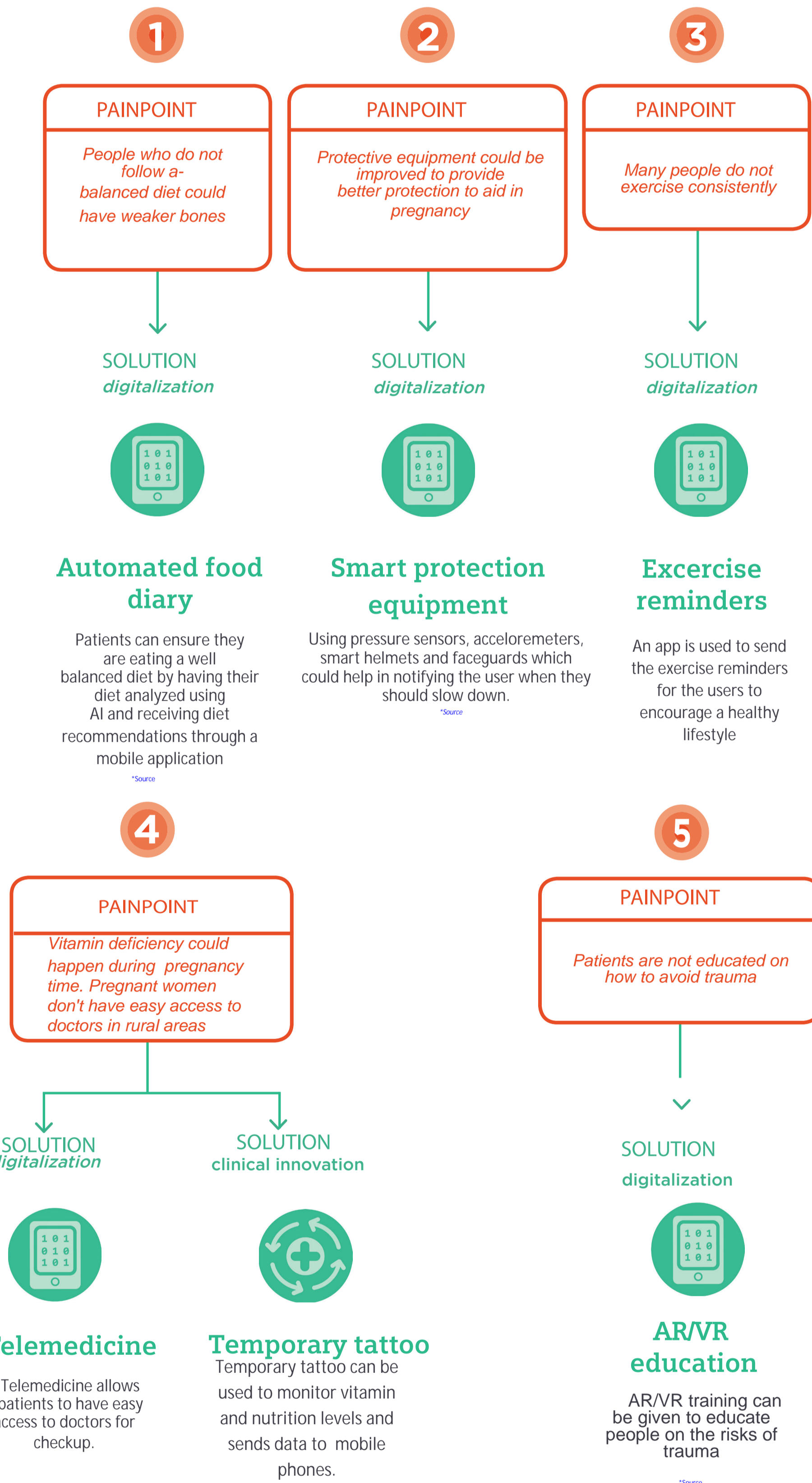
9

Disclaimer: The Disease Pathways Framework could be used to elaborate on various diseases. The various pain points, solutions, and statistical data are examples only and cannot be taken as recommendations for the reader.

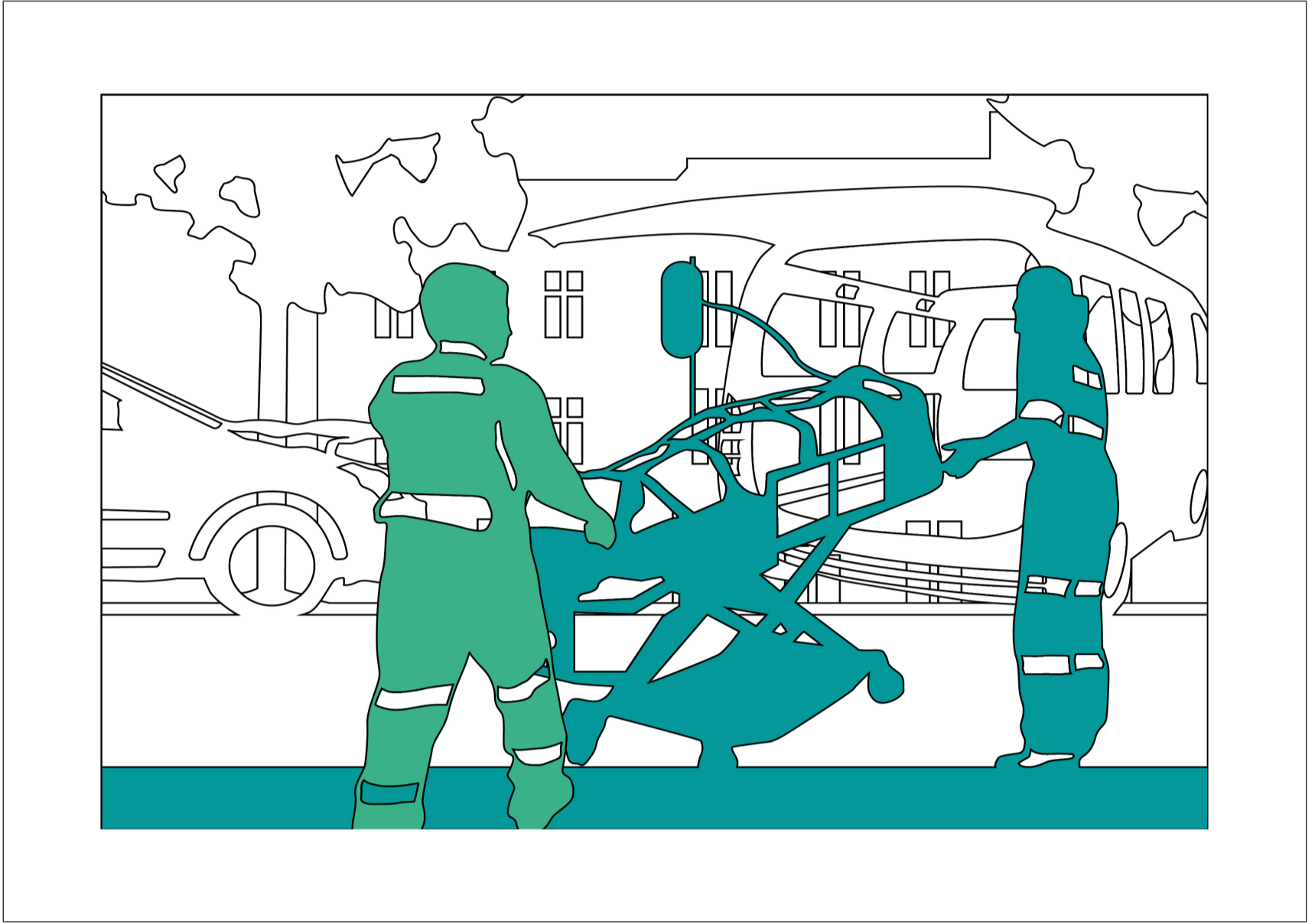
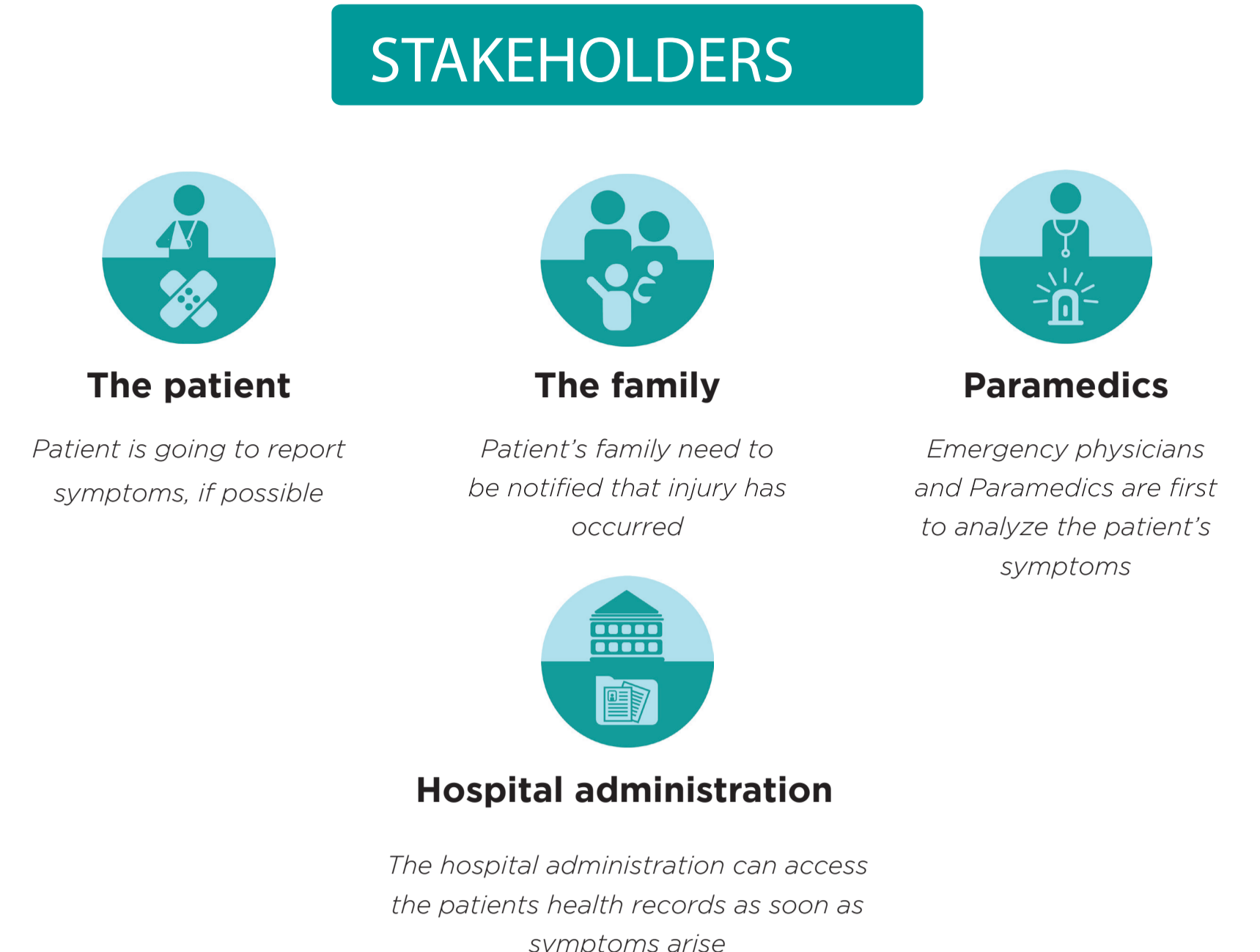
## 1 PRENATAL HOME



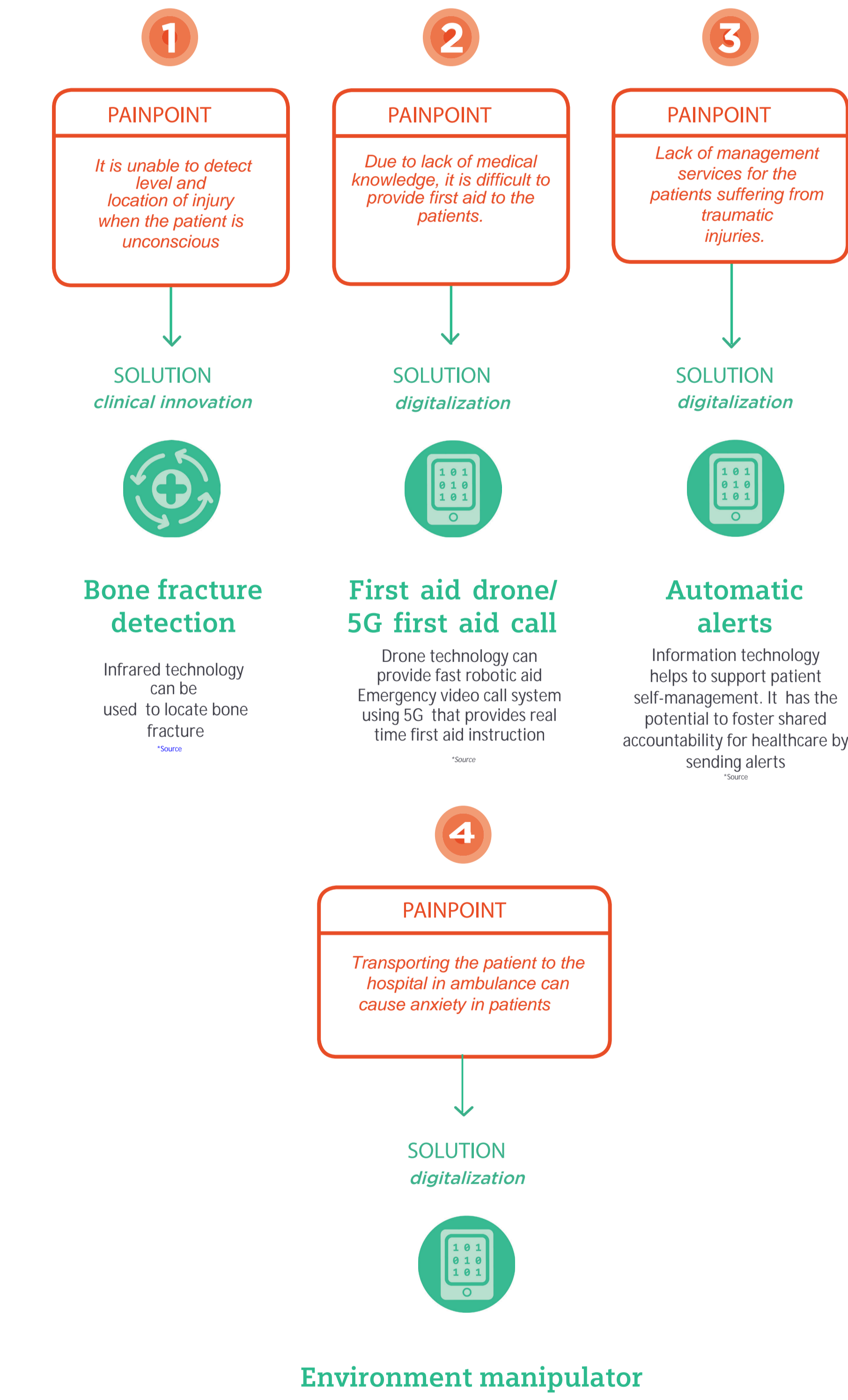
Regular medical checkup, balance diet and healthy weight reduces the severity of trauma incidents



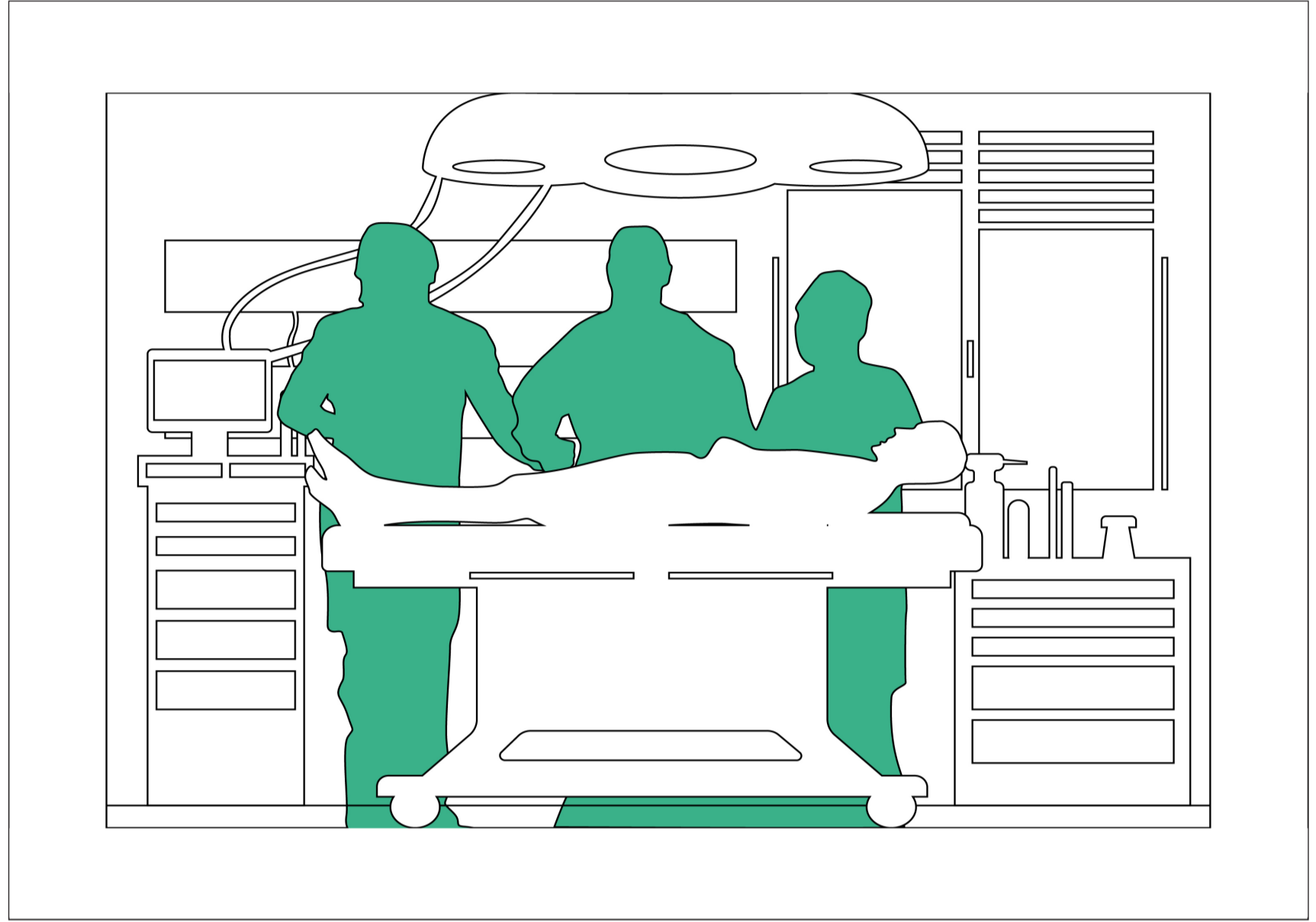
## 2 PREVENTION OUTSIDE



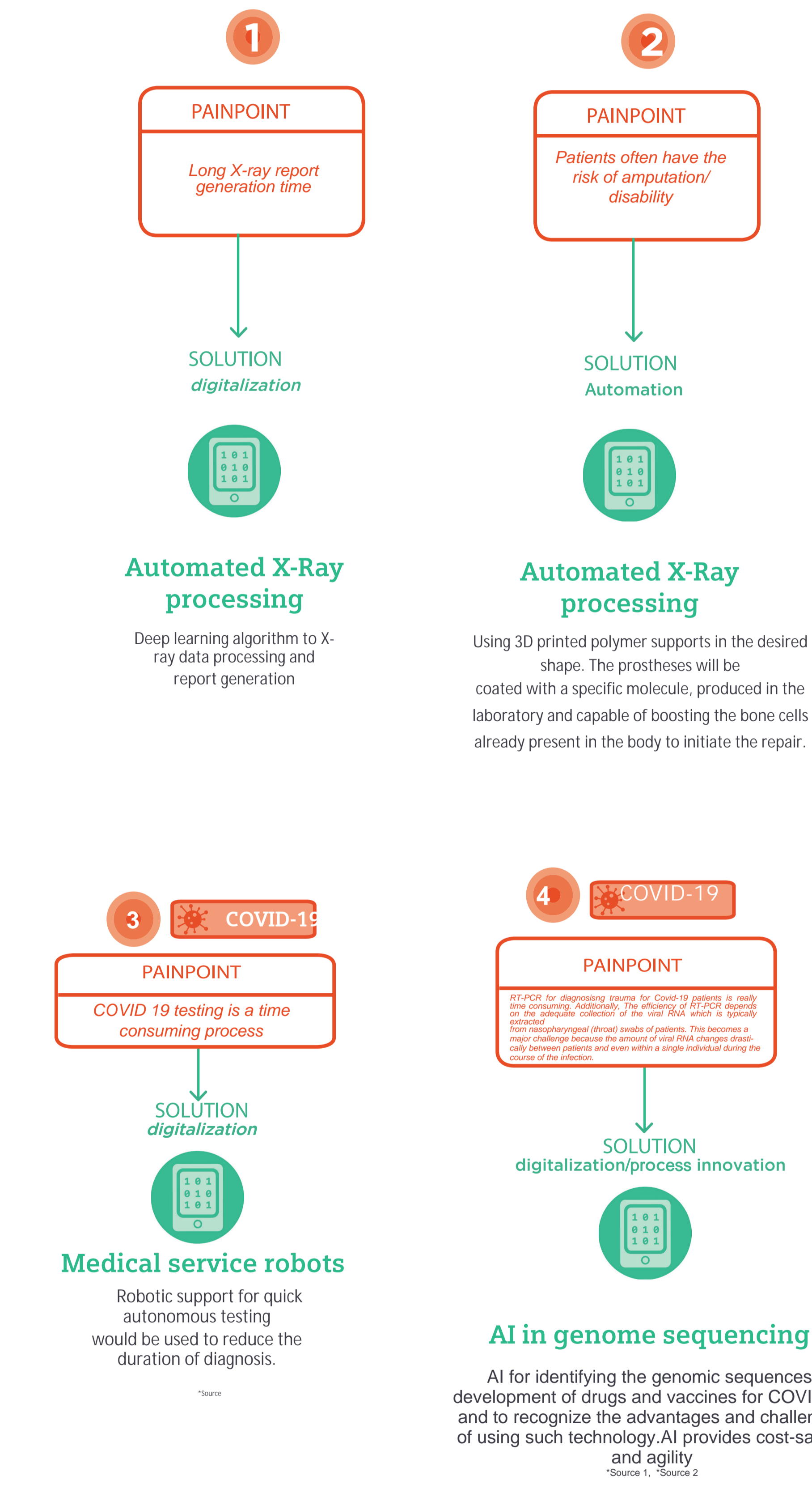
Benjamin, a 62-year old man, has been in a car accident



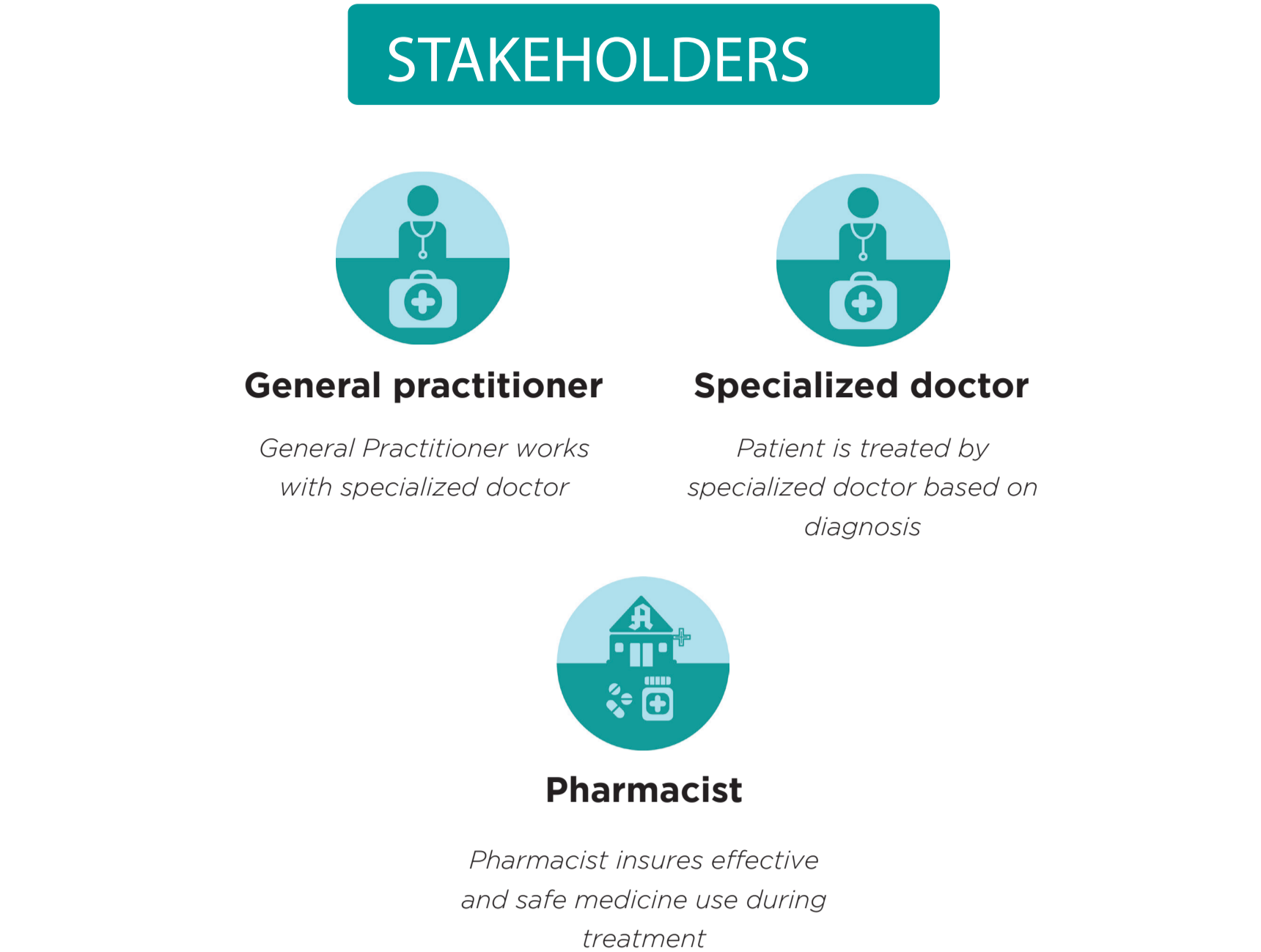
## 3 DIAGNOSIS HOSPITAL



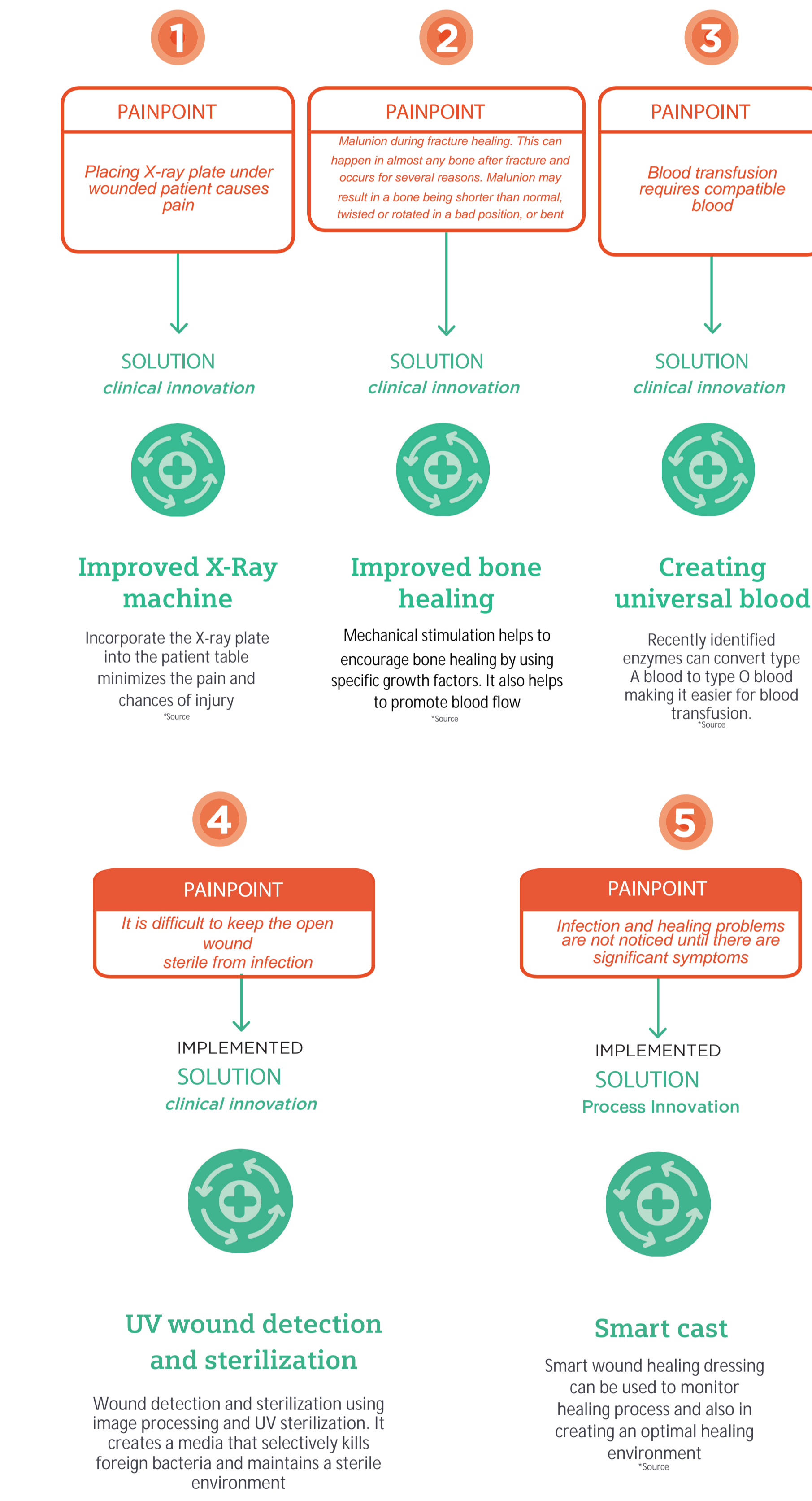
Patient undergoes numerous diagnostic tests in the Emergency Room



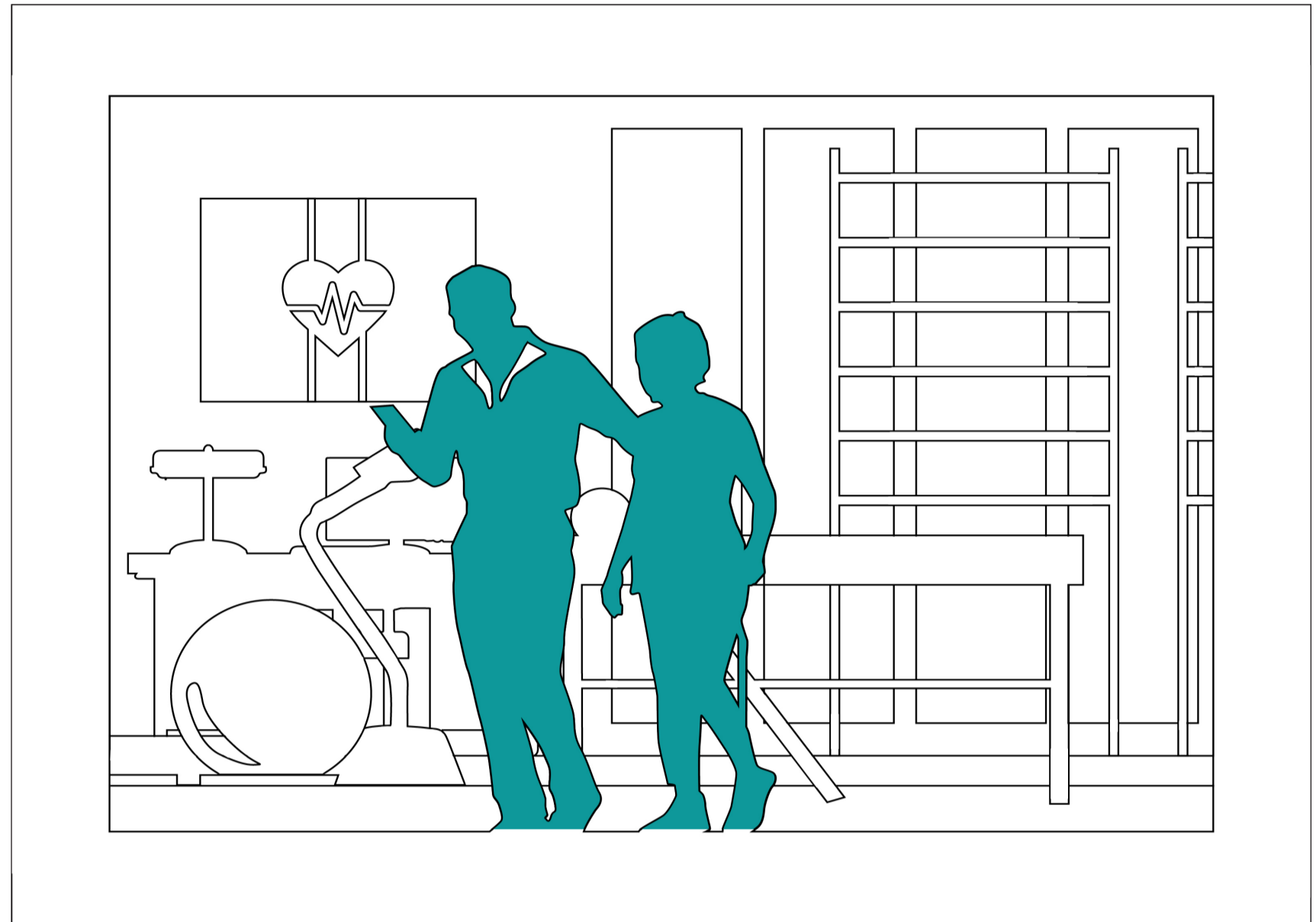
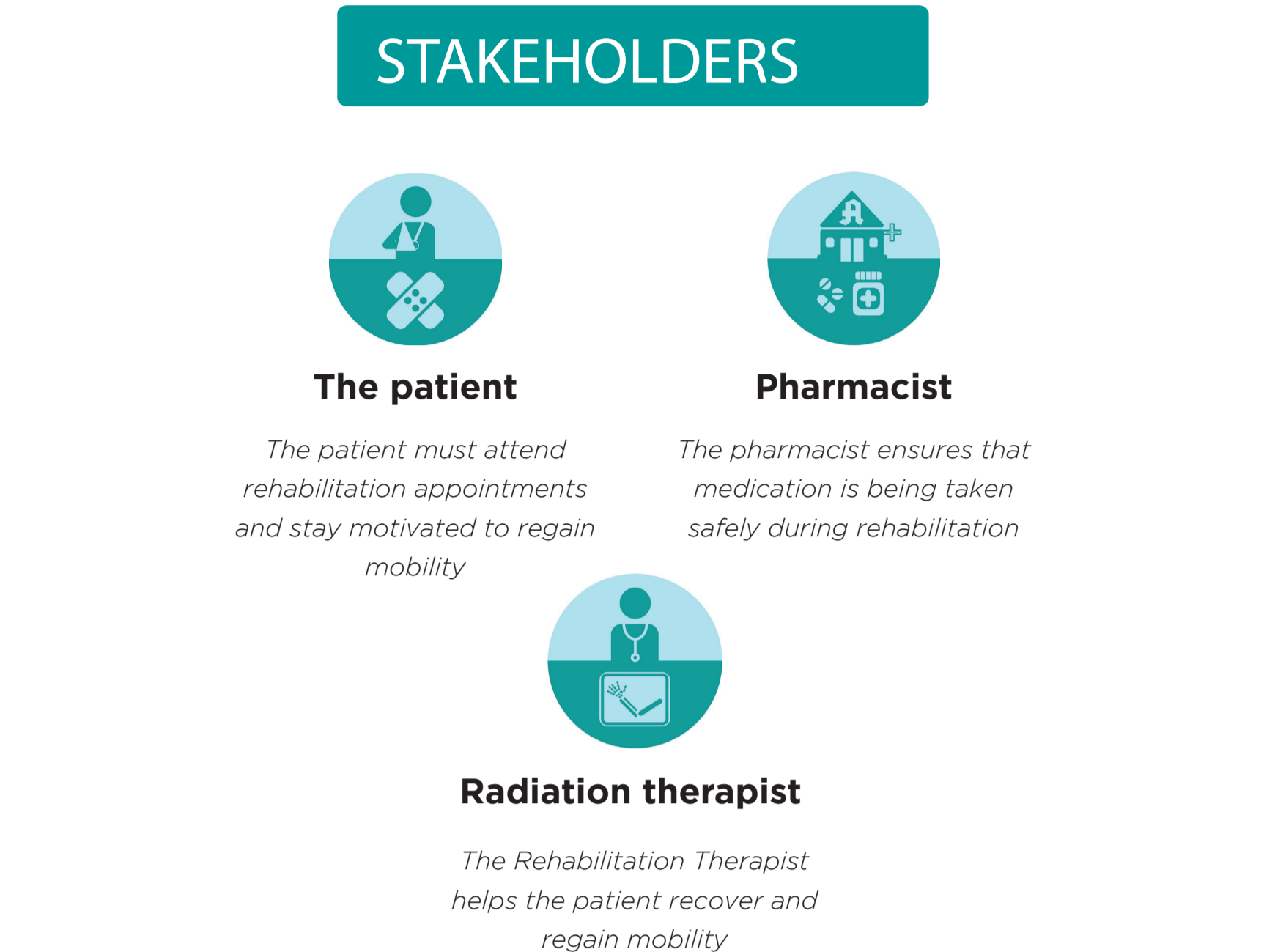
## 4 TREATMENT HOSPITAL



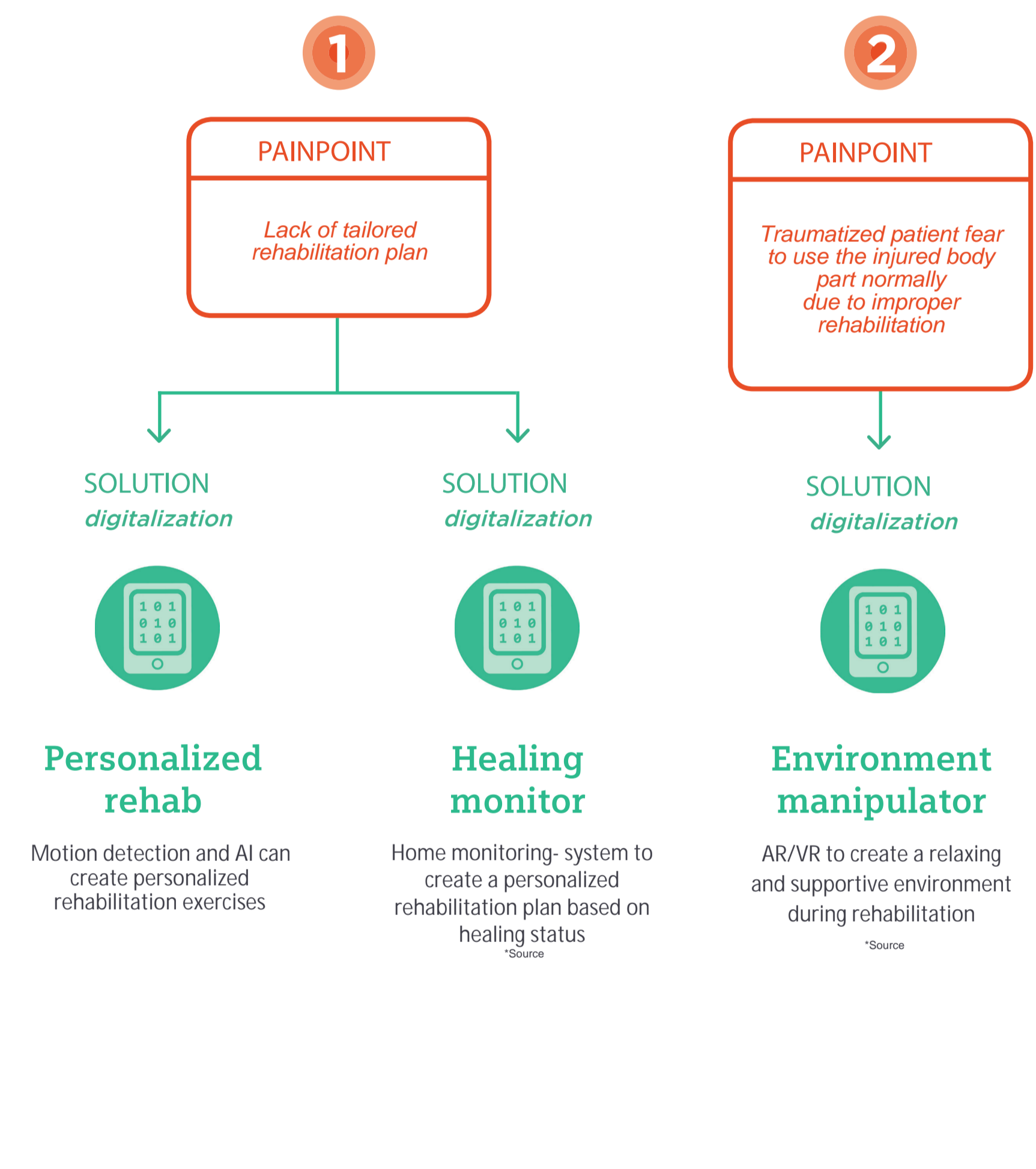
The patient is moved to hospital room for treatment



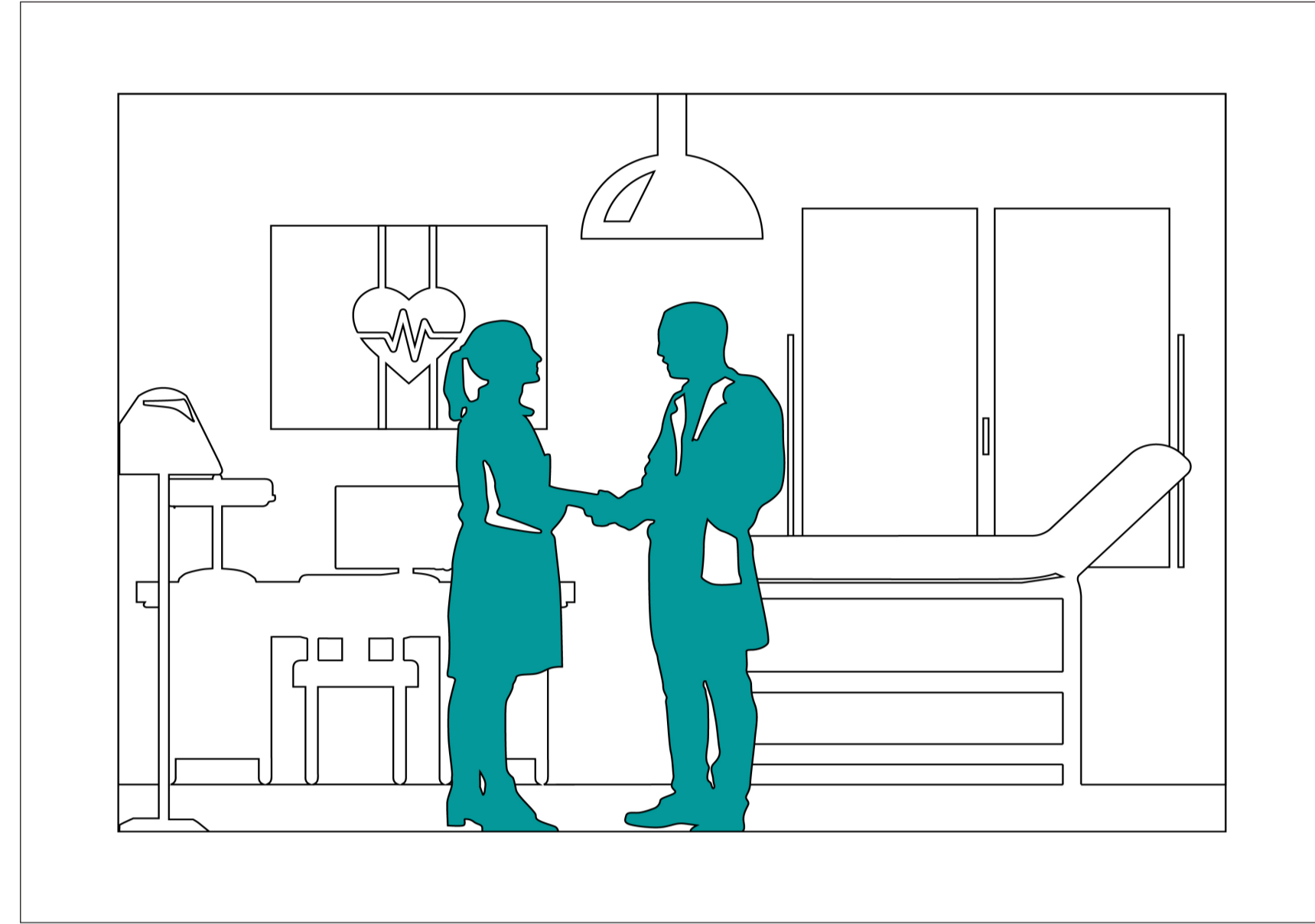
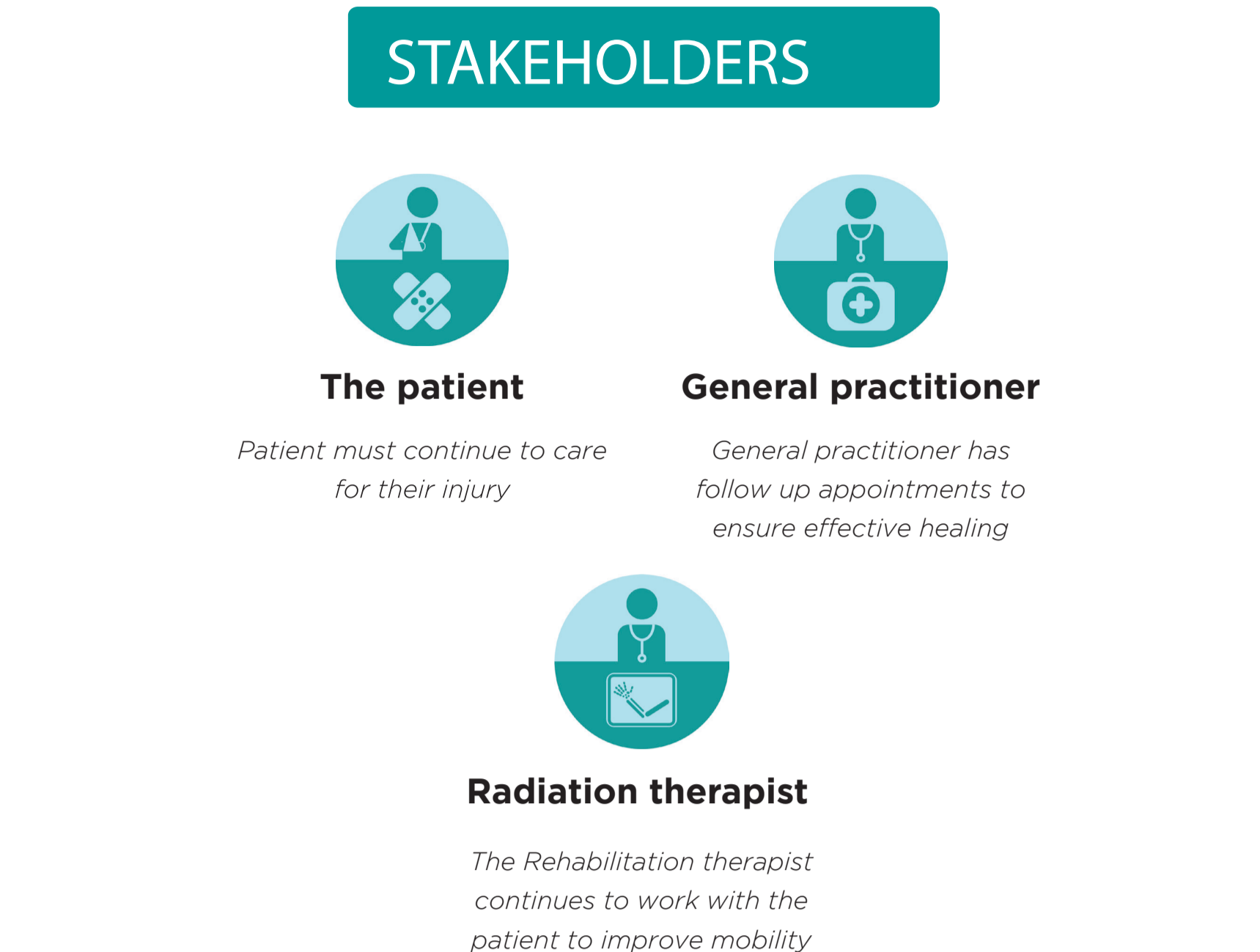
## 5 REHABILITATION HOSPITAL



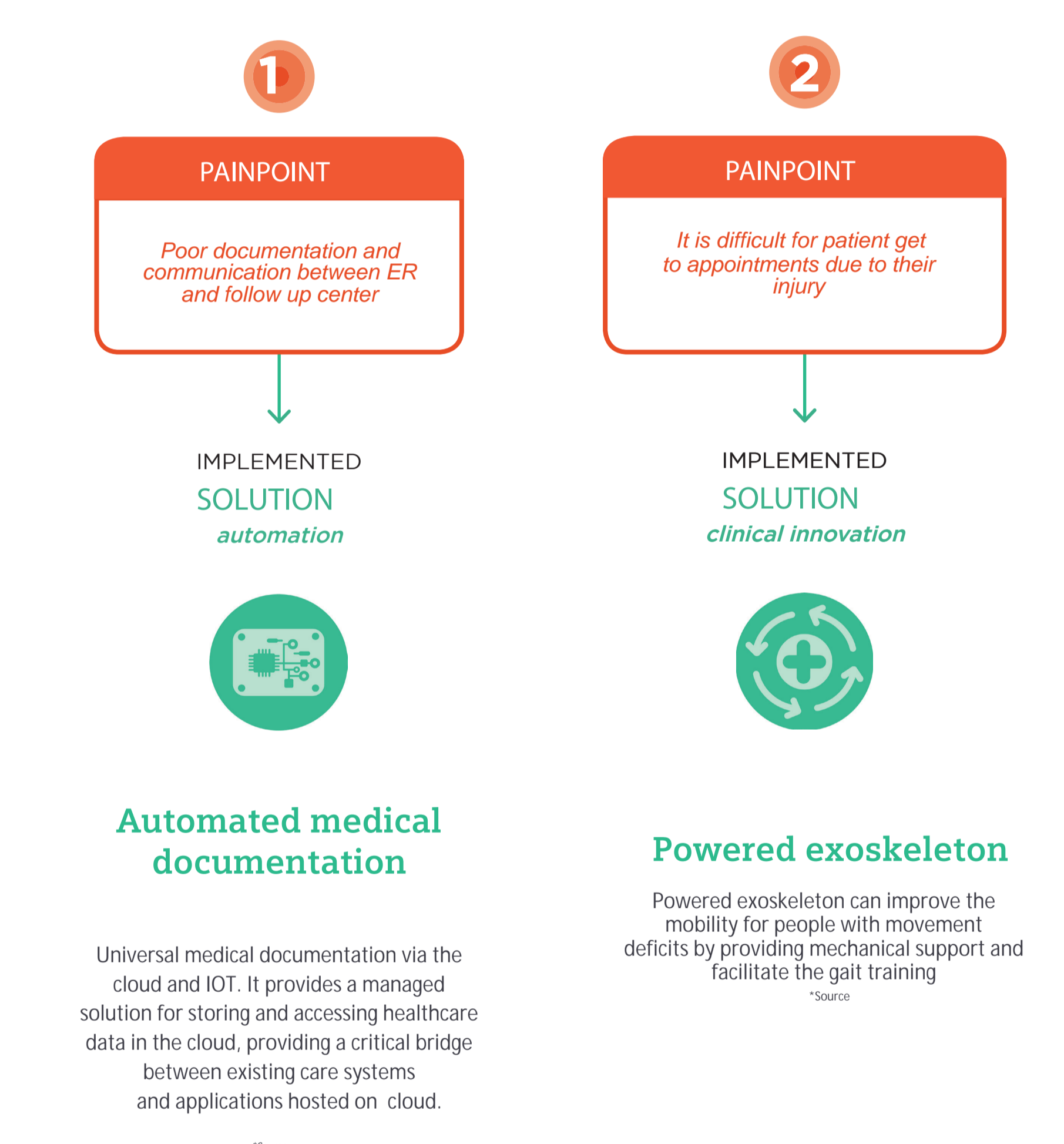
After treatment, patient undergoes rehabilitation to regain mobility



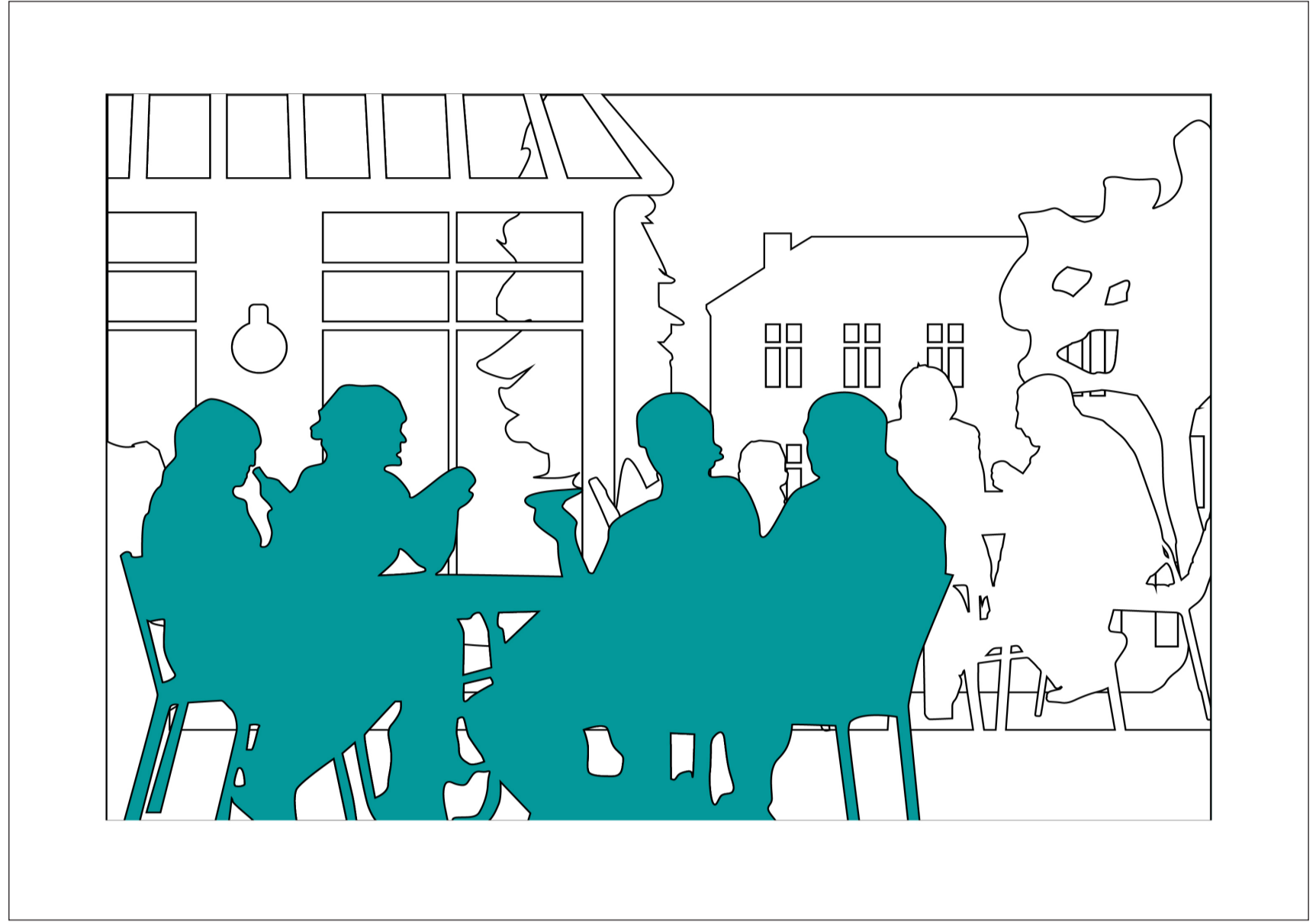
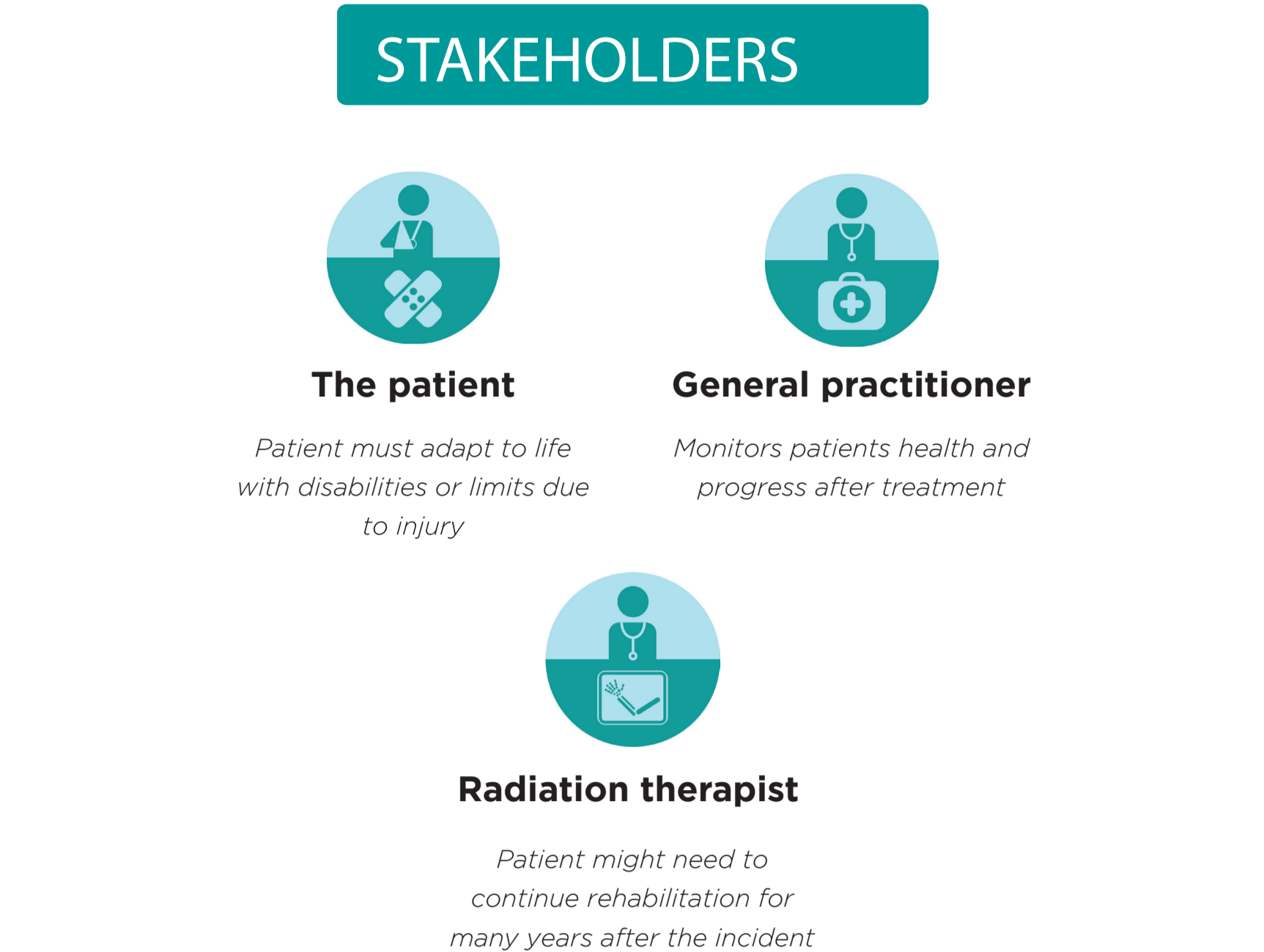
## 6 FOLLOW-UP HOSPITAL



Patient must go back to the doctors office for follow up appointments



## 7 Out-Patient HOME



The patient returns to normal life, but will probably need to make life changes due to the injury

