



HAVE CONFIDENCE

in an industry-leading scan—and know your doctor will quickly receive crisp, clear images.



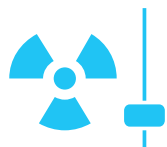
DESIGNED FOR COMFORT

throughout your scan with free-breathing technology, and a large, more patient-friendly space.



GET IN & OUT FAST

with quick and efficient scans.



MINIMIZE RADIATION EXPOSURE

with a scanner designed with the latest radiation dose technologies.

**Experience the CT
preferred by our doctors—
and our patients**

Your CT exam appointment information:

Date: _____

Time: _____



YOUR CT EXAM CHECKLIST:

- ☐ Remove all metal objects, such as a belt or jewelry.
- ☐ Bring images from previous examination (including X-rays) with you.
- ☐ Ask your physician if your examination requires contrast. If it does, find out how many hours you will need to fast before the examination.
- ☐ Let your physician know if you have had previous allergic reactions.

The best care requires the right images

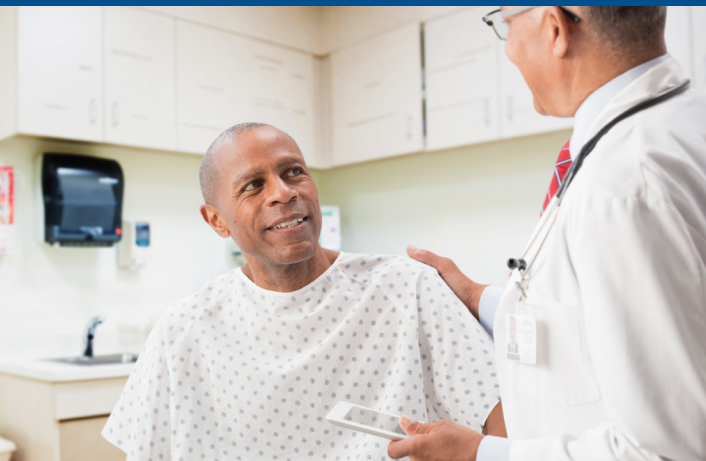


AN INDUSTRY-LEADING CT HAS ARRIVED AT

Are you having a CT scan?

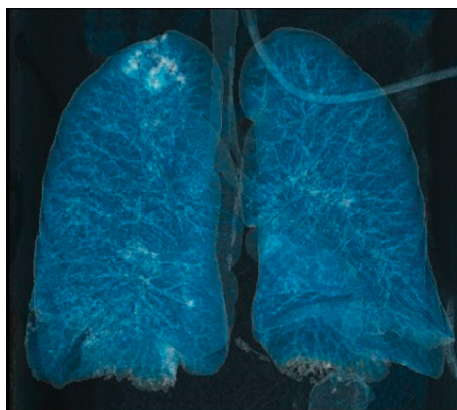
We understand that you want to get the best possible scan for the best possible care. And you may have a lot of questions. This brochure includes the answers to some of our most frequently asked questions.

A high-quality, computed tomography (CT) scan will help your doctors get the right information and make the best diagnosis. That's why we've invested in one of the most precise and low-dose CT scanners available, the SOMATOM Drive. This equipment provides your doctors with spectacular, hi-res images for a more confident diagnosis. And at the same time, it offers you a fast, comfortable, and high quality imaging experience.



WHAT IS A CT SCAN?

A CT or CAT scan, also known as a computed tomography scan, is a medical imaging method that uses special X-ray equipment to obtain cross-sectional pictures of the body. The CT computer displays these pictures as detailed images of organs, bones, and other tissues. This type of imaging can be very helpful in diagnosing injuries or fractures or in identifying disease in its earliest stages.



WHAT HAPPENS DURING MY EXAM?

You'll be asked to change into a gown and then you will lie down on a patient table. The CT system is shaped like a large doughnut called the gantry and the center of it is called the bore or tunnel. The patient table will move slowly through the gantry's bore. Once the table and you are in the correct position, your CT technologist may ask you to hold your breath or not to move. You'll hear the CT system, which makes a low whirring sound.



WHAT IS A CT SCAN WITH CONTRAST?

For some CT examinations, a contrast medium (sometimes called a dye) is given to help highlight a particular area of your body. Depending on the type of exam, contrast medium is administered in a number of different ways. You might, for example, be asked to drink it or it might be injected into a vein. Keep in mind the contrast medium contains iodine, which can cause an allergic reaction in some people.

ARE THERE RISKS ASSOCIATED WITH A CT SCAN?

CT scans use X-rays, invisible beams of ionizing radiation that pass through the body and are altered by different tissues to create images. At our facility, we are dedicated to achieving the highest levels of patient safety. For this reason, we use CT imaging technology that enables excellent quality images using low radiation doses. Our investment in low dose CT technology is part of our ongoing commitment to your health and well-being.

Please consult your physician regarding any existing allergies prior to the examination or any question regarding contrast medium.