

Control of orthosis therapy

Multitom Rax True2scale Body Scan¹ clinical case
Children's and Youth Hospital "Auf der Bult" Hannover



¹ Option

The products/features (mentioned herein) are not commercially available in all countries. Their future availability cannot be guaranteed. Results from case studies are not predictive of results in other cases. Results in other cases may vary.



Study ID 5aad365

Clinical background and indication for Multitom Rax True2scale Body Scan¹

Patient

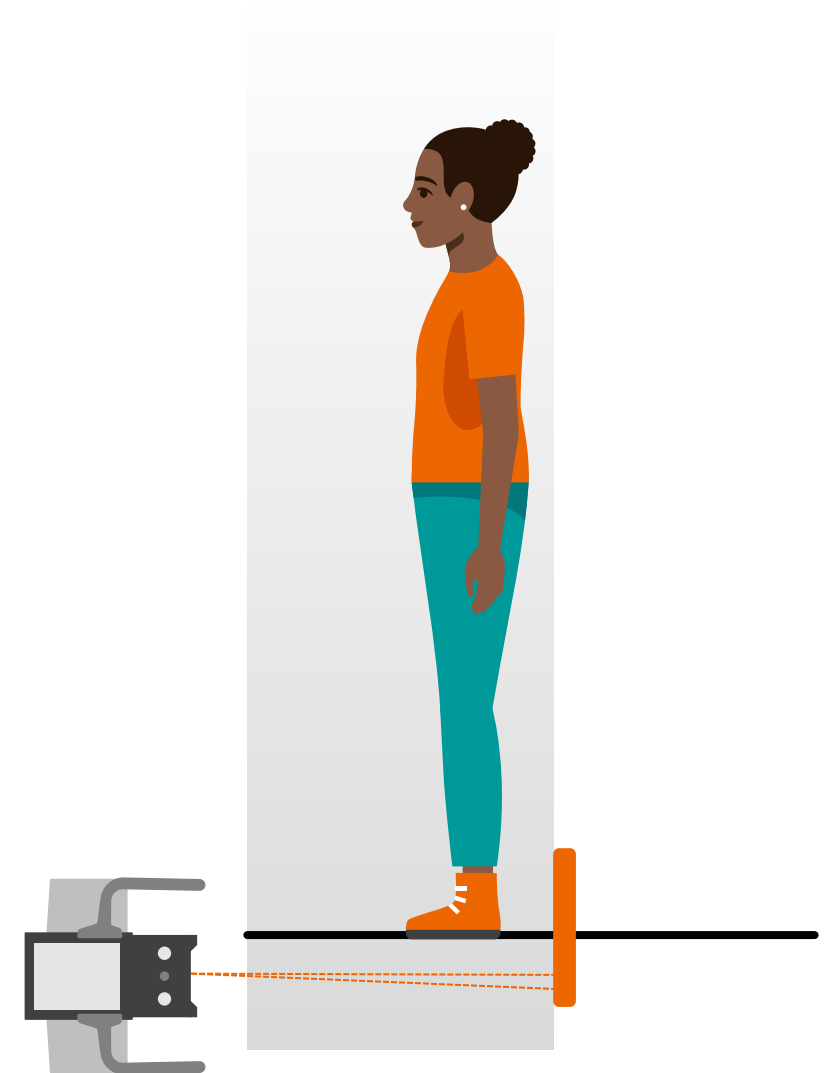
Female | Age range 10 - 15 years

Anamnesis

Bilateral spastic cerebral palsy after congenital CMV infection.
Treatment of scoliosis with orthosis.

Indication for True2scale Body Scan¹

Control of orthosis therapy.
Possible dose savings with foreseeable regular check-ups as part of scoliosis care.



¹ Option

The products/features (mentioned herein) are not commercially available in all countries. Their future availability cannot be guaranteed.

Multitom Rax True2scale Body Scan¹ Settings



**True2scale Body Scan in one plane using
upright S protocol in a sitting patient position**

Scan range 35 cm

Scan time 2 sec

Tube voltage 81 kV

Current time product 17.5 mAs

Dose area product 2.8 $\mu\text{Gy}\cdot\text{m}^2$

¹ Option

The products/features (mentioned herein) are not commercially available in all countries. Their future availability cannot be guaranteed

Multitom Rax True2scale Body Scan¹

Diagnostic findings

Right convex scoliosis.
Incidentally, the left hip was dislocated
despite the corrective osteotomy.

Further orthosis therapy.



True2scale Body Scan

¹ Option

The products/features (mentioned herein) are not commercially available in all countries. Their future availability cannot be guaranteed.



“True2scale Body Scan enables a sufficient assessment of the cover and base plates of the vertebral bodies with regard to Cobb angle measurement.”¹

Jürgen Weidemann, MD

Chief Physician Pediatric Radiology, Children's and Youth Hospital "Auf der Bult" Hannover

¹The statements by Siemens Healthineers customers described herein are based on results that were achieved in the customer's unique setting.

Since there is no “typical” hospital and many variables exist (e.g., hospital size, case mix, level of IT adoption) there can be no guarantee that other customers will achieve the same results.



The products/features (mentioned herein) are not commercially available in all countries. Their future availability cannot be guaranteed. True2scale Body Scan is an option.

Results from case studies are not predictive of results in other cases. Results in other cases may vary.

Dr. Jürgen Weidemann is employed by an institution that receives financial support from Siemens Healthineers for collaborations.