

Osteoarthritis of the knee

Multitom Rax True2scale Body Scan¹ clinical case
Krankenhaus der Augustinerinnen, Cologne, Germany



¹ Option, True2scale Body Scan is pending 510(k) clearance and is not yet commercially available in the US.
The products/features (mentioned herein) are not commercially available in all countries. Their future availability cannot be guaranteed.
Results from case studies are not predictive of results in other cases. Results in other cases may vary.



Study ID 5aad077

Clinical background and indication for Multitom Rax True2scale Body Scan¹

Patient

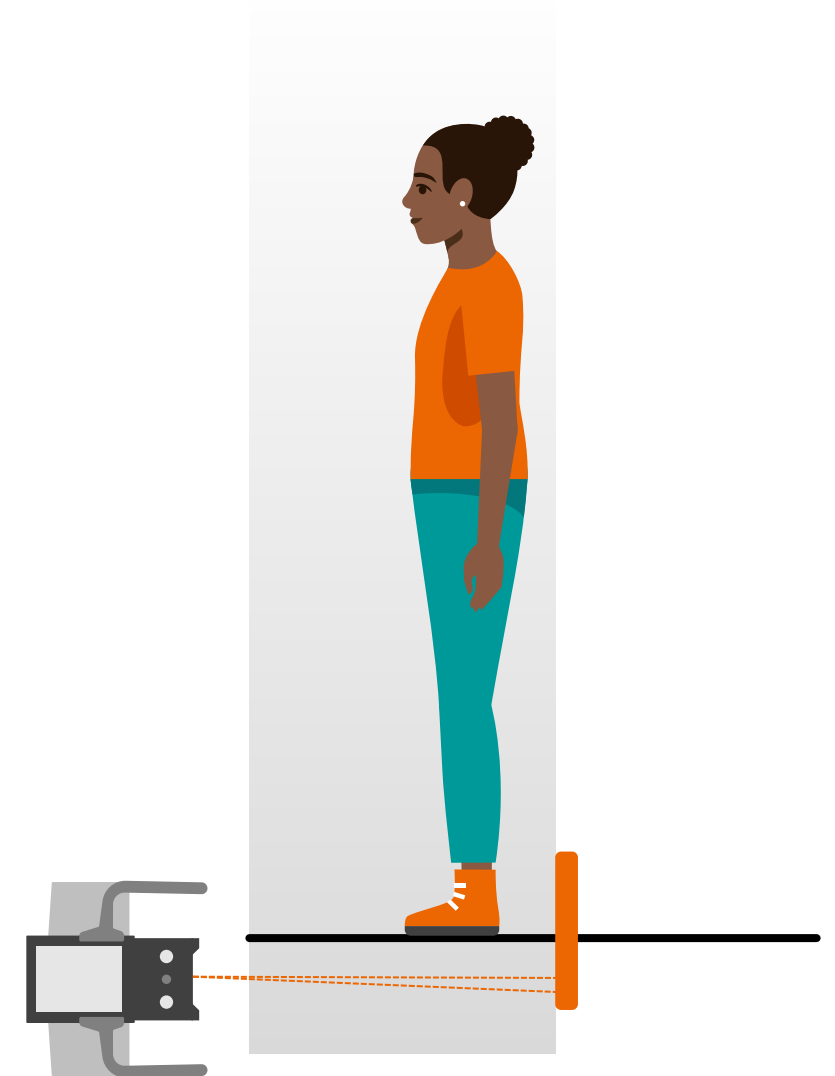
Female | Age range 70 - 80 years | BMI range 25 - 30 kg/m²

Anamnesis

The patient suffered osteoarthritis. A hip replacement had already been performed. She reported knee pain under weight-bearing conditions with gonarthrosis.

Indication for True2scale Body Scan¹

A long leg examination was required for preoperative planning.



¹ Option, True2scale Body Scan is pending 510(k) clearance and is not yet commercially available in the US.

The products/features (mentioned herein) are not commercially available in all countries. Their future availability cannot be guaranteed.

Multitom Rax True2scale Body Scan¹ Settings



True2scale Body Scan in one plane using **upright M** protocol

<i>Scan range</i>	93 cm
<i>Scan time</i>	4 sec
<i>Tube voltage</i>	81 kV
<i>Current time product</i>	161 mAs
<i>Dose area product</i>	24.6 $\mu\text{Gy}\cdot\text{m}^2$

¹ Option, True2scale Body Scan is pending 510(k) clearance and is not yet commercially available in the US.

The products/features (mentioned herein) are not commercially available in all countries. Their future availability cannot be guaranteed

Multitom Rax True2scale Body Scan¹

Diagnostic findings

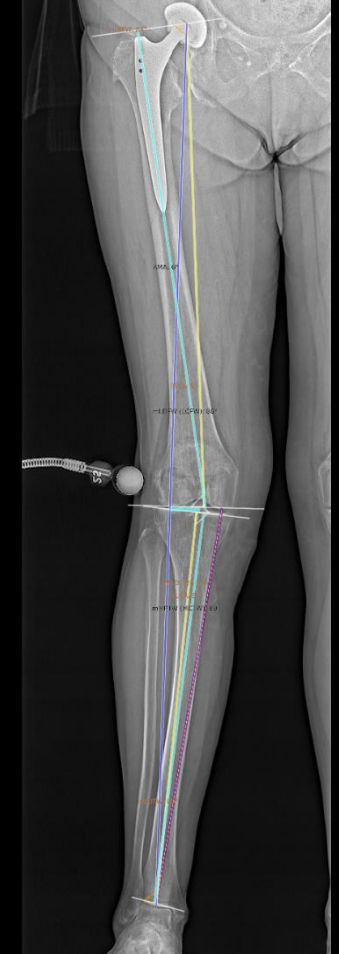
Measurement of mechanical and anatomical leg axes for preoperative 2-dimensional planning of a total knee replacement.

*Zoom into the True2scale
Body Scan of the leg*



Study ID 5aad077

*Measurements on the
True2scale examination
using mediCAD®
planning software*



¹ Option, True2scale Body Scan is pending 510(k) clearance and is not yet commercially available in the US.

The products/features (mentioned herein) are not commercially available in all countries. Their future availability cannot be guaranteed.



“All important anatomical structures are assessable on True2scale Body Scan with good image contrast, good spatial resolution and minor image noise.”¹

Frank Schellhammer, MD

Krankenhaus der Augustinerinnen, Cologne, Germany

¹The statements by Siemens Healthineers customers described herein are based on results that were achieved in the customer's unique setting.

Since there is no “typical” hospital and many variables exist (e.g., hospital size, case mix, level of IT adoption) there can be no guarantee that other customers will achieve the same results.



The products/features (mentioned herein) are not commercially available in all countries. Their future availability cannot be guaranteed. True2scale Body Scan (option) is pending 510(k) clearance and is not yet commercially available in the US.

Results from case studies are not predictive of results in other cases. Results in other cases may vary.

Dr. Frank Schellhammer is employed by an institution that receives financial support from Siemens Healthineers for collaborations.