

Adolescent idiopathic scoliosis

Multitom Rax True2scale Body Scan¹ clinical case
Institute and Polyclinic for Diagnostic and Interventional
Radiology, University Hospital Carl Gustav Carus,
Technical University Dresden, Germany



¹Option, True2scale Body Scan is pending 510(k) clearance and is not yet commercially available in the US. The products/features (mentioned herein) are not commercially available in all countries. Their future availability cannot be guaranteed.



Clinical background and indication for Multitom Rax True2scale Body Scan¹

Patient

Female | *2002 | Height 173 cm

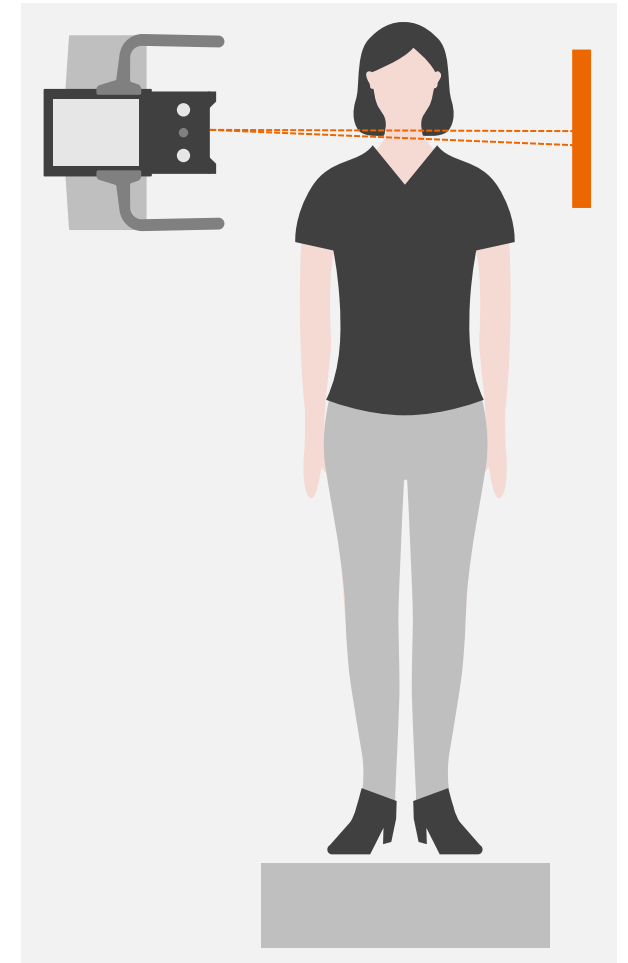
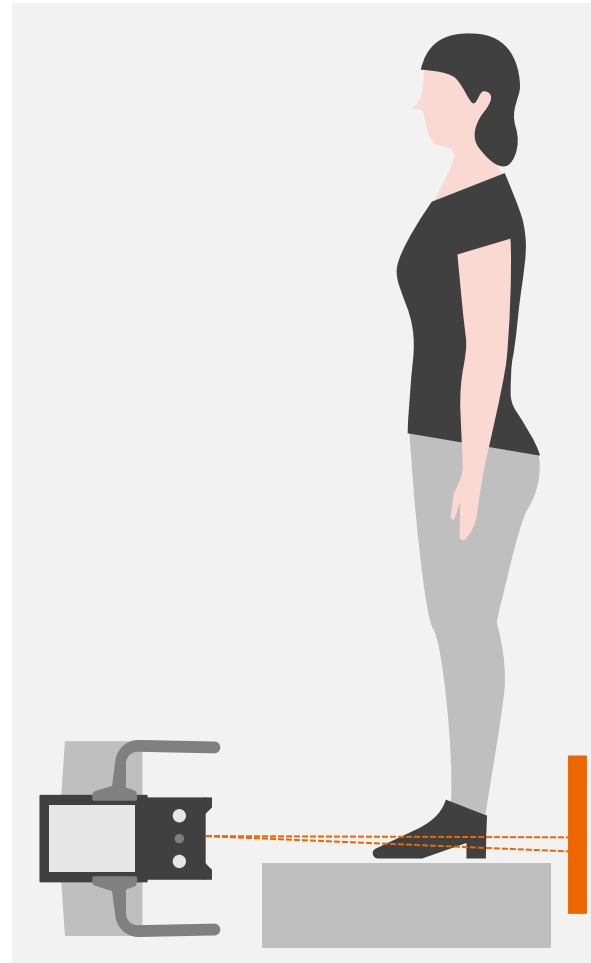
Anamnesis

Patient with adolescent idiopathic scoliosis (AIS) under therapy with orthosis.

Indication for True2scale Body Scan¹

Control without orthosis.

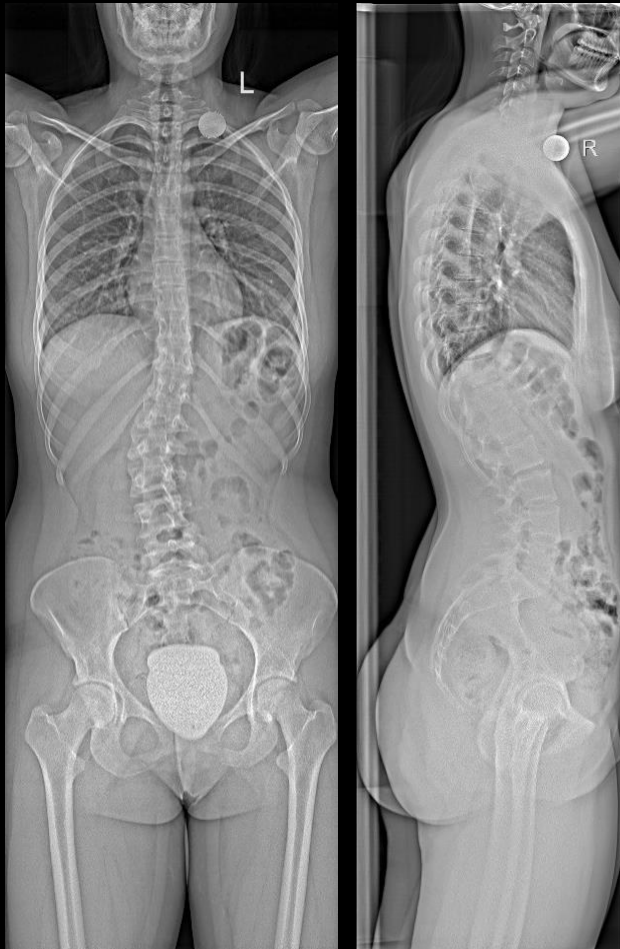
True2scale is established as the standard imaging at the radiology department of the university hospital Carl Gustav Carus Dresden.



¹ Option, True2scale Body Scan is pending 510(k) clearance and is not yet commercially available in the US.

The products/features (mentioned herein) are not commercially available in all countries. Their future availability cannot be guaranteed.

Multitom True2scale Body Scan¹ Settings



Study ID 5aac394

True2scale Body Scan in two planes using upright M protocol

Scan range 61 cm

Scan time 18 sec

Anterior posterior examination

Tube voltage 81 kV

Current time product 156 mAs

Dose area product 29 $\mu\text{Gy}\cdot\text{m}^2$

Lateral examination

Tube voltage 117 kV

Current time product 236 mAs

Dose area product 91 $\mu\text{Gy}\cdot\text{m}^2$

¹ Option, True2scale Body Scan is pending 510(k) clearance and is not yet commercially available in the US.

The products/features (mentioned herein) are not commercially available in all countries. Their future availability cannot be guaranteed

Multitom Rax True2scale Body Scan¹

Diagnostic findings

Measuring cobb angles of 26° under orthosis therapy.

Slight left-convex scoliosis of thoracolumbar junction and right-convex scoliosis of lumbar spine visible.

Further conservative treatment of scoliosis with orthosis necessary.



Study ID 5aac394

¹ Option, True2scale Body Scan is pending 510(k) clearance and is not yet commercially available in the US.
The products/features (mentioned herein) are not commercially available in all countries. Their future availability cannot be guaranteed.



“True2scale Body Scan offers images with good diagnostic quality. The spatial resolution and the image contrast are very good. All bony contours are clearly visible.”¹

Sophia Blum, MD
University Carl Gustav Carus Dresden, Germany

¹The statements by Siemens Healthineers customers described herein are based on results that were achieved in the customer's unique setting.

Since there is no “typical” hospital and many variables exist (e.g., hospital size, case mix, level of IT adoption) there can be no guarantee that other customers will achieve the same results.



The products/features (mentioned herein) are not commercially available in all countries. Their future availability cannot be guaranteed. True2scale Body Scan (option) is pending 510(k) clearance and is not yet commercially available in the US.

Results from case studies are not predictive of results in other cases. Results in other cases may vary.

Dr. Sophia Blum is employed by an institution that receives financial support from Siemens Healthineers for collaborations.