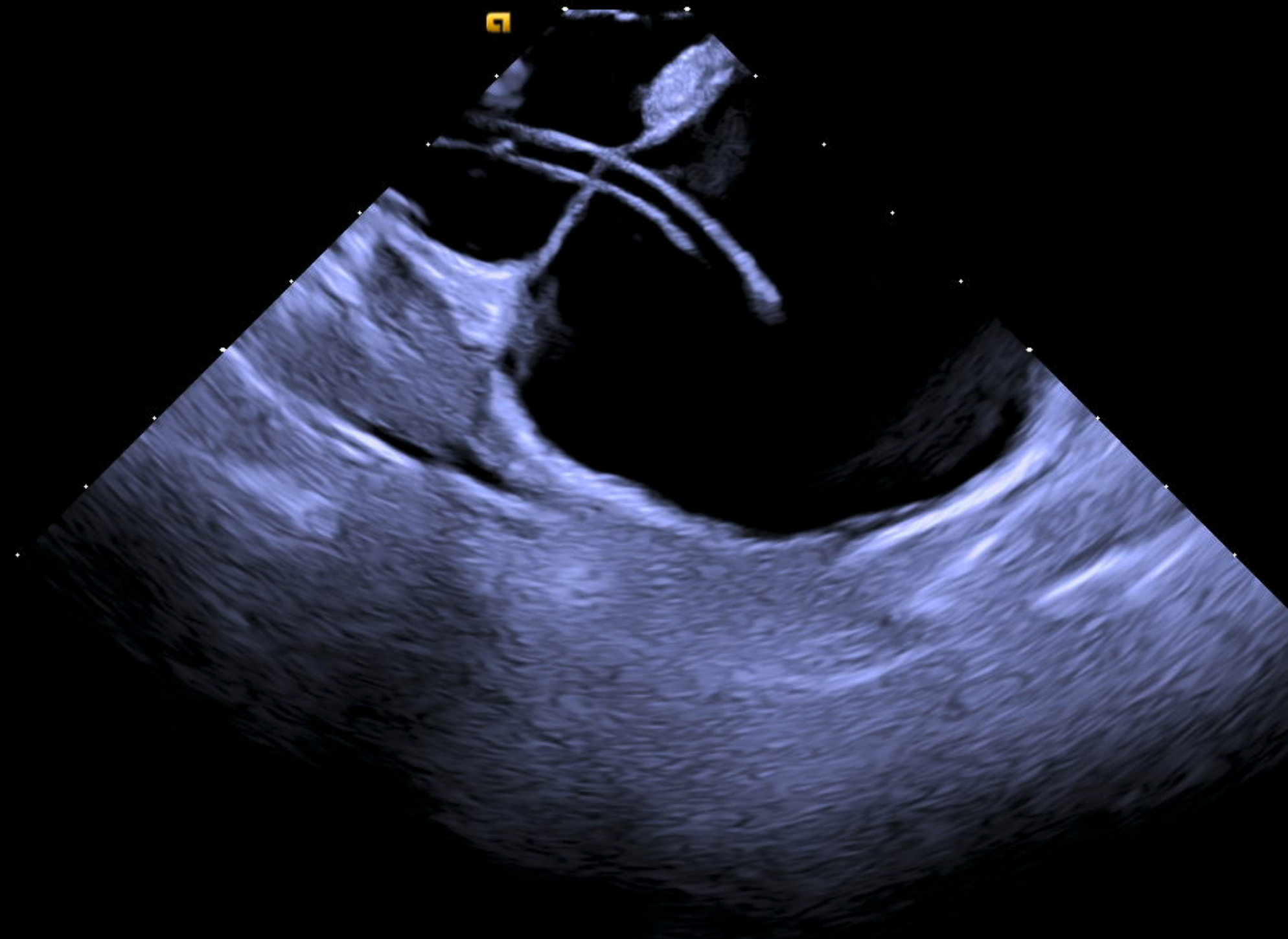
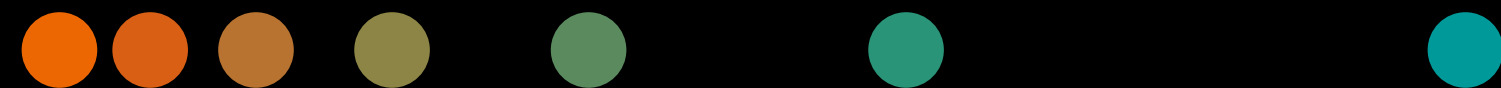


ACUSON SC2000 PRIME ultrasound system

# The complete electrophysiology solution for your patient pathway

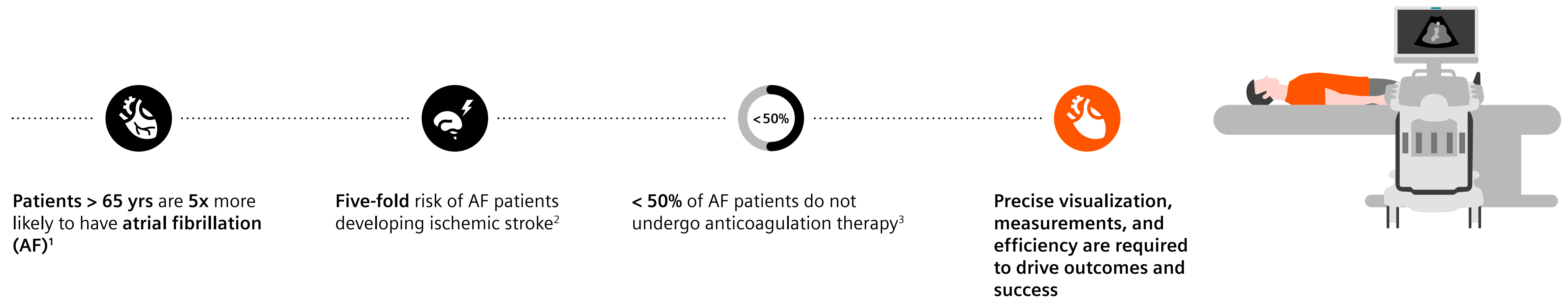
Release 6.5

[siemens-healthineers.com/acuson-sc2000-ultrasound-system](https://siemens-healthineers.com/acuson-sc2000-ultrasound-system)



**SIEMENS**  
Healthineers

# What if you could increase both speed and precision for your electrophysiology procedures?





# Introducing the complete solution for the electrophysiology lab

The ACUSON SC2000 PRIME ultrasound system

Built with revolutionary power, the ACUSON SC2000 PRIME system offers the complete solution for your electrophysiology needs as the only system to offer 2D and 4D TTE, TEE, ICE and TrueFusion with the broadest portfolio of ICE catheters on the market today.<sup>1</sup>



**Power of the platform**  
 Pioneering 2D/4D imaging technologies for more clinically relevant detail in every image.

**The complete solution for your EP patient pathway**  
 The only system to offer 2D and 4D TTE, TEE, ICE and TrueFusion.<sup>2</sup>

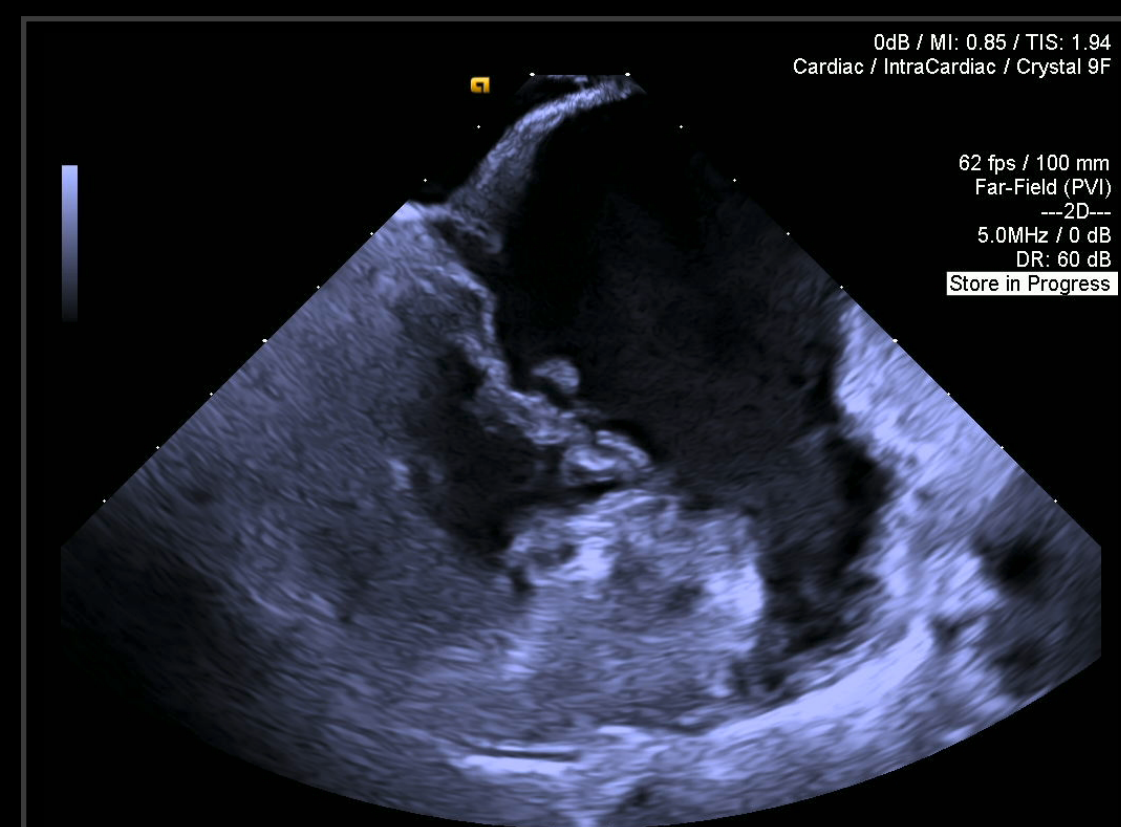
**AI-powered apps for precision & speed**  
 The most comprehensive suite of AI-powered applications.

**More relevant than ever before**  
 Improvements in image quality, IT and security, processing power, and ergonomics.

# Broadest offering of ICE catheters on the market: 2D, 3D, and 4D ICE catheters

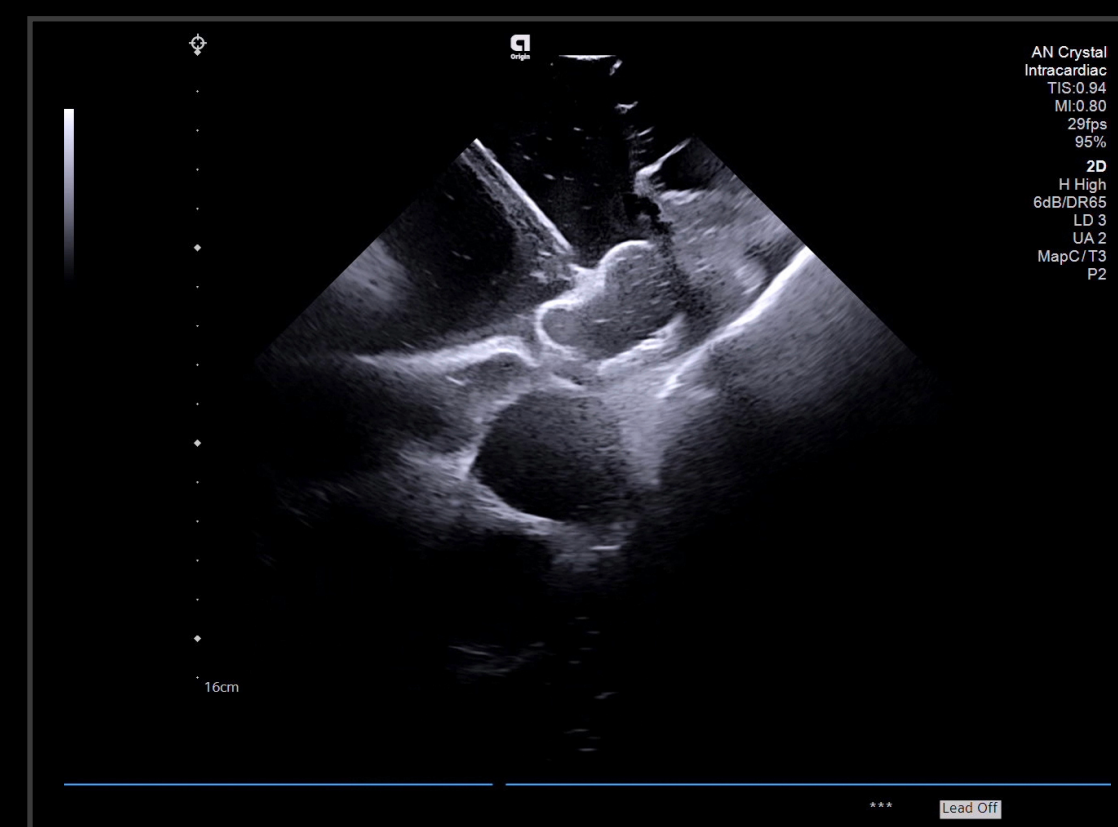
For more confidence and efficiency for all your ICE guided procedures

## AcuNav 8F and 10F ICE catheters



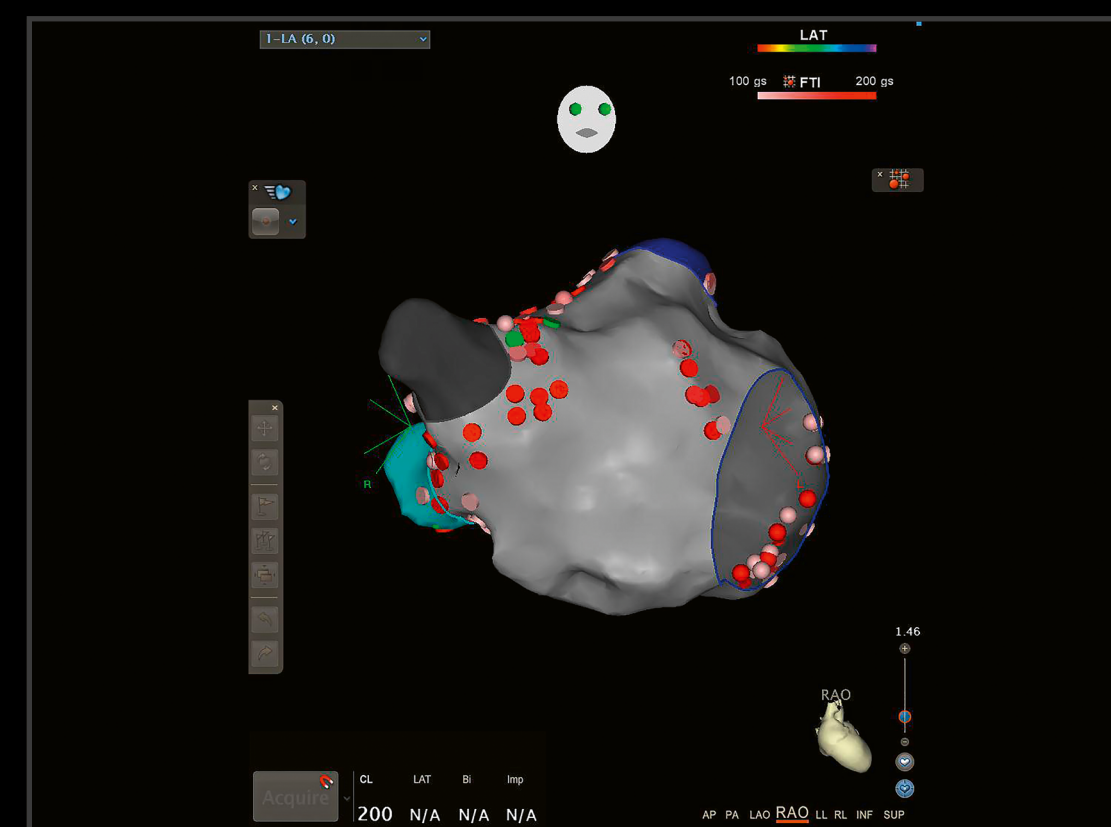
2D ICE view of the left atrial appendage and mitral valve

## AcuNav Crystal 2D ICE catheter



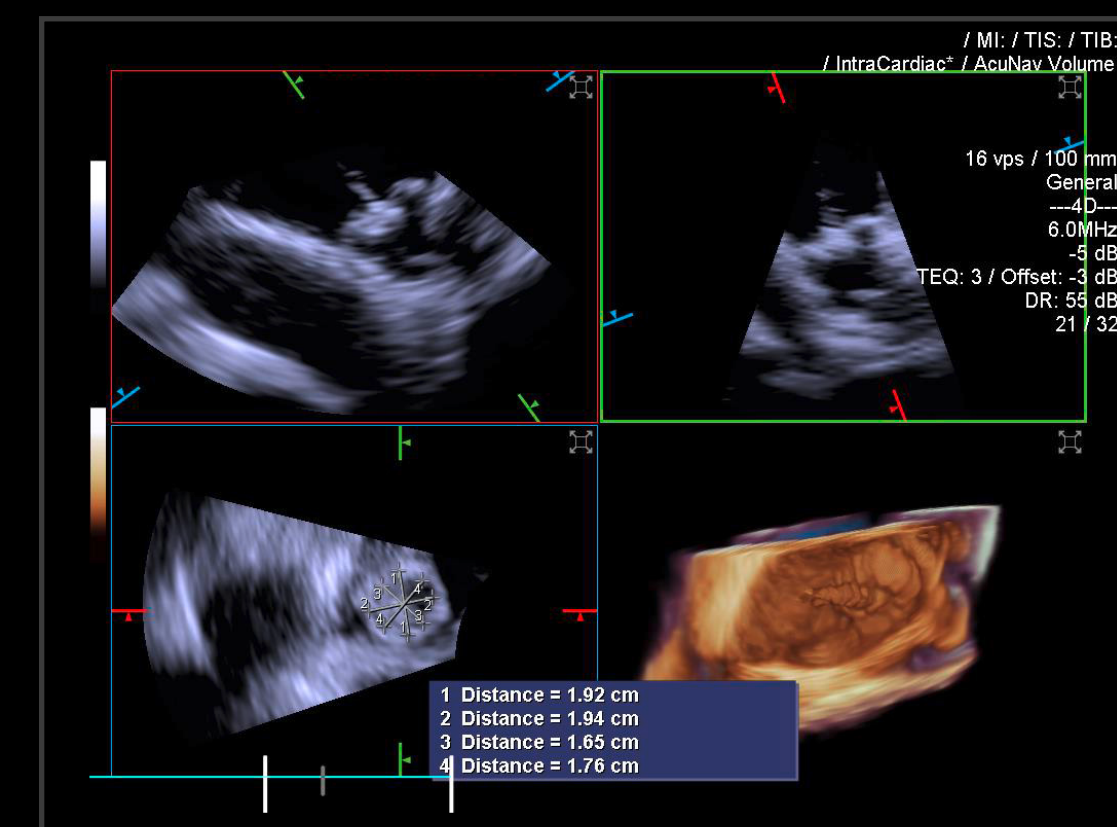
AcuNav Crystal imaging of left atrial occluder device deployment

## SOUNDSTAR 9F, eco 8F, and 10F



CartoSound® Module technology with the SOUNDSTAR® catheter

## AcuNav Volume ICE catheter



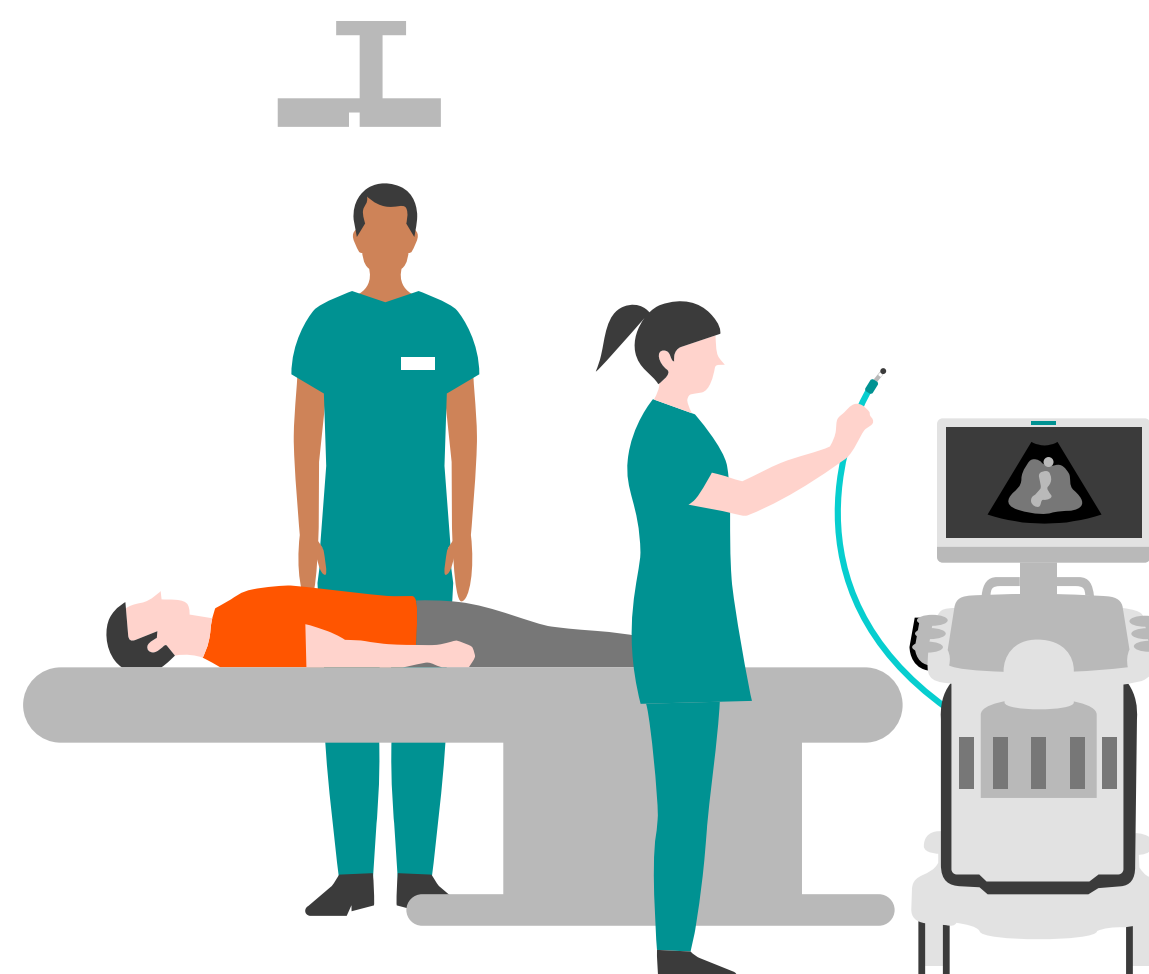
4D ICE view of left atrial appendage closure device



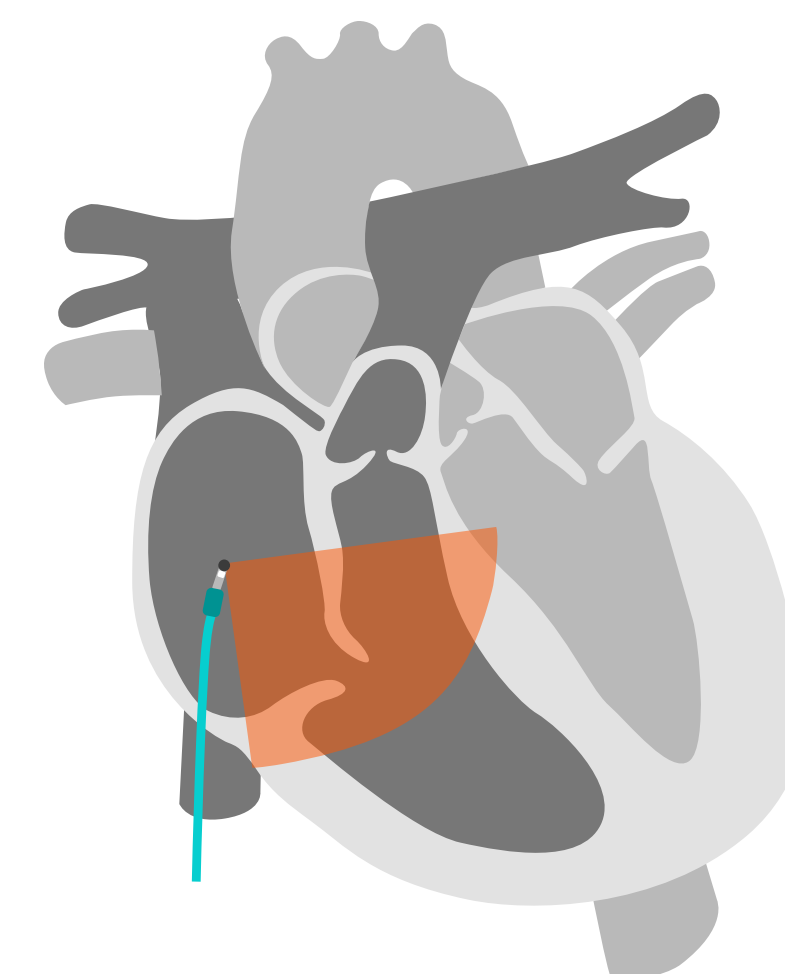
# Increase confidence and speed in your EP procedures

## ICE Probe Saver

Precise imaging and speed are of the utmost importance when your patient is on the table for electrophysiology procedures. The new ICE Probe Saver automatically ensures the integrity of your ICE catheter throughout the procedure – no manual intervention required. Increase confidence and speed in your EP procedures with the ICE Probe Saver on the ACUSON SC2000 PRIME.

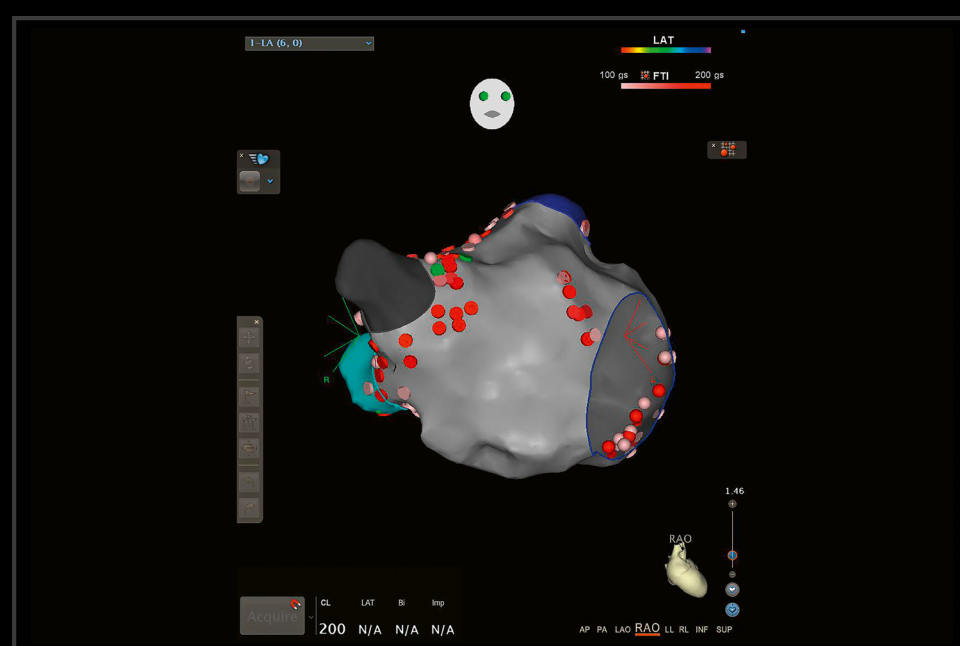


Unlike conventional systems on the market, the ACUSON SC2000 PRIME is constantly scanning for changes in the brightness of the ICE image and will automatically lower the transmit power when it detects imaging in air.

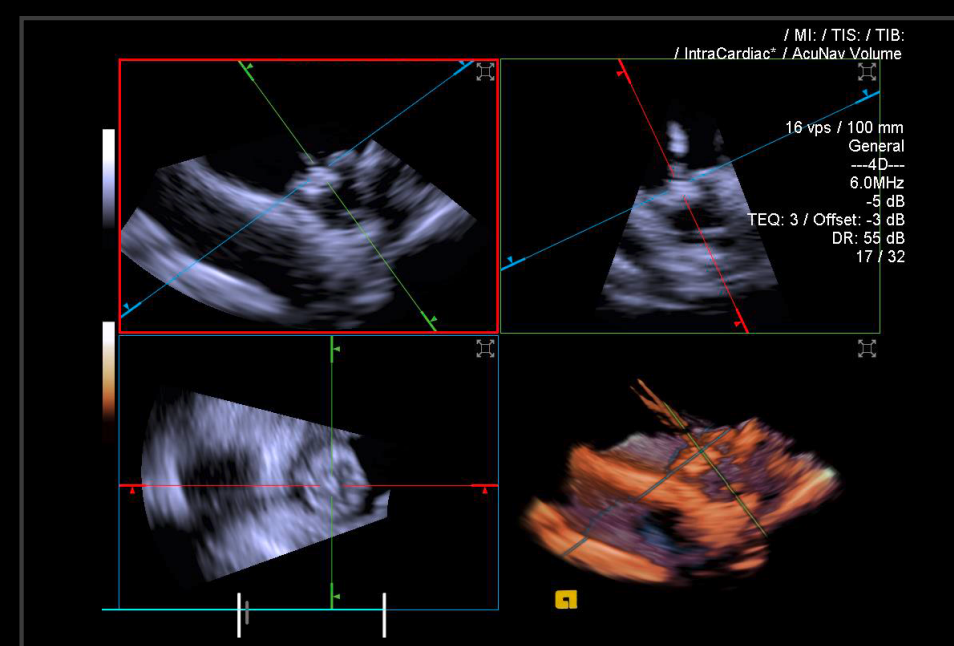


The transmit power will automatically be restored to its original level upon any change in brightness or if the user interacts with the ACUSON SC2000 PRIME.

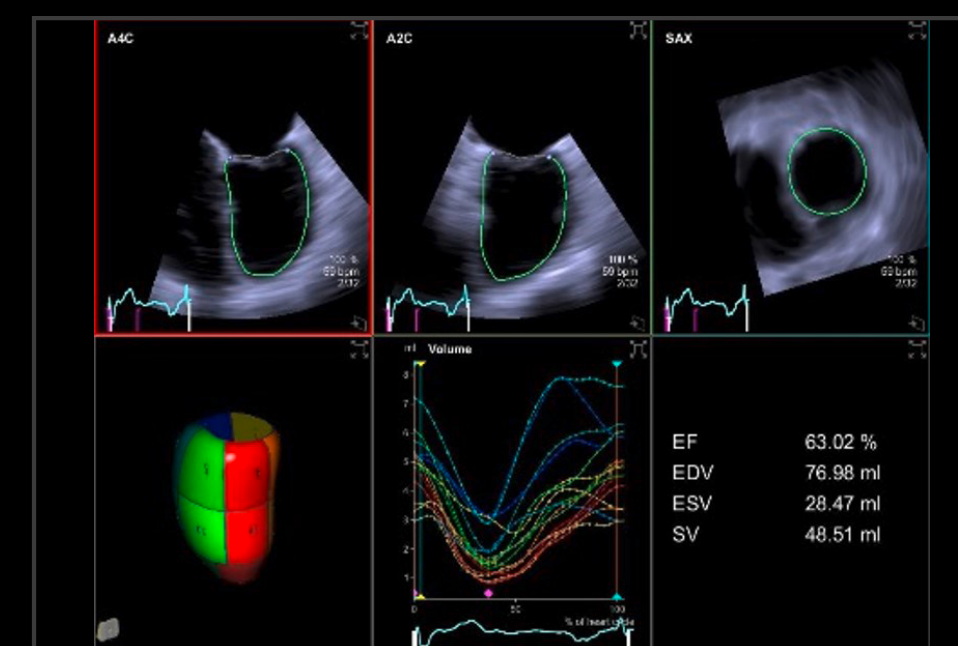
## AF ablation with AcuNav and SOUNDSTAR ICE catheters



# LAAC with 4D Volume ICE



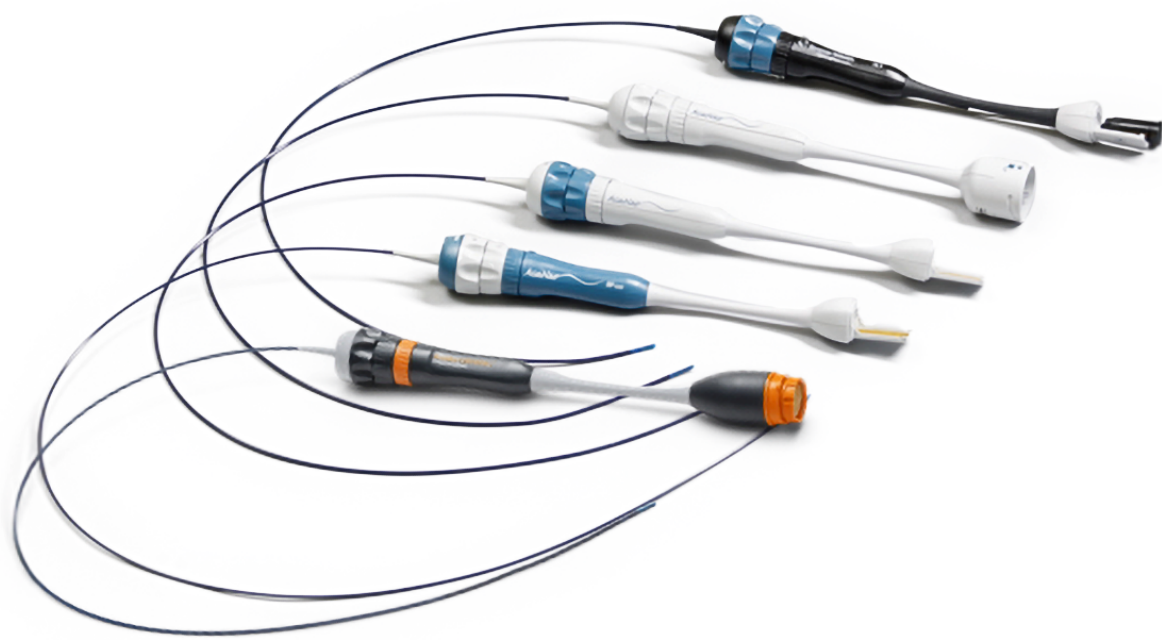
## Diagnosis and follow-up with eSie Left Heart and eSie LVA





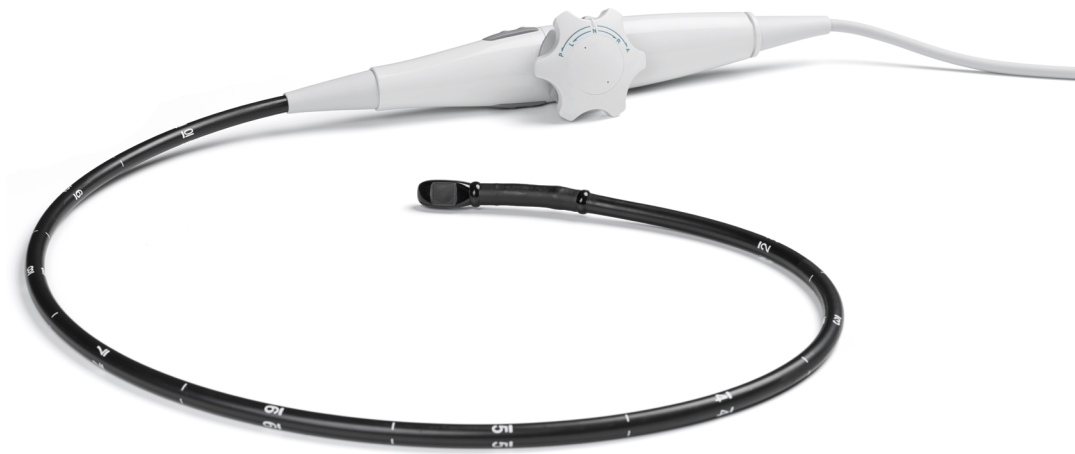
# The only system to do 2D and 4D TTE, TEE, ICE, and TrueFusion<sup>1</sup>

## ACUSON AcuNav ultrasound catheters



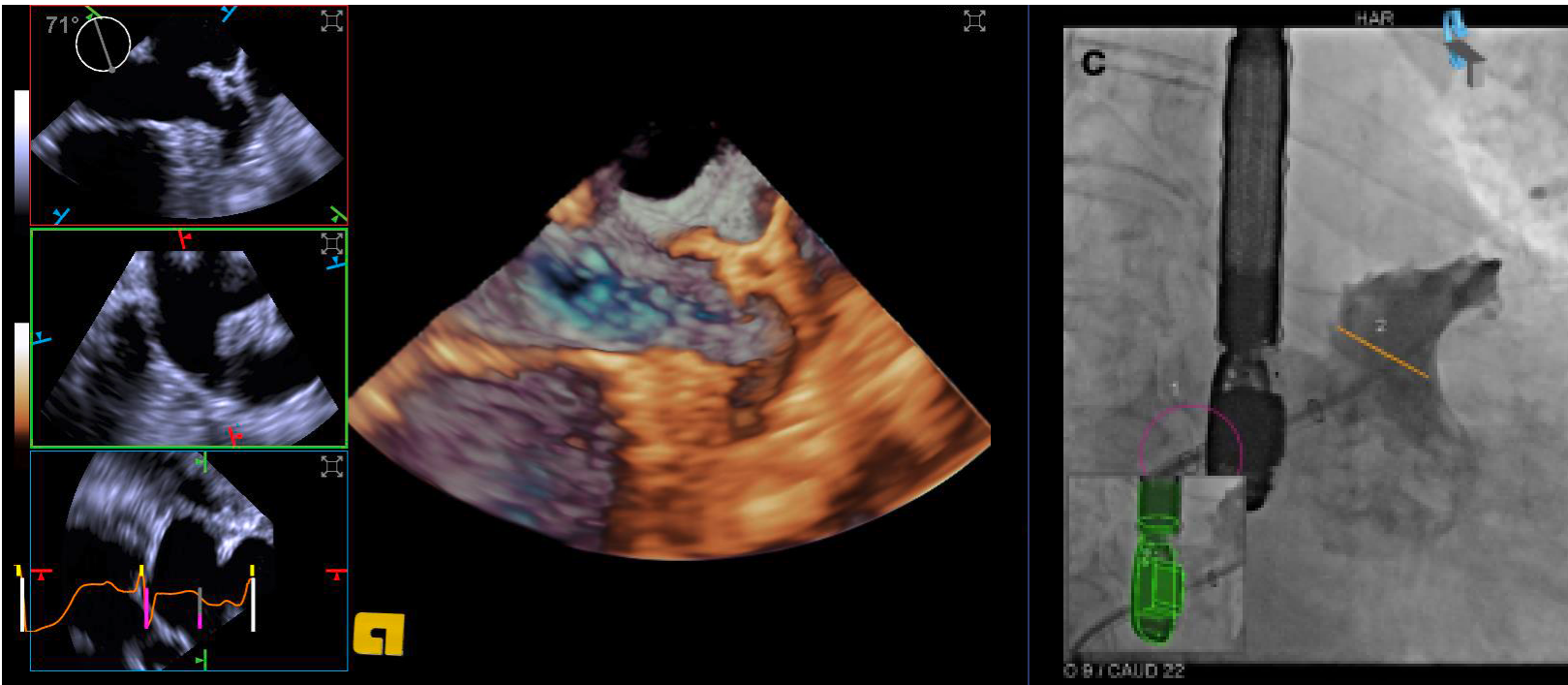
Offers 2D, 3D and volume ICE imaging with the broadest portfolio of ICE catheters on the market today.<sup>2</sup>

## Z6Ms True Volume TEE



Volume and volume color Doppler as easy and real time as your 2D imaging even for patients with arrhythmia.

## TrueFusion<sup>1</sup>

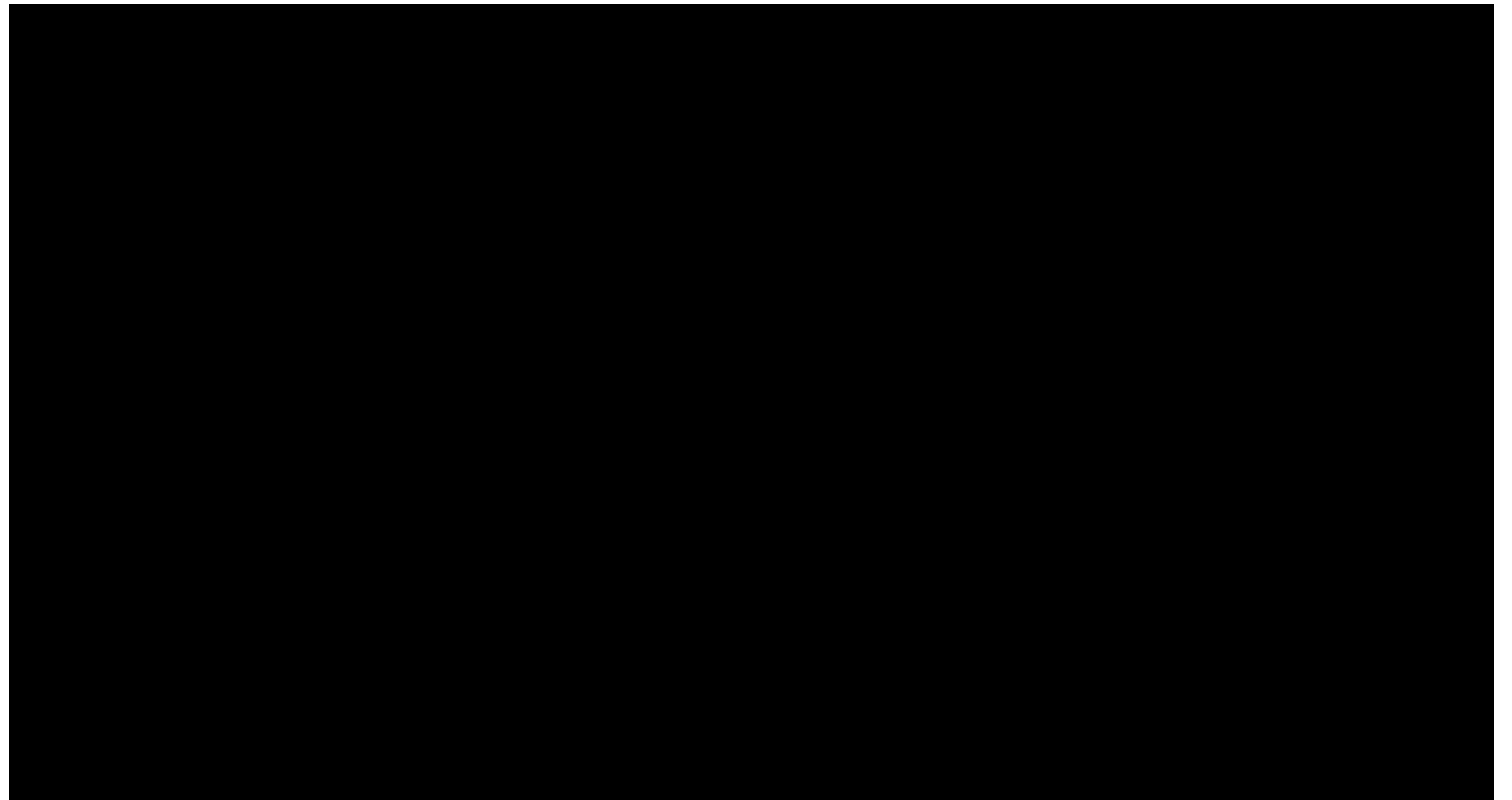


Increase precision and communication to support procedures with less contrast, dose, and time.

# One of the leading in artificial intelligence and imaging

Providing speed and precision in echocardiography

For treatment support and care of heart failure and sudden cardiac death patients, AI-powered eSie Left Heart and eSie LVA provide serial ejection fraction measurements with less unwarranted measurement variability, less effort in less time versus manual measurements.

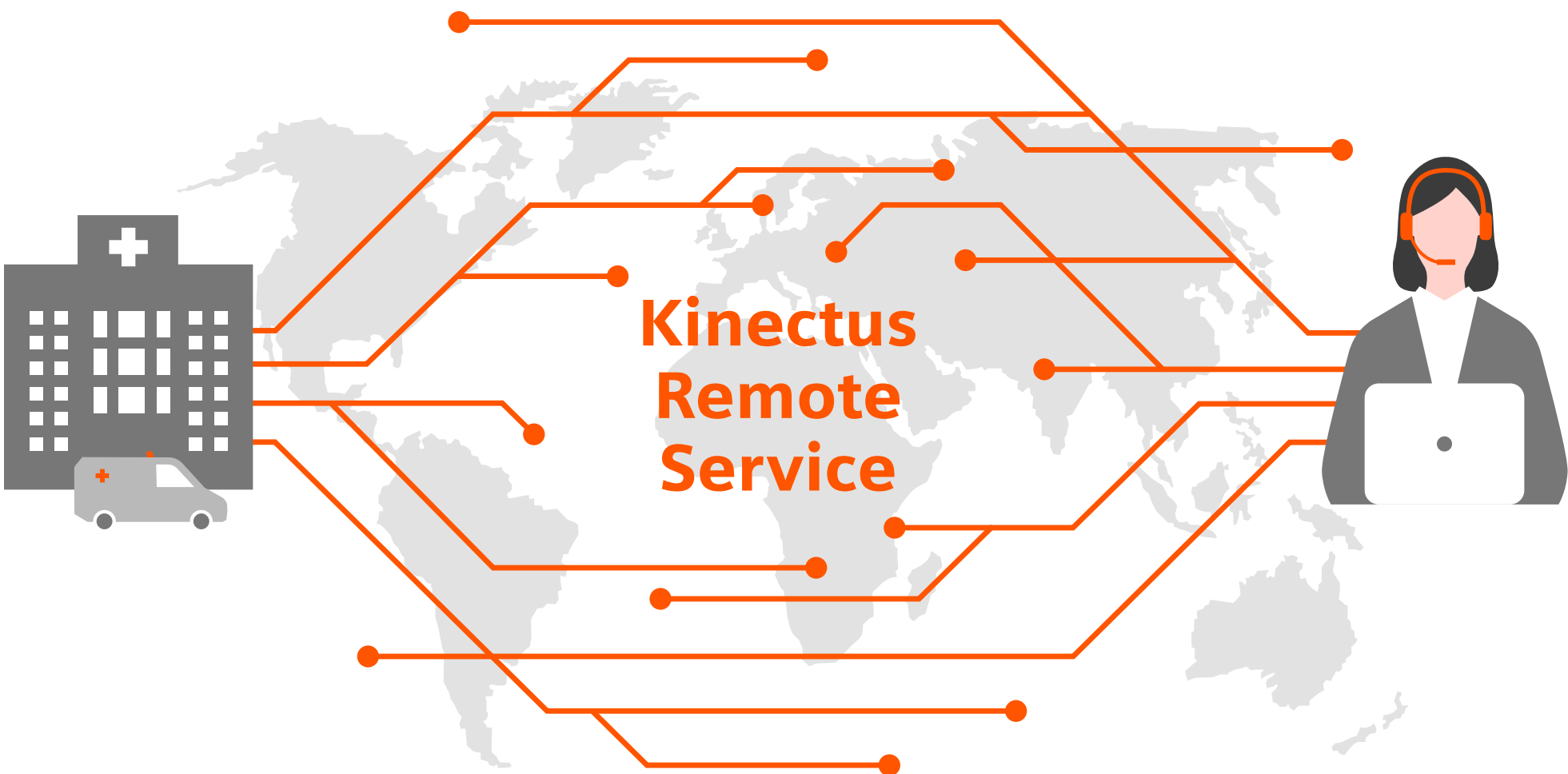




# Maximize system uptime with remote connected support

More relevant than ever before in the digital world

Kinectus Remote Service connects your medical equipment to our experts who provide you with proactive and interactive services caring for your running operations.



### Remote diagnosis and repair

Immediate access to technical support  
reducing labor costs by **> 50%<sup>1</sup>**

### Remote assist

Real-time interaction with clinical application experts resulting in **faster incident resolution by > 80%<sup>1</sup>**

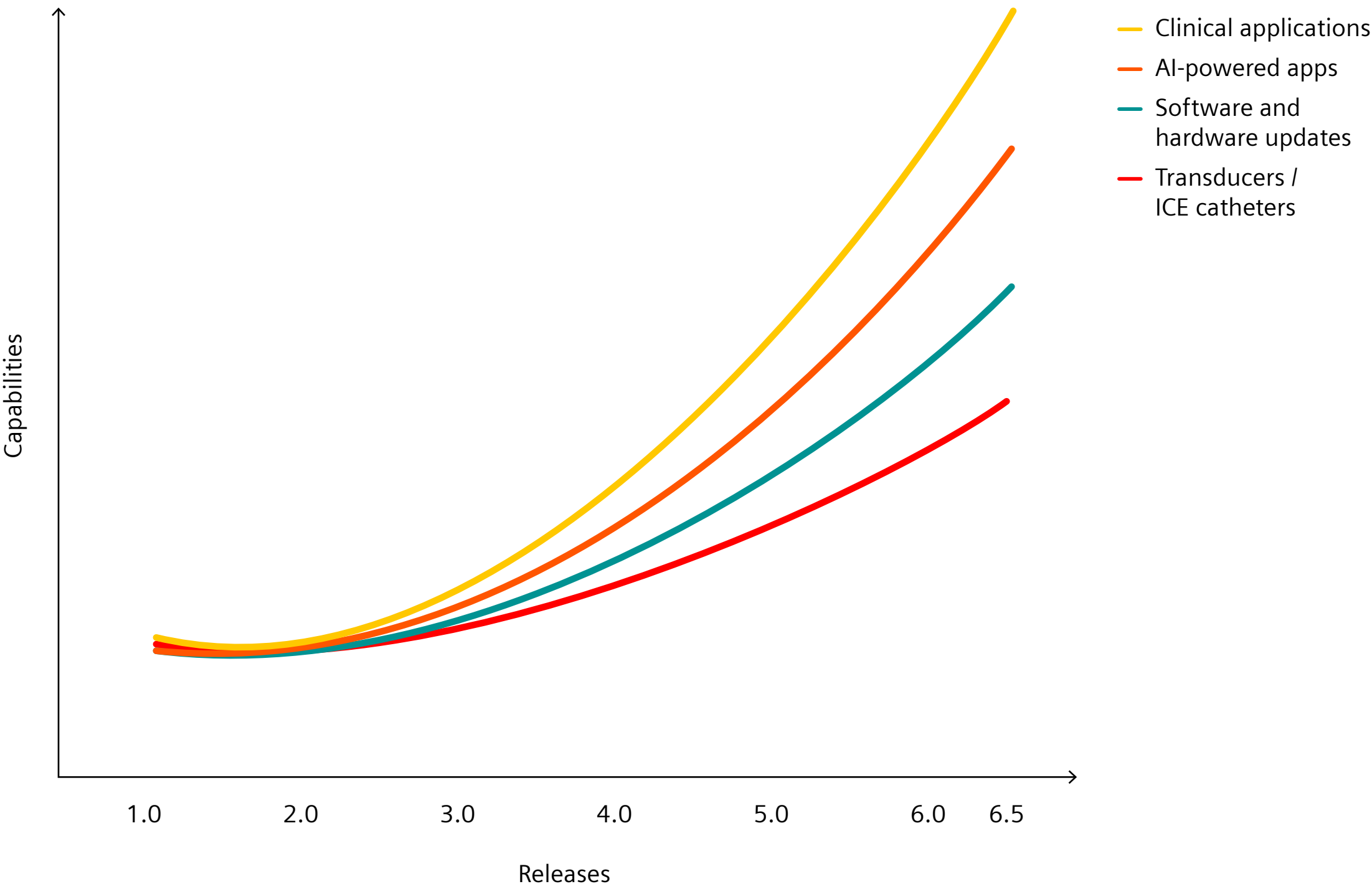
### Remote software updates

Remote installation of the latest software updates to protect against cyber threats

# More relevant today than ever before

The ACUSON SC2000 PRIME today is completely different from just a few years ago

The ACUSON SC2000 PRIME ultrasound system was developed and continuously improved to revolutionize the world of echocardiography. With ongoing investments in processing power and AI-powered applications as well as IT and security, the ACUSON SC2000 PRIME is more relevant today than ever to face the current challenges of echocardiographers.





The scientific overlay is not that of the individual pictured and is not from a device of Siemens Healthineers.

The products/features mentioned in this document may not be commercially available in all countries. Due to regulatory reasons their future availability cannot be guaranteed. Please contact your local Siemens Healthineers organization for further details. Standalone clinical images may have been cropped to better visualize pathology.

All trademarks are the property of their respective owners.

SOUNDSTAR is a trademark of Biosense Webster, Inc.

AI-powered measurement tools consist of software applications leveraging machine learning-based Artificial Intelligence to achieve the intended outcome and include the eSie Measure workflow acceleration package, eSie Left Heart measurement package, eSie LVA volume LV analysis, eSie Valves advanced analysis package, eSie PISA and eSie Sync volume synchronization tool for TrueFusion.

At Siemens Healthineers, we pioneer breakthroughs in healthcare. For everyone. Everywhere. Sustainably. As a leader in medical technology, we want to advance a world in which breakthroughs in healthcare create new possibilities with a minimal impact on our planet. By consistently bringing innovations to the market, we enable healthcare professionals to innovate personalized care, achieve operational excellence, and transform the system of care.

Our portfolio, spanning in vitro and in vivo diagnostics to image-guided therapy and cancer care, is crucial for clinical decision-making and treatment pathways. With the unique combination of our strengths in patient twinning<sup>1</sup>, precision therapy, as well as digital, data, and artificial intelligence (AI), we are well positioned to take on the greatest challenges in healthcare. We will continue to build on these strengths to help overcome the world’s most threatening diseases, enable efficient operations, and expand access to care.

We are a team of 73,000 Healthineers in over 70 countries passionately pushing the boundaries of what is possible in healthcare to help improve the lives of people around the world.

<sup>1</sup> *Personalization of diagnosis, therapy selection and monitoring, aftercare, and managing health.*

**Siemens Healthineers Headquarters**  
Siemens Healthineers AG  
Siemensstr. 3  
91301 Forchheim, Germany  
Phone: +49 9191 18-0  
siemens-healthineers.com

**Manufacturer**  
Siemens Medical Solutions USA, Inc.  
Ultrasound  
22010 S.E. 51st Street  
Issaquah, WA 98029, USA  
Phone: 1-888-826-9702  
siemens-healthineers.com/ultrasound