



DETAILS, DETAILS

Powerful ultra-high resolution images reveal impressive detail.



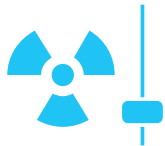
ALL IN ONE

Clarity, speed, and power come together to deliver more information in a single scan.



IT'S PERSONAL

Personalized scans with standardized results promote diagnostic confidence.



YOUR NEEDS

Frequent scans at a lower dose support your neurology and trauma needs.

**Welcome to the new
benchmark in imaging,
for you and your physician.**

Your CT exam appointment information:

Date: _____

Time: _____



YOUR CT EXAM CHECKLIST:

- ☐ Remove all metal objects, such as a belt or jewelry.
- ☐ Bring images from previous examination (including X-rays) with you.
- ☐ Ask your physician if your examination requires contrast. If it does, find out how many hours you will need to fast before the examination.
- ☐ Let your physician know if you have had previous allergic reactions.

**Welcome to the new
benchmark in imaging,
for you and your
physician.**



ENHANCED CT IMAGING HAS ARRIVED AT

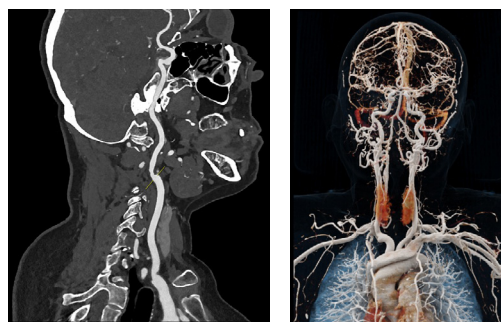
Your journey to health is important to us and CT plays a critical role in your care. With improvements to conventional CT imaging reaching their limits, the time to push boundaries is more important than ever. Don't worry, we've got you covered.

Introducing NAEOTOM Alpha.Prime with Quantum Technology, the world's first single-source photon-counting CT scanner. This revolutionary technology generates images with a new level of detail, enabling your physician to make confident decisions and personalize your treatment plan with precision.

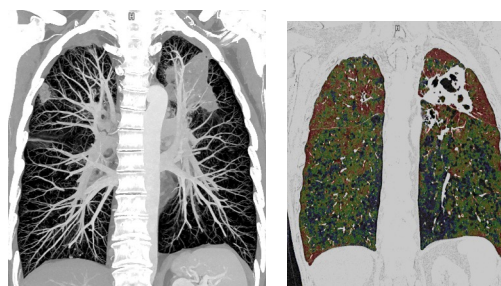


WHAT IS A CT SCAN?

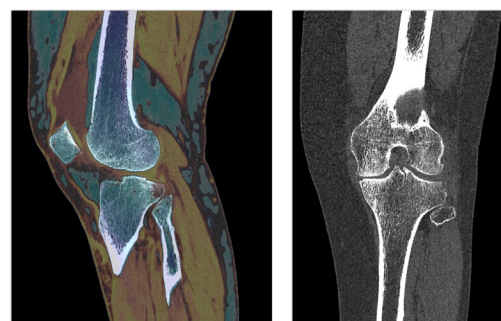
A CT or CAT scan, also known as a computed tomography scan, is a medical imaging method that uses special X-ray equipment to obtain cross-sectional pictures of the body. The CT computer displays these pictures as detailed images of organs, bones, and other tissues. This type of imaging can be very helpful in diagnosing injuries or fractures or in identifying disease in its earliest stages.



Courtesy of Diagnostikum Graz, Austria



Courtesy of Diagnostikum Graz, Austria



Courtesy of Semmelweis University, Budapest, Hungary

WHAT HAPPENS DURING MY EXAM?

You'll be asked to change into a gown and then you will lie down on a patient table. The CT system is shaped like a large doughnut called the gantry and the center of it is called the bore or tunnel. The patient table will move slowly through the gantry's bore. Once the table and you are in the correct position, your CT technologist may ask you to hold your breath or not to move. You'll hear the CT system, which makes a low whirring sound.

WHAT IS A CT SCAN WITH CONTRAST?

For some CT examinations, a contrast medium (sometimes called a dye) is given to help highlight a particular area of your body. Depending on the type of exam, contrast medium is administered in a number of different ways. You might, for example, be asked to drink it or it might be injected into a vein. Keep in mind the contrast medium contains iodine, which can cause an allergic reaction in some people.

ARE THERE RISKS ASSOCIATED WITH A CT SCAN?

CT scans use X-rays, invisible beams of ionizing radiation that pass through the body and are altered by different tissues to create images. At our facility, we are dedicated to achieving the highest levels of patient safety. For this reason, we use CT imaging technology that enables high quality images using low radiation doses. Our investment in low dose CT technology is part of our ongoing commitment to your health and well-being.

Please consult your physician prior to the examination regarding existing allergies or any questions about contrast medium.