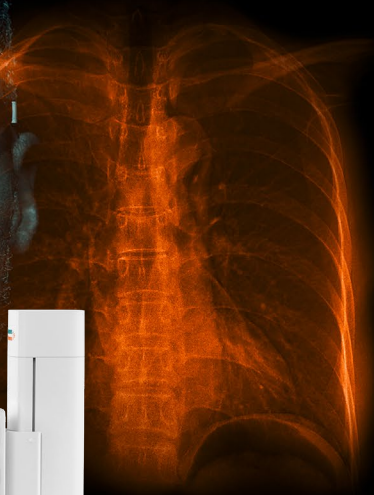


MULTIX Impact E

Essential imaging. Everywhere.

siemens-healthineers.com/multix-impact-e



MULTIX Impact E is not commercially available in all countries. Its future availability cannot be guaranteed. Please contact your local Siemens Healthineers organization for further details.

SIEMENS
Healthineers

Digital imaging for everyone

All around the globe, many patients still have limited access to quality digital X-ray imaging. MULTIX Impact E has been purposefully designed to improve access to care and to open new opportunities for digital imaging – for everyone, everywhere. The versatile floor-mounted radiography system features all you need for easy, intuitive system operation, lets you detect anatomical details at low dose, and comes at an attractive price even for limited budgets.

Tap the potential of quality digital X-ray imaging

Analog and computed radiography (CR) systems have significant limitations when compared to digital radiography (DR). They require higher patient dose, more workflow steps for system preparation and scanning, and additional costly resources including chemical developer solutions or cassettes – to mention just a few constraints.

Increase efficiency and save valuable time with a digital X-ray system



Experience a digital one-stop workflow – and discover how you can efficiently provide high-quality X-ray images that support accurate diagnoses. With MULTIX Impact E. The floor-mounted X-ray system offers:

- Essential digital technologies
- Easy and intuitive system handling
- Affordable Siemens Healthineers quality designed to deliver a low Total Cost of Ownership (TCO)
- Plug-and-scan operation also in limited infrastructural settings
- High cybersecurity standards

Focus on quality imaging

Outdated equipment can lead to inefficient image acquisition and reading. MULTIX Impact E offers all the digital essentials you need for intuitive system operation, low-dose quality imaging, and confident reading – simply everywhere.

Essential digital technologies

MULTIX Impact E provides all you need for an efficient and streamlined imaging procedure. It enables easy system preparation and scanning, offers a fast digital workflow from patient registration to image post-processing and documentation, and delivers high-quality images you can easily share with patients and peers.

Smooth patient positioning

Featuring an ergonomically designed free-floating tabletop, the patient table allows you to smoothly transfer and position patients of all shapes and sizes. Thanks to its impressive longitudinal coverage, tall patients can be imaged with no need for repositioning. In addition, the Bucky wall stand¹ lets you scan patients in various positions.

Easy and intuitive system handling

MULTIX Impact E is so easy to operate that you can focus on your patients and help them relax. You can quickly prepare the scan at the tube-mounted Touch User Interface (TUI)¹ and easily move the tube into the right position with the ergonomic handles. The Positioning Guide helps you get the image right the first time. And the imaging system offers an easy-to-understand visual logic that makes system operation highly intuitive.

Safely and efficiently scan patients

MULTIX Impact E offers many features that help reduce dose – including the dose-efficient CSI detector as well as optimized and preconfigured Organ Programs (OGPs). Also, you can select copper filters via a rotating pre-filter disk to absorb unnecessary radiation. And the grid can be removed to further reduce dose.



Touch user interface for easy scan preparation right at the system

¹ Option

Acquire quality digital images at low dose with ease

Easy image acquisition

MULTIX Impact E comes with a full-size, wireless Core XL flat detector. It covers all your imaging needs and can be used in the table, Bucky wall stand¹, or for free exposures. The smart in-tray charging can speed up your digital workflow because the detector is always ready for use. In addition, the ergonomic design with handle allows you to safely transport the detector.

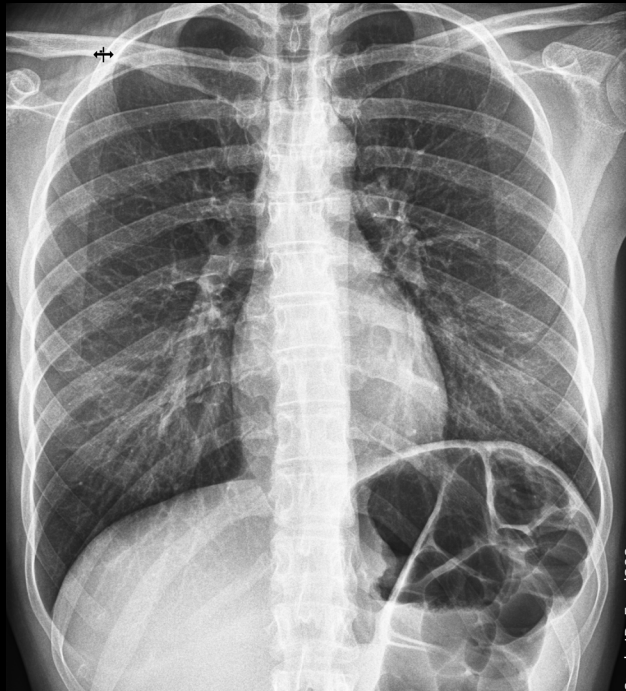
¹ Option

Speed up imaging

A selection of graphical Organ Programs (OGPs) simplifies examination preparation and speeds up your digital imaging workflow in daily routine. Simply select the organ you want to image with one click, and MULTIX Impact E automatically adjusts the imaging parameters and post-processing settings. This helps minimize errors and reduce dose. And dedicated pediatric organ programs allow you to further reduce dose for children.

Images in your preferred flavor

MULTIX Impact E lets you view clinical images in your preferred look and feel – for confident image reading.



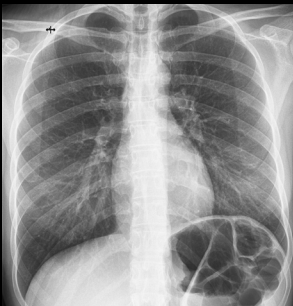
Standard image



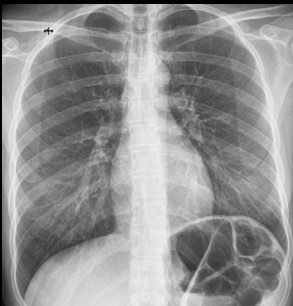
Flavor 1



Flavor 2



Flavor 3



Flavor 4

Study ID: 5aad208

The clinical image was taken with a MULTIX Impact Family system using the same detector (Core XL) and imaging system as MULTIX Impact E.

Focus on economic value

Healthcare providers worldwide seek to get the most for their budget. MULTIX Impact E is a cost-effective and reliable investment that can help improve your revenue streams for the long run – with a trusted partner always by your side.

Low Total Cost of Ownership

With MULTIX Impact E, you opt for trusted Siemens Healthineers quality at an attractive price – with low costs along the system lifecycle. For example, you can keep installation costs low by using the existing power infrastructure.^{1, 2}

Efficient online training

The intuitive-to-operate MULTIX Impact E keeps training effort and costs low. The comprehensive and engaging training material is available on our free-to-access PEPconnect³ platform. Every participant will receive a certificate after finishing the mandatory training.

Flexible system setting

Whatever your clinical and economic needs, MULTIX Impact E is always a good choice. You can choose between two configurations: with or without the Bucky wall stand¹. By omitting the Bucky wall stand¹, you can save valuable room space – or use the system for special clinical use cases.

Optimal service coverage, worldwide

To reliably deliver high patient care, you need reliable equipment. With our comprehensive service offerings, we keep your operations running – wherever you are. Our remote services keep system uptime high and service costs low. And we ensure access to Siemens Healthineers certified spare parts until 10 years after you purchased your MULTIX Impact E.

¹ Option

² Due to technical requirements, single-phase generator is currently only available in the U.S.

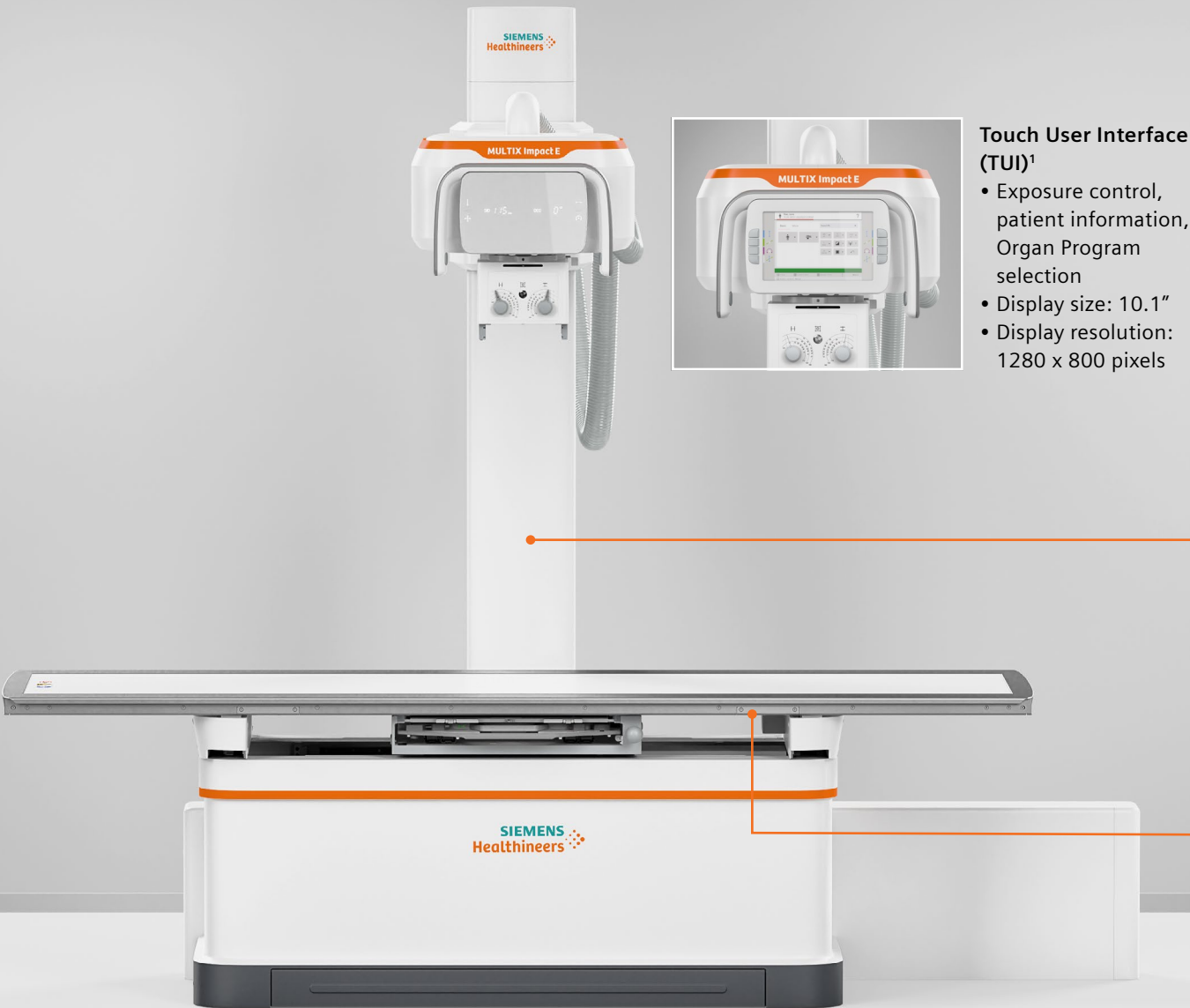
³ Internet connection required

High security standards

Patient data are particularly sensitive data. That's why having highest possible cybersecurity standards is key in our connected world. MULTIX Impact E reliably protects patient data against modern malware with whitelisting and offers advanced user management with role-based access control.



Technical specifications: MULTIX Impact E



Touch User Interface (TUI)¹

- Exposure control, patient information, Organ Program selection
- Display size: 10.1"
- Display resolution: 1280 x 800 pixels



Bucky wall stand¹ (BWS)

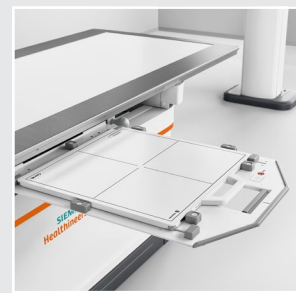
- Manual movement control
- In-tray detector charging
- Vertical travel range: from 31.5 cm up to 175 cm (12.4" up to 69")
- Low central beam height: 31.5 cm (12.4")

Floor-mounted tube

- Manual positioning
- Rotatable Tubeside Control Module (TCM) displaying the digital SID to control system movements
- Manual collimator to precisely align patients to X-ray center beam
- Rotation range around vertical axis: ±90°
- Manual rotation around horizontal axis: ±140°

Fixed table

- Tube-detector tracking
- In-tray detector charging
- Height: 70 cm (27.5")
- Weight capacity: 300 kg (661 lbs)
- Maximum longitudinal coverage: 190 cm (6.2 ft)
- Comfortable patient positioning on floating tabletop



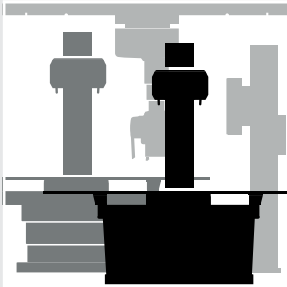
Core XL detector

- Full-size 43 cm x 43 cm (17" x 17") wireless flat panel detector
- Dose-efficient CSI detector



Single-phase generator^{1,2}

- Single-phase main power supply
- Maximum output: 40 kW
- Integrated into table cabinet



MULTIX Impact E is a member of the trusted MULTIX Impact Family.

For more information, please visit:
siemens-healthineers.com/multix-impact

Why Siemens Healthineers

We pioneer breakthroughs in healthcare. For everyone. Everywhere. The innovative healthcare solutions offered by Siemens Healthineers are crucial for clinical decision-making and treatment pathways. We are a team of 66,000 highly dedicated employees across more than 70 countries passionately pushing the boundaries of what's possible in healthcare to help improve people's lives around the world.

¹ Option
² Due to technical requirements, single-phase generator is currently only available in the U.S.

MULTIX Impact E is not commercially available in all countries. Its future availability cannot be guaranteed. Please contact your local Siemens Healthineers organization for further details.

The information in this document contains general descriptions of the technical options available and may not always apply in individual cases.

Siemens Healthineers reserves the right to modify the design and specifications contained herein without prior notice. Please contact your local Siemens Healthineers sales representative for the most current information.

Any technical data contained in this document may vary within defined tolerances. Original images always lose a certain amount of detail when reproduced.

Siemens Healthineers Headquarters

Siemens Healthcare GmbH
Henkestr. 127
91052 Erlangen, Germany
Phone: +49 9131 84-0
siemens-healthineers.com