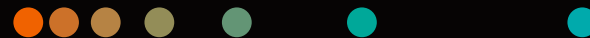




Atellica Portfolio

**Meet demand, on demand**

[siemens-healthineers.com](https://www.siemens-healthineers.com)



**SIEMENS**  
**Healthineers** 

Healthcare systems are continually asked to do more:  
more testing volume, more staffing challenges, more administrative burden.

## The Atellica Portfolio was designed with one goal in mind: less.

Less hands-on work. Less complexity. Less administrative burden. Less waste. Less frustration.

With human-centered engineering that automates routine tasks, you can free your staff from manual work so they can focus on human work.

When your staff has less of what they don't need, they're free to do more of the tasks that truly bolster an organization: connecting patients with the care they need.



### Limit Less

It's hard to think beyond daily demands in highly complex environments. With virtually unlimited configurations and automation capabilities for any environment and workload, the Atellica Portfolio fits into the diagnostic ecosystem you imagine.



### Engineered Solutions

Siemens Healthineers stands for pioneering breakthroughs—and the Atellica Portfolio is purposefully engineered with you in mind. With smart automation that anticipates your lab's needs in advance, it's the cutting-edge solution that's surprisingly simple to operate.



### Enterprise Intelligence

With advanced workflow intelligence and analytics from the Atellica Portfolio, your staff can spend less time sorting data and more time doing what they do best: improving patient care.



### Built for Resiliency

With future-focused innovations that raise the bar on safety and sustainability, and assays that set a new standard of care, the Atellica Portfolio helps keep you relevant with evolving clinical needs.

# Atellica Portfolio

**Our family of clinical laboratory analyzers, designed to support your specific needs.**

Offered in over 300 configurations to provide the best-fit solution for your diagnostic laboratory enterprise, the portfolio includes Atellica CI Analyzer and Atellica Solution, both with seamless integration to our automation and informatics solutions to optimize productivity.

## What is Atellica Integrated Automation?

Atellica Integrated Automation consolidates revolutionary sample management technology, intelligent software, and informatics to provide workflow efficiency and reduction of biohazard exposure by offering the flexibility to add Sample Handler, Decapper and Sealer modules to an Atellica Solution or Atellica CI Analyzer.



Atellica CI Analyzer with Rack Handler



Atellica CI Analyzer with Atellica Integrated Automation



Atellica Solution



Atellica Integrated Automation (L-shaped)



Atellica Solution with Atellica Integrated Automation



Atellica Direct Connect with FlexLab X



Atellica Solution (linear)



Atellica Solution (U-shaped)

**300+**  
configurations



# Limit Less

**A flourishing diagnostic lab is essential for a healthcare system. But when you're constantly short-staffed and handling high complexity, it's hard to think beyond daily demands.**

With 300+ configuration options, integrated automation capabilities for any environment and workload, and assays that deliver resiliency, the Atellica Portfolio helps anticipate and resolve your lab's challenges.

So, whether you need a compact analyzer with the capabilities of a flagship system, virtually unlimited configurations that deliver purpose-fit solutions, or a fully automated workhorse to handle heavy volumes, we've got you covered. The Atellica Portfolio realizes the diagnostic ecosystem you imagine.



Atellica  
Sealer

Onboard QC

Sorting and  
archiving

Atellica  
Decapper

Atellica solution

**Industry-leading workflow efficiency** and built-in automation that allow you to run with fewer resources

**Numerous configurations**, including linear, U-, and L-shapes, and expanded Atellica CI line of analyzers

**Integrated automation** to increase productivity and efficiency

**75% reduction** in end-to-end manual workflow steps

 **200+** assays

 **20** disease states

 **12** critical assays can be delivered in under 10 minutes



**Atellica Magline**



# Engineered Solutions

Since 1847, the Siemens name has been synonymous with precision engineering—and our latest enhancements to the Atellica Portfolio continue that excellence.

Every last chip, sensor, and line of code have been designed to anticipate what you need and get the job done with almost no hands-on time. In mere minutes, a single technologist can automatically manage calibration and QC, daily sorting, and archiving processes—tasks that used to take hours—to dramatically improve throughput and reduce waste.

Driven by operational simplicity and a consistent user experience across platforms, whether you're new to the lab or an experienced medical technologist, you're always ready to process samples anywhere in the network.



The same user interface is deployed across all platforms for easy use by everyone and a consistent experience to help **minimize training and ensure optimal workflow.**



Moving beyond automatic QC: simple load and go of QC samples which are stored, scheduled and dispatched with full traceability **mitigating delays and reducing costly waste.**



Laborious tasks such as sorting, archiving, and scheduling calibration and QC processes are effortlessly handled, all on a system requiring just **5 minutes of daily hands-on maintenance.**



## Automation Portfolio

Experience scalable automation solutions that provide customized systems to automate diagnostics' most critical functions.

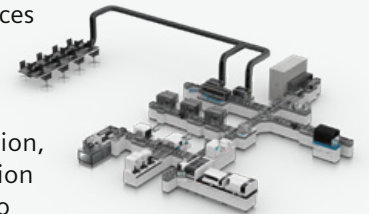
**Atellica Integrated Automation** consolidates revolutionary sample management technology, intelligent software, and informatics to provide workflow efficiency and reduce exposure to biohazards.



**Atellica Task Targeted Automation** streamlines multidisciplinary sample preparation and drives open, advanced clinical workflows with robust, customizable, and scalable robotics delivered by the workflow experts at Siemens Healthineers.\*



**FlexLab X** enhances your laboratory's performance and productivity. This next-generation, total lab automation solution by Inpeco reduces hazardous, repetitive, and strenuous tasks with a customized, end-to-end, one-touch workflow.†



\*Distributed by Siemens Healthcare Diagnostics Inc. Product availability varies by country and cannot be guaranteed. Not available for sale in U.S.

†Product availability varies by country and is subject to varying regulatory requirements. Please contact your local representative for availability.



# Enterprise Intelligence

**Data is everything—but only when it's organized, centralized, and mobilized. That's why the Atellica Portfolio uses AI-enabled workflow intelligence and advanced analytics to turn data into practical insights.**

By seamlessly leveraging data across systems and automation-enabled capabilities, our integrated Informatics solution not only standardizes testing and results management, but also empowers you to proactively monitor and control your diagnostics network.

Our systems will even support your accreditation needs by generating inspection-ready reports automatically—with no prompts or extra software. This built-in intelligence lets your staff spend less time compiling and organizing data and more time doing what they do best: improving patient care.



Built-in intelligence helps operators of every skill-level **feel immediately prepared for their shift.**



Atellica Laboratory Evaluation Suite helps **ensure inspection-readiness, traceability, and ability to satisfy accreditation requirements.**



Patented AI-powered sample management technology **reduces manual interventions,** saving precious time.



## Atellica Diagnostics IT

Integrating informatics to optimize your laboratory management workflows

### Atellica Data Manager

streamlines processes and results management across multiple disciplines and sites. A single system view with user-definable workspaces gives confidence in total network efficiency.



### Atellica Process Manager

offers an 'at a glance' centralized view and control of lab operations, instruments, automation, and IT. Built-in business analytics optimizes clinical operations and improves lab performance through detailed near-real-time interactive reports.



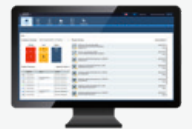
### Atellica Connectivity Manager

enables secure remote access with proactive monitoring and troubleshooting to maximize system uptime. Tap into instrument data for bespoke logging, monitoring, and AI/machine learning projects.



### Atellica Inventory Manager

uses cloud-based software and RFID technology to automate inventory management across multiple locations freeing staff from manual inventory processes and reduces risk of errors. Inventory levels are optimized, improving cost efficiency and reducing waste.





# Built for Resiliency

As technology advances and the needs of patients evolve, healthcare organizations must be ready for anything.

The Atellica Portfolio helps you stay ahead of the curve with future-focused innovations built into every system. We develop every assay in parallel with the analyzers that run them, setting a new standard in assay performance while delivering superior workflow efficiency.

Raise the bar on safety by limiting biohazard exposure, while economical water usage helps you meet sustainability goals. That means your lab can adapt to changing demands without missing a beat.



In-line decapping and foil sealing **minimize risk of exposure to infectious aerosols.**



12 assays have a **10-minute turnaround time** with our intelligent sample routing system, to get critical results to physicians sooner.



Atellica systems **consume the least water** compared to other integrated clinical laboratory systems.



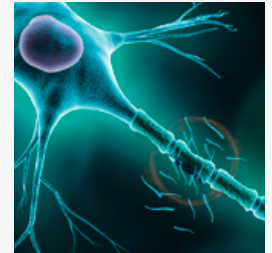
All samples ordered STAT are aspirated **within 60 seconds** — true prioritization without impacting your workflow.



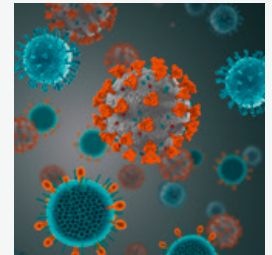
**Reduce repetitive stress injuries** and enable skilled operators to focus on patient-centric activities.

To help you stay ahead of the curve, we develop every assay in parallel with the analyzers that run them—setting a new standard in assay performance.

**Neurofilament light chain (NfL)** is the first CE-marked NfL blood test for Multiple Sclerosis that may aid in identifying MS-related neuronal injury to support better management of the disease.\*



For hospital and reference labs needing **a broad range of ID assays**, the Atellica portfolio offers a comprehensive suite of accurate and reliable tests that meet the highest standards of sensitivity and specificity.



Siemens Healthineers provides a comprehensive and expanding menu of tests to help manage patients throughout the **continuum of cardiovascular disease**.



\*NfL is not for sale in the USA. Not yet commercially available in all countries. Future availability cannot be guaranteed and is dependent on local requirements.

At Siemens Healthineers, we pioneer breakthroughs in healthcare. For everyone. Everywhere. Sustainably. As a leader in medical technology, we want to advance a world in which breakthroughs in healthcare create new possibilities with a minimal impact on our planet. By consistently bringing innovations to the market, we enable healthcare professionals to innovate personalized care, achieve operational excellence, and transform the system of care.

Our portfolio, spanning in vitro and in vivo diagnostics to image-guided therapy and cancer care, is crucial for clinical decision-making and treatment pathways. With the unique combination of our strengths in patient twinning,\* precision therapy, as well as digital, data, and artificial intelligence (AI), we are well positioned to take on the greatest challenges in healthcare. We will continue to build on these strengths to help overcome the world's most threatening diseases, enable efficient operations, and expand access to care.

We are a team of more than 71,000 Healthineers in over 70 countries passionately pushing the boundaries of what is possible in healthcare to help improve the lives of people around the world.

*\*Personalization of diagnosis, therapy selection and monitoring, aftercare, and managing health.*

Atellica and all associated marks are trademarks of Siemens Healthcare Diagnostics Inc., or its affiliates. All other trademarks and brands are the property of their respective owners.

Product availability varies by country and is subject to varying regulatory requirements. Please contact your local representative for availability. FlexLab X is manufactured by Inpeco and distributed by Siemens Healthcare Diagnostics Inc. FlexLab is a trademark of Inpeco SA.

---

**Siemens Healthineers Headquarters**

Siemens Healthineers AG  
Siemensstr. 3  
91301 Forchheim, Germany  
Phone: +49 9191 18-0  
siemens-healthineers.com

**Published by**

Siemens Healthcare Diagnostics Inc.  
Core Lab Solutions  
511 Benedict Avenue  
Tarrytown, NY 10591-5005  
USA  
Phone: +1 914-631-8000