

# How citizens of São Paulo gain access to personalized care

with Galileu Health, powered by eHealth Solutions<sup>1</sup>

► Project Go-Live: February 2024

**Galileu Health** is a digital solutions company based in São Paulo, Brazil. They connect patients and HCPs and provide access to healthcare for large populations. Galileu's ecosystem of solutions uses Siemens Healthineers' **eHealth platform as a basis** to offer and promote access to quality care through health journeys, enabling further AI algorithms to personalize care. They operate in areas such as ambulatory, urgencies and telecardiology in the metropolitan area of São Paulo and continuously extend their reach in the entire state.



Results in the first year<sup>2</sup> ⌚

**570,000**

Patients continuously monitored

**14,195**

days of life saved in patients with acute myocardial infarction

**1.5m**

Patient interactions

**600,000**

Telehealth consultations

**30.7%**

cost reduction in chronic kidney disease patients undergoing dialysis

**44%**

no-show rate reduction in dialytic sessions in 6 months

**41%**

reduction of emergency room visits

**35%**

decrease in hospital admissions

**18%**

decrease in monthly costs

The statements, data and statistics were provided by the customer of Siemens Healthineers. What were described herein are based on results that were achieved in the customer's unique setting. Because there is no "typical" hospital or clinical institution and many variables exist (e.g., hospital size, samples mix, case mix, level of IT and/or automation adoption) there can be no guarantee that other customers will achieve the same results.

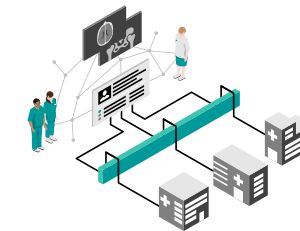
eHealth Solutions consist of several products. eHealth Virtual Visit and eHealth Stroke are manufactured by Siemens Healthineers, Erlangen, Germany. All other products of eHealth Solutions are manufactured by ITH icoserve technology for healthcare GmbH – A Siemens Healthineers Company, Innsbruck, Austria. Products of eHealth Solutions are not intended for diagnostic purposes. The product offerings are not commercially available in all countries. Please contact your local Siemens Healthineers organization for further information.

The product names and/or brands referred to are the property of their respective trademark holders.

1 - In this project, Siemens Healthineers' solution focuses exclusively on delivering digital interoperability, utilizing standardized interfaces.

2 - Source: Galileu Health

**SIEMENS**  
Healthineers



The eHealth platform is the underlying technology, paving the way for **350 clinical protocols** and more than **63,500 AI-generated rules** to stratify and analyze each patient's risk level and disease profile. For more personalized care. For everyone.