

Cerebral palsy with scoliosis

Multitom Rax True2scale Body Scan¹ clinical case
Children's and Youth Hospital "Auf der Bult" Hannover



¹Option

The products/features (mentioned herein) are not commercially available in all countries. Their future availability cannot be guaranteed.

Results from case studies are not predictive of results in other cases. Results in other cases may vary.



Study ID 5aad378

Clinical background and indication for Multitom Rax True2scale Body Scan¹

Patient

Female | Age range 5 - 10 years | BMI range 20 - 25 kg/m²

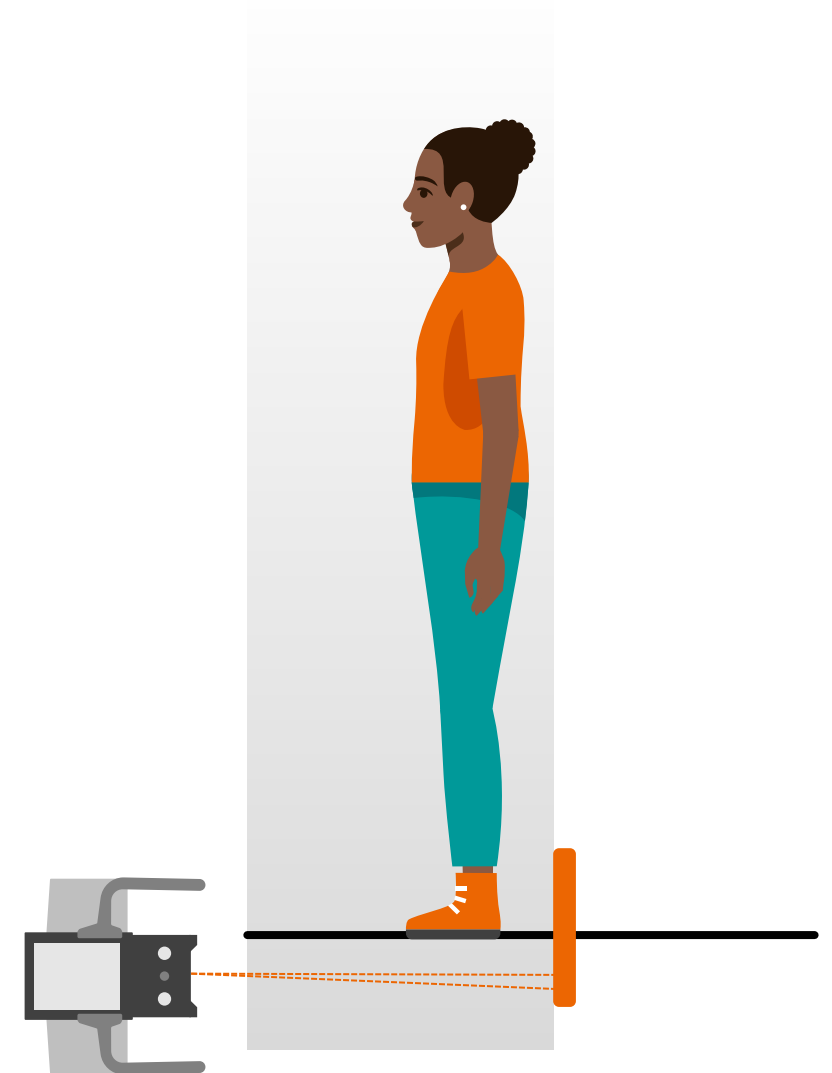
Anamnesis

Bilateral spastic cerebral palsy in condition after severe perinatal asphyxia. Treatment with Vertical Expandable Prosthetic Titanium Rib (VEPTR)/magnetic MAGEC[®]-Rods.

Indication for True2scale Body Scan¹

Scoliosis and VEPTR assessment.

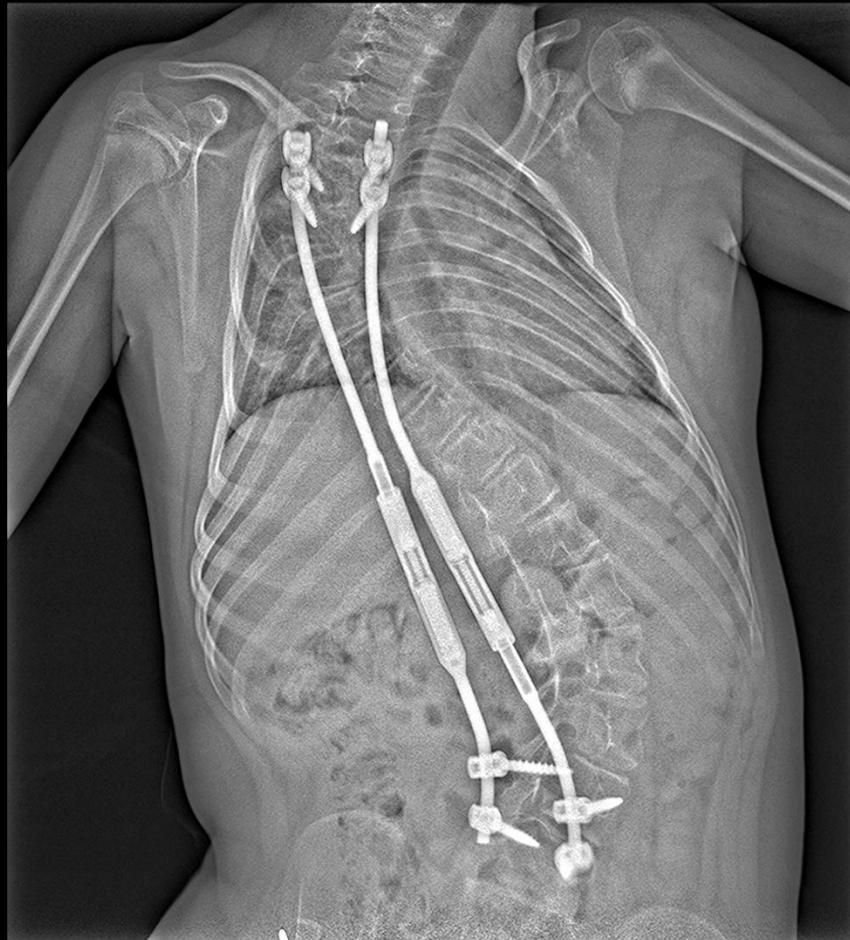
Possible dose savings with foreseeable regular check-ups as part of scoliosis care.



¹ Option

The products/features (mentioned herein) are not commercially available in all countries. Their future availability cannot be guaranteed.

Multitom Rax True2scale Body Scan¹ Settings



True2scale Body Scan in one plane using **table S** protocol

<i>Scan range</i>	36 cm
<i>Scan time</i>	2 sec
<i>Tube voltage</i>	81 kV
<i>Dose area product</i>	2.7 $\mu\text{Gy}\cdot\text{m}^2$

¹ Option

The products/features (mentioned herein) are not commercially available in all countries.
Their future availability cannot be guaranteed.

Multitom Rax True2scale Body Scan¹

Diagnostic findings

S-shaped thoracolumbar scoliosis.

No evidence of a dislocation or a material breakage in the condition after the Vertical Expandable Prosthetic Titanium Rib (VEPTR) system extension.

Pediatric orthopedic support for planning the further extension of the rod. An exchange of the VEPTR is expected to be necessary in a few years.



¹ Option

The products/features (mentioned herein) are not commercially available in all countries. Their future availability cannot be guaranteed.



“Spatial resolution, image contrast and noise are sufficient for answering the clinical question using True2scale Body Scan.”¹

Jürgen Weidemann, MD

Chief Physician Pediatric Radiology, Children's and Youth Hospital "Auf der Bult" Hannover

¹The statements by Siemens Healthineers customers described herein are based on results that were achieved in the customer's unique setting. Since there is no “typical” hospital and many variables exist (e.g., hospital size, case mix, level of IT adoption) there can be no guarantee that other customers will achieve the same results.



The products/features (mentioned herein) are not commercially available in all countries. Their future availability cannot be guaranteed. True2scale Body Scan is an option.

Results from case studies are not predictive of results in other cases. Results in other cases may vary.

Dr. Jürgen Weidemann is employed by an institution that receives financial support from Siemens Healthineers for collaborations.