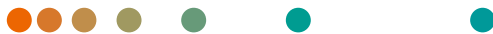


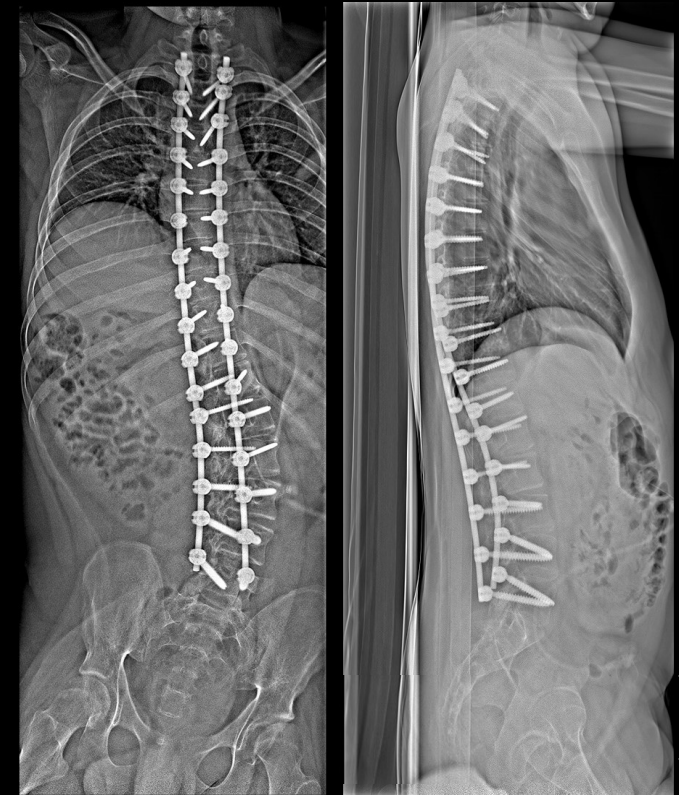
# Control of potential dislocation after spondylodesis

Multitom Rax True2scale Body Scan<sup>1</sup> clinical case  
Children's and Youth Hospital "Auf der Bult" Hannover



<sup>1</sup> Option

The products/features (mentioned herein) are not commercially available in all countries. Their future availability cannot be guaranteed. Results from case studies are not predictive of results in other cases. Results in other cases may vary.



Study ID 5aad373

# Clinical background and indication for Multitom Rax True2scale Body Scan<sup>1</sup>

## Patient

Male | Age range 15 - 20 years | BMI range 20 - 25 kg/m<sup>2</sup>

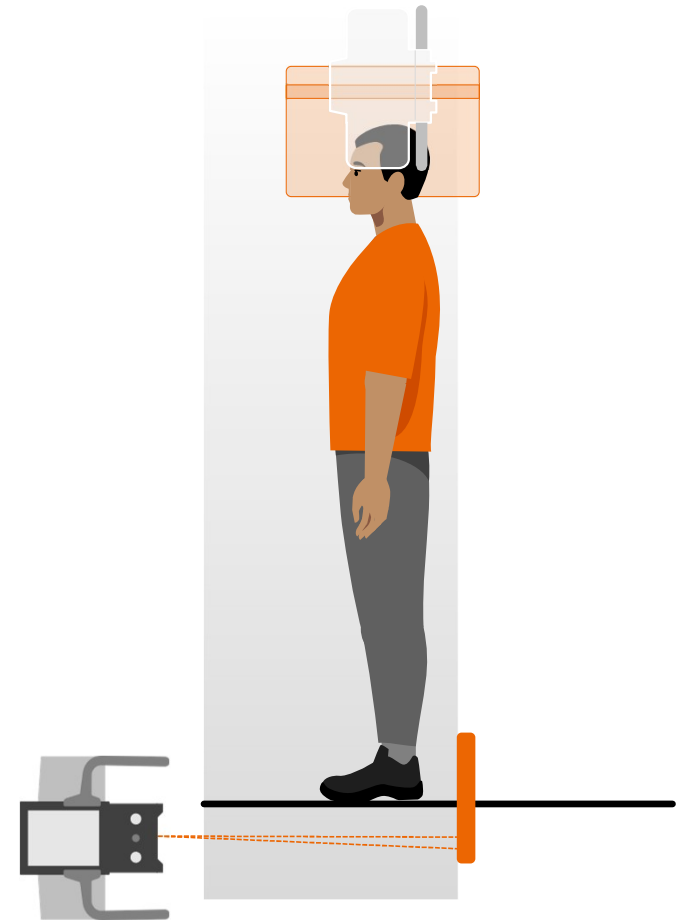
## Anamnesis

Treatment of scoliosis with spinal fusion one year previously.

## Indication for True2scale Body Scan<sup>1</sup>

Control of dislocation of implant needed.

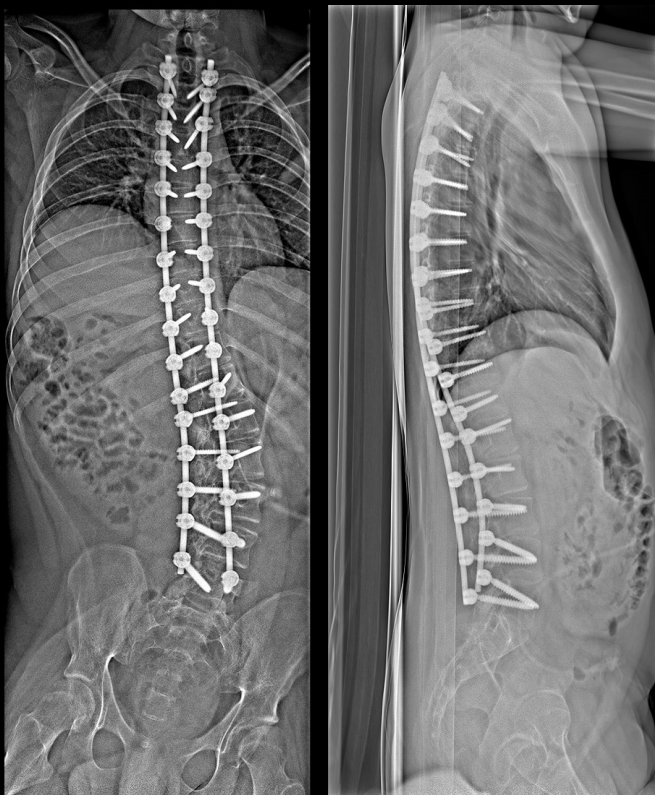
Possible dose savings with foreseeable regular check-ups as part of scoliosis care.



<sup>1</sup> Option

The products/features (mentioned herein) are not commercially available in all countries. Their future availability cannot be guaranteed.

# Multitom Rax True2scale Body Scan<sup>1</sup> Settings



Study ID 5aad373

<sup>1</sup> Option,  
The products/features (mentioned herein) are not commercially available in all  
countries. Their future availability cannot be guaranteed

## True2scale Body Scan in two planes using **table M** protocol

*Dose area product* 71.7  $\mu\text{Gy}\cdot\text{m}^2$

### Anterior posterior examination

*Scan range* 64 cm  
*Scan time* 3 sec  
*Tube voltage* 81 kV  
*Current time product* 108 mAs

### Lateral examination

*Scan range* 55 cm  
*Scan time* 4 sec  
*Tube voltage* 117 kV  
*Current time product* 164 mAs

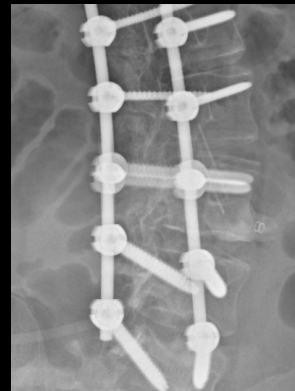
# Multitom Rax True2scale Body Scan<sup>1</sup>

## Diagnostic findings

Progressive neurological disease with cognitive, motor and linguistic regressions (neuronal ceroid lipofuscinosis CLN 6 mutation). Control of dislocation of internal fixator needed.

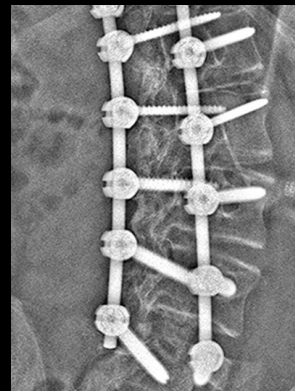
No dislocation of implant visible on True2scale Body Scan.

*Stitching artifact on former examination using conventional tilt technique*



Study ID 5aad375

*No artifact using True2scale Body Scan*



Study ID 5aad373



Study ID 5aad373

<sup>1</sup> Option

The products/features (mentioned herein) are not commercially available in all countries. Their future availability cannot be guaranteed.



*“True2scale Body Scan offers the advantage of no stitching artifacts compared to ortho examinations using the conventional tilt technique.”<sup>1</sup>*

**Jürgen Weidemann, MD**

Chief Physician Pediatric Radiology, Children's and Youth Hospital "Auf der Bult" Hannover

<sup>1</sup> The statements by Siemens Healthineers customers described herein are based on results that were achieved in the customer's unique setting. Since there is no "typical" hospital and many variables exist (e.g., hospital size, case mix, level of IT adoption) there can be no guarantee that other customers will achieve the same results.





The products/features (mentioned herein) are not commercially available in all countries. Their future availability cannot be guaranteed. True2scale Body Scan is an option.

Results from case studies are not predictive of results in other cases. Results in other cases may vary.

Dr. Jürgen Weidemann is employed by an institution that receives financial support from Siemens Healthineers for collaborations.