

On account of certain regional limitations of sales rights and service availability, we cannot guarantee that all products included in this brochure are available through the Siemens Healthineers sales organization worldwide. Availability and packaging may vary by country and is subject to change without prior notice. Some/All of the features and products described herein may not be available in the United States.

The information in this document contains general descriptions of the technical options available and may not always apply in individual cases. Siemens Healthineers reserves the right to modify the design and specifications contained herein without prior notice. Please contact your local Siemens Healthineers sales representative for the most current information.

Note: Any technical data contained in this document may vary within defined tolerances. Original images always lose a certain amount of detail when reproduced. The products/features and/or service offerings (here mentioned) are not commercially available in all countries and/or for all modalities. If the services are not marketed in countries due to regulatory or other reasons, the service offering cannot be guaranteed. Please contact your local Siemens Healthineers organization for further details. The statements by Siemens Healthineers' customers described herein are based on results that were achieved in the customer's unique setting. Since there is no "typical" hospital and many variables exist (e.g., hospital size, case mix, level of IT adoption) there can be no guarantee that other customers will achieve the same results.

¹ We assume a flow rate of 15 ml/s and an X-ray delay of zero seconds.

² Poon et al., Eurointervention, 2012; Maeda et al., J Card Surg, 2012

³ Poon et al., Eurointervention, 2012

Siemens Healthineers Headquarters

Siemens Healthineers AG
Siemensstr. 3
91301 Forchheim, Germany
Phone: +49 9191 18-0
[siemens-healthineers.com](https://www.siemens-healthineers.com)



Better outcomes in TAVI with ARTIS pheno

A guided TAVI workflow for higher
procedural confidence and efficiency

[siemens-healthineers.com/tavi](https://www.siemens-healthineers.com/tavi)

Keep pace with rapid change

The cardiac landscape for structural heart disease is changing rapidly. Since the first TAVI new generations of valves evolved and indications for transcatheter therapies adopted.

The heart team is facing high-risk patients suffering from frailty, renal insufficiency, respiratory problems and other comorbidities. Proper device selection and optimal implantation are key for superior outcome.

Demanding cases, the complexity of devices and therapy options are calling for the integration of different modalities in one hybrid suite. The imaging system needs to be easy to use, allowing full focus on the implantation by guided workflows and an excellent image quality at the lowest reasonable dose.

Ready for the world of cardiovascular interventions

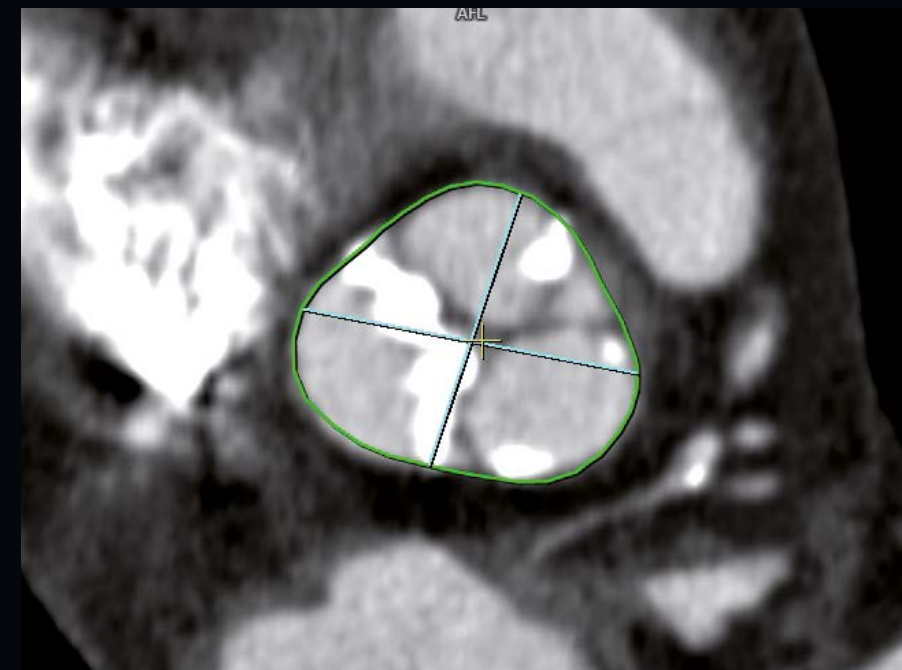
Engineered to be truly patient-oriented, ARTIS pheno is a unique angiography system for individualized preprocedural planning, intraoperative guidance, and immediate assessment – regardless of patient condition or procedure complexity. It also helps keep the working environment clean at all times.



Clinical Case

Treatment of patients with comorbidities is no issue

A 79 years old male patient presented with a severe symptomatic high-grade aortic stenosis. As a relevant comorbidity, he suffers from chronic obstructive pulmonary disease. Implant selection, device sizing and access planning have been done preoperatively based on computed tomography. A transfemoral access and a Medtronic Evolut R have been chosen. The TAVI has been performed under conscious sedation.



Step 1

3D acquisition – Short scan times for reduced contrast agent usage

Intra-operative 3D image acquisition is easier than ever before. The 3D Wizard provides protocols tailored to the procedure. A step-by-step guidance leads the user quickly to a perfect 3D image.

Patients with impaired kidney function benefit from fast intra-operative 3D imaging and less contrast media usage. *syngo* DynaCT acquires 3D images in less than five seconds. Compared to previous protocols this saves contrast agent¹. Faster *syngo* DynaCT reduces also motion artefacts in the 3D image.

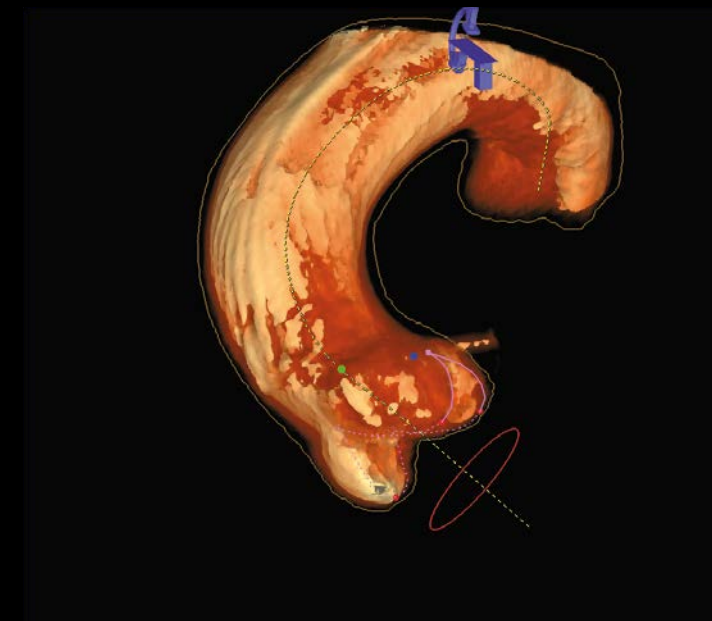


Step 2

Automated planning saves time and increases confidence

syngo Aortic Valve Guidance provides 3D image reconstruction and automatic segmentation. The software indicates the most important anatomical landmarks such as the lowest cusp points, the coronary ostiae and the centerline.

The three lowest cusp points are defining a circle. By adjusting of the projection plane the circle is transformed into a straight line providing the optimal view. The C-arm travels into this view by a push of a button. The distance of the circle from the annulus can be changed to display the desired implantation height.



Step 3

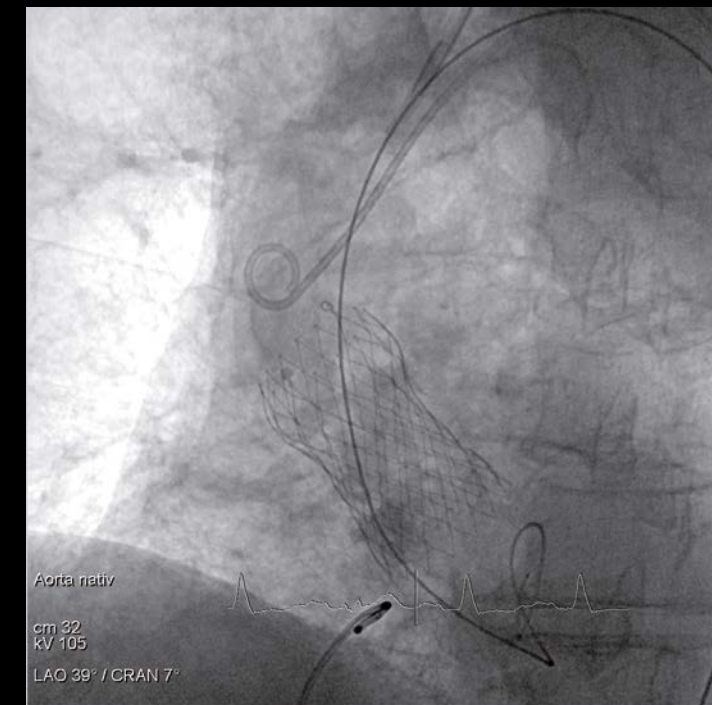
Deployment of the valve

Fusion imaging provides continuous guidance throughout the deployment phase of the valve without additional contrast media usage². A pre-operative CT can be fused with only two fluoro shots from different angles. Using fusion with preoperative CT, the overall amount of contrast media during the procedure can be reduced even more.



ARTIS pheno provides Live 2k imaging that visualized even the smallest details. StructureScout optimizes the visibility of devices, and contrast media at the right dose independent of procedure or material type.

As a final result the valve is clearly visible in the context of the heart.



Step 4

Verification through superior image quality in 2D and 3D

The final deployment of the valve can be assessed right away at the table. ARTIS pheno with syngo Aortic Valve Guidance potentially doubles the quality in valve positioning². This could lead to less paravalvular leaks and less readmissions.

ARTIS pheno is also ready for *syngo* TrueFusion. The fusion of fluoroscopy with TEE landmarks to guide even to complex interventions such as paravalvular leak closures.



A hybrid operating room for multi-disciplinary usage

- ARTIS pheno robotic angiography system
- Siemens multi-tilt table with power-assisted table top, Pilot Module and lower-body radiation protection
- Two large displays on each side of the table
- Integrated Sensis hemodynamic recording system

Multidisciplinary use:

- Interventional cardiology
- Structural heart disease
- EP
- Vascular surgery



"I am deeply convinced that all cardiovascular interventionalists will use such a system in a couple of years. With multi-modal imaging, innovative imaging chains, image fusion and different post-processing technologies in one system, we can manage more complex cases faster and less invasively."

Prof. Dr. med. Bernhard Schieffer
UKGM, 2017



System information

For further information, please see siemens-healthineers.com/artis-pheno or contact your local sales representative.

Benefit of the Robotic C-arm in the Hybrid OR

1. Precise targeting and automatic image fusion using pre-operative MRI and *syngo* DynaCT with *syngo* Fusion Package
2. Intraoperative image control with *syngo* DynaCT without patient transfer, saving a significant amount of time
3. Increased procedural success by using intraoperative 3D imaging for quality control
4. Less radiation dose compared to workflows that include perioperative CT
5. Increased patient safety by reducing patient transfer and anesthesia times
6. Financial benefits for the hospital through optimized resources and higher utilization of the Hybrid OR

Want to know more?



For more information on our workflows, products, and solutions, please scan the adjacent QR code or open siemens-healthineers.com/tavi