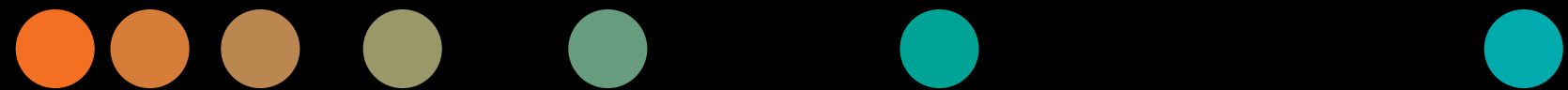
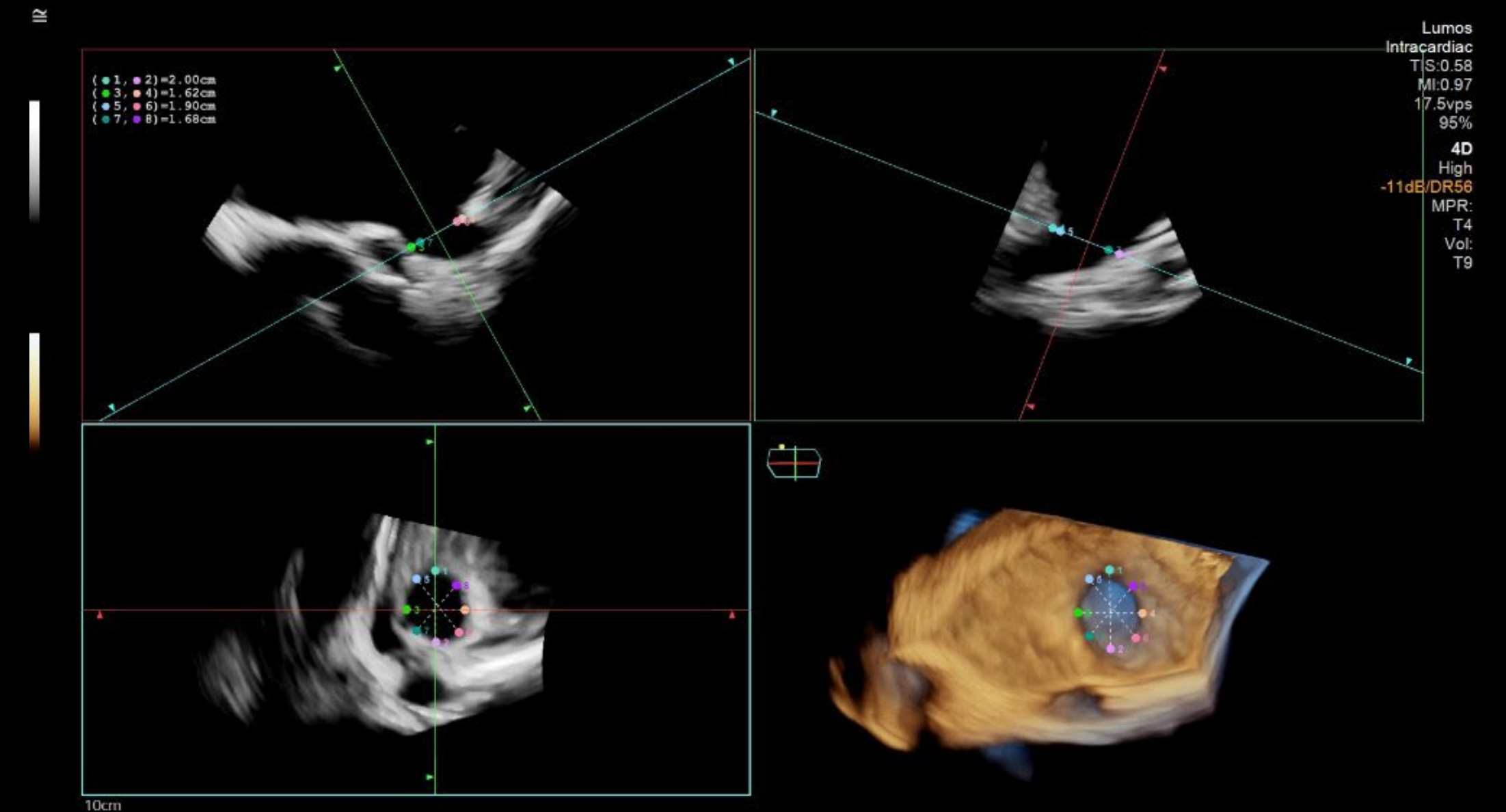


AcuNav Lumos 4D ICE catheter

Light the way

siemens-healthineers.com/AcuNavLumos



Advanced procedures require advanced imaging

60 million impacted by structural heart defects

~25% of U.S. adults have structural heart defects— expected to grow to 34% by 2030.¹

43 million impacted by atrial fibrillation (AFib)

AFib is the most common arrhythmia globally —expected to grow to 72 million by 2050.²

Structural heart disease procedures will increase almost three-fold by 2030

20% compound annual growth rate in LAAC, TAVR, MitraClip® and tricuspid procedures projected from 2020 to 2030.³

Moderate/Severe Aortic Stenosis

1 in 8

people aged >75 yrs⁴

Atrial Fibrillation

5X more likely

for people aged >65 yrs⁵

Moderate/Severe Mitral Regurgitation

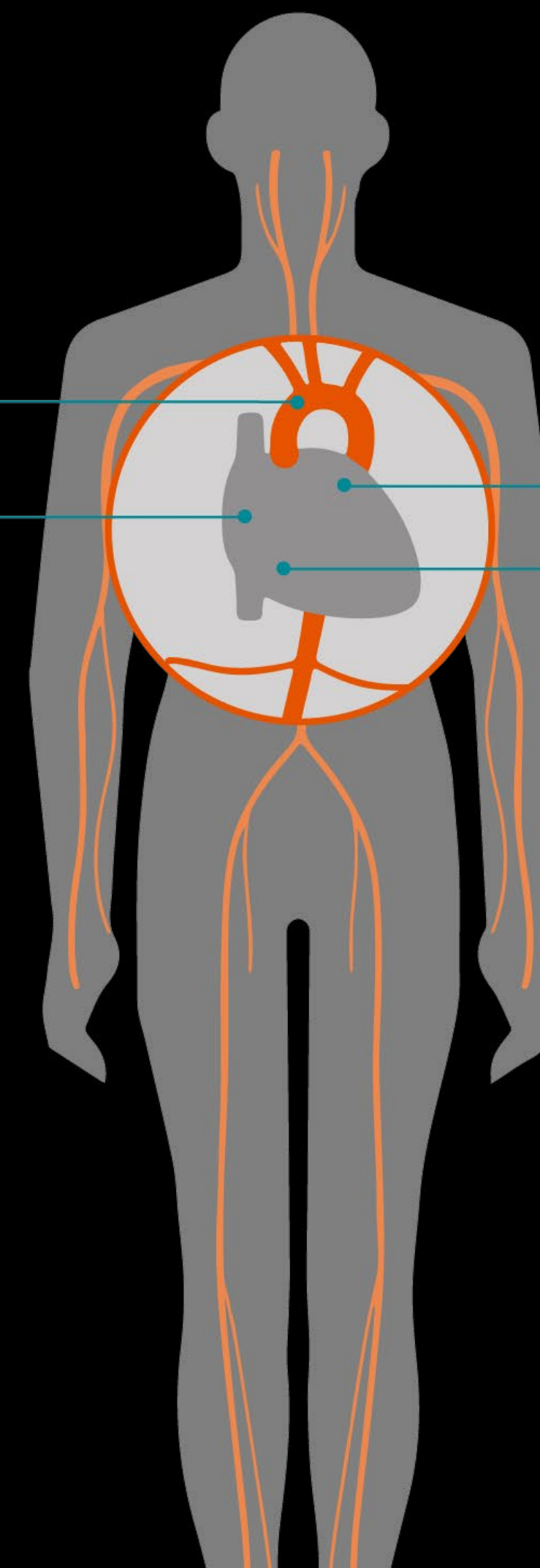
1 in 10

people aged >75 yrs⁶

Moderate/Severe Tricuspid Regurgitation

1 in 10

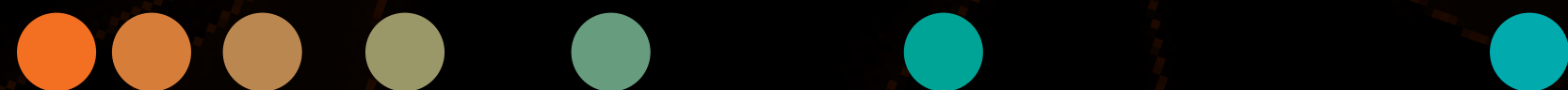
people aged >75 yrs⁷



AcuNav Lumos 4D ICE catheter

Illuminate what's possible in intracardiac imaging

Together, AcuNav Lumos and ACUSON Origin enable more treatment possibilities for more patients through the power of clinically relevant imaging, combined with efficient tools and experienced clinical and educational support.





- Improved **biplane imaging and multiplanar reconstruction (MPR)**, delivers 4D imaging with or without ECG for diagnostic/clinically relevant volume rates. This provides excellence in anatomical assessment and device guidance
- Better leak detection** with real-time 4D color Doppler
- Powered by ACUSON Origin**, an advanced cardiac ultrasound system with AI features for supporting enhanced clinical decision making

Illuminate procedural possibilities



Illuminate: Improved imaging quality unlocks treatment opportunities



Protect: Precise procedural guidance enables efficient teamwork—so you can focus on patient safety



Excel: Expert education and guidance supports procedural excellence, backed by the most experienced clinical ICE team

200+

200+ years combined team experience

2,800+

2,800+ 4D ICE procedures supported

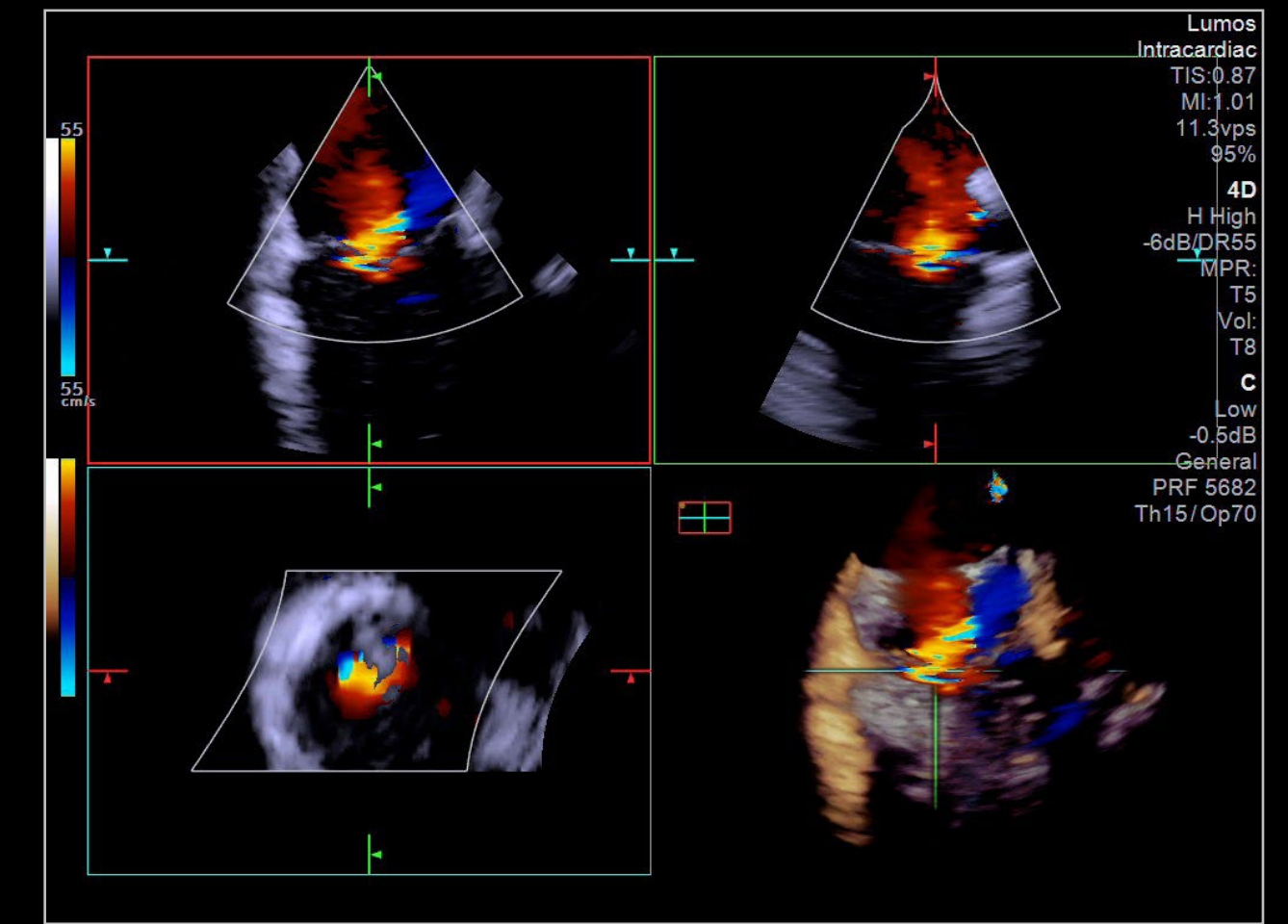
A winning duo: ACUSON Origin + AcuNav Lumos

AcuNav Lumos is powered by ACUSON Origin, an advanced cardiac ultrasound system that enhances workflow efficiency and walk-up usability—the details you need for advanced procedural excellence.

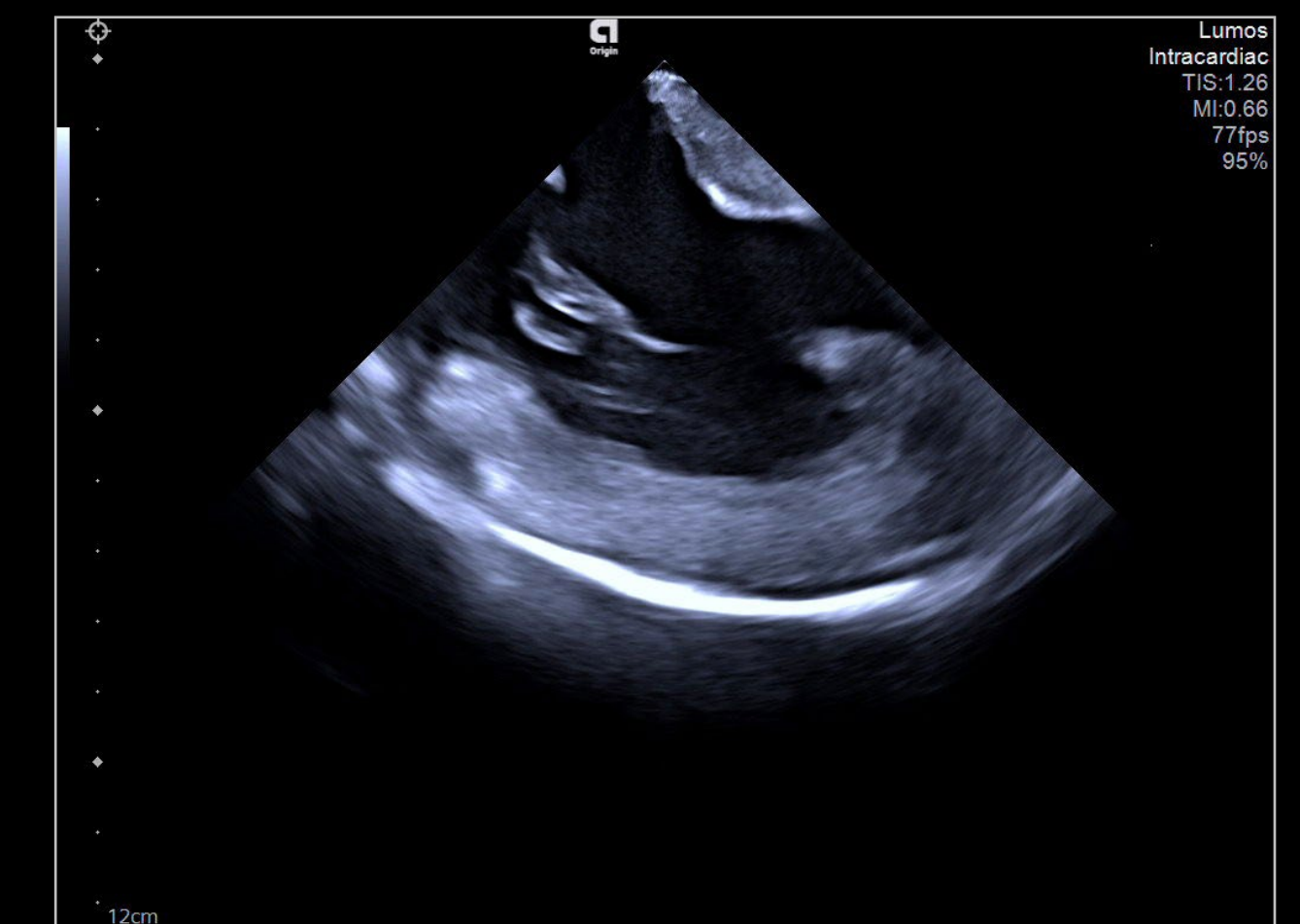
Smart: Semi-automated AI-enabled measurement tools, powered by a database of 2 billion images across multiple modalities, provide precise diagnostic insights for confident treatment, launched with a single button

Clear: Enhanced image quality enables better detection of left atrial appendage, mitral valve, and tricuspid valve compared to current 2D ICE

Easy: Reduce keystrokes and movements with a compact design and ergonomically minded controls

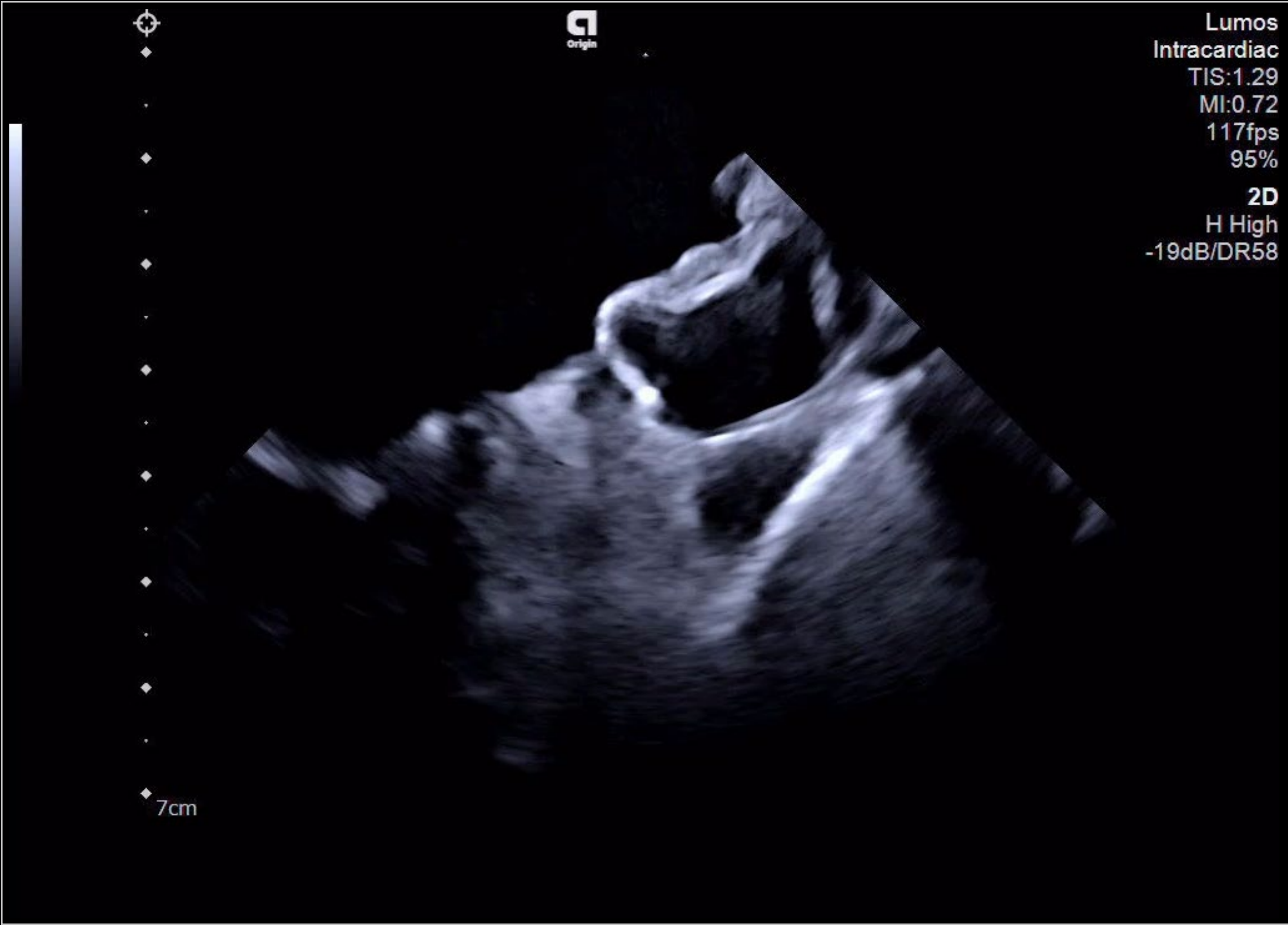


Tricuspid regurgitation 4D color



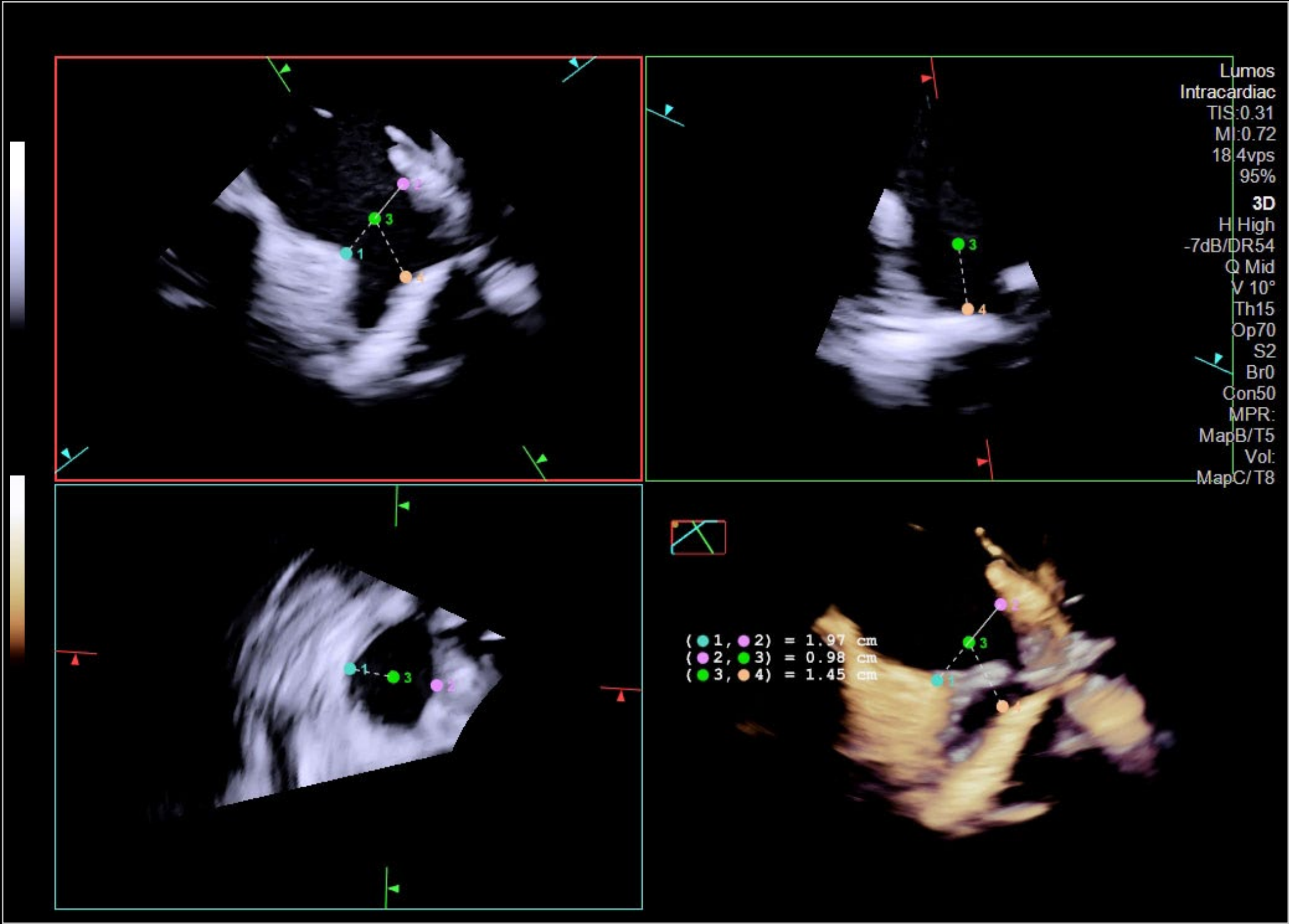
Left ventricle

Comprehensive visualization



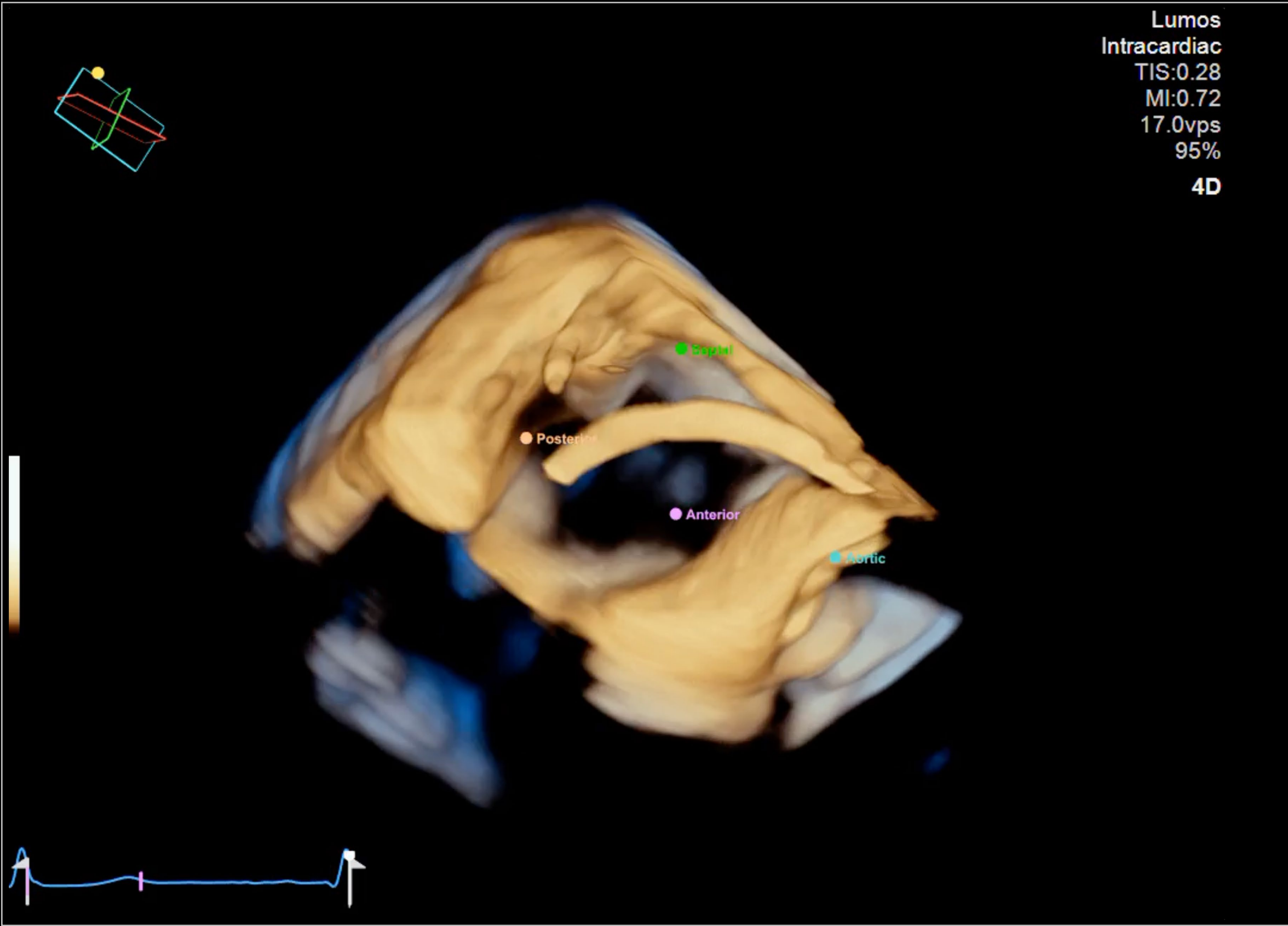
LAAC with Watchman™ device

Advanced 3D measurement tools



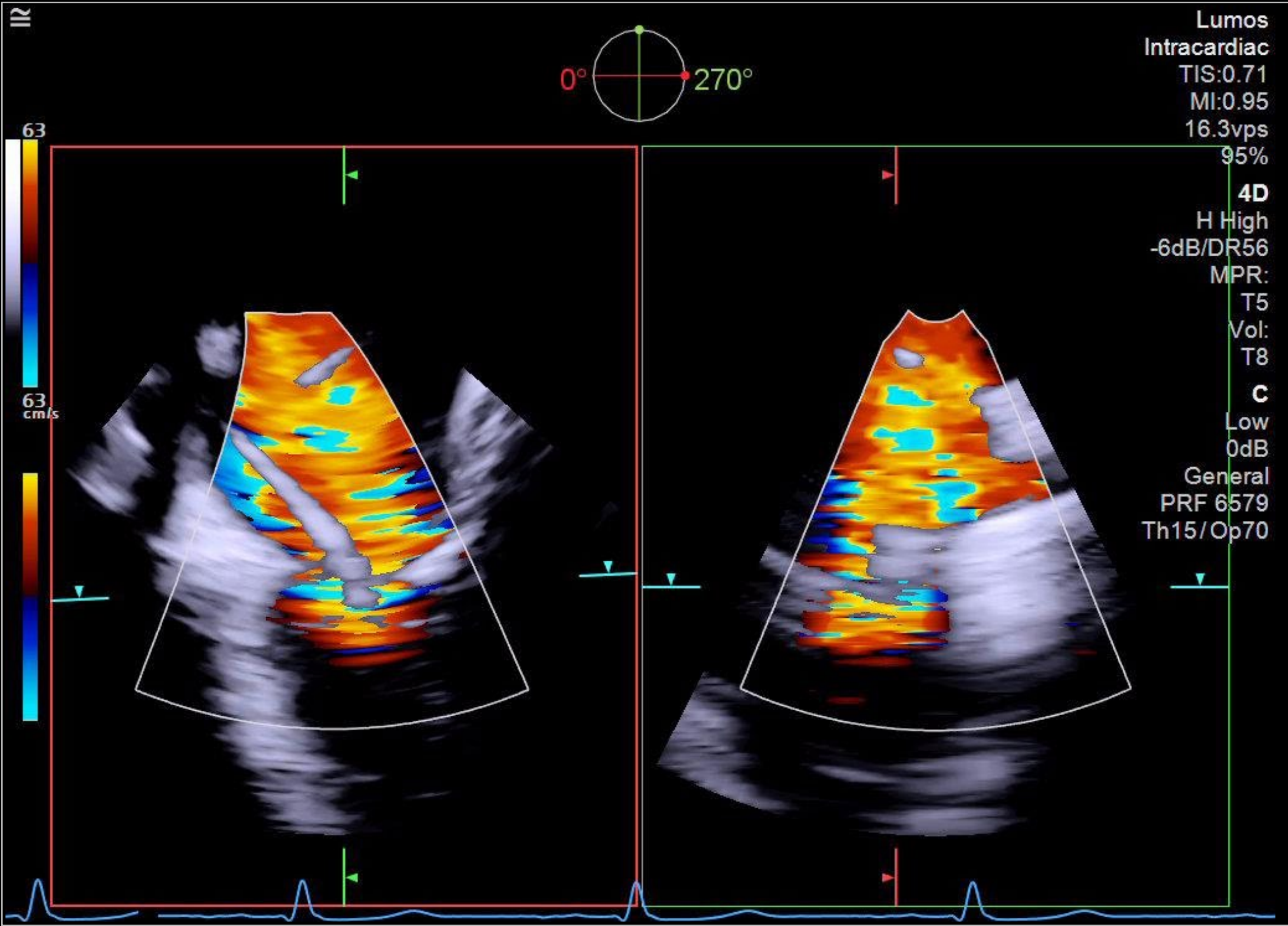
LAA ostium 3D calipers

Advanced 3D landmark tools



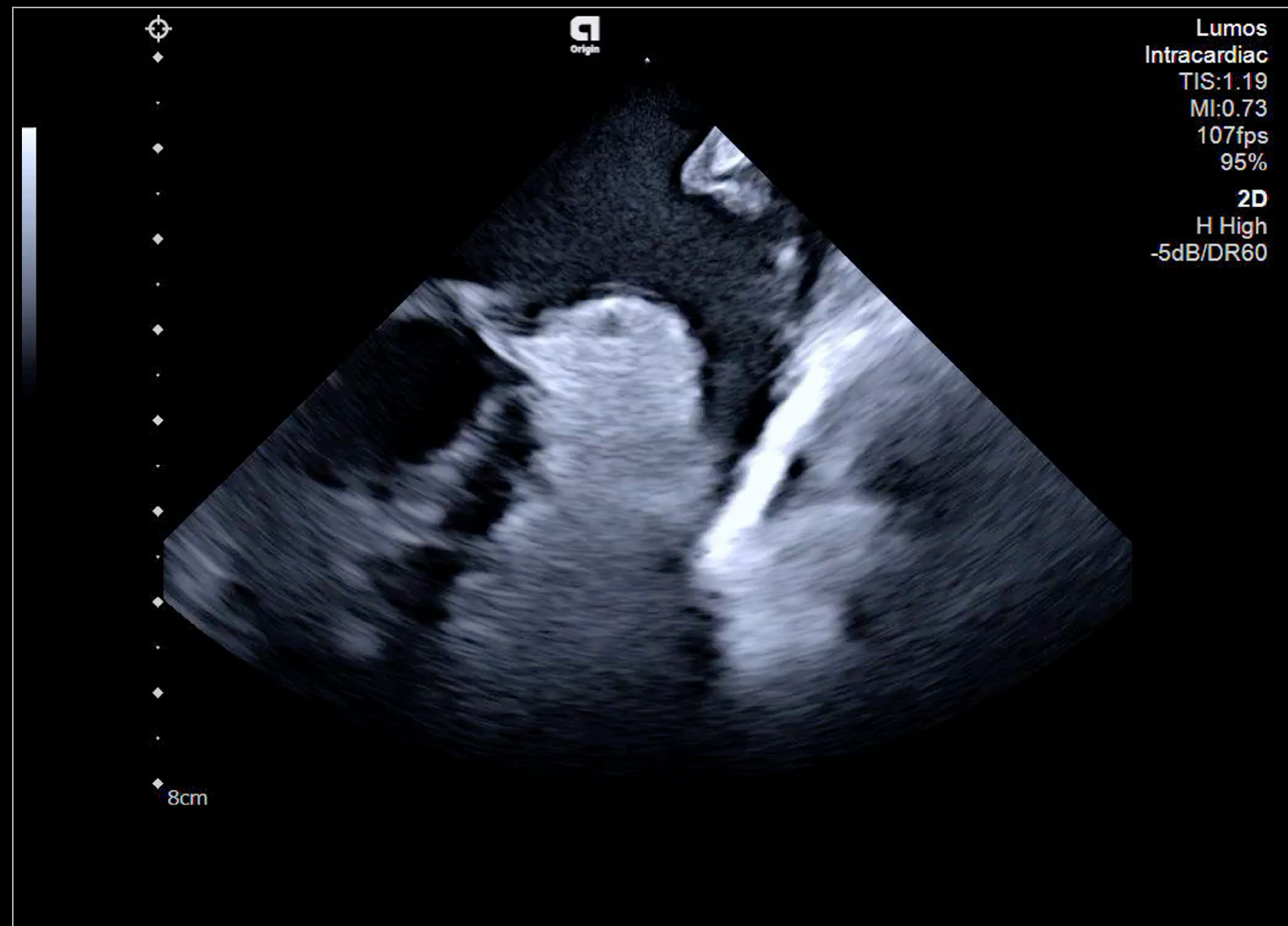
Tricuspid intervention with 3D calipers

MPR biplane for accurate device placement



Tricuspid regurgitation MPR biplane

Exceptional 2D image quality



Left atrial appendage

Clear line of sight for procedure guidance



PFA tissue contact

Raising the standard of procedural excellence

When you see more, you can do more. Illuminate what's possible in intracardiac imaging.



Light the way

with AcuNav Lumos

The products/features mentioned in this document may not be commercially available in all countries. Due to regulatory reasons their future availability cannot be guaranteed. Please contact your local Siemens organization for further details.

Stand-alone clinical images may have been cropped to better visualize pathology.

All trademarks are property of their respective owners.

¹ <https://www.grandviewresearch.com/industry-analysis/structural-heart-devices-market>
² <https://www.jnjmedtech.com/en-US/growing-epidemic-atrial-fibrillation-afib-across-globe>
³ Model for 4D ICEv3; 2020-03-19 AcuNav Volume Report
⁴ Dudek D, Barbato E, Baumbach A, Windecker S, Haude M. Current trends in structural heart interventions: an overview of the EAPCI registries. EuroIntervention. 2017 May 15;13(Z):Z11-Z13.
⁵ Little S. Structural Heart Interventions. Methodist Debakey Cardiovasc J. 2017 Jul-Sep;13(3):96–7.
⁶ CDC AF Fact Sheet
⁷ Bhatia N, Basra SS, Skolnick AH, Wenger NK. Aortic valve disease in the older adult. J Geriatr Cardiol. 2016 Dec;13(12):941-44.

At Siemens Healthineers, we pioneer breakthroughs in healthcare. For everyone. Everywhere. Sustainably. As a leader in medical technology, we want to advance a world in which breakthroughs in healthcare create new possibilities with a minimal impact on our planet.

By consistently bringing innovations to the market, we enable healthcare professionals to innovate personalized care, achieve operational excellence, and transform the system of care.

Our portfolio, spanning in vitro and in vivo diagnostics to image-guided therapy and cancer care, is crucial for clinical decision-making and treatment pathways. With the unique combination of our strengths in patient twinning², precision therapy, as well as digital, data, and artificial intelligence (AI), we are well positioned to take on the greatest challenges in healthcare. We will continue to build on these strengths to help overcome the world’s most threatening diseases, enable efficient operations, and expand access to care.

We are a team of 73,000 Healthineers in over 70 countries passionately pushing the boundaries of what is possible in healthcare to help improve the lives of people around the world.

Siemens Healthineers Headquarters

Siemens Healthineers AG
Siemensstr. 3
91301 Forchheim, Germany
Phone: +49 9191 18-0
siemens-healthineers.com

Manufacturer

Siemens Medical Solutions USA, Inc.
Ultrasound
22010 S.E. 51st Street
Issaquah, WA 98029, USA
Phone: 1-888-826-9702
siemens-healthineers.com/ultrasound