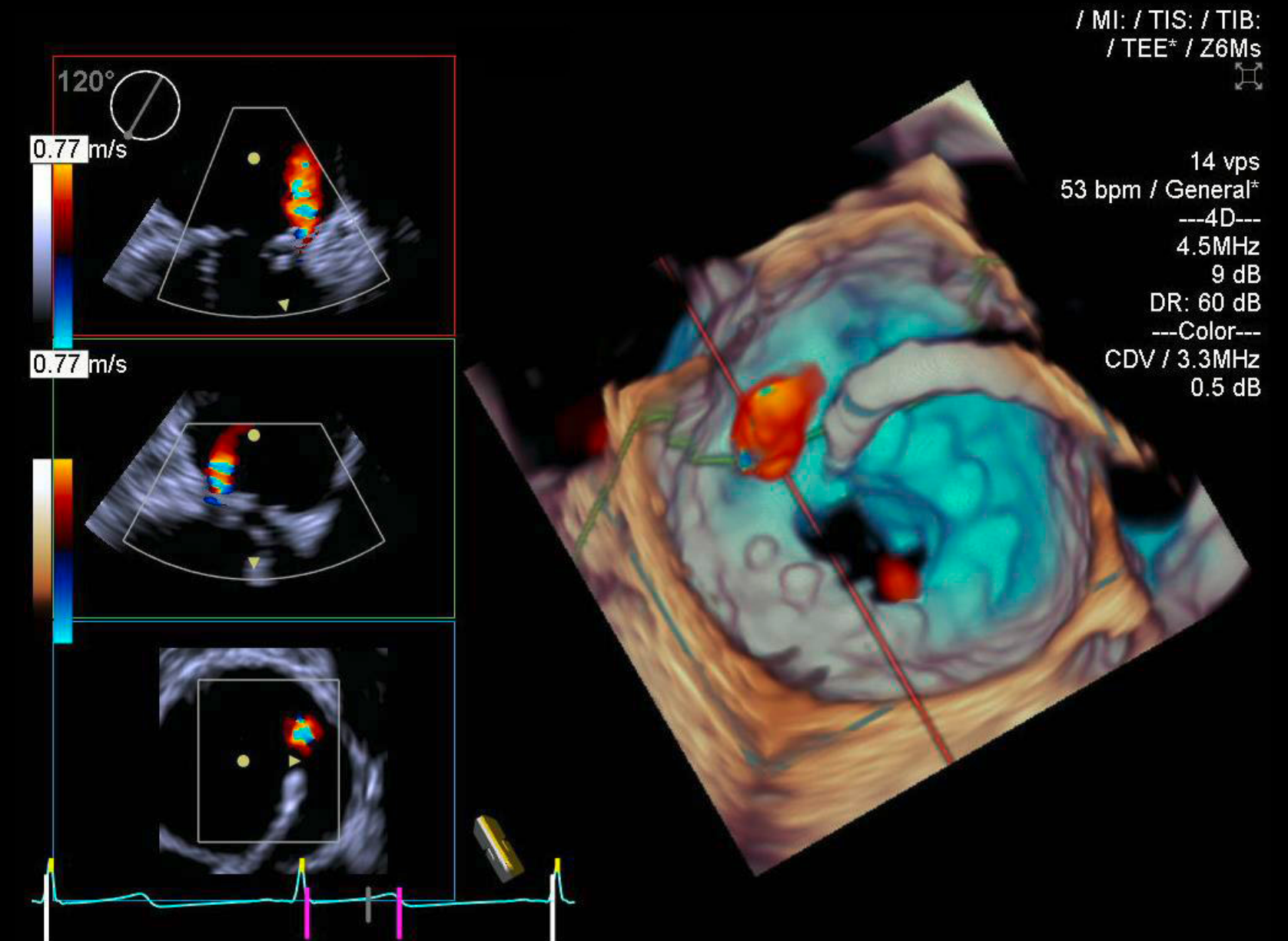
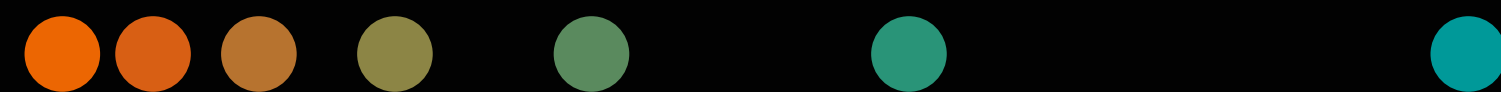


ACUSON SC2000 PRIME ultrasound system

The complete structural heart disease solution

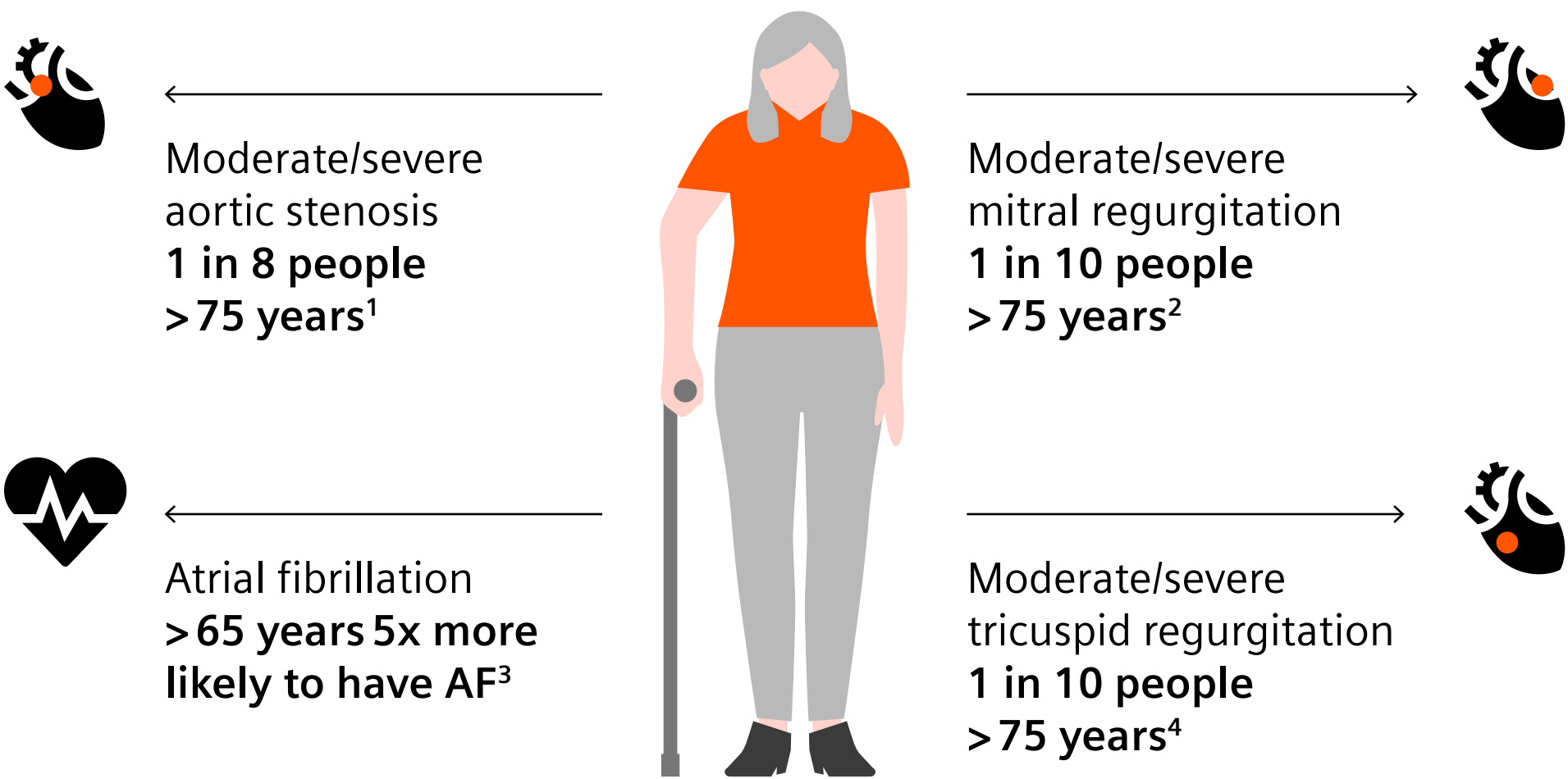
Release 6.5

siemens-healthineers.com/acuson-sc2000-ultrasound-system

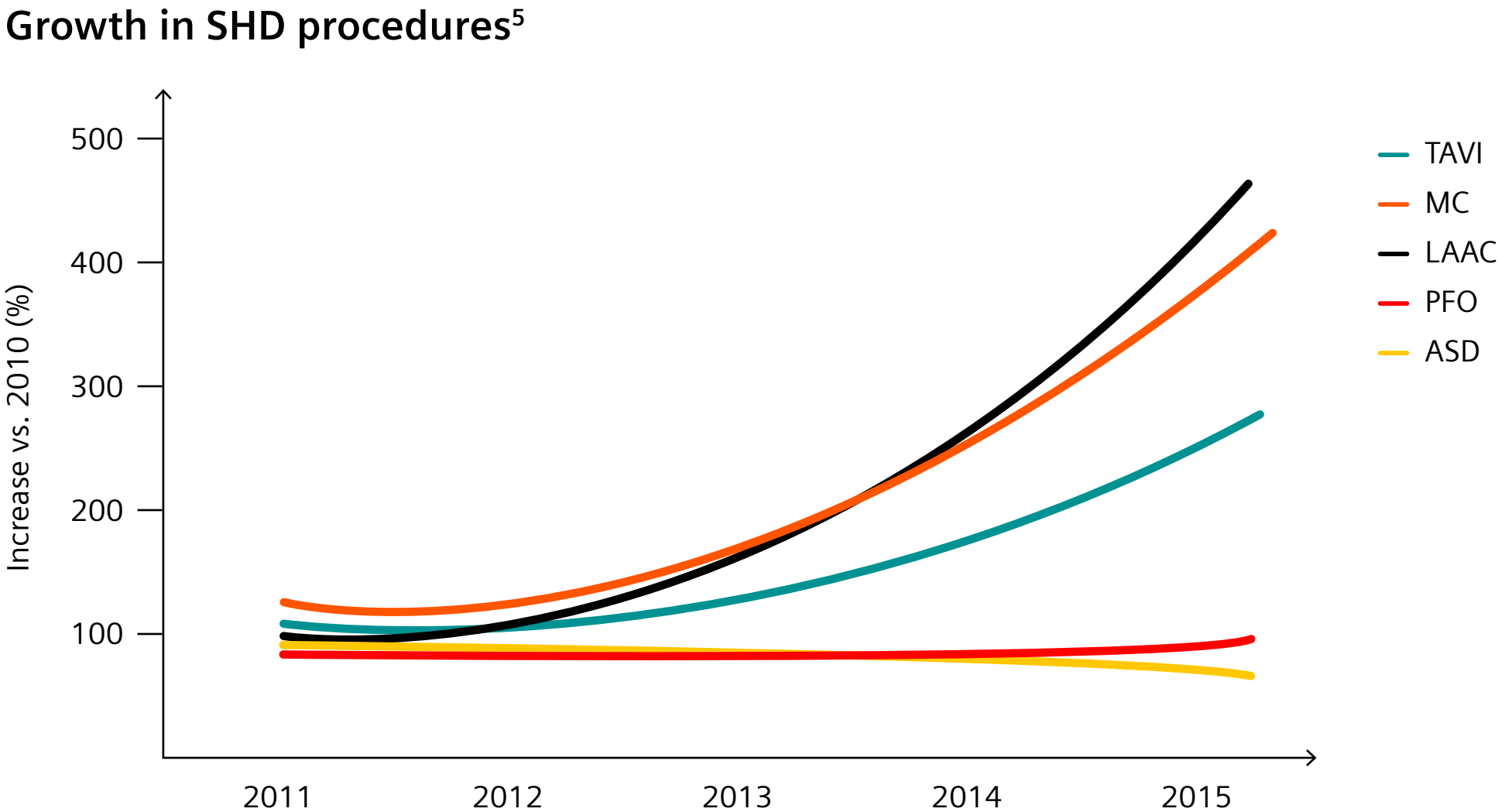


What if ...?

What if you had all the tools required to handle your SHD patients?



What if you could increase both speed and precision for your procedures?



**The complete structural heart solution:
ACUSON SC2000 PRIME offers
2D and 4D TTE, TEE, ICE, and TrueFusion¹**

High-resolution visualization ensures you never miss
what your ultrasound should have shown you



Transforming care delivery in structural heart disease procedures

The ACUSON SC2000 PRIME ultrasound system

ACUSON SC2000 PRIME is an ultrasound system that provides you **workflow efficiency** and **precision** required at every step of the care pathway. You get the complete Structural Heart Disease solution with the full suite of imaging options and one-click AI-powered applications – enabling you to handle your echocardiography challenges.



Power of the platform

Pioneering 2D and 4D imaging technologies for more clinically relevant detail in every image.



The complete structural heart disease solution

2D and 4D TTE, TEE, ICE, and TrueFusion.



Precision and speed for the echo lab

Comprehensive suite of AI-powered applications.



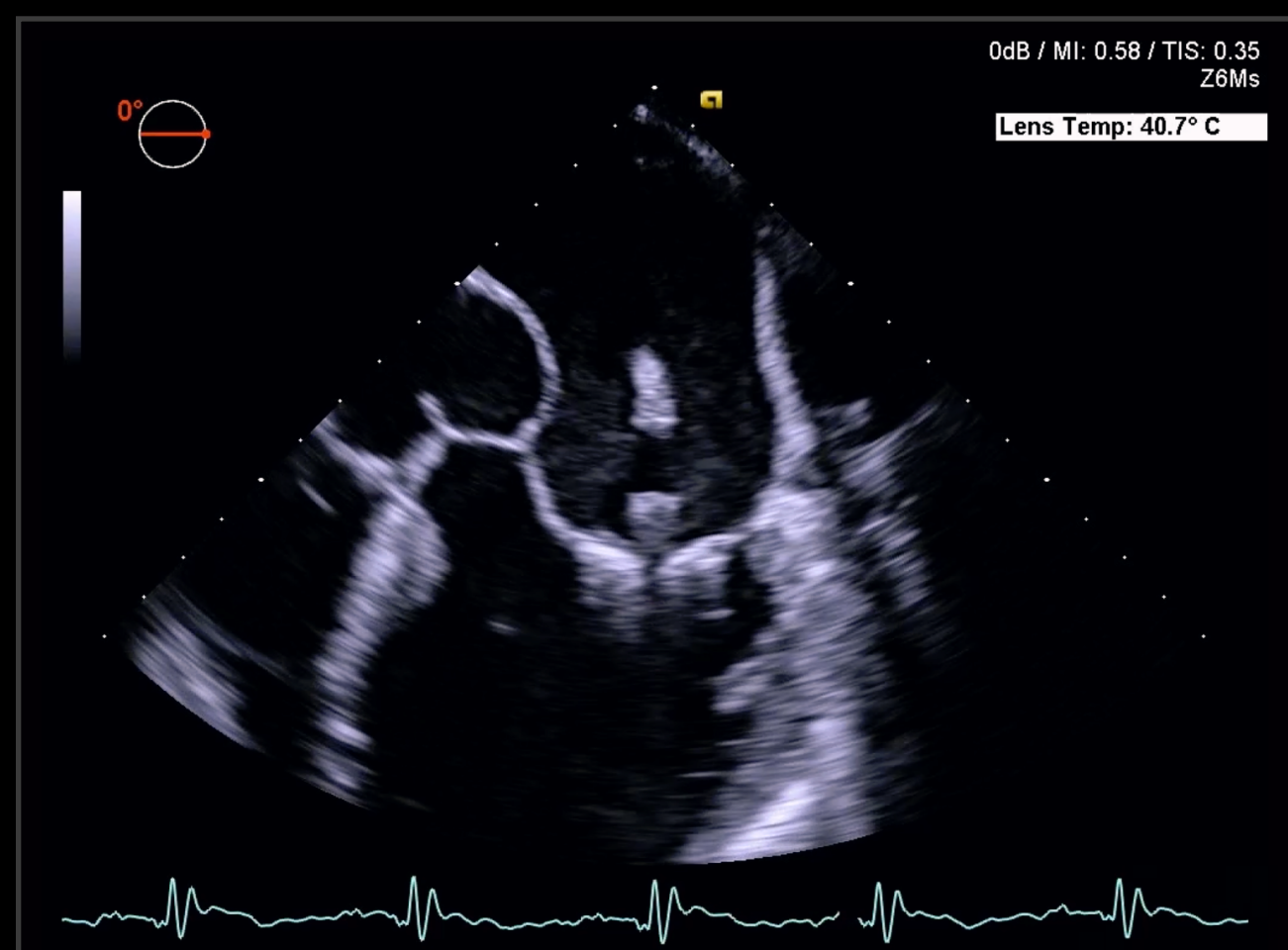
More relevant than ever before

Continuous improvements in image quality, IT and security, processing power, and ergonomics.

Pioneering 2D and 4D imaging technologies

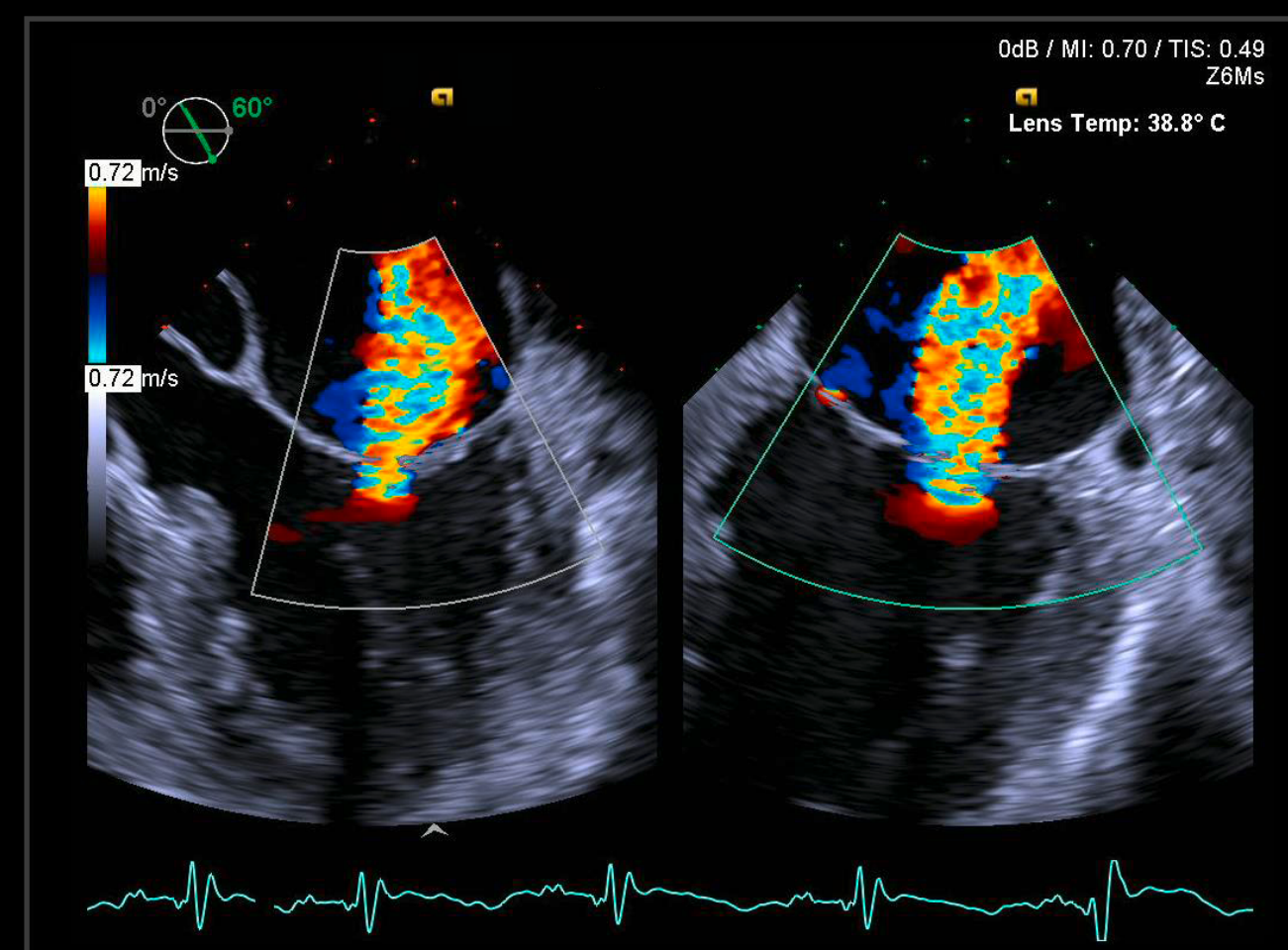
for more clinically relevant detail in every image

InFocus Coherent Technology



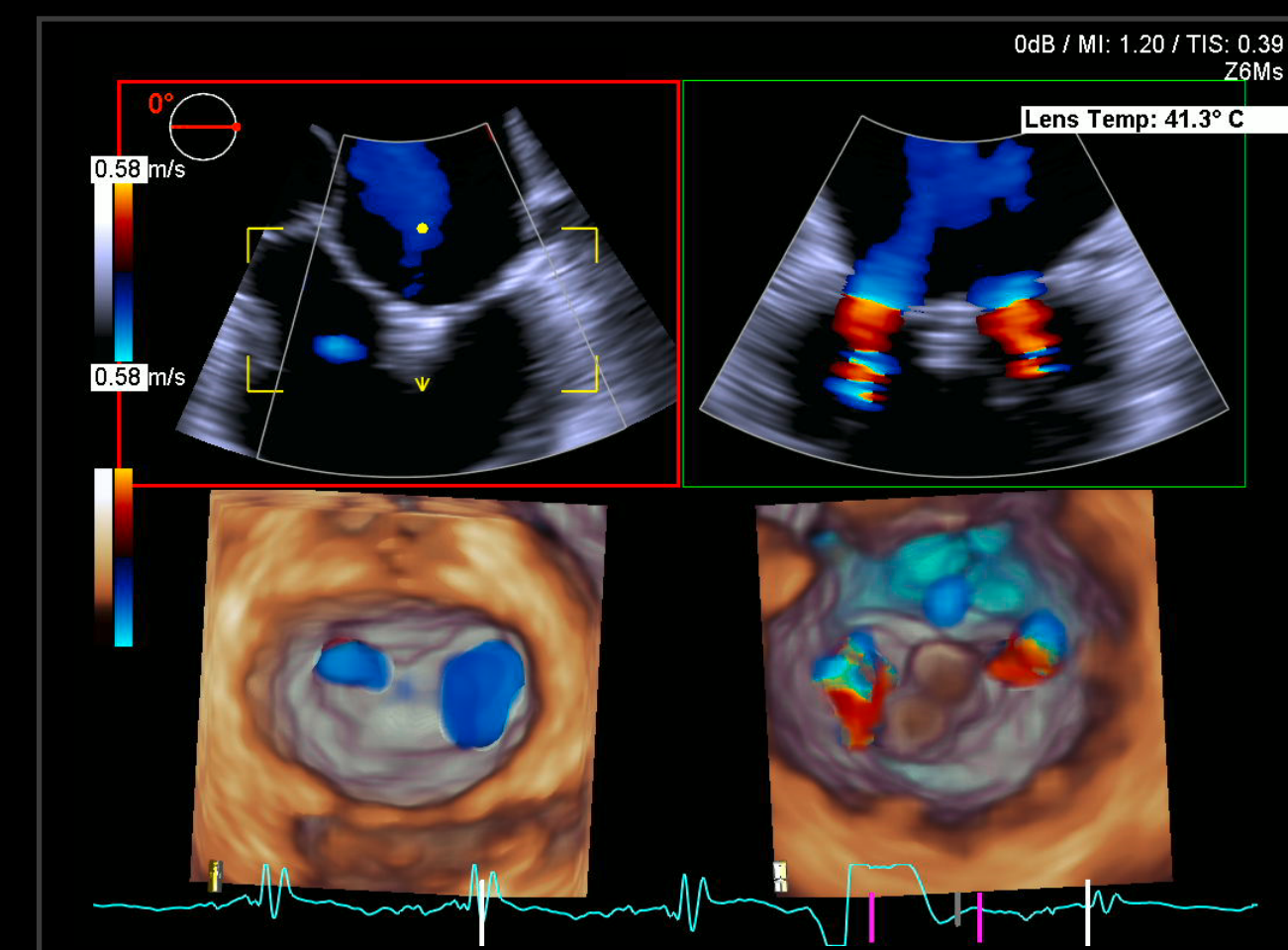
InFocus Coherent Technology synthesizes every pixel throughout the field of view for excellent spatial and temporal resolution.

True Fidelity Color Doppler



True Fidelity Color Doppler provides sensitivity and specificity while reducing color artifacts.

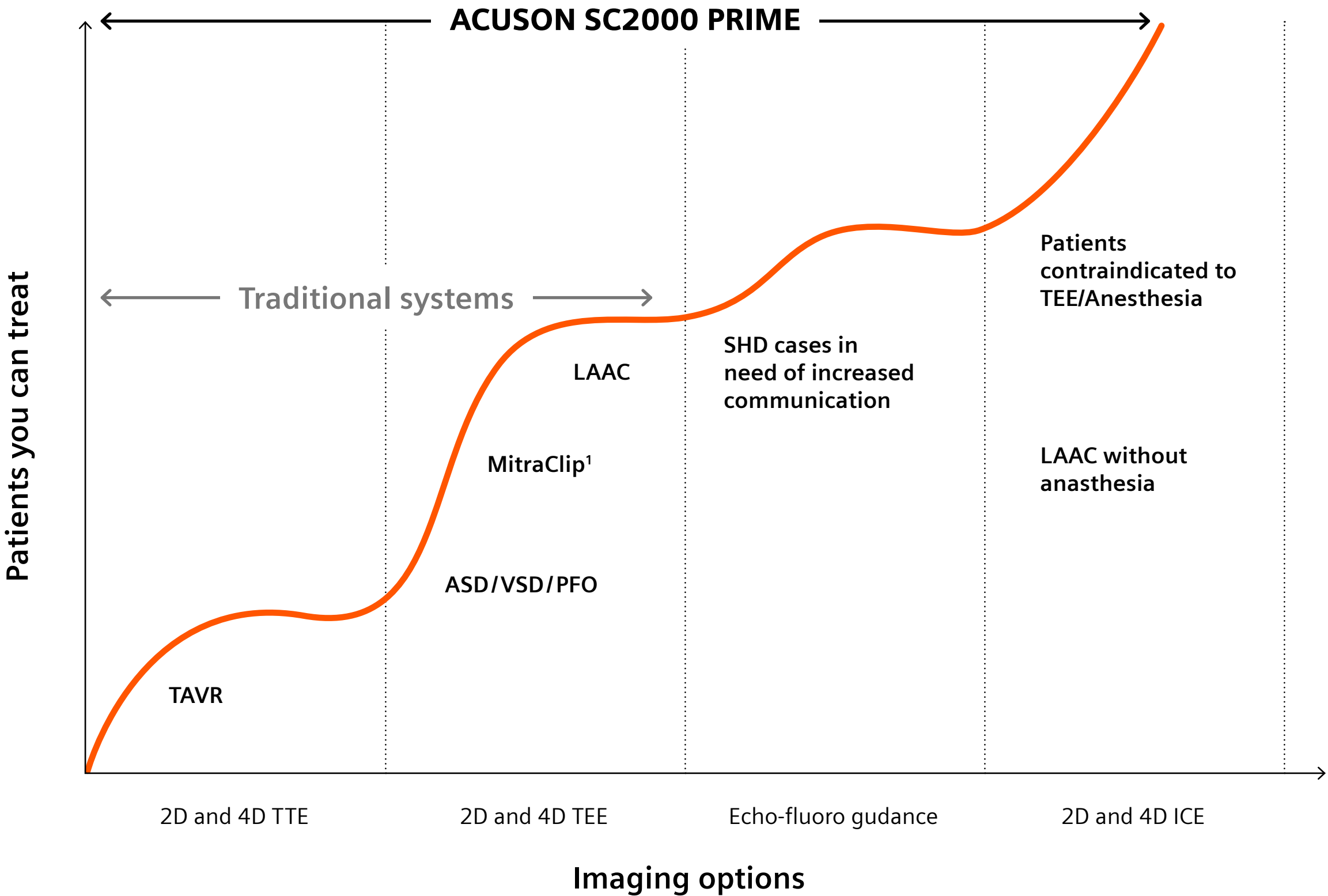
Real-Time Volume Color Doppler



Real-time 4D volume imaging and volume color Doppler is as easy and real-time as your 2D imaging. This enables you to move from static anatomic pictures to see anatomy in motion – true physiology.

Enabling you to confidently handle your patient care in SHD

Population over the age of 65 is expanding, causing an increase in the number and variety of patients at risk of arrhythmia and valvular heart disease. Be prepared to confidently handle your patient care in structural heart disease with the full suite of imaging options available on the ACUSON SC2000 PRIME.



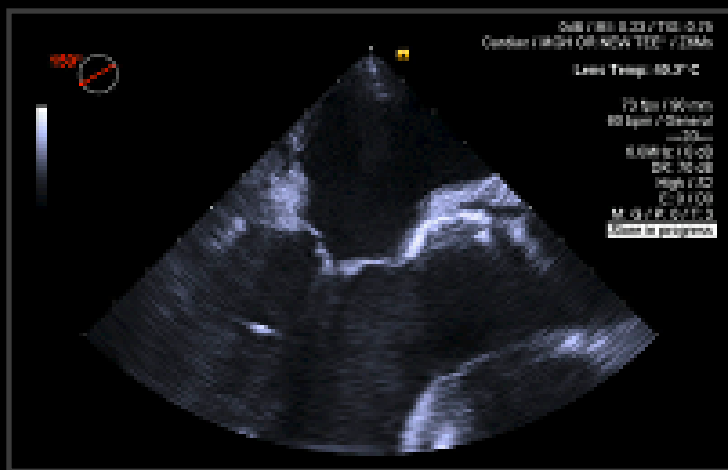
2D and 4D TTE, TEE, ICE, and TrueFusion

only with the ACUSON SC2000 PRIME ultrasound system

2D TTE



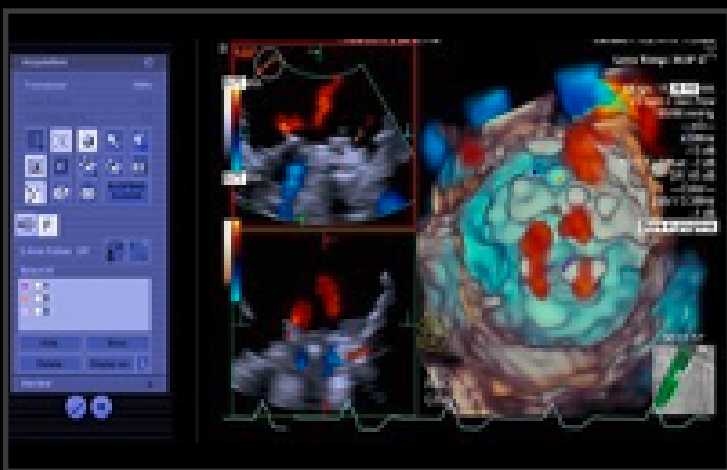
2D TEE



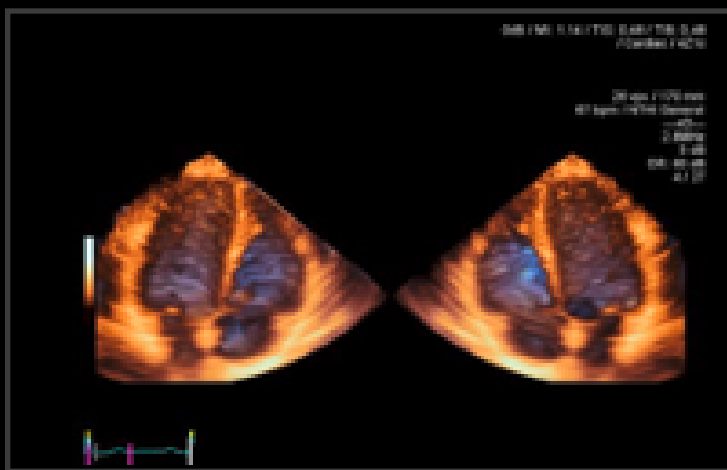
2D ICE



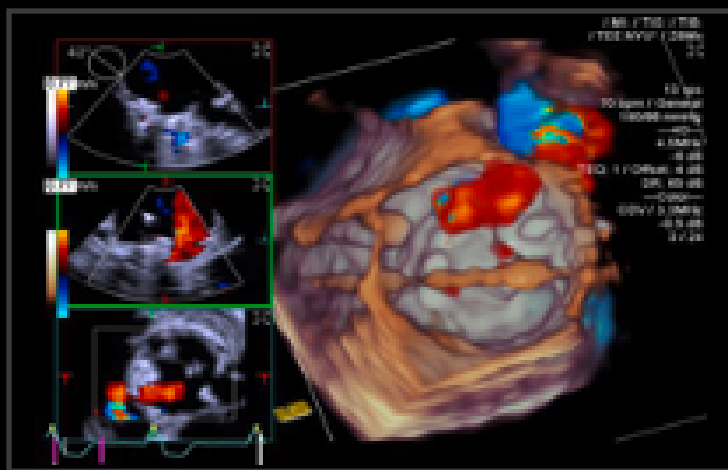
TrueFusion



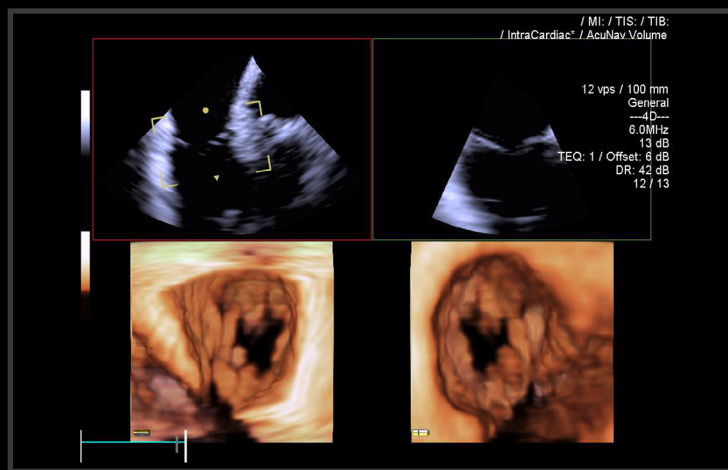
4D TTE



4D TEE



4D ICE



Echo-fluoro guidance

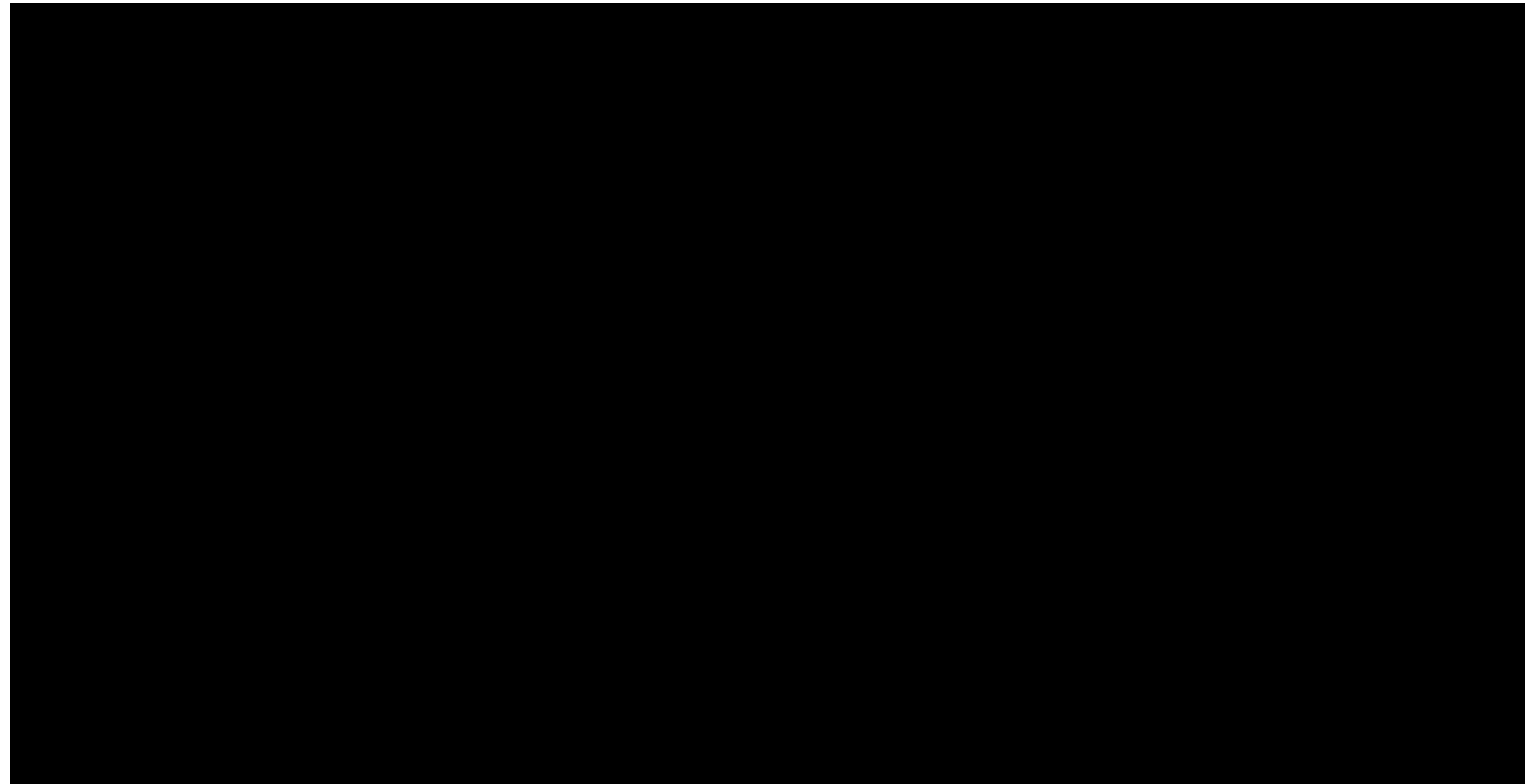


One of the leaders in artificial intelligence and imaging

Bringing you speed and precision in echocardiography

Siemens Healthineers has pioneered AI-powered offerings since 1996. As of today, we have over 1,100 patent families and applications related to machine learning (with 550 in deep learning), and more than 80 AI-enriched offerings on the market.

Today, the ACUSON SC2000 PRIME ultrasound system offers a comprehensive suite of AI-powered applications on the market.



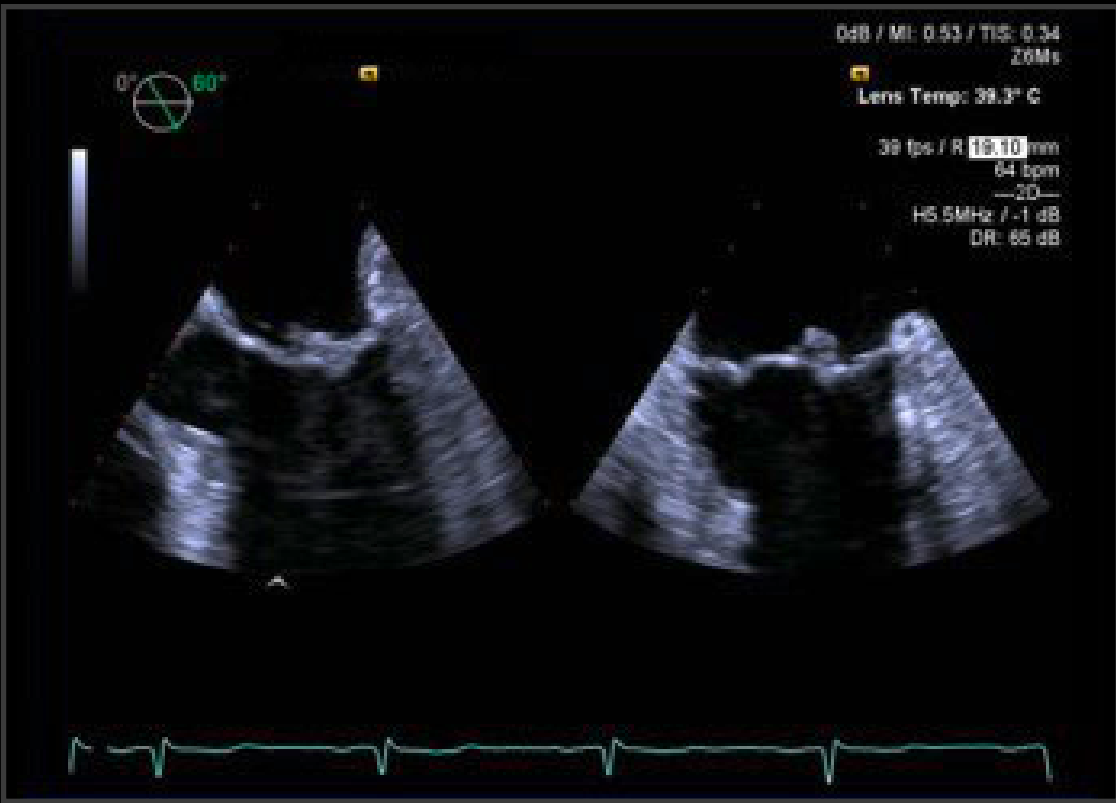
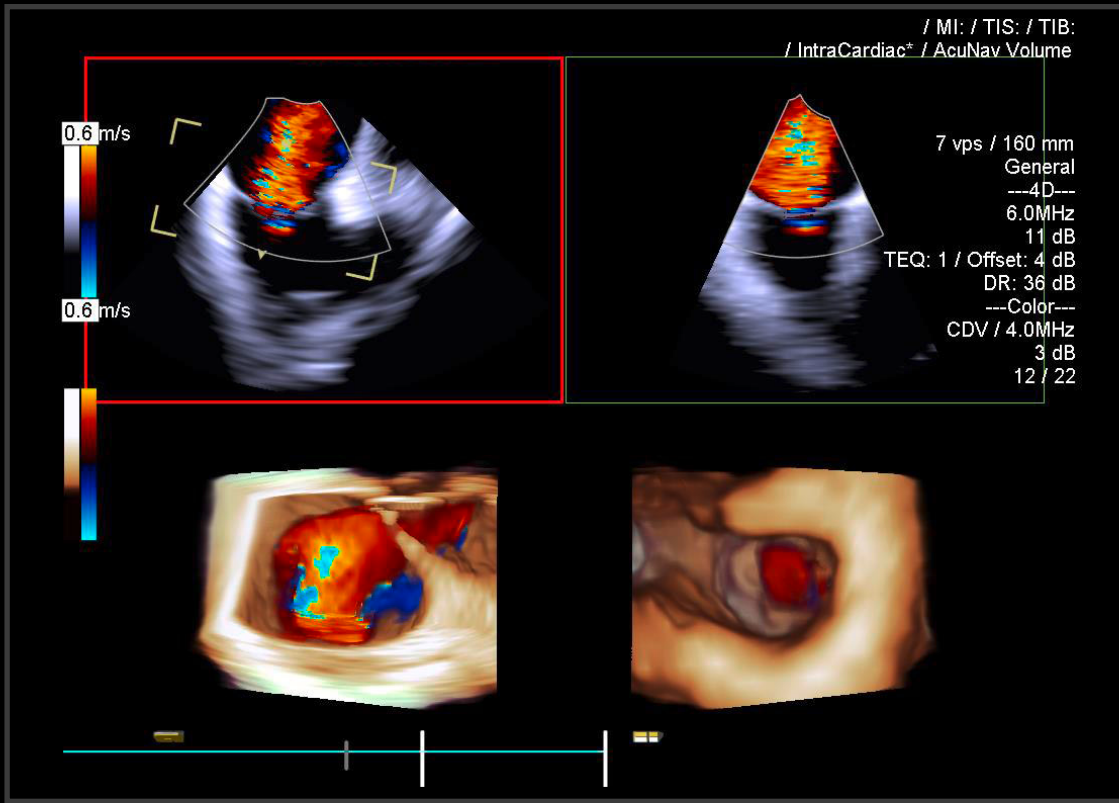
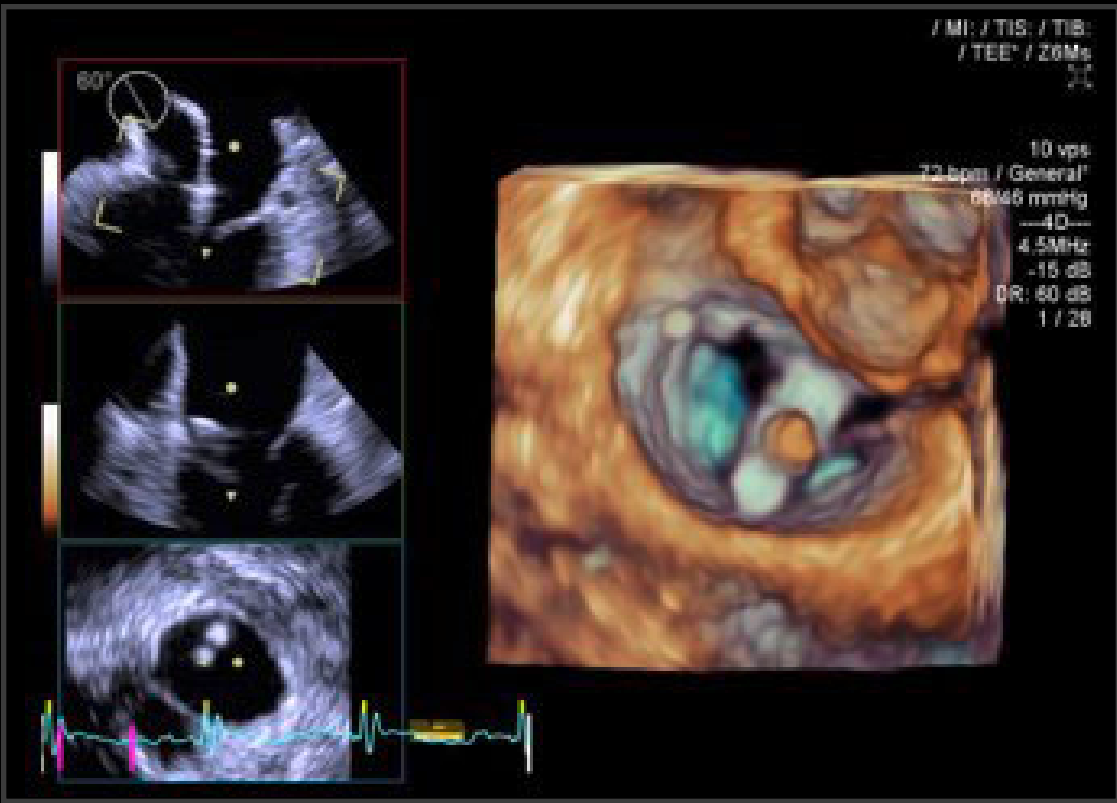
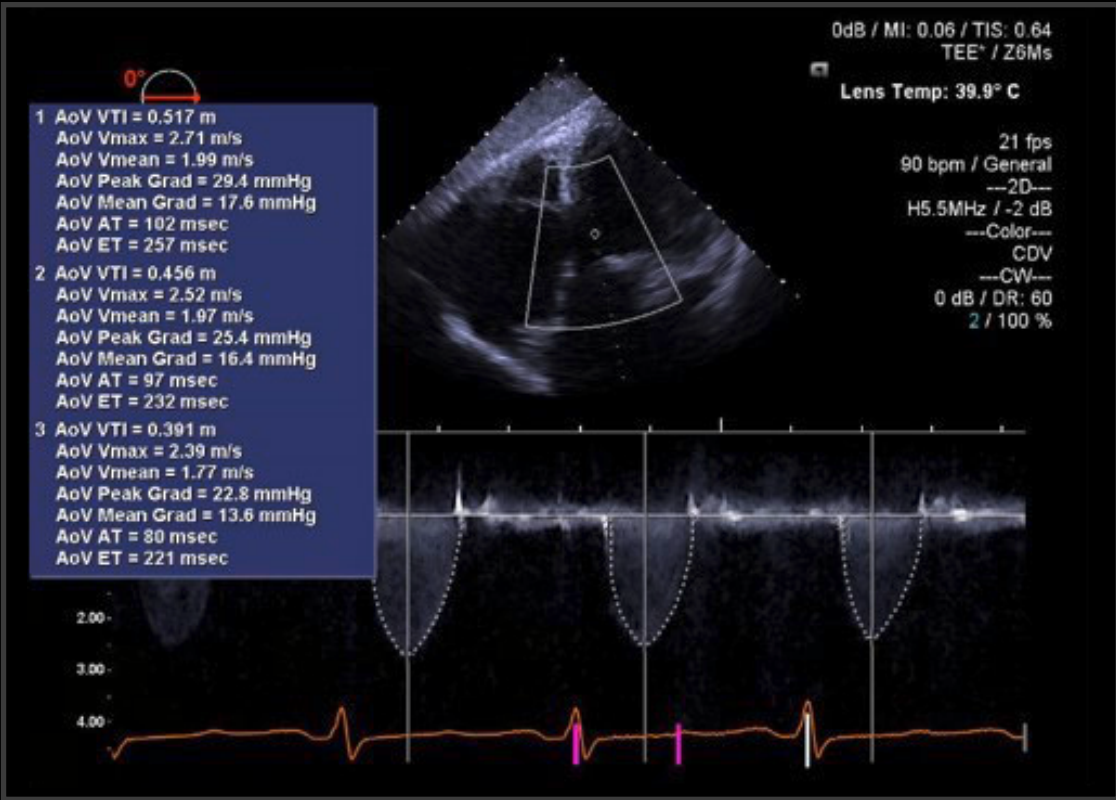
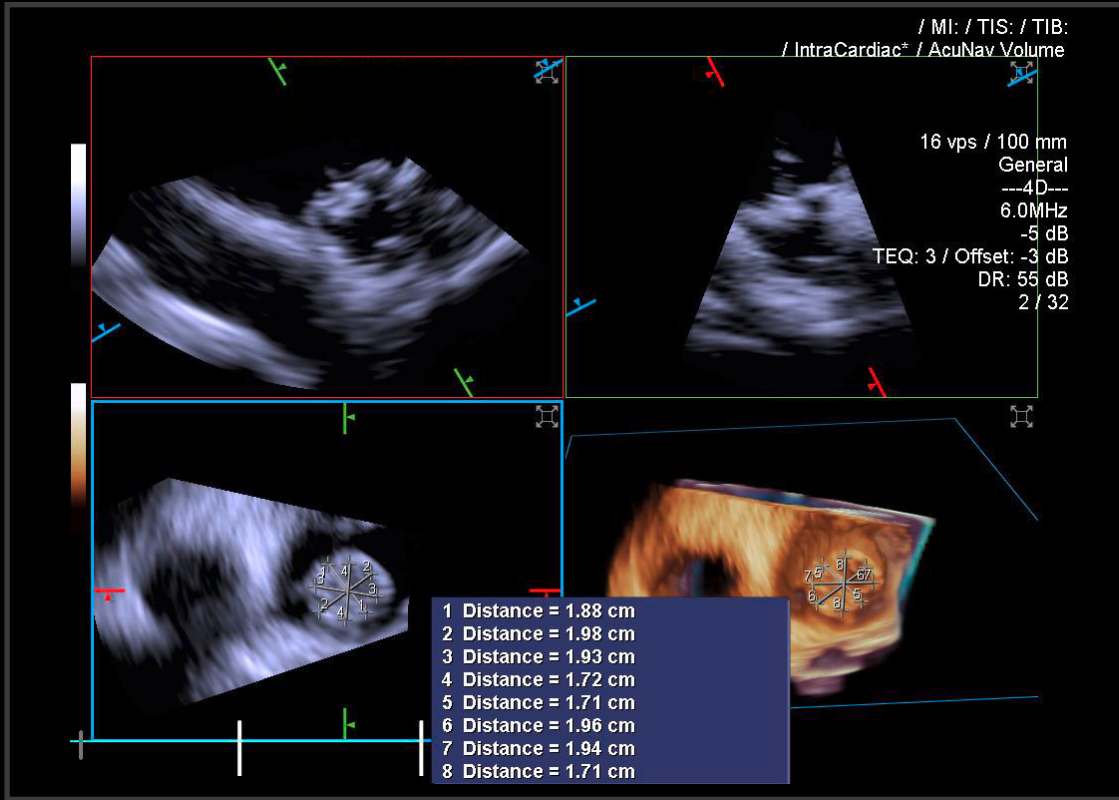
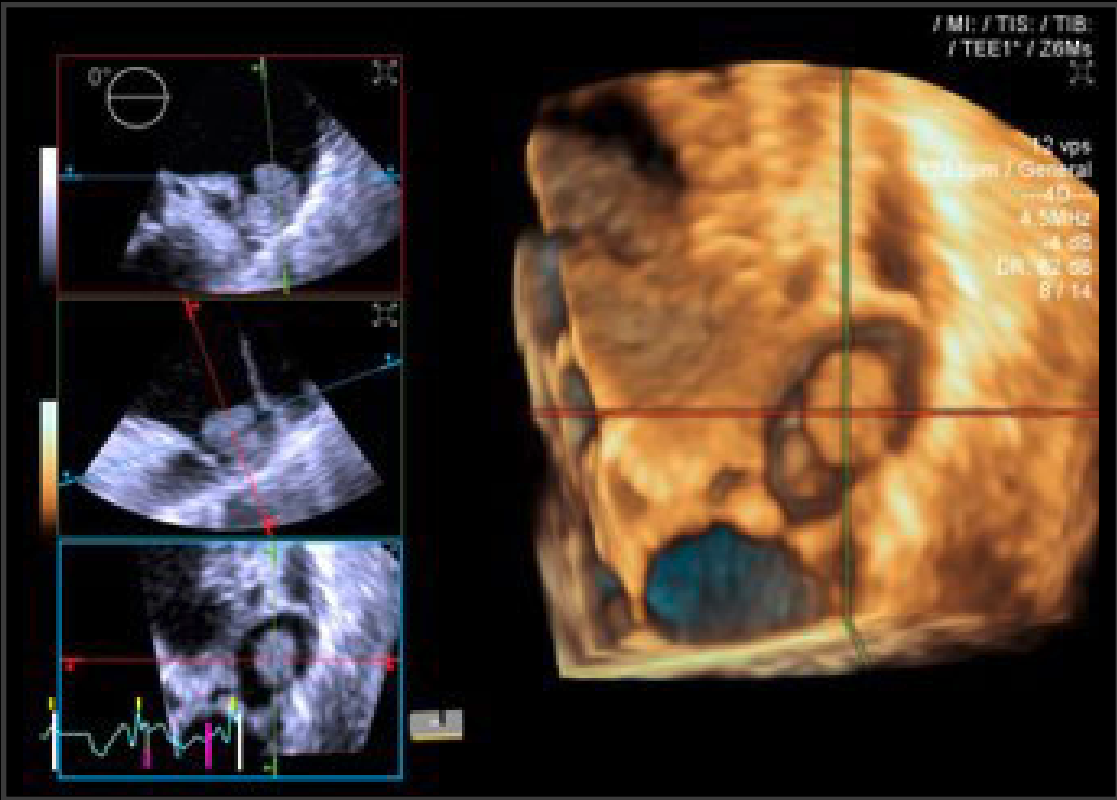
AI-powered clinical applications

Comprehensive overview

	Clinical application	Transthoracic (TTE)	Transesophageal (TEE)
Routine echo	eSie Measure workflow acceleration B-mode	✓	
	eSie Measure workflow acceleration M-mode	✓	
	eSie Measure workflow acceleration Spectral Doppler	✓	✓
	eSie Left Heart measurement package	✓	
	eSie LVA volume LV analysis	✓	✓
Valvular regurgitation	eSie PISA volume analysis	✓	✓
	eSie Valves advanced analysis package		✓
	eSie LVA volume LV analysis	✓	✓
Interventional guidance	TrueFusion		✓
	eSie Measure workflow acceleration Spectral Doppler	✓	✓
	eSie LVA volume LV analysis	✓	✓
	eSie Valves advanced analysis package		✓
	eSie PISA volume analysis	✓	✓

Interventional imaging tools

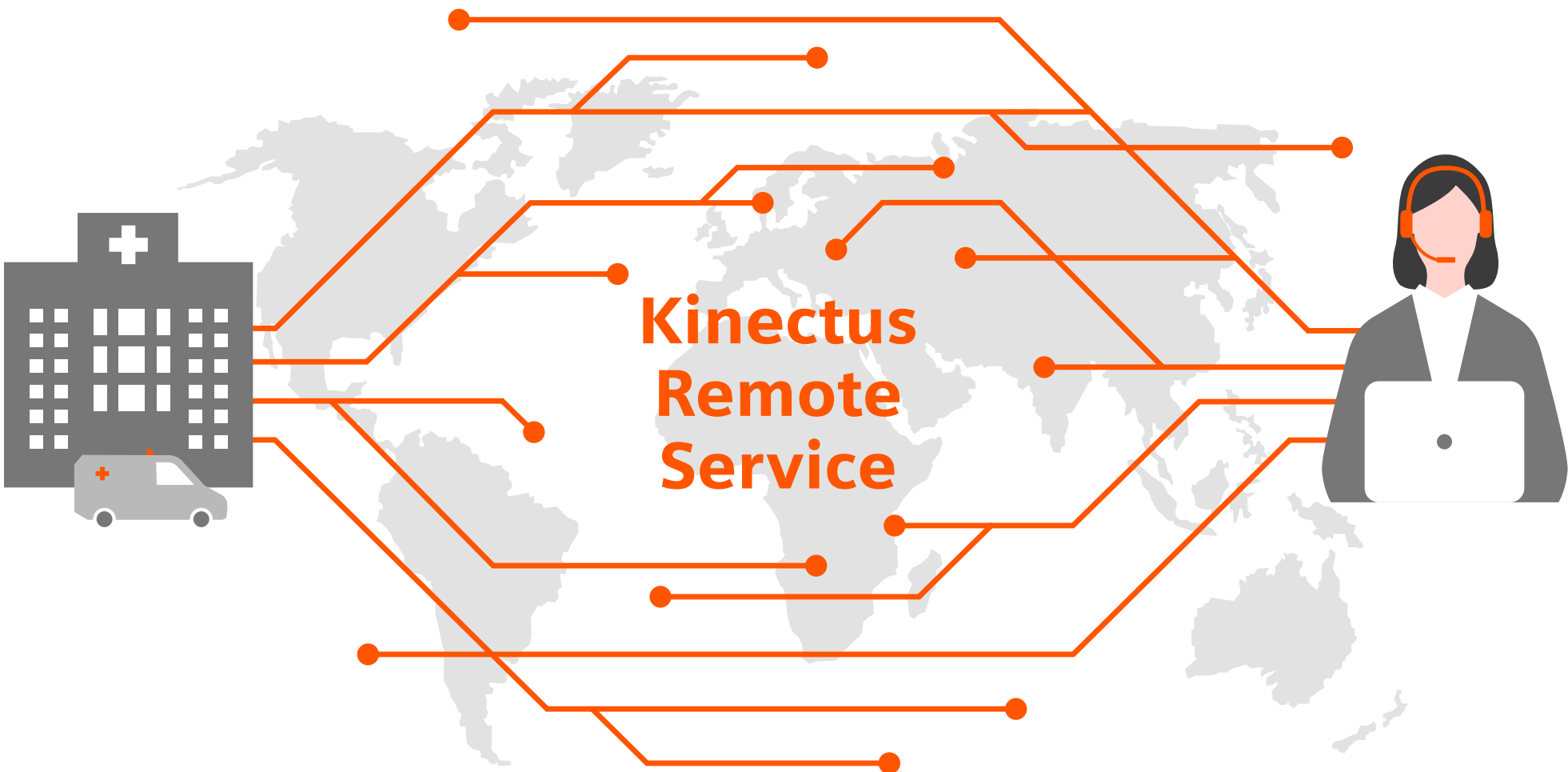
Available at the click of the button



Maximize system uptime with remote connected support

More relevant than ever before in the digital world

Kinectus Remote Service connects your medical equipment to our experts who provide you with proactive and interactive services caring for your running operations.



Remote diagnosis and repair

Immediate access to technical support
reducing labor costs by **> 50%¹**

Remote assist

Real-time interaction with clinical application experts resulting in **faster incident resolution by > 80%¹**

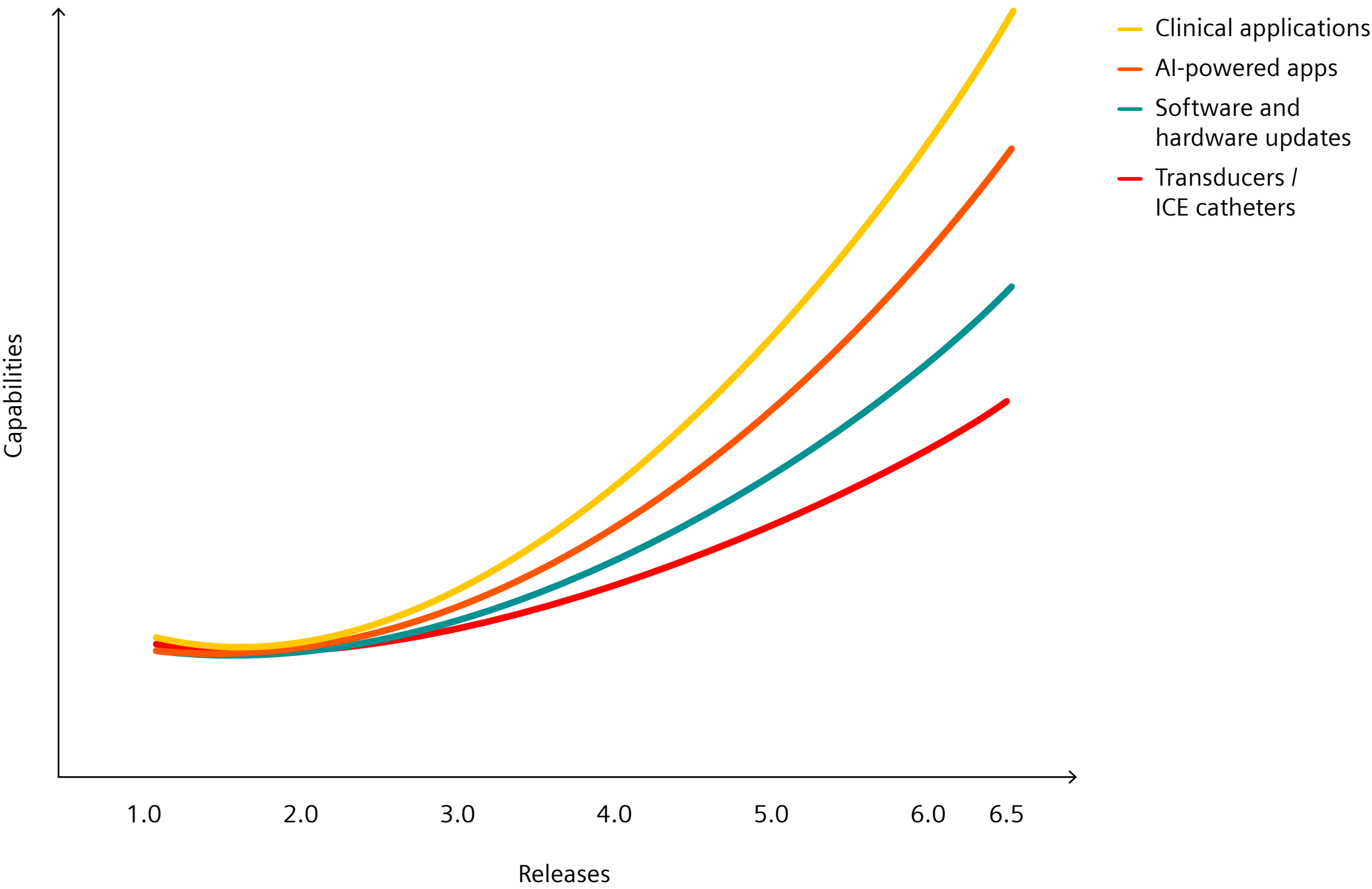
Remote software updates

Remote installation of the latest software updates to help protect against cyber threats

More relevant today than ever before

The ACUSON SC2000 PRIME ultrasound system today is completely different from just a few years ago

With ongoing investments in processing power and AI-powered applications as well as IT and security, the ACUSON SC2000 PRIME ultrasound system continues to revolutionize the world of echocardiography, transforming care delivery in Structural Heart Disease procedures.



The products/features mentioned in this document may not be commercially available in all countries. Due to regulatory reasons their future availability cannot be guaranteed. Please contact your local Siemens Healthineers organization for further details. Standalone clinical images may have been cropped to better visualize pathology.

All trademarks are the property of their respective owners.

TrueFusion represents a workflow consisting of the software applications *syngo*® TrueFusion and TrueFusion echo-fluoro guidance.

AI-powered measurement tools consist of software applications leveraging machine learning-based Artificial Intelligence to achieve the intended outcome and include the eSie Measure workflow acceleration package, eSie Left Heart measurement package, eSie LVA volume LV analysis, eSie Valves advanced analysis package, eSie PISA and eSie Sync volume synchroni-zation tool for TrueFusion.

At Siemens Healthineers, we pioneer breakthroughs in healthcare. For everyone. Everywhere. Sustainably. As a leader in medical technology, we want to advance a world in which breakthroughs in healthcare create new possibilities with a minimal impact on our planet. By consistently bringing innovations to the market, we enable healthcare professionals to innovate personalized care, achieve operational excellence, and transform the system of care.

Our portfolio, spanning in vitro and in vivo diagnostics to image-guided therapy and cancer care, is crucial for clinical decision-making and treatment pathways. With the unique combination of our strengths in patient twinning¹, precision therapy, as well as digital, data, and artificial intelligence (AI), we are well positioned to take on the greatest challenges in healthcare. We will continue to build on these strengths to help overcome the world’s most threatening diseases, enable efficient operations, and expand access to care.

We are a team of 73,000 Healthineers in over 70 countries passionately pushing the boundaries of what is possible in healthcare to help improve the lives of people around the world.

¹ *Personalization of diagnosis, therapy selection and monitoring, aftercare, and managing health.*

Siemens Healthineers Headquarters
Siemens Healthineers AG
Siemensstr. 3
91301 Forchheim, Germany
Phone: +49 9191 18-0
siemens-healthineers.com

Manufacturer
Siemens Medical Solutions USA, Inc.
Ultrasound
22010 S.E. 51st Street
Issaquah, WA 98029, USA
Phone: 1-888-826-9702
siemens-healthineers.com/ultrasound